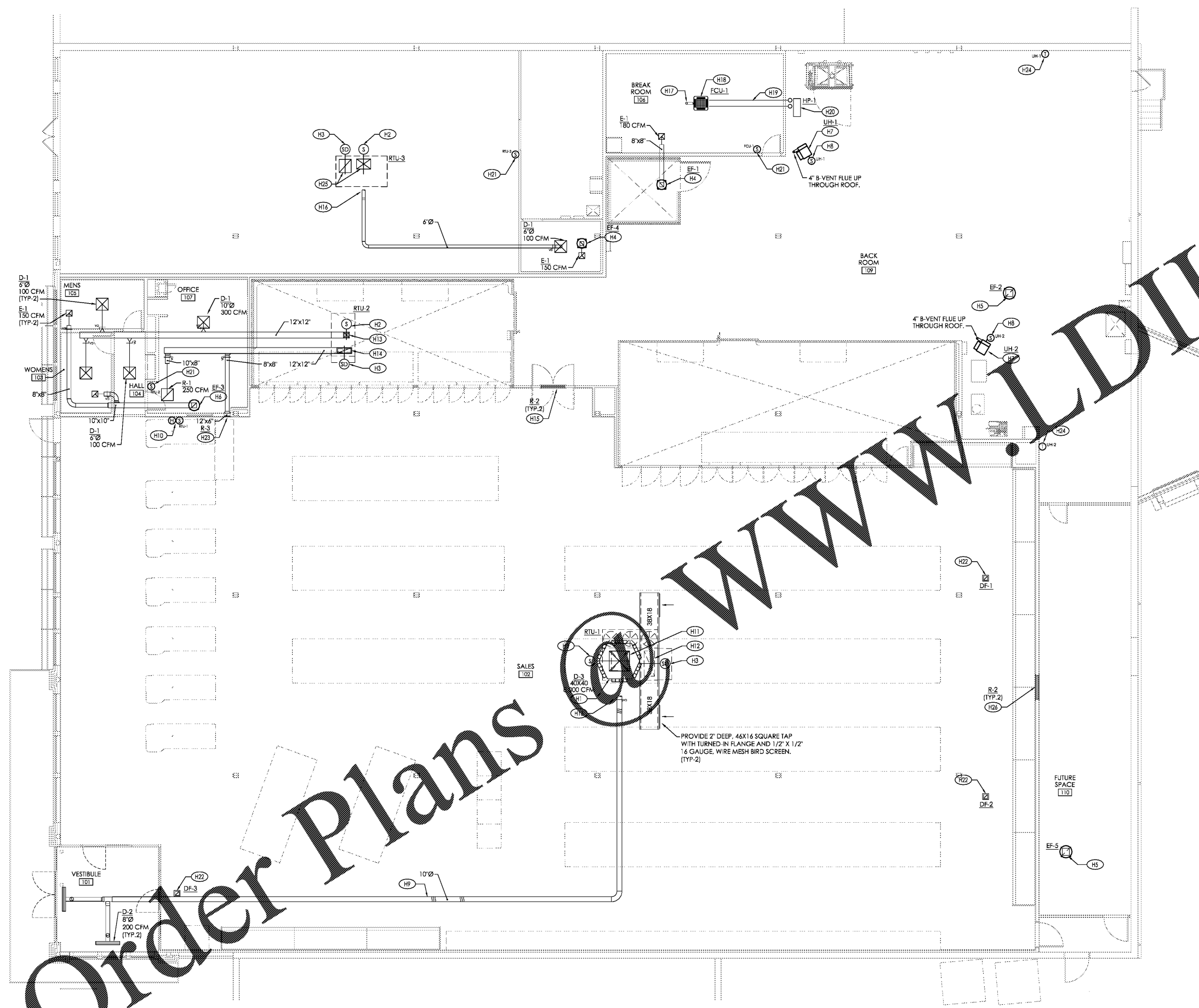


Plot Date: 3/7/2019



GENERAL HVAC NOTES:

- 1. COORDINATE DIFFUSER LOCATIONS WITH REFLECTED CEILING PLAN INCLUDING LIGHTS AND SPRINKLER HEAD LAYOUTS.
2. PROVIDE DUCT MOUNTED SMOKE DETECTORS IN SUPPLY AND RETURN AIR DUCTS AS INDICATED ON THE FLOOR PLAN.
3. COORDINATE 6-WAY SUPPLY DIFFUSER MOUNTING HEIGHT AND LOCATION WITH STRUCTURAL STEEL AND LIGHTS.
4. TEMPERATURE AND HUMIDITY SENSORS ARE SHOWN FOR REFERENCE ONLY.
5. ALL DUCT DIMENSIONS REPRESENT FREE AREA.
6. ALL MITERED ELBOWS & TEES SHALL BE PROVIDED WITH TURNING VANES.
7. ALL ROUND DUCTWORK SHALL BE SPIRAL ONLY.
8. PROVIDE VOLUME DAMPERS AT ALL RETURN REGISTER TAKEOFFS.
9. MAXIMUM EXHAUST DUCT LENGTH SHALL BE 4FT.
10. VERIFY ALL NEW EQUIPMENT AND SCOPE OF WORK PRIOR TO BIDDING.
11. PROVIDE 1 1/2" PVC CONDENSATE DRAIN & P-TRAP FOR ALL ROOFTOP UNITS.
12. PROVIDE ACOUSTICAL INSULATION INSIDE ROOFTOP UNIT CURB FOR SOUND ATTENUATION.
13. INSULATE ALL DUCTWORK CONCEALED ABOVE A CEILING AND EXPOSED IN THE BACK ROOM.

HVAC Keyed Notes:

- (H1) MOUNT 6-WAY SUPPLY DIFFUSER TIGHT TO BOTTOM OF ROOF JOIST. SUPPORT FROM ROOF STRUCTURE WITH THREADED ROD. THROW FOR EACH LOUVER TO BE 15° DOWNWARD FROM THE HORIZONTAL POSITION.
(H2) DISCHARGE AIR TEMPERATURE SENSOR. SENSORS, WIRING AND CONDUIT SHALL BE PROVIDED AND INSTALLED BY OTHERS.
(H3) DUCT MOUNTED SMOKE DETECTOR.
(H4) 8X8 EXHAUST UP TO EF-1/EF-4 LOCATED ON ROOF.
(H5) 14X14 EXHAUST UP TO EF-2 LOCATED ON ROOF AND EXTENDED 1'-8" INTO SPACE. PROVIDE 18X18 WELDED DRAIN PAN BELOW DUCT OPENING.
(H6) 10X10 EXHAUST UP TO EF-3 LOCATED ON ROOF.
(H7) MOUNT BOTTOM OF UNIT HEATER AT A MINIMUM OF 10'-6" AFF.
(H8) PENDENT MOUNT TEMPERATURE SENSOR/DIGITAL ZONE CONTROLLER AT REAR OF UNIT HEATER AT 10'-6" AFF.
(H9) RUN 10"Ø DUCT AS HIGH AS POSSIBLE, TIGHT TO BOTTOM OF STRUCTURE. PROVIDE OFFSETS AS REQUIRED.
(H10) TEMPERATURE & HUMIDITY SENSORS MOUNTED ON WALL AT 5'-2" AFF TO BOTTOM OF EACH SENSOR. SENSORS, WIRING AND CONDUIT SHALL BE PROVIDED AND INSTALLED BY OTHERS.
(H11) 40X40 LINED SUPPLY UP TO RTU-1. TRANSITION TO RTU SUPPLY CONNECTION.
(H12) 50X20 LINED RETURN UP TO RTU-1. TRANSITION TO RTU RETURN CONNECTION.
(H13) 12X12 LINED SUPPLY UP TO RTU-2. TRANSITION TO RTU SUPPLY CONNECTION.
(H14) 28X12 LINED RETURN UP TO RTU-2. TRANSITION TO RTU RETURN CONNECTION.
(H15) 48X12 TRANSFER MOUNTED AT 8'-10" AFF. REFER TO ARCHITECTURAL INTERIOR ELEVATIONS FOR MORE INFORMATION.
(H16) CONNECT BRANCH DUCTWORK TO SUPPLY AIR RISER.
(H17) 4"Ø OUTSIDE AIR DUCT UP THROUGH ROOF. TERMINATE 1'-6" ABOVE ROOF WITH GOOSENECK. PROVIDE BACKDRAFT DAMPER IN RISER. INSTALL INLINE VENTILATION FAN IN RISER. SEE DUCTLESS SPLIT FAN COIL SCHEDULE FOR DETAILS.
(H18) CEILING MOUNTED CASSETTE DUCTLESS SPLIT FAN COIL UNIT. SUSPEND FROM ROOF STRUCTURE WITH THREADED ROD.
(H19) 3/8"RS & 1/4"RL INSULATED REFRIGERANT LINE KIT. REFRIGERANT PIPING SHALL BE SIZED PER MANUFACTURER'S RECOMMENDATIONS.
(H20) SUSPEND AIR-COOLED HEAT PUMP BETWEEN ROOF JOISTS WITH THREADED ROD AND UNISTRUT.
(H21) MOUNT TEMPERATURE SENSOR/DIGITAL ZONE CONTROLLER ON WALL AT 5'-0" AFF.
(H22) DESTRATIFICATION FAN SUPPORTED FROM BUILDING STRUCTURE. MOUNT 1'-0" BELOW ROOF DECK. MAKE/MODEL: AIR-ROW F-18. MOUNT A MINIMUM OF 4'-0" FROM FRONT FACE OF MDU CASE. MOUNT IN VERTICAL POSITION.
(H23) 12x6 RETURN GRILLE MOUNTED IN WALL. REFER TO ARCHITECTURAL INTERIOR ELEVATIONS FOR MORE INFORMATION.
(H24) FLAT PLATE TEMPERATURE SENSOR MOUNTED ON WALL/COLUMN AT 5'-0" AFF.
(H25) PROVIDE SUPPLY AND RETURN TRUNKS STUBBED INTO SPACE WITH BIRD SCREEN.
(H26) 48X12 TRANSFER MOUNTED AT 1'-0" AFF. REFER TO ARCHITECTURAL INTERIOR ELEVATIONS FOR MORE INFORMATION.

Issued: Date:
A Client Review Set 02/15/19
B Bid Set 03/08/19
C
D
Revisions: Date:
1
2
3
4
5
6
7
8

DO NOT SCALE PLANS
Copying, Printing, Software and other processes required to produce these prints can stretch or shrink the actual paper or layout. Therefore, scaling of this drawing may be inaccurate. Contact us consultants with any need for additional dimensions or clarifications.

ms consultants, inc.
engineers, architects, planners
920 Main Campus Drive
Suite 430
Raleigh, NC 27606-5213
(919)-772-5565
fax: (919)-779-2308

DRAWN BY: JMM

REVIEWED BY: KFF

Seal
ENGINEER FIRM LICENSE #C-3239
PROFESSIONAL OF RECORD:
DANIEL E. DOWLER No. 042448
EXP. DATE: 12/31/2019

ALDI Inc.
1985 Old Union Church Road
Salisbury, NC 28146
(704) 642-0023
(704) 642-0075 fax

ALDI Inc. Store #: 59
Cary, NC
1315 Kildaire Farm Rd
Cary, NC 27511
Wake County
Project Name & Location:

HVAC Construction Plan
Drawing Name:
Prototype Rls. Project No.
40452-25
Type: v7.1
H-101
Scale: As Noted Drawing No.

Order Plans
D1 HVAC Construction Plan
SCALE: 1/8" = 1'-0"
PLAN NORTH