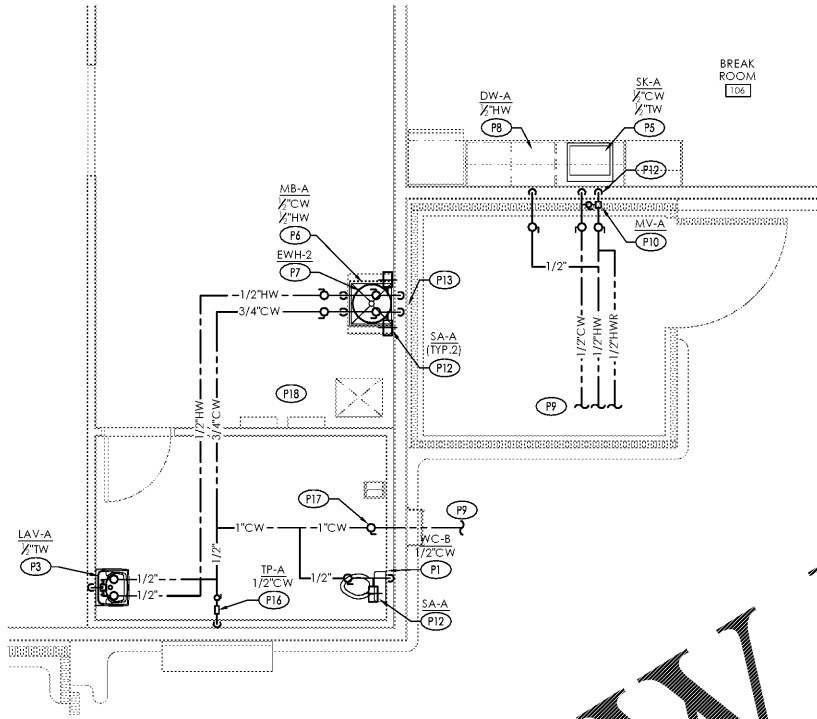


D2 Supply Enlarged Plan (Office)
SCALE: 1/4" = 1'-0"



C2 Supply Enlarged Plan (Break Room)
SCALE: 1/4" = 1'-0"

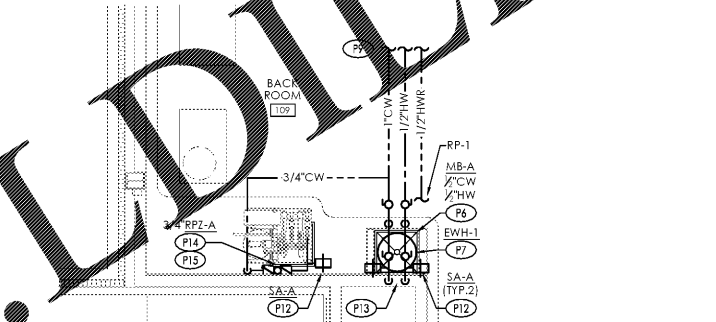


DOMESTIC WATER PLUMBING PLAN KEYNOTES (B2/C2/D2):

- P1 PROVIDE WATER CLOSET AND PIPING CONNECTIONS.
- P2 PROVIDE URINAL AND PIPING CONNECTIONS.
- P3 PROVIDE LAVATORY AND PIPING CONNECTIONS.
- P4 PROVIDE DRINKING FOUNTAIN AND PIPING CONNECTIONS.
- P5 PROVIDE SINK AND PIPING CONNECTIONS.
- P6 PROVIDE MOP BASIN AND PIPING CONNECTIONS.
- P7 PROVIDE ELECTRIC WATER HEATER. REFER TO ARCHITECTURAL DRAWINGS FOR WATER HEATER SHELF.
- P8 PROVIDE DISHWASHER AND PIPING CONNECTIONS.
- P9 REFER TO PLUMBING DRAWING P-101 FOR CONTINUATION.
- P10 PROVIDE TEMPERING MIXING VALVE, MOUNT ABOVE CEILING IN ACCESSIBLE LOCATION.
- P11 PROVIDE 1/2" & 3/4" CW DN. IN WALL TO SINK.
- P12 PROVIDE WATER HAMMER SHOCK ABSORBER ABOVE UNIT SERVED. LOCATION SHOWN FOR CLARITY PURPOSES ONLY.
- P13 PROVIDE 1/2" CW & 1/2" HW DN. IN WALL TO MOP BASIN.
- P14 PROVIDE RIGID WATER PIPE SUPPORT ON EACH SIDE OF PIPING CHANGING DIRECTION UPSTREAM OF VAC SYSTEM CONNECTIONS. INSTALL SHOCKSTOP AS CLOSE AS POSSIBLE TO QUICK-CLOSING VALVES. PROVIDE UNISTRUT SUPPORT WITH HOLDRITE 257-P SIZES UNDER 1" PIPE SIZE AND 257-SERIES 1" UP TO 2" PIPE SIZE STRUT CLAMP WITH ACROUSTICAL...
- P15 PROVIDE REDUCED PRESSURE ZONE ASSEMBLY BACKFLOW DEVICE AND 3/4" CW TO VAC. SYSTEM; P.C. SHALL MAKE ALL FINAL CONNECTIONS. MOUNT RPZ-1 BETWEEN 30" AND 60" AFF.
- P16 PROVIDE TRAP PRIMER FOR FLOOR DRAINS. REFER TO DETAIL C1/P-401.
- P17 TENANT SERVICE SHUTOFF LOCATED ABOVE CEILING.
- P18 DO NOT ROUTE BRANCH DOMESTIC WATER PIPING ABOVE ELECTRICAL EQUIPMENT.
- P19 PROVIDE 3/4" ANTI-FREEZE LOCKABLE BOX WALL HYDRANT. MOUNT 18" ABOVE FINISHED GRADE.

GENERAL DOMESTIC WATER NOTES:

1. REFER TO DETAIL A1/P-401 AND ISOMETRIC DIAGRAM B1/P-301.
2. PROVIDE DOMESTIC CW & HW PIPING. PIPING SHALL BE COPPER OR CPVC WATER SUPPLY PIPING. CPVC PIPING SHALL BE APPROVED FOR POTABLE WATER SYSTEMS.
3. ROUTE CW & HW SUPPLY PIPING ABOVE CEILING.
4. ALL WATER PIPING SHALL BE ROUTED AWAY FROM ELECTRICAL EQUIPMENT WHEN POSSIBLE. REFER TO P-501 GENERAL NOTES FOR ROUTING INFORMATION.
5. EXISTING WATER METER LOCATED AT EXTERIOR.



B2 Supply Enlarged Plan (Backroom)
SCALE: 1/4" = 1'-0"

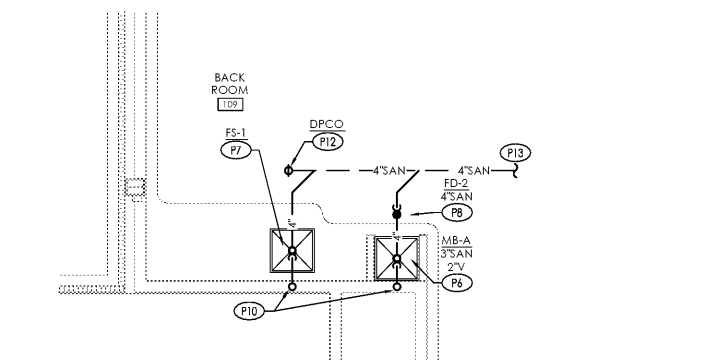


SANITARY PLUMBING PLAN KEYNOTES (B1/C1/D1):

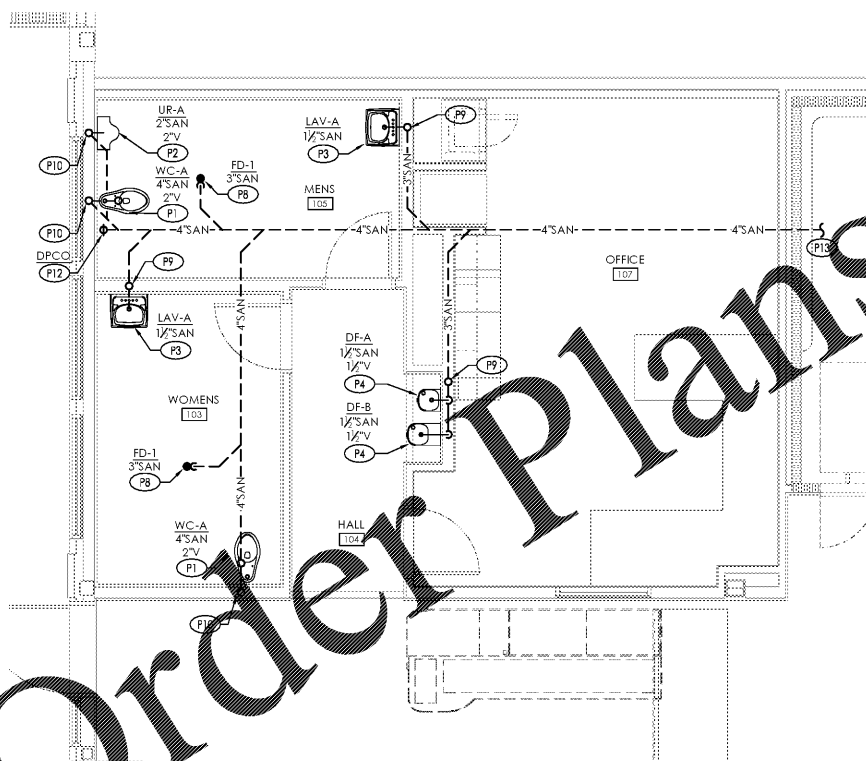
- P1 PROVIDE WATER CLOSET AND PIPING CONNECTIONS.
- P2 PROVIDE URINAL AND PIPING CONNECTIONS.
- P3 PROVIDE LAVATORY AND PIPING CONNECTIONS.
- P4 PROVIDE DRINKING FOUNTAIN AND PIPING CONNECTIONS.
- P5 PROVIDE SINK, GARBAGE DISPOSAL AND PIPING CONNECTIONS.
- P6 PROVIDE MOP BASIN AND PIPING CONNECTIONS.
- P7 PROVIDE INDIRECT WASTE FROM VAC SYSTEM TO FS-1. COORDINATE WITH REFRIGERATION CONTRACTOR, G.C., AND ALDI FIELD REPRESENTATIVE SUCH THAT A CODE COMPLIANT AIR GAP IS MAINTAINED PRIOR TO ROUGH-IN.
- P8 PROVIDE FLOOR DRAIN. LOCATE DRAIN TO BE CLEAR OF PALLET BUMPER.
- P9 1-1/2" UP. REFER TO SANITARY ISOMETRIC DIAGRAM D1/P-301 FOR CONTINUATION.
- P10 2" UP. REFER TO SANITARY ISOMETRIC DIAGRAM D1/P-301 FOR CONTINUATION.
- P11 PROVIDE DISHWASHER AND PIPING CONNECTIONS. ROUTE DRAIN TO GARBAGE DISPOSAL OR SINK TAIL PIECE VIA CODE-COMPLIANT AIR GAP.
- P12 PROVIDE DECK PLATE CLEANOUT. REFER TO DETAIL D1/P-401.
- P13 REFER TO PLUMBING DRAWING P-101 FOR CONTINUATION.
- P14 PROVIDE 3" HUB DRAIN, HD-1. FOR COOLER/FREEZER CONDENSATE. COORDINATE WITH REFRIGERATION CONTRACTOR, G.C., AND ALDI FIELD REPRESENTATIVE SUCH THAT A CODE COMPLIANT AIR GAP IS MAINTAINED PRIOR TO ROUGH-IN. REFER TO DETAIL B2/P-401 AND LOCATION PLAN P-102.

SANITARY NOTE:

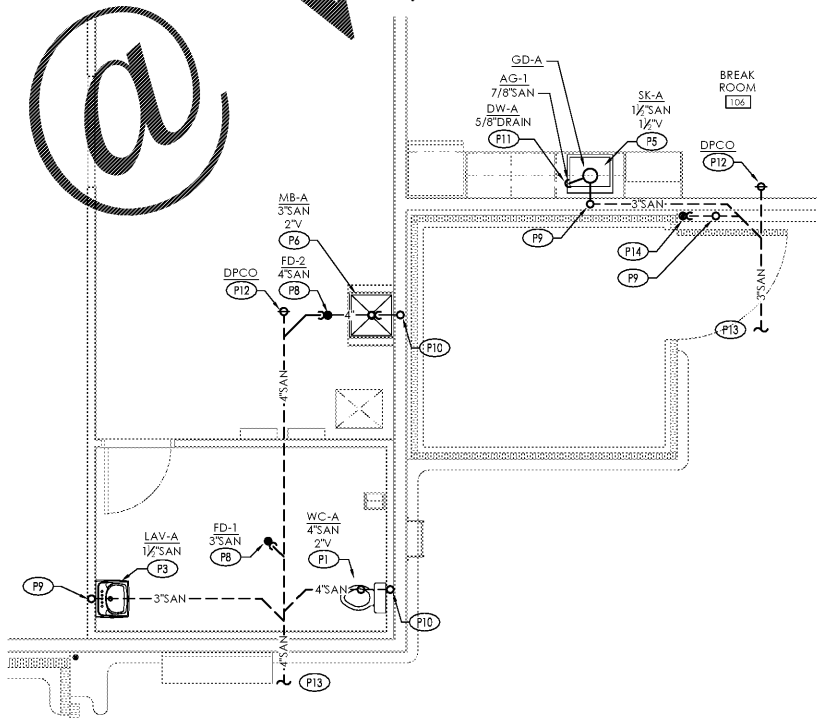
PRIOR TO BID, P.C. AND G.C. SHALL VERIFY SANITARY SEWER SYSTEM LOCATION, ROUTING, PITCHES, INVERTS, SIZES AND TIE-IN POINT. ALL SEWER SYSTEM INFORMATION SHALL BE COORDINATED WITH ALDI, INC. REPRESENTATIVE AT TIME OF BID WALK-THROUGH. INFORM PLUMBING ENGINEER OF ANY AND ALL DISCREPANCIES FROM WORK SHOWN ON PLUMBING DRAWINGS PRIOR TO BID DATE



B1 Sanitary Enlarged Plan (Backroom)
SCALE: 1/4" = 1'-0"



D1 Sanitary Enlarged Plan (Office)
SCALE: 1/4" = 1'-0"



C1 Sanitary Enlarged Plan (Break Room)
SCALE: 1/4" = 1'-0"



Issued:	Date:
A Client Review Set	02/15/19
B Bid Set	03/08/19
C	
D	
Revisions:	Date:
1	
2	
3	
4	
5	
6	
7	
8	

DO NOT SCALE PLANS
Copying, Printing, Software and other processes required to produce these prints can stretch or shrink the actual paper or layout. Therefore, scaling of this drawing may be inaccurate. Contact us consultants with any need for additional dimensions or clarifications.

ms consultants, inc.
engineers, architects, planners
920 Main Campus Drive
Suite 430
Raleigh, NC 27606-5213
(919)-772-5565
fax: (919)-779-2308

DRAWN BY: JMM

REVIEWED BY: KFF

Seal

ENGINEER FIRM LICENSE #C-3239
PROFESSIONAL OF RECORD:
DANIEL E. DOWLER No. 042448
EXP. DATE: 12/31/2019

ALDI Inc.
1985 Old Union Church Road
Salisbury, NC 28146
(704) 642-0023
(704) 642-0079 fax

ALDI Inc. Store #: 59
Cary, NC
1315 Kildaire Farm Rd
Cary, NC 27511
Wake County
Project Name & Location:

Enlarged Plumbing Plans Drawing Name:	
Prototype Rls.	Project No.
	40452-25
Type: v7.1	
	P-201
Scale: As Noted	Drawing No.

Order Plans

WWW.LDOWLER@LDOWLER.COM