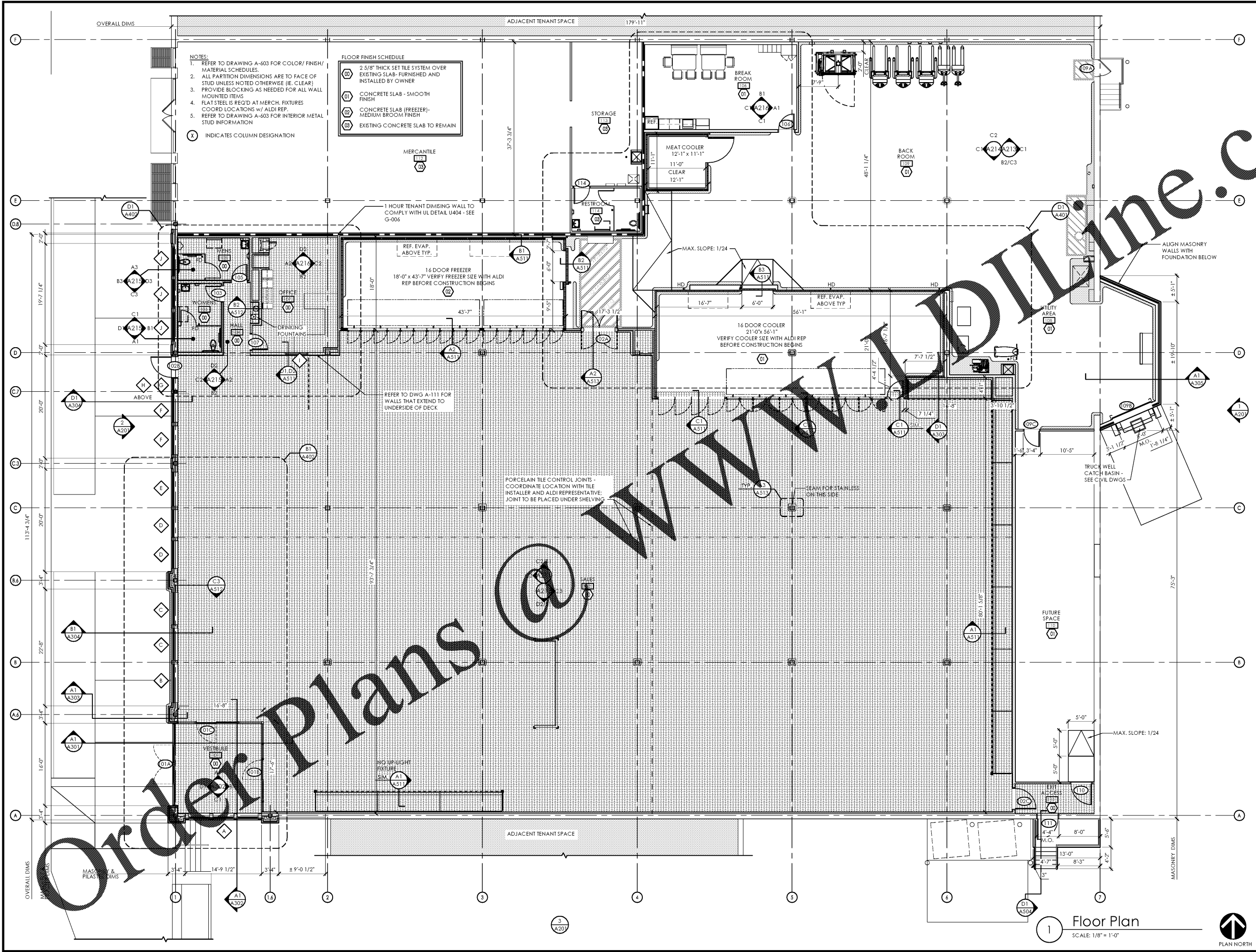


Plot Date: 3/8/2019



NOTES:
 1. REFER TO DRAWING A-603 FOR COLOR/ FINISH/ MATERIAL SCHEDULES.
 2. ALL PARTITION DIMENSIONS ARE TO FACE OF STUD UNLESS NOTED OTHERWISE (IE. CLEAR)
 3. PROVIDE BLOCKING AS NEEDED FOR ALL WALL MOUNTED ITEMS
 4. FLAT STEEL IS REQ'D AT MERCH. FIXTURES COORD LOCATIONS W/ ALDI REP.
 5. REFER TO DRAWING A-603 FOR INTERIOR METAL STUD INFORMATION
 (X) INDICATES COLUMN DESIGNATION

FLOOR FINISH SCHEDULE

00	2 5/8" THICK SET TILE SYSTEM OVER EXISTING SLAB- FURNISHED AND INSTALLED BY OWNER
01	CONCRETE SLAB - SMOOTH FINISH
02	CONCRETE SLAB (FREEZER)- MEDIUM BROOM FINISH
03	EXISTING CONCRETE SLAB TO REMAIN

Issued:	Date:
A Client Review Set	02/15/19
B Bid Set	03/08/19
C	
D	
Revisions:	
1	Date:
2	
3	
4	
5	
6	
7	
8	

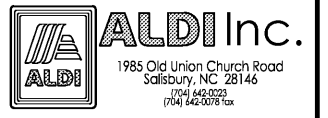
DO NOT SCALE PLANS
 Copying, Printing, Software and other processes required to produce these prints can stretch or shrink the actual paper or layout. Therefore, scaling of this drawing may be inaccurate. Contact ms consultants with any need for additional dimensions or clarifications.

ms consultants, inc.
 engineers, architects, planners
 920 Main Campus Drive
 Suite 430
 Raleigh, NC 27606-5213
 (919)-772-5565
 fax: (919)-779-2308

DRAWN BY: MEM/BMT

REVIEWED BY: NAL/CMB

Seal



ALDI Inc. Store #: 59
 Cary, NC
 1315 Kildaire Farm Rd
 Cary, NC 27511
 Wake County
 Project Name & Location:

Floor Plan	
Drawing Name:	Project No.
Prototype Rls.	40452-25
Type: V7.1	
	A-101
Scale: As Noted	Drawing No.

1 Floor Plan
 SCALE: 1/8" = 1'-0"
 PLAN NORTH