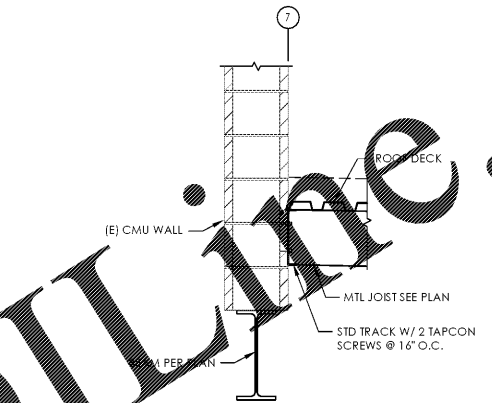
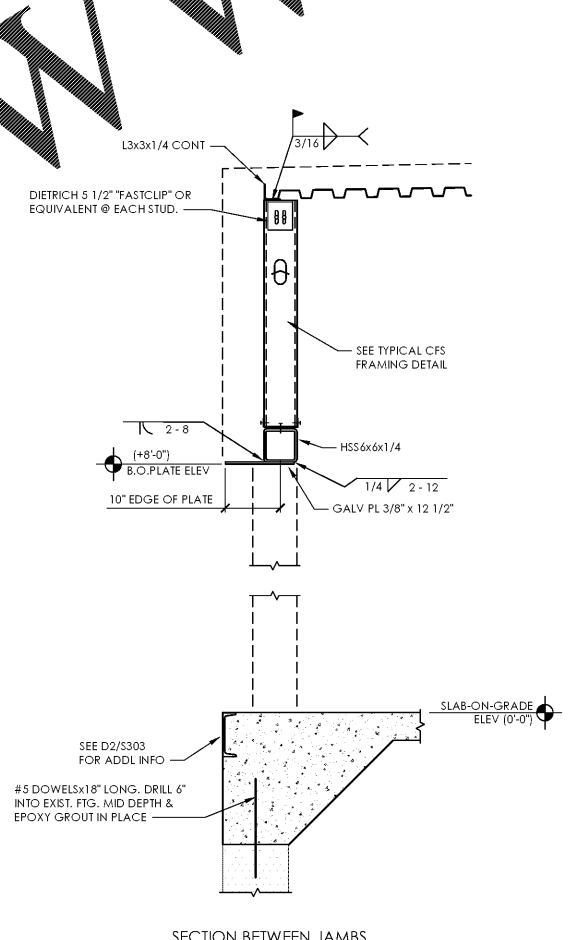


- POCKET EXISTING MASONRY WALL AT BEAM BEARINGS.  
- PROVIDE SOLID MASONRY AT EACH BEARING (NEW MASONRY TO MATCH EXISTING.)  
- GROUT AND LEVEL BEARING PLATE IN PLACE.
- CUT INTO EXISTING WALL 2 1/4\"/>

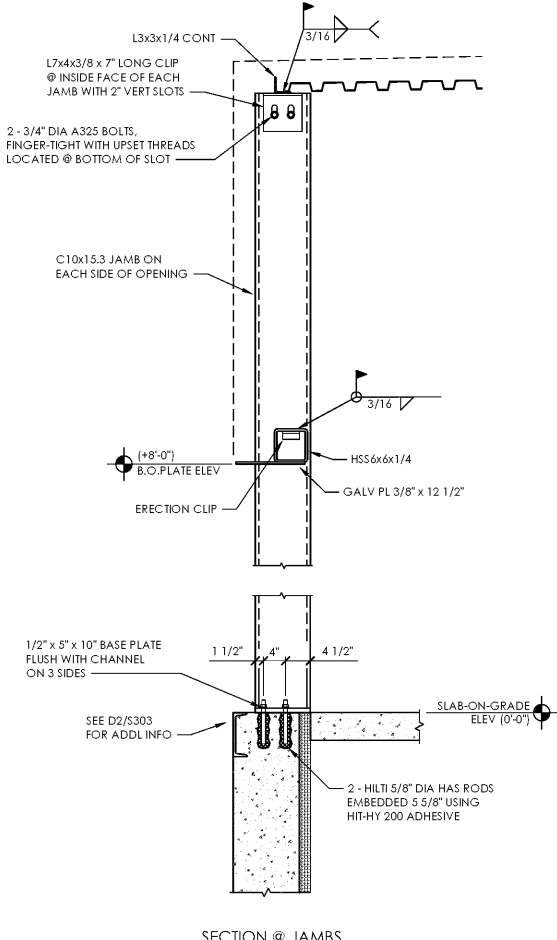
**B3** Detail at New Opening in CMU Wall  
NO SCALE



**A3** Section  
SCALE: 3/4\"/>



**A1** Section @ Overhead Door  
SCALE: 3/4\"/>



Issued:	Date:
A Client Review Set	02/15/19
B Bid Set	03/08/19
C	
D	
Revisions:	
1	Date:
2	
3	
4	
5	
6	
7	
8	

**DO NOT SCALE PLANS**  
Copying, Printing, Software and other processes required to produce these prints can stretch or shrink the actual paper or layout. Therefore, scaling of this drawing may be inaccurate. Contact us consultants with any need for additional dimensions or clarifications.

**ms consultants, inc.**  
engineers, architects, planners  
920 Main Campus Drive  
Suite 430  
Raleigh, NC 27606-5213  
(919)-772-5565  
fax: (919)-779-2308

DRAWN BY: JLH

REVIEWED BY: CJH

Seal  
2

PROFESSIONAL OF RECORD:  
CRAIG E. METZGER No. 044723

**ALDI Inc.**  
1985 Old Union Church Road  
Salisbury, NC 28146  
(704) 642-0023  
(704) 642-0079 fax

ALDI Inc. Store #: 59  
Cary, NC  
1315 Kildaire Farm Rd  
Cary, NC 27511  
Wake County  
Project Name & Location:

**Framing Details**

Drawing Name:	Project No.
Prototype Rls.	40452-25
Type: V7.1	
	S-404
Scale: As Noted	Drawing No.

Order Plans @ WWW.LDILLINE.COM