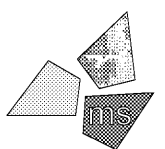


Issued:	Date:
A Client Review Set	02/15/19
B Bid Set	03/08/19
C	
D	
Revisions:	Date:
1	
2	
3	
4	
5	
6	
7	
8	

**DO NOT SCALE PLANS**  
 Copying, Printing, Software and other processes required to produce these prints can stretch or shrink the actual paper or layout. Therefore, scaling of this drawing may be inaccurate. Contact us consultants with any need for additional dimensions or clarifications.



**ms consultants, inc.**  
 engineers, architects, planners  
 920 Main Campus Drive  
 Suite 430  
 Raleigh, NC 27606-5213  
 (919)-772-5565  
 fax: (919)-779-2308

DRAWN BY: JLH

REVIEWED BY: CJH

Seal

2

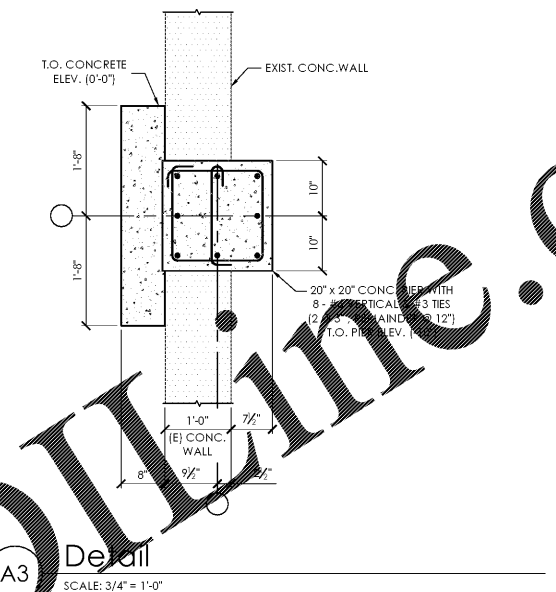
PROFESSIONAL OF RECORD:  
 CRAIG E. METZGER No. 044723



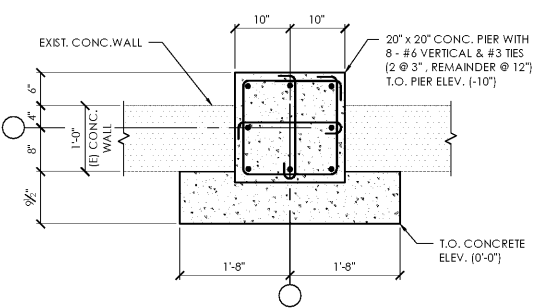
ALDI Inc. Store #: 59  
 Cary, NC  
 1315 Kildaire Farm Rd  
 Cary, NC 27511  
 Wake County  
 Project Name & Location:

**Foundation Details**

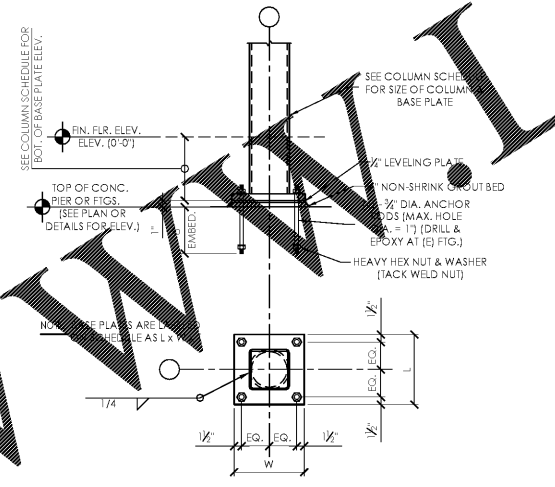
Drawing Name:	Project No.
Prototype Rls.	40452-25
Type: V7.1	S-301
Scale: As Noted	Drawing No.



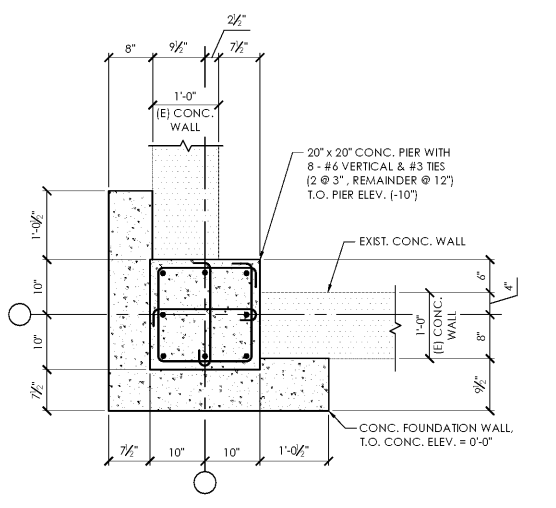
**A3 Detail**  
 SCALE: 3/4" = 1'-0"



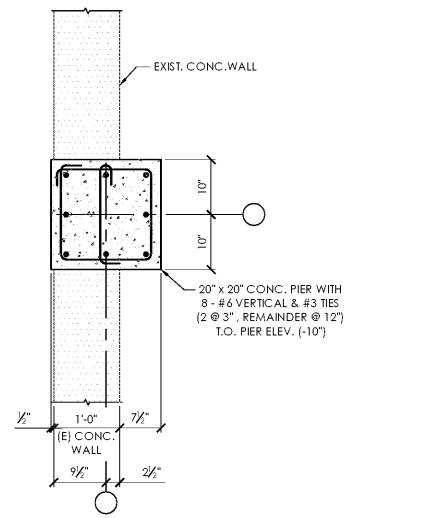
**A2 Detail**  
 SCALE: 3/4" = 1'-0"



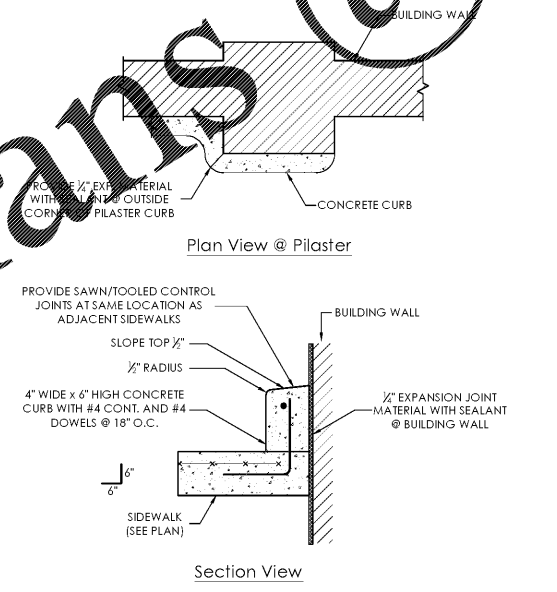
**B2 Typical Column Base Detail**  
 SCALE: 3/4" = 1'-0"



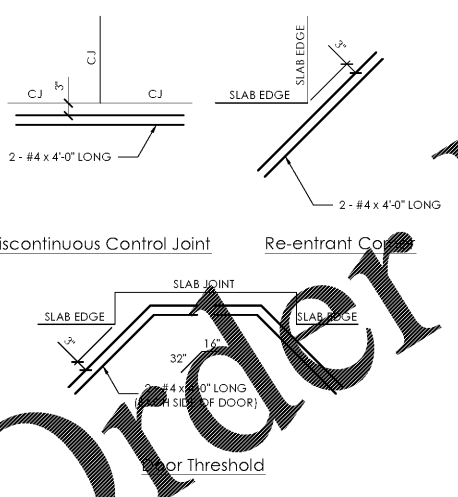
**A1 Detail**  
 SCALE: 3/4" = 1'-0"



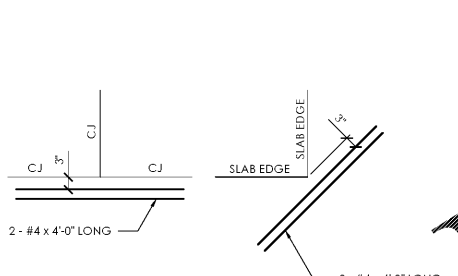
**B1 Detail**  
 SCALE: 3/4" = 1'-0"



**C1 Typ. Concrete Curb Detail**  
 NO SCALE



**D1 Typ. Concrete Slab Details**  
 SCALE: 3/4" = 1'-0"



**D2 Typ. Concrete Slab Details**  
 SCALE: 3/4" = 1'-0"

Plot Date: 3/7/2019

WWW.LDILLINE.COM

Order Plans @

D

C

B

A