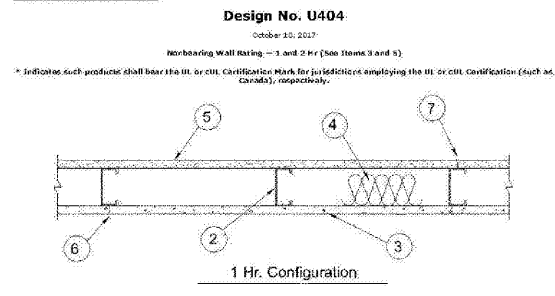


ONLINE CERTIFICATIONS DIRECTORY
IMPROVED CERTIFICATIONS SEARCH TOOL REGISTER NOW!

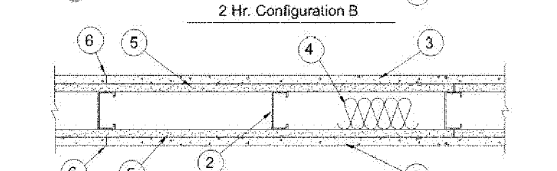
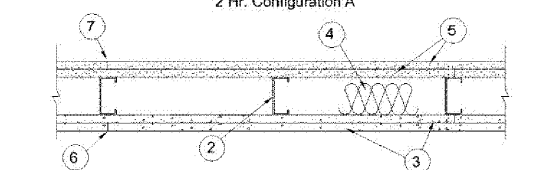
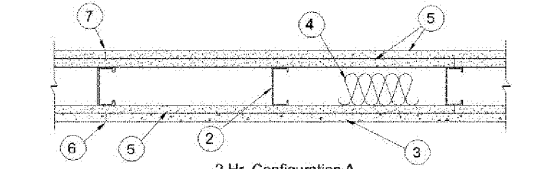
Design No. U404
BXUV.U404
Fire-resistance Ratings - ANSUL 263

BXUV - Fire Resistance Ratings - ANSUL 263 Certified for United States
BXUV7 - Fire Resistance Ratings - CAN/ULC-S101 Certified for Canada



1 Hr. Configuration

UL Assembly - U404



- 1. Steel Floor and Ceiling Runners - (Not Shown) - Channel shaped, 3-1/2 in. wide by 1-3/4 in. deep...
2. Steel Studs - Channel shaped, fabricated from 20-20 M50 cold-rolled galvanized steel...
3. Channel-Lock Ratchet Strips - 1/2 in. or 5/8 in. thick, applied vertically or horizontally...

http://database.ul.com/cgi-bin/XYV/template/LISEXT/FRAME/showpage.html?name=B... 12/6/2018

- 4. Batts and Blankets - 1-1/2 in. thick mineral wool insulation batts, factory-fitted between studs...
JOHNS MANVILLE - Type SAF
ROCKWOOL - Type AFB
THERMAFIBER INC - Type SAFS, SAFR FF
5. Gypsum Board - 5/8 in. thick, with square or tapered edges, applied vertically or horizontally with vertical joints centered over studs...

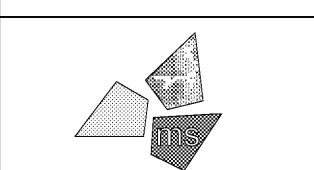
http://database.ul.com/cgi-bin/XYV/template/LISEXT/FRAME/showpage.html?name=B... 12/6/2018

- 6. Joints - Covered with glass fiber mesh tape and latex modified Portland cement mortar or basecoat, or Type 3 organic adhesive...
7. Joints - When tapered edge gypsum board is used, face layer joints covered with joint compound and paper tape...
8. Vapor Barrier, Water Barrier or Weather Resistive Barrier - (Optional - Not shown) - As required...

http://database.ul.com/cgi-bin/XYV/template/LISEXT/FRAME/showpage.html?name=B... 12/6/2018

Table with columns: Issued, Date, Revisions, Date. Row 1: Client Review Set, 02/15/19. Row 2: Bid Set, 03/08/19.

DO NOT SCALE PLANS
Copying, Printing, Software and other processes required to produce these prints can stretch or shrink the actual paper or layout. Therefore, scaling of this drawing may be inaccurate.

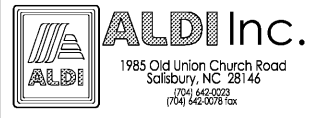


ms consultants, inc.
engineers, architects, planners
920 Main Campus Drive
Suite 430
Raleigh, NC 27606-5213
(919)-772-5565
fax: (919)-779-2308

DRAWN BY: MEM/BMT
REVIEWED BY: NAL/CMB

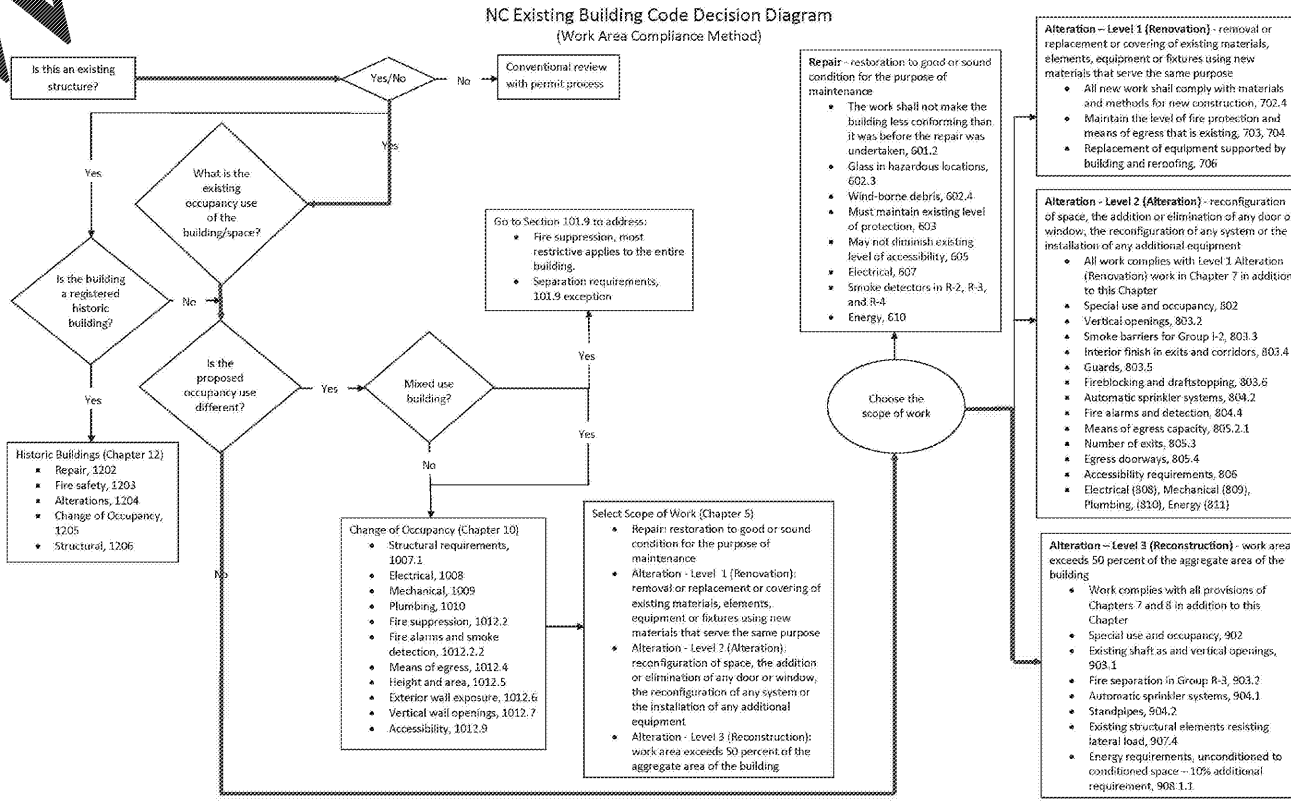
Seal

3/11/15



ALDI Inc. Store #: 59
Cary, NC
1315 Kildaire Farm Rd
Cary, NC 27511
Wake County
Project Name & Location:

UL Assembly & Code Decision Diagram
Drawing Name:
Prototype Rls. Project No.
Type: v7.1 40452-25
Scale: As Noted Drawing No. G-006



Code Decision Diagram