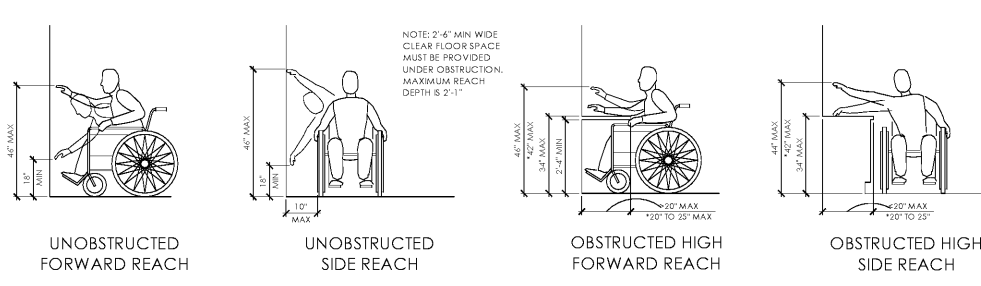


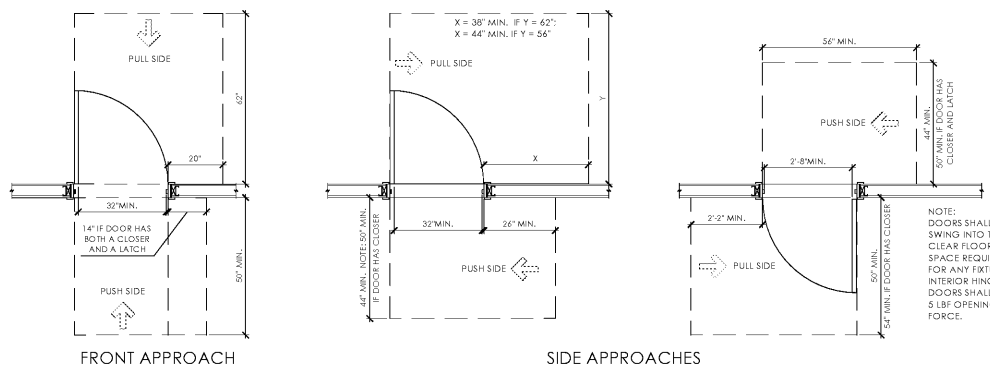
ACCESSIBLE SPACE ALLOWANCE

SCALE: 3/8" = 1'-0"



ACCESSIBLE REACH RANGES

SCALE: 3/8" = 1'-0"



ACCESSIBLE DOOR MANEUVERING CLEARANCES

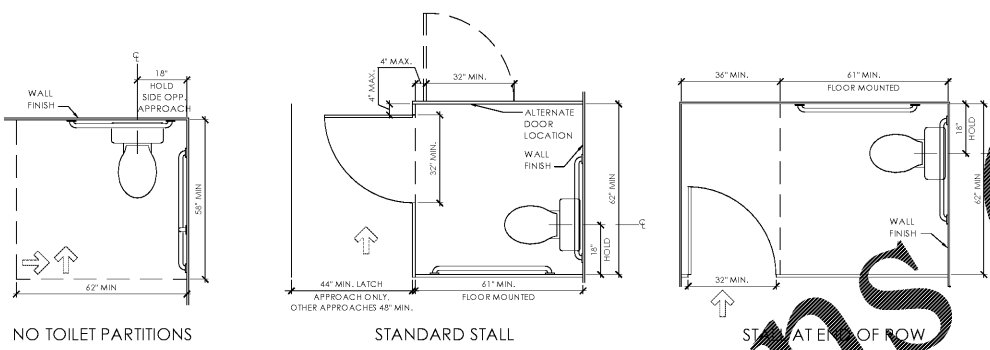
SCALE: 3/8" = 1'-0"

ACCESSIBLE OUTLETS, SWITCHES, & OPERABLE CONTROLS

SCALE: 3/8" = 1'-0"

ACCESSIBLE SIGNAGE

SCALE: 3/8" = 1'-0"



ACCESSIBLE WATER CLOSET - PLAN

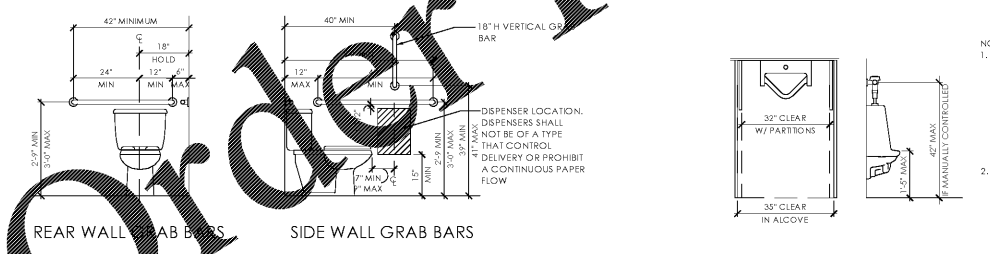
SCALE: 3/8" = 1'-0"

ACCESSIBLE CHECKOUT COUNTER

SCALE: 3/8" = 1'-0"

PROTRUDING OBJECTS

SCALE: 3/8" = 1'-0"



ACCESSIBLE WATER CLOSET - ELEVATION

SCALE: 3/8" = 1'-0"

ACCESSIBLE URINAL

SCALE: 3/8" = 1'-0"

ACCESSIBLE LAVATORY/SINK AND MIRROR

SCALE: 3/8" = 1'-0"

ACCESSIBLE DRINKING FOUNTAIN

SCALE: 3/8" = 1'-0"

ACCESSIBILITY NOTES

- TURNING SPACE**
 - ALL ROOMS SHALL BE SERVICED BY AN ACCESSIBLE ROUTE, AND SHALL PROVIDE A TURNING RADIUS 62" MINIMUM DIAMETER CIRCULAR SPACE OR T-SHAPED SPACE WITH 62" MINIMUM SQUARE, WITH ARMS AND BASE 38" MINIMUM IN WIDTH.
- ACCESSIBLE ROUTES**
 - ACCESSIBLE ROUTES SHALL BE 3'-0" WIDE MINIMUM.
- OPERABLE PARTS**
 - THE ENTIRE OPERABLE PARTS SHALL FALL WITHIN THE REQUIRED REACH RANGES
 - OPERABLE PARTS SHALL BE OPERABLE WITH ONE HAND AND SHALL REQUIRE TIGHT GRASPING, PINCHING, OR TWISTING OF THE WRISTS. THE FORCE REQUIRED TO ACTIVATE OPERABLE PARTS SHALL BE 5.0 POUNDS MAXIMUM.
- SIGNAGE**
 - REFER TO ANSI §703 FOR COMPLETE SIGNAGE REQUIREMENTS
 - VISUAL SIGNAGE MUST BE 3'-5" MIN A.F.F. AND LETTERING MUST BE 5/8" MIN AND HIGH-CONTRAST
 - CHARACTERS IN TACTILE AND BRAILLE SIGNAGE MUST BE BETWEEN 5/8" AND 4-11/16"
- DOORS AND DOORWAYS**
 - PRIMARY ENTRANCES SHALL BE ACCESSIBLE AND LOCATED ON AN ACCESSIBLE ROUTE.
 - A CLEAR OPENING OF 32" SHALL BE PROVIDED
- TOILET FACILITIES**
 - AT LEAST ONE LAVATORY, ONE WATER CLOSET SHALL MEET ALL ANSI AND 2010 ADA REQUIREMENTS
 - DOORS SHALL NOT SWING INTO THE CLEAR FLOOR SPACE OR CLEARANCE FOR ANY FIXTURE
 - EXCEPTION: WHERE A 32" X 50" CLEAR FLOOR SPACE IS PROVIDED WITHIN THE ROOM BEYOND THE SWING OF THE DOOR.
 - IN ALL FLOOR SPACES, CLEARANCES AT FIXTURES AND TURNING SPACES ARE PERMITTED TO OVERLAP.
 - REINFORCEMENT SHALL BE PROVIDED FOR INSTALLATION OF GRAB BARS AND SHOWER SEATS AT WATER CLOSETS, BATHTUBS AND SHOWER COMPARTMENTS AS REQUIRED.
- LAVATORY**
 - PROVIDE A 32" X 50" CLEAR FLOOR SPACE POSITIONED FOR FORWARD APPROACH
 - THE FRONT OF LAVATORIES AND SINKS SHALL BE 33-1/2" MAXIMUM A.F.F. MEASURED TO THE HIGHER OF THE RIM OR COUNTER SURFACE.
 - THE DEPTH OF THE SINK BOWL SHALL BE 6 1/2" MAXIMUM.
 - MULTIPLE-COMPARTMENT SINKS SHALL HAVE AT LEAST ONE COMPARTMENT COMPLYING WITH THIS REQUIREMENT.
 - EXPOSED PIPES AND SURFACES UNDER LAVATORIES AND SINKS SHALL BE INSULATED OR OTHERWISE CONFIGURED TO PROTECT AGAINST CONTACT. THERE SHALL BE NO SHARP OR ABRASIVE SURFACES UNDER LAVATORIES AND SINKS.
- MIRRORS**
 - MIRRORS ABOVE LAVATORIES SHALL HAVE THE BOTTOM EDGE OF THE REFLECTING SURFACE 40" MAXIMUM A.F.F.
- WATER CLOSET**
 - THE REQUIRED CLEARANCE AROUND THE WATER CLOSET SHALL BE PERMITTED TO OVERLAP THE WATER CLOSET, ASSOCIATED GRAB BARS, PAPER DISPENSERS, COAT HOOKS, SHELVES, ACCESSIBLE ROUTES, CLEAR FLOOR SPACE REQUIRED AT OTHER FIXTURES AND THE WHEELCHAIR TURNING SPACE. NO OTHER FIXTURES OR OBSTRUCTIONS SHALL BE LOCATED WITHIN THE REQUIRED WATER CLOSET CLEARANCE.
 - THE TOP OF THE WATER CLOSET SEAT SHALL BE 15" MINIMUM AND 19" MAXIMUM A.F.F.
 - A WALL CAPABLE OF SUPPORTING GRAB BARS IN WEIGHT AND DIMENSION MUST BE PROVIDED AT THE SIDE OF THE WATER CLOSET, 18" FROM THE EDGE OF THE WATER CLOSET TO FINISHED WALL SURFACE. SWING-DOWN GRAB BARS ARE NOT PERMITTED.
- SINK**
 - PROVIDE A 32" X 50" CLEAR FLOOR AREA POSITIONED FOR FORWARD APPROACH. THE CLEAR FLOOR SPACE SHALL BE CENTERED ON THE SINK BOWL.
 - THE REQUIREMENT FOR KNEE AND TOE CLEARANCE SHALL NOT APPLY TO MORE THAN ONE BOWL OF A MULTI-BOWL SINK.
 - THE FRONT OF LAVATORIES AND SINKS SHALL BE 33-1/2" MAXIMUM A.F.F. MEASURED TO THE HIGHER OF THE RIM OR COUNTER SURFACE.
 - THE DEPTH OF THE SINK BOWL SHALL BE 6 1/2" MAXIMUM.
 - MULTIPLE-COMPARTMENT SINKS SHALL HAVE AT LEAST ONE COMPARTMENT COMPLYING WITH THIS REQUIREMENT.
 - ALL EXPOSED PIPES AND SURFACES UNDER LAVATORIES AND SINKS SHALL BE INSULATED OR OTHERWISE CONFIGURED TO PROTECT AGAINST CONTACT AND THERE SHALL BE NO SHARP OR ABRASIVE SURFACES UNDER LAVATORIES AND SINKS.
- CHECKOUT COUNTERS AND AISLES**
 - PROVIDE CHECKOUT AISLES THAT COMPLY WITH ANSI 904.4. MINIMUM WIDTH OF 36"
 - CHECKOUT COUNTER SURFACE SHALL BE 38" A.F.F. MAX. TOP OF COUNTER EDGE PROTECTION SHALL BE 2" MAX ABOVE THE COUNTER SURFACE ON THE AISLE SIDE OF THE CHECKOUT COUNTER.

Issued:	Date:
A Client Review Set	02/15/19
B Bid Set	03/08/19
C	
D	
Revisions:	Date:
1	
2	
3	
4	
5	
6	
7	
8	

DO NOT SCALE PLANS
Copying, Printing, Software and other processes required to produce these prints can stretch or shrink the actual paper or layout. Therefore, scaling of this drawing may be inaccurate. Contact us consultants with any need for additional dimensions or clarifications.

ms consultants, inc.
engineers, architects, planners
920 Main Campus Drive
Suite 430
Raleigh, NC 27606-5213
(919)-772-5565
fax: (919)-779-2308

DRAWN BY: MEM/BMT

REVIEWED BY: NAL/CMB

Seal

ALDI Inc.
1985 Old Union Church Road
Salisbury, NC 28146
(704) 642-0073
(704) 642-0076 fax

ALDI Inc. Store #: 59
Cary, NC
1315 Kildaire Farm Rd
Cary, NC 27511
Wake County
Project Name & Location:

Accessibility Standards	
Drawing Name:	
Prototype Rls.	Project No.
	40452-25
Type: v7.1	
	G-004
Scale: As Noted	Drawing No.