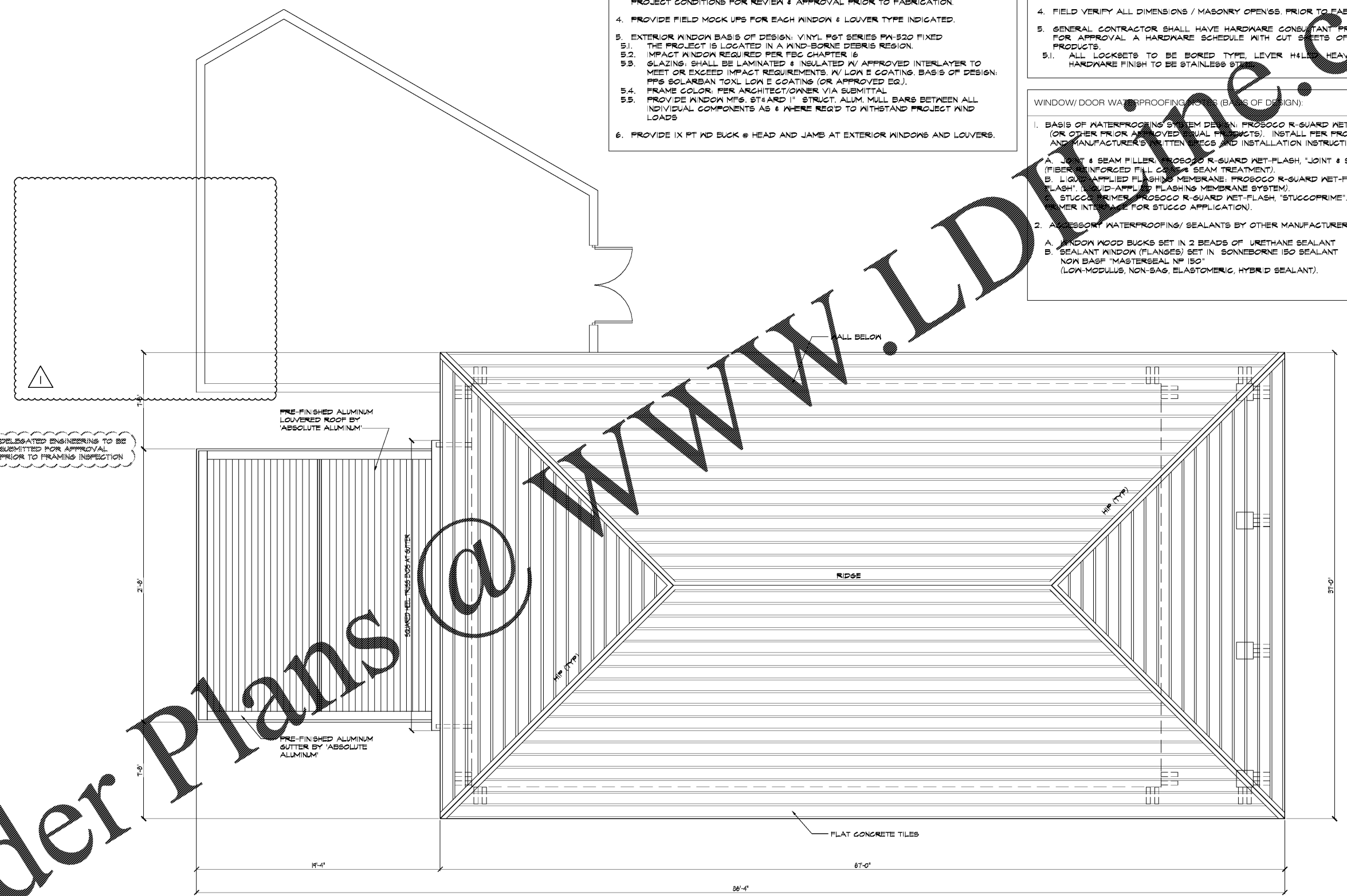


- WINDOW NOTES:
- DIMENSIONS INDICATED ARE APPROXIMATE - FIELD VERIFY ALL DIMENSIONS PRIOR TO FABRICATION. G.C. TO CONFIRM MASONRY OPENINGS SIZES WITH MANUFACTURER. ALL ELEVATIONS ARE DRAWN LOOKING FROM EXTERIOR OF UNITS.
 - INSTALLATION TO BE PER FL. PRODUCT APPROVAL NUMBER. ANY DEVIATIONS WILL REQUIRE FL. PE SIGNED & SEALED SHOP DRAWINGS &/ OR LETTER TO CONFIRM ASSEMBLY WITHSTANDS PROJECT WIND LOAD REQUIREMENTS.
 - PROVIDE/ SUBMIT PRODUCT DATA & DETAILED SHOP DRAWINGS INDICATING PROJECT CONDITIONS FOR REVIEW & APPROVAL PRIOR TO FABRICATION.
 - PROVIDE FIELD MOCK UPS FOR EACH WINDOW & LOUVER TYPE INDICATED.
 - EXTERIOR WINDOW BASIS OF DESIGN: VINYL P&T SERIES PA-520 FIXED
 - THE PROJECT IS LOCATED IN A WIND-BORNE DEBRIS REGION.
 - IMPACT WINDOW REQUIRED PER FBC CHAPTER 16
 - GLAZING: SHALL BE LAMINATED & INSULATED W/ APPROVED INTERLAYER TO MEET OR EXCEED IMPACT REQUIREMENTS. W/ LOW E COATING. BASIS OF DESIGN: PPG SOLARBAN 70XL LOW E COATING (OR APPROVED EQ.).
 - FRAME COLOR: PER ARCHITECT/OWNER VIA SUBMITTAL
 - PROVIDE WINDOW MFG. STANDARD 1" STRUCT. ALUM. MULL BARS BETWEEN ALL INDIVIDUAL WINDOW COMPONENTS AS & WHERE REQ'D TO WITHSTAND PROJECT WIND LOADS
 - PROVIDE 1X 1/2" BUCK @ HEAD AND JAMB AT EXTERIOR WINDOWS AND LOUVERS.

- GENERAL DOOR NOTES:
- EXTERIOR DOORS TO BE INSTALLED PER FL. PRODUCT APPROVAL # ANY DEVIATIONS WILL REQUIRE FL. PE SIGNED & SEALED SHOP DRAGS &/ OR LETTER TO CONFIRM ASSEMBLY WITHSTANDS PROJECT WIND LOAD REQUIREMENTS. EXTERIOR DOORS AND FRAMES TO BE GALVANIZED AND PAINTED.
 - PROVIDE/ SUBMIT PRODUCT DATA & DETAILED SHOP DRAWINGS INDICATING PROJECT CONDITIONS FOR REVIEW & APPROVAL PRIOR TO FABRICATION.
 - INSTALL PER SPECIFICATIONS & PER MFR. WRITTEN INSTRUCTIONS
 - FIELD VERIFY ALL DIMENSIONS / MASONRY OPENINGS. PRIOR TO FABRICATION.
 - GENERAL CONTRACTOR SHALL HAVE HARDWARE CONSULTANT PREPARE & SUBMIT FOR APPROVAL A HARDWARE SCHEDULE WITH CUT SHEETS OF ALL PROPOSED PRODUCTS.
 - ALL LOCKSETS TO BE BORED TYPE, LEVER HANDLE, HEAVY DUTY GRADE. HARDWARE FINISH TO BE STAINLESS STEEL.

- WINDOW/ DOOR WATERPROOFING NOTES (BASIS OF DESIGN):
- BASIS OF WATERPROOFING SYSTEM DESIGN: PROSOCCO R-GUARD NET-FLASH SYSTEM (OR OTHER PRIOR APPROVED EQUAL PRODUCTS). INSTALL PER PROJECT SPECS AND MANUFACTURER'S WRITTEN SPECS AND INSTALLATION INSTRUCTIONS:
 - JOINT & SEAM FILLER: PROSOCCO R-GUARD NET-FLASH, "JOINT & SEAM FILLER". (FIBER-REINFORCED FILL COMPS & SEAM TREATMENT).
 - LIQUID-APPLIED FLASHING MEMBRANE: PROSOCCO R-GUARD NET-FLASH, "FAST FLASH". (LIQUID-APPLIED FLASHING MEMBRANE SYSTEM).
 - STUCCO PRIMER: PROSOCCO R-GUARD NET-FLASH, "STUCCOPRIME". (FLEXIBLE PRIMER INTERLAYER FOR STUCCO APPLICATION).
 - ASSORT WATERPROOFING/ SEALANTS BY OTHER MANUFACTURERS:
 - WINDOW WOOD BUCKS SET IN 2 BEADS OF URETHANE SEALANT
 - SEALANT WINDOW (FLANGES) SET IN SONNEBORNE 150 SEALANT NOW BASF "MASTERSEAL NP 150" (LOW-MODULUS, NON-SAG, ELASTOMERIC, HYBRID SEALANT).



Order Plans

DESIGNED BY:
 DELOACH ISLAND, LLC
 333 3RD AVENUE NORTH
 SUITE 400
 ST. PETERSBURG, FL 33701

SUNSET POINTE AMENITY BUILDING II
 AT COLLAN Y KEY

TO THE BEST OF THE ARCHITECT'S KNOWLEDGE, BELIEF, AND OPINION, THE ABOVE INFORMATION IS ACCURATE AND COMPLIES WITH ALL APPLICABLE CODES AND REGULATIONS.



CURTIS GAINES HALL JONES
 ARCHITECTS
 1818 E. 8TH AVE
 YBOR CITY
 TAMPA FLORIDA 33605
 PHONE 813-228-8000
 FAX 813-228-0770
 FL. CERT. #AA0001990

JOB NO.	1818
DATE	JUL 18, 2018
DRAWN BY	EV
REV. 1	SEP 27, 2018
REV. 2	JAN 02, 2019
REV. 3	-
REV. 4	-
REV. 5	-
REV. 6	-
REV. 7	-
REV. 8	-
REV. 9	-
REV. 10	-
REV. 11	-
REV. 12	-

ARCHITECT OF RECORD
 Robert D. Hall
 ARE 001408

AMENITY ROOF

A2.20

1 ROOF PLAN
 SCALE: 1/4" = 1'-0"