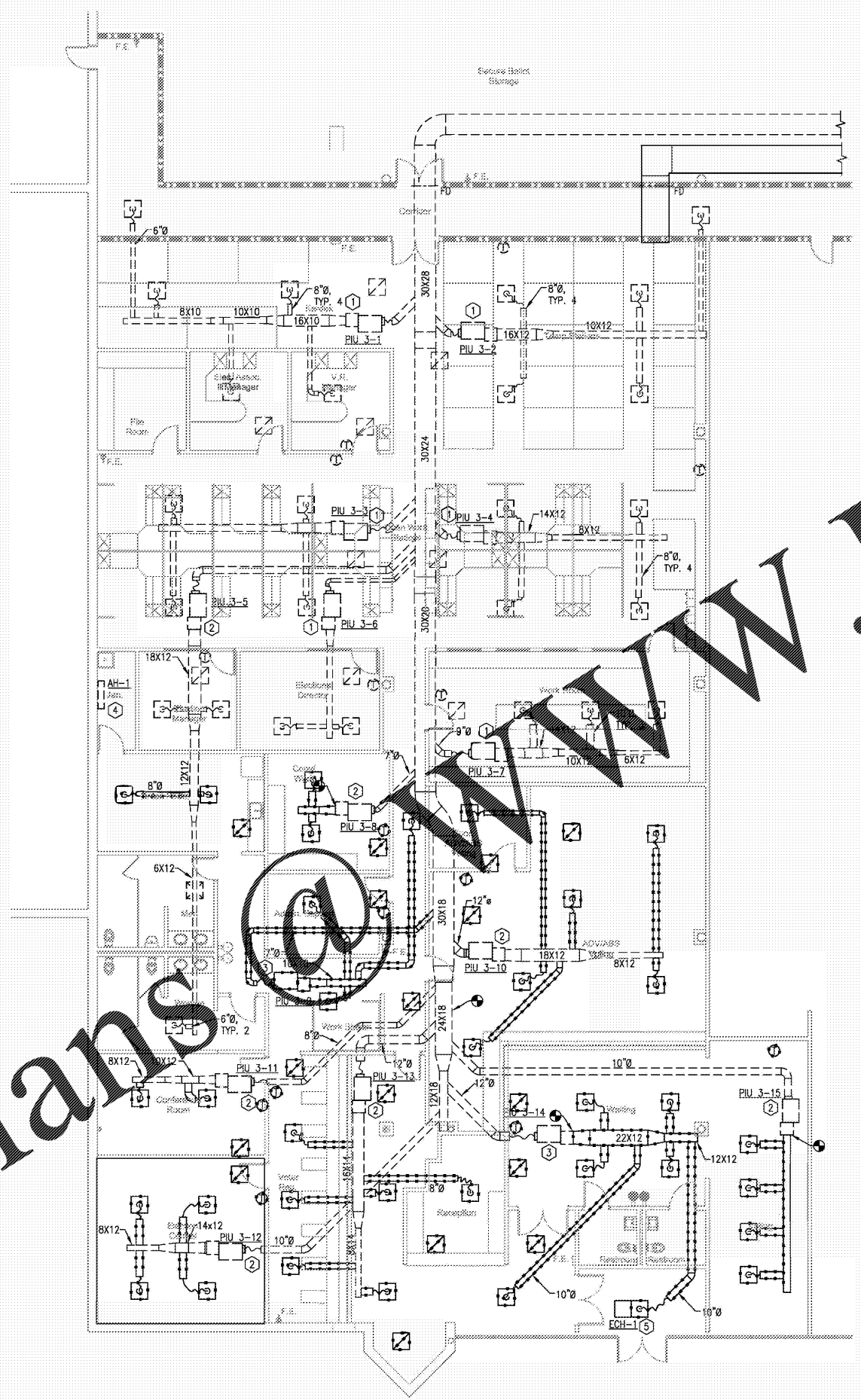


Order Plans @ www.LDILine.com



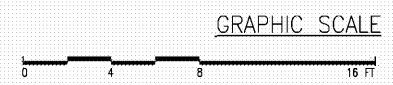
HVAC DEMOLITION PART PLAN
SCALE: 1/8" = 1'-0"

GENERAL NOTES

1. SEE SHEET M0.1 FOR HVAC GENERAL NOTES.

KEY NOTES

1. EXISTING TERMINAL UNIT TO REMAIN.
2. EXISTING TERMINAL UNIT TO REMAIN. REMOVE DOWNSTREAM DUCTWORK AND AIR TERMINALS AS SHOWN. RELOCATE TEMPERATURE SENSOR AS SHOWN ON SHEET M2.1.
3. EXISTING TERMINAL UNIT AND ASSOCIATED TEMPERATURE SENSOR TO BE RELOCATED AS SHOWN ON SHEET M2.1.
4. EXISTING AIR HANDLING UNIT AND ASSOCIATED CONDENSER TO REMAIN.
5. EXISTING CEILING HEATER TO BE RELOCATED AS SHOWN ON SHEET M2.1.



<p>© 2019 LDI ARCHITECTURE, INC. ALL RIGHTS RESERVED. THIS DOCUMENT IS THE PROPERTY OF LD ARCHITECTURE, INC. AND IS TO BE USED ONLY FOR THE PROJECT AND SITE SPECIFICALLY IDENTIFIED HEREON. NO PART OF THIS DOCUMENT IS TO BE REPRODUCED OR TRANSMITTED IN ANY FORM OR BY ANY MEANS, ELECTRONIC OR MECHANICAL, WITHOUT THE WRITTEN PERMISSION FROM LD ARCHITECTURE, INC.</p>		<p>STAMP</p>	
<p>PRECISION Planning Inc. planners • engineers • architects • surveyors 400 Pike Boulevard, Lawrenceville, GA 30046 770.938.8000 • www.ppi.us</p>		<p>GWINNETT COUNTY VOTER REG. AND ELEC. RENOVATION 455 Grayson Highway Suite 200 Lawrenceville, GA 30046</p>	
<p>DATE NO. DESCRIPTION 02/04/19 1 RELEASED FOR BID</p>		<p>DESIGN DRAWN CHECKED GSP GSP GSP TLN</p>	
<p>02-04-19 DATE A19-87AC88 PROJ. NUMBER M1.dwg FILE NAME FILE NUMBER</p>		<p>DEMOLITION PART PLAN</p>	
<p>RELEASE</p>		<p>SHEET TITLE</p>	
<p>M1.1</p>			