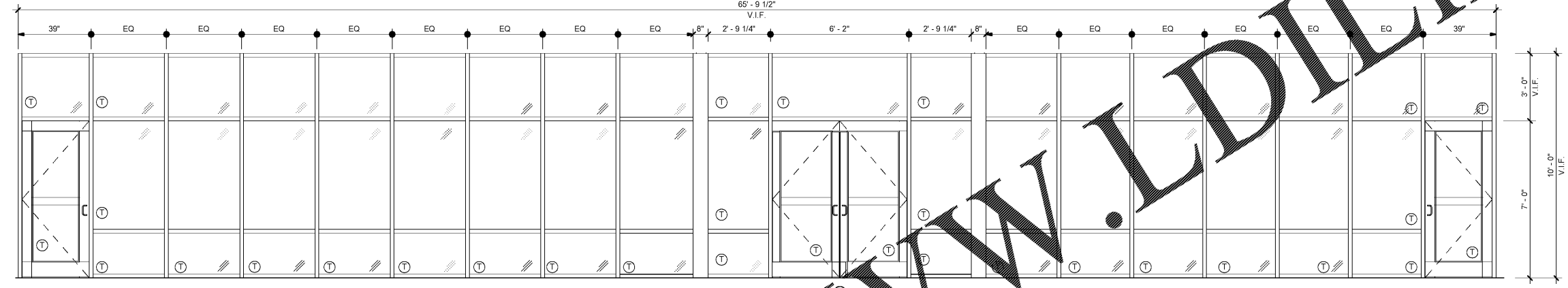


1 Door Elevations
A9.1 3/8" = 1'-0"

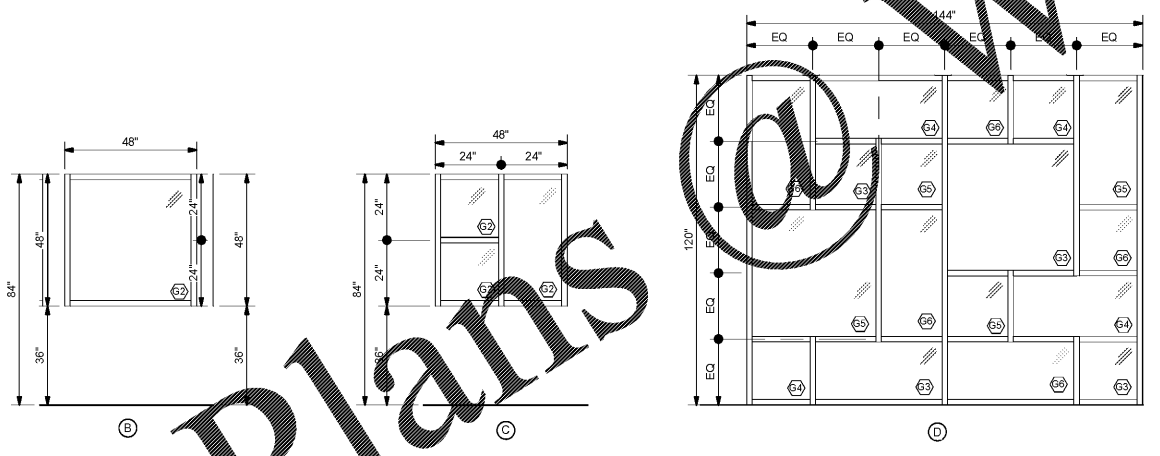
2 Door Frame Elevations
A9.1 3/8" = 1'-0"

Door Schedule											
Door No.	Door Width	Door Height	Door Thickness	Door Type	Door Mat.	Frame Type	Frame Mat.	Fire Rating	Glazing Type	Door Notes	
101A	6'-0"	7'-0"	0'-1.344"	A	ALUM.	A	ALUM.	-	G1	1,2,5,10	
101B	6'-0"	7'-0"	0'-1.344"	A	ALUM.	I	ALUM.	-	G2	2,9	
102A	3'-0"	7'-0"	0'-1.344"	A	ALUM.	A	ALUM.	-	G1	1,2,5,10,11	
102B	3'-0"	7'-0"	0'-1.344"	A	ALUM.	A	ALUM.	-	G1	1,2,5,10	
103	3'-0"	7'-0"	0'-1.344"	A	ALUM.	I	ALUM.	-	G1	1,2,5,10	
104	3'-0"	7'-0"	0'-1.344"	B	WD	I	HM	-	-	10,11	
106	3'-0"	7'-0"	0'-1.344"	B	WD	I	HM	-	-	10,11,12	
107	3'-0"	7'-0"	0'-1.344"	C	WD	I	HM	-	G2	10,11,12	
108	3'-0"	7'-0"	0'-1.344"	B	WD	I	HM	-	-	10,11,12	
109	3'-0"	7'-0"	0'-1.344"	B	WD	I	HM	-	-	10,11,12	
110	3'-0"	7'-0"	0'-1.344"	B	WD	I	HM	-	-	10,11,12	
111	3'-0"	7'-0"	0'-1.344"	B	WD	I	HM	-	-	10,11,12	
112A	3'-0"	7'-0"	0'-1.344"	B	WD	I	HM	-	-	10,11,12	
121	3'-0"	7'-0"	0'-1.344"	B	WD	I	HM	-	-	10,11,12	

Door Schedule Notes	
1. INSULATED GLAZING	7. ARMOR PLATE
2. CONTINUOUS HINGE	8. KICK PLATE
3. HIGH PROTECT DOOR	9. CLOSER WITH HOLD OPEN
4. SOUND SEALS	10. CLOSER
5. WEATHER SEAL	11. CARD READER
6. DRINKAGE	12. PAINT HOLLOW METAL FRAME PT-4



3 Exterior Storefront Elevations
A9.1 3/8" = 1'-0"



4 Interior Hollow Metal Frame Elevations
A9.1 3/8" = 1'-0"

Glazing Type Legend

G1 INSULATED GLAZING:
1" INSULATED HIGH PERFORMANCE TINTED FLOAT GLASS WITH ARGON GAS OR ARCHITECT APPROVED EQUAL BASIS OF DESIGN IS 1" PPG SOLARBAN 60 (2) SOLARGRAY + CLEAR
1. EXTERIOR LIGHT: 1/4" TINTED ANNEALED GLASS WITH LOW-E 366 COATING ON #2 SURFACE
2. 1/2" AIRSPACE WITH ARGON GAS
3. INTERIOR LIGHT: 1/4" CLEAR ANNEALED GLASS
- U-VALUE (SUMMER) = 0.27
- U-VALUE (WINTER) = 0.29
- SHGC = 0.24

G2 STANDARD INTERIOR GLAZING:
1/4" TEMPERED CLEAR GLASS

G3 STANDARD INTERIOR GLAZING:
1/4" TEMPERED CLEAR GLASS WITH FILM COLOR 'A'

G4 STANDARD INTERIOR GLAZING:
1/4" TEMPERED CLEAR GLASS WITH FILM COLOR 'B'

G5 STANDARD INTERIOR GLAZING:
1/4" TEMPERED CLEAR GLASS WITH FILM COLOR 'C'

G6 STANDARD INTERIOR GLAZING:
1/4" TEMPERED CLEAR GLASS WITH FILM COLOR 'D'

REFER TO SPECIFICATIONS FOR ARCHITECTURAL FILMS

Ⓣ = TEMPERED GLASS

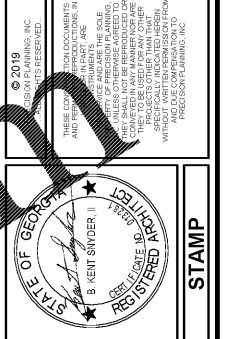
GLAZING NOTES:

1. EACH WINDOW AND DOOR LOCATED IN WALLS WHICH SEPARATE CONDITIONED AND UNCONDITIONED SPACE SHALL BE LABELED BY THE MANUFACTURER TO CERTIFY COMPLIANCE WITH THE REQUIREMENTS OF NATIONAL FENESTRATION RATING COUNCIL.

2. IN ACCORDANCE WITH TABLE 602.3 OF THE GEORGIA AMENDMENTS TO THE 2009 INTERNATIONAL ENERGY CONSERVATION CODE MAXIMUM ASSEMBLY U-FACTOR SHALL BE 0.65. MAXIMUM SHGC SHALL BE 0.25.

3. U-FACTOR, SHGC AND AIR LEAKAGE SHALL BE DETERMINED BY A LABORATORY ACCREDITED BY A NATIONALLY RECOGNIZED ACCREDITATION ORGANIZATION, SUCH AS THE NATIONAL FENESTRATION RATING COUNCIL, AND SHALL BE LABELED AND CERTIFIED BY THE MANUFACTURER.

4. INTERIOR GLASS PANELS ADJACENT TO A WALKING SURFACE SHALL BE INSTALLED TO ADEQUATELY RESIST A HORIZONTAL DESIGN FORCE OF 50 POUNDS PER LINEAR FOOT APPLIED TO EACH PANEL AT ANY POINT UP TO 42 INCHES ABOVE THE WALKING SURFACE.



PRECISION Planning Inc.
planners • engineers • architects • surveyors
400 Pike Boulevard,
Lawrenceville, GA 30046
770.338.6000 • www.ppi.us

**WINNETT COUNTY
VOTER REG. AND
ELEC. RENOVATION**
455 Grayson Hwy
Lawrenceville, GA 30046

Date	Description	DESIGN		DRAWN		CHECKED		BKS	
		PPI	MEF	PPI	MEF	PPI	MEF	PPI	MEF
02-13-19	RELEASED FOR BID								

02-13-19 DATE
A16-137AGSB PROJ. NUMBER
XXX.rvt FILE NAME
FILE NUMBER

A9.1

Order Plans