

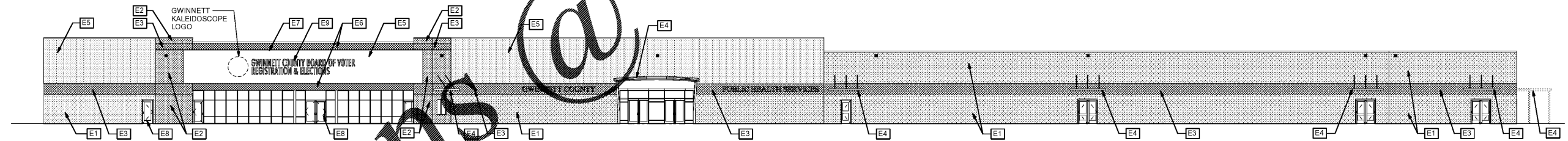
1 Demolition Plan South Elevation
 A5.1 1/16" = 1'-0"

Exterior Demolition Keynotes

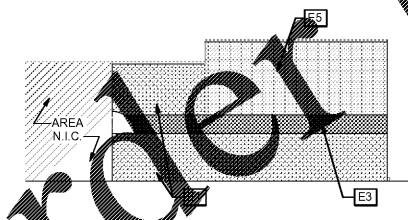
- D1 REMOVE AND DISPOSE OF EXTERIOR SIGNAGE. PATCH AND REPAIR EXISTING STUCCO PRIOR TO INSTALLING NEW STUCCO FINISH.
- D2 CLEAN EXISTING STUCCO FINISH. REMOVE ALL DEBRIS/LOOSE STUCCO. PATCH ALL DAMAGED AREAS AND PREPARE SURFACE TO RECEIVE NEW STUCCO FINISH.
- D3 PRESSURE WASH EXISTING MASONRY. REMOVE ALL DEBRIS/LOOSE PAINT AND PREPARE WALL TO RECEIVE NEW BLOCK FILLER AND PAINT FINISH.
- D4 EXISTING METAL COPING - REMOVE RUST, CLEAN AND PREPARE FOR NEW PAINT.
- D5 EXISTING WALL PACK LIGHT FIXTURE TO REMAIN.
- D6 EXISTING ALUMINUM STOREFRONT ENTRY SYSTEM TO BE REMOVED AND DISPOSED OF.
- D7 EXISTING ALUMINUM STOREFRONT ENTRY SYSTEM TO REMAIN.
- D8 EXISTING METAL CANOPY TO REMAIN. PREPARE ALL METAL SURFACES FOR NEW PAINT.
- D9 EXISTING SIGNAGE TO REMAIN.
- D10 EXISTING METAL COPING TO BE REMOVED.

Exterior Elevation Keynotes

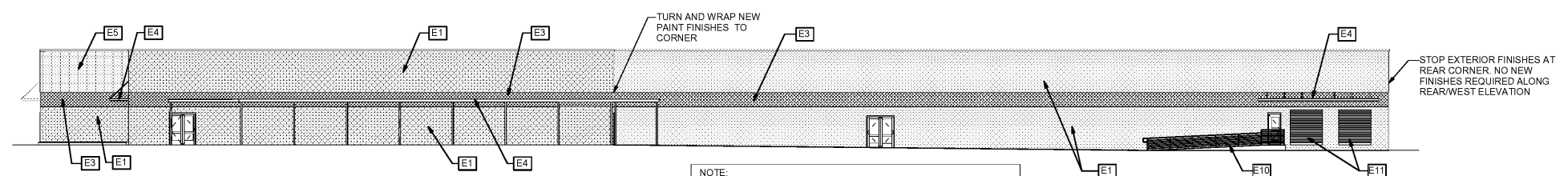
- E1 PAINT EXTERIOR MASONRY EPT-1.
- E2 PAINT EXTERIOR MASONRY EPT-2.
- E3 PAINT EXTERIOR MASONRY EPT-3.
- E4 PAINT EXISTING METAL CANOPY, POSTS AND SUPPORT RODS EPT-4.
- E5 NEW STUCCO FINISH FIELD COLOR TO MATCH EPT-1. REFER TO SPECIFICATIONS.
- E6 NEW STUCCO FINISH ACCENT COLOR TO MATCH EPT-3.
- E7 METAL COPING PAINT TO MATCH STUCCO FINISH.
- E8 NEW ALUMINUM STOREFRONT ENTRY SYSTEM. REFER TO A9.1 AND SPECIFICATIONS.
- E9 NEW EXTERIOR SIGNAGE - REFER TO A10.1.
- E10 PAINT EXISTING RAILING EPT-4.
- E11 EXISTING OVERHEAD DOORS SHALL REMAIN.



2 New East Elevation
 A5.1 1/16" = 1'-0"

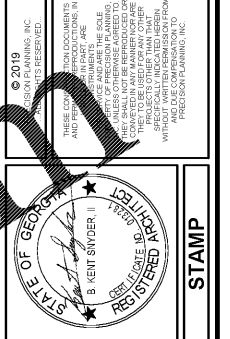


3 New South Elevation
 A5.1 1/16" = 1'-0"



4 New North Elevation
 A5.1 1/16" = 1'-0"

NOTE: THERE IS AN EXTENSIVE AMOUNT OF HVAC EQUIPMENT, FENCING, AND ELECTRICAL EQUIPMENT ALONG THIS ELEVATION. GENERAL CONTRACTOR SHALL INCLUDE ALL NECESSARY MEANS TO CUT IN NEW PAINT FINISH FOR EXTERIOR WALLS AROUND ALL EQUIPMENT AND PENETRATIONS IN THE BID PRICE.



PRECISION
 Planning Inc.
 planners • engineers • architects • surveyors
 400 Pike Boulevard,
 Lawrenceville, GA 30046
 770.338.8000 • www.ppi.us

**GWINNETT COUNTY
 VOTER REG. AND
 ELEC. RENOVATION**
 455 Grayson Hwy
 Lawrenceville, GA 30046

DATE	DESCRIPTION	BY	CHECKED
02-13-19	RELEASED FOR BID		

02-13-19	A16-137AGSB	XXX.rvt	
	PROJ. NUMBER	FILE NAME	FILE NUMBER

A5.1

Order Plans @ www.LDILine.com