



REVISIONS

- 02/5/2018: HEALTH DEPARTMENT NOTES
- 02/6/2018: LANDLORD NOTES
- 02/23/2018: SAP
- 09/21/2018: CITY COMMENTS
- 11/07/2018: CITY COMMENTS

RELEASED FOR CONSTRUCTION

PROJECT NAME AND ADDRESS  
**INTERIOR RENOVATION PLAN FOR  
 WOODY'S CHEESE STEAKS**  
 45 IRBY AVE.  
 ATLANTA, GA. 30305

DATE  
 01/29/18

SHEET TITLE  
**WATER PLAN**  
 SHEET NUMBER  
**P-1**

**PLUMBING LEGEND**

SYMBOLS & ABBR.	LEGEND
SAN	SOIL OR WASTE PIPING ABOVE FLOOR
	SOIL OR WASTE PIPING BELOW FLOOR
	VENT PIPING
ST	STORM SEWER PIPING
RL	RAIN LEADER
G	GAS PIPING
F	FIRE LINE OR STANDPIPE
SP	SPRINKLER LINE
A	AIR PIPING
C.W.	COLD WATER SUPPLY
H.W.	HOT WATER SUPPLY
H.W.R.	HOT WATER RECIRCULATING LINE
○	PIPE RISING - PIPE TURNING DOWN
B.V.	BALL VALVE
G.V.	GATE VALVE
C.V.	CHECK VALVE
PRV	PRESSURE REDUCING VALVE
U	UNION
SA	SHOCK ABSORBER
N.F.W.H.	NON-FREEZE WALL HYDRANT
H.B.	HOSE BIBB
CO	FLOOR CLEANOUT
F.D.	FLOOR DRAIN
B.F.	BELOW FLOOR
A.C.	ABOVE CEILING
VTR	VENT THRU ROOF
AFF	ABOVE FINISHED FLOOR
INV	INVERT
FW	FILTERED WATER
TW	TEMPERED WATER

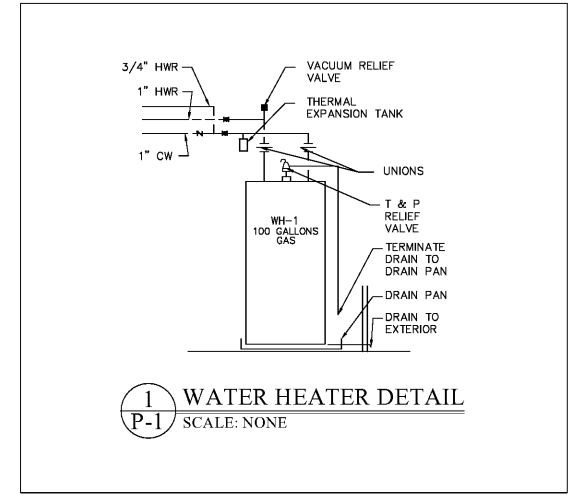
**PLUMBING FIXTURE & CONNECTION SCHEDULE**

FIXTURE	NAME / TYPE	ACCESSORIES (REMARKS)	FLOW RATE (GPM)	CONNECTION				
				TRAP	WASTE	VENT	H.W.	C.W.
①	WATER CLOSET (A.D.A.)	17"H FLOOR MOUNTED A.D.A. COMPLIANT	1.28 GALLONS PER FLUSHING CYCLE	-	4"	3"	-	3/4"
②	LAVATORY (ADA)	CABINET MOUNTED	0.5 GPM AT 60 PSI	1-1/4"	1-1/4"	1-1/4"	1/2"	1/2"
③	MOP SINK	FLOOR MOUNTED	2.0 GPM AT 60 PSI	3"	3"	2"	1/2"	1"
④	HAND SINK	COUNTER MOUNTED	0.5 GPM AT 60 PSI	1-1/2"	1-1/2"	1-1/2"	1/2"	1/2"
⑤	1-COMPARTMENT SINK	FLOOR MOUNTED	2.0 GPM AT 60 PSI	2"	2"	2"	1/2"	1/2"
⑥	1-COMPARTMENT SINK	FLOOR MOUNTED	2.0 GPM AT 60 PSI	2"	2"	2"	1/2"	1/2"
⑦	3-COMPARTMENT SINK	FLOOR MOUNTED	2.0 GPM AT 60 PSI	3"	3"	2"	1/2"	1/2"
⑧	ICE MACHINE	BY OTHERS	0.5 GPM AT 60 PSI	3"	3"	2"	-	1/2"
⑨	COKE DISPENSER	BY OTHERS	GPM AT 60 PSI	2"	2"	2"	-	1/2"
⑩	TEA DISPENSER	BY OTHERS	0.5 GPM AT 60 PSI	2"	2"	2"	-	1/2"
⑪	DIPPING WELL	BY OTHERS	0.5 GPM AT 60 PSI	2"	2"	2"	-	1/2"
FD-1	FLOOR DRAIN J.R. SMITH 2010-P050	PROVIDE WITH TRAP PRIMER		3"	3"	-	-	-
FS-1	J.R. SMITH MODEL 3111Y-1	FLOOR SINK (12"x12" W/SEDIMENT BUCKET & 1/2" GRATE)		3"	3"	-	-	-
HD	J.R. SMITH			3"	3"	-	-	-

PROVIDE MIXING VALVES FOR HAND WASHING SINKS AND LAVATORIES TO CONTROL THE MIXED WATER TEMP 110° F OR LESS PER CODE. THE VALVES SHALL COMPLY WITH ASSE1070.

**WATER HEATER SCHEDULE**

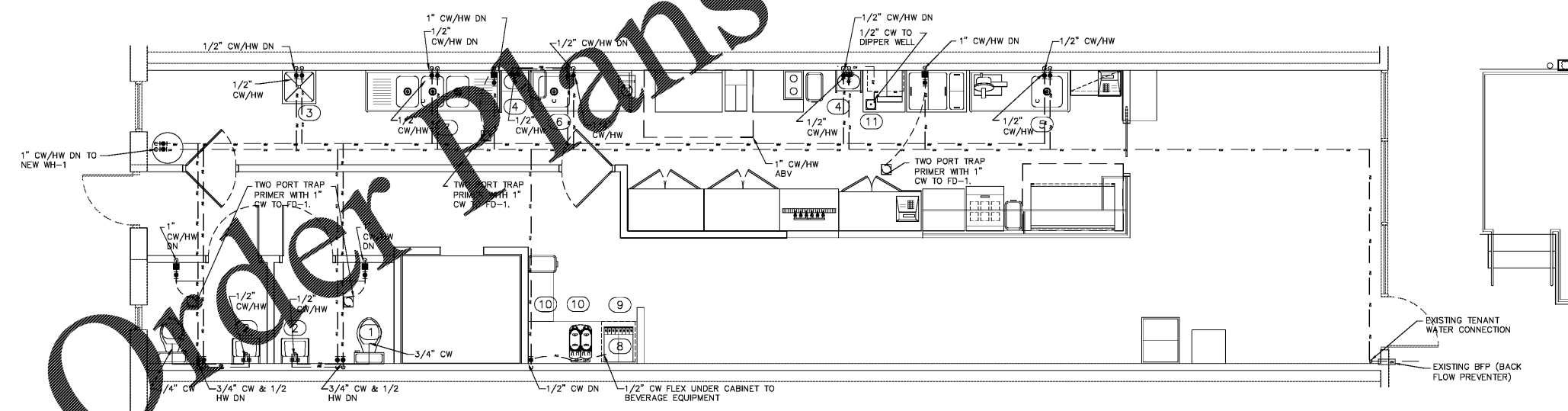
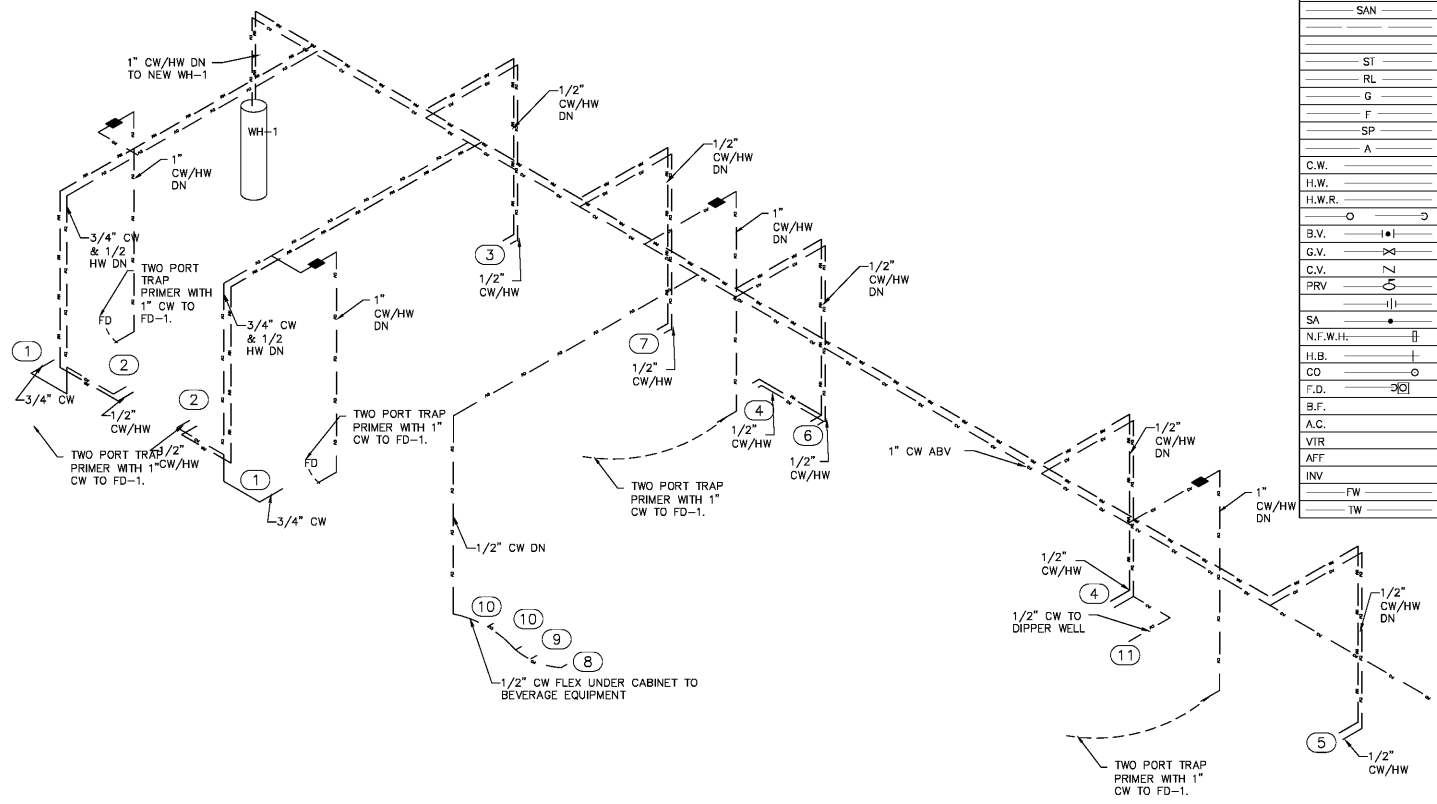
FIXTURE	NAME / TYPE	ACCESSORIES (REMARKS)	CONNECTION				
			TRAP	WASTE	VENT	H.W.	C.W.
WH-1	GAS WATER HEATER AMERICAN STANDARD 100 GALLON, D-100-199-AS	REC GPH @ 100 DEGREE RISE: 194 GALLON	-	-	-	1"	1"



HOT WATER DEMAND: RECOVERY GALLONS

SINK TYPE	QTY	GPH/SINK	GPH
LAVATORY	5	5	10
HAND SINKS	2	5	10
1-COMP SINK	2	10	20
3-COMP SINK	1	79	79
MOP SINK	1	10	10
<b>SUBTOTAL</b>			<b>129</b>

PROVIDED WATER HEATER RECOVERY RATE @ 100° RISE: 194 GPH



**WATER PLAN**  
 SCALE: 1/4"=1'-0"

WWW.IDIline.com

Order Plans