

KEY PLAN

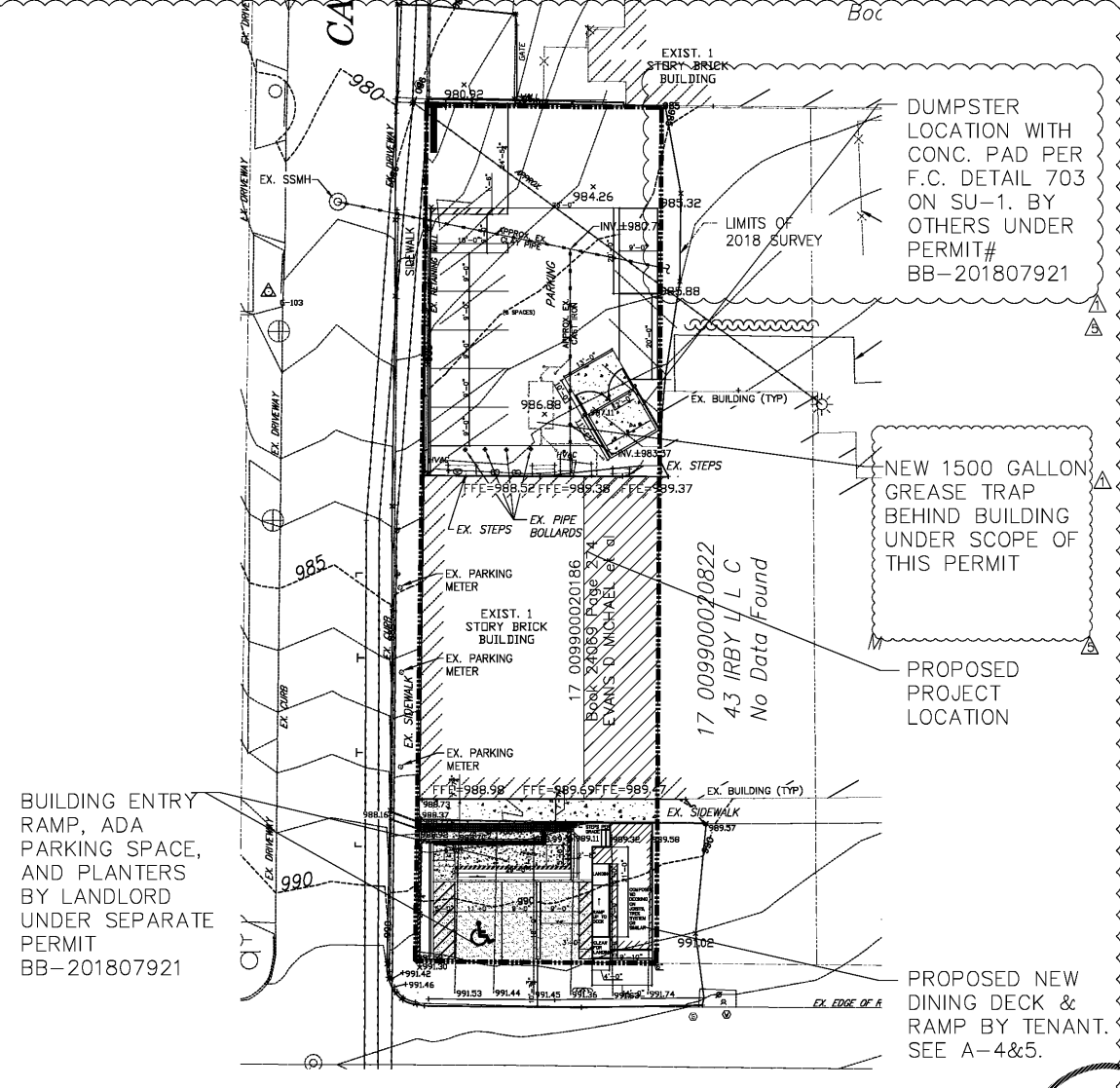


Table: NUMBER OF REQUIRED PLUMBING FIXTURES (RESTAURANT) with columns for fixture type, occupant load, required fixture ratio, and number of fixtures.

Table: EQUIPMENT SCHEDULE with columns for item number, item name, model, and remarks.

PROJECT DATA

CONVERSION FROM MERCANTILE TO ASSEMBLY A-2
SQUARE FOOTAGE: 1340 SF TOTAL (EXISTING INTERIOR)
310 SF NEW PATIO DINING AREA PLUS 100 SF NEW PATIO RAMP & LANDING
OCCUPANCY CLASSIFICATION: ASSEMBLY (A-2)

APPLICABLE CODES

- List of applicable codes including International Building Code (ICC), International Mechanical Code (IMC), International Fire Code (IFC), and various Georgia state amendments.

CONSTRUCTION CLASSIFICATION: TYPE II-B, UNPROTECTED, NON-SPRINKLERED

OCCUPANCY LOAD CALCULATION: PER NFPA 101, SECTION 7.3.1.2: DINING: 400 / 15 = 26.7

GENERAL NOTES

- Notes regarding door hardware, fire extinguishers, panic hardware, and other building details.

SCOPE OF WORK

(CONVERT) AN EXISTING RETAIL STORE TO A NEW SANDWICH RESTAURANT. DEMO EXISTING RESTROOM, FIXTURES, PARTITION AND DOORS AS SHOWN.

Table: LEGEND with symbols for walls, signs, extinguishers, lighting, and other features.

ADDITIONAL AREAS WITHOUT OCCUPANCY LOAD RATES IN NFPA 101

(RESTROOM: 90) (WALK-IN COOLER: 112) (WALL AREAS: 117) TOTAL INTERIOR SF: 1340

NUMBER OF INTERIOR SEATS: 28+3+7 = 38
NUMBER OF PATIO SEATS: 28 + 6 = 34

NUMBER OF EXITS: REQUIRED: 2 PROVIDED: 2

EGRESS CALCULATION: REQUIRED 66 X 0.2" = 13.2" PROVIDED 3'x3' = 6'-0"

NUMBER OF STORIES IN BLDG: 1 FLOOR LEVEL: 1

THIS ESTABLISHMENT WILL SERVE ALCOHOL THIS ESTABLISHMENT WILL SERVE FREE WATER TO ITS CUSTOMERS.

FIRM NAME AND ADDRESS: NEW SPACE DESIGN, INC. 3331 NORTH BERKEY LANE ROAD SUITE 200, DULUTH, GA 30096

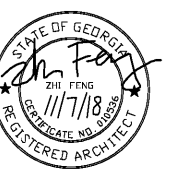


Table: REVISIONS with columns for revision number, date, and description.

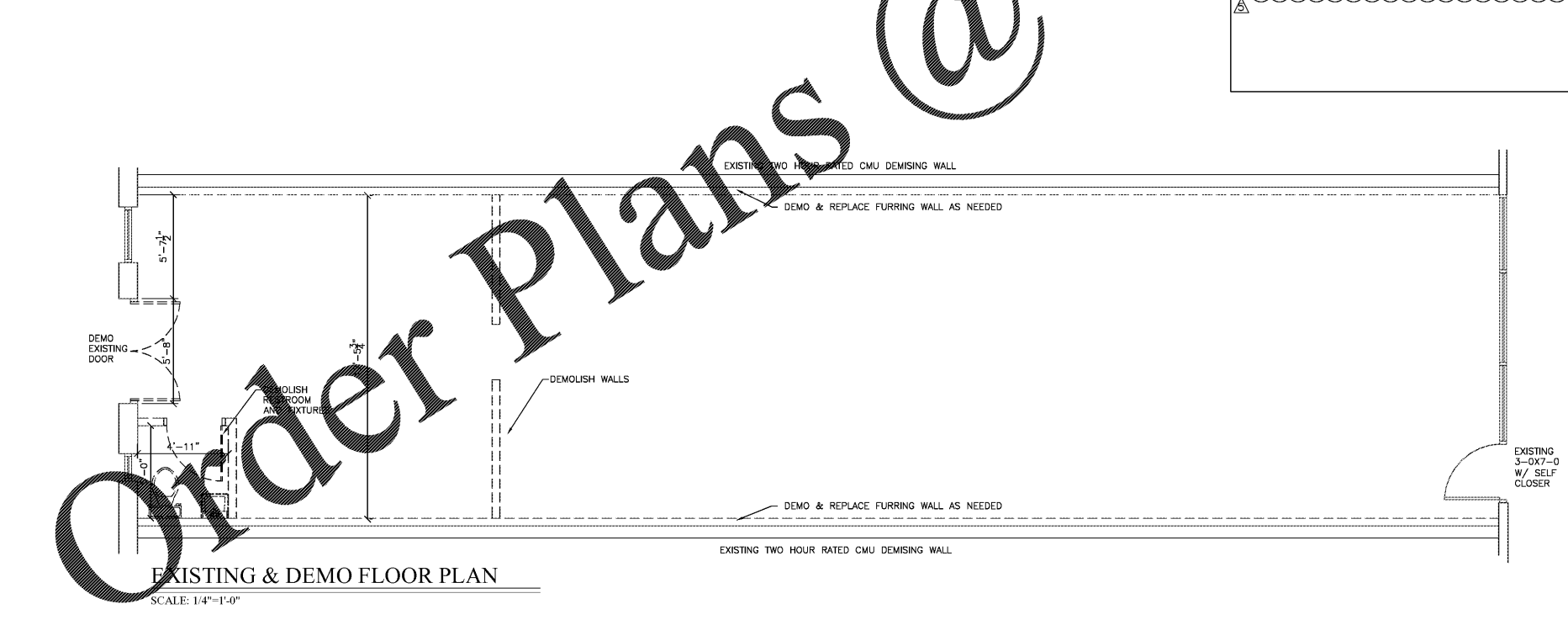
RELEASED FOR CONSTRUCTION

INTERIOR RENOVATION PLAN FOR WOODY'S CHEESE STEAKS
PROJECT NAME AND ADDRESS: 45 IRBY AVE. ATLANTA, GA. 30305

DATE: 01/29/18

Table: FURNISHINGS REQUIREMENTS: LSC with columns for type, minimum length/width, and minimum depth.

SHEET NUMBER: A-1



DRAWING INDEX

Table: DRAWING INDEX listing drawing titles and their corresponding sheet numbers.

HEALTH DEPARTMENT:

THE LIGHTING FIXTURES LOCATED OVER, BY, OR WITHIN FOOD AND BEVERAGE STORAGE, PREPARATION, DISPLAY, AND SERVICE AREAS SHALL BE SHIELDED TO PROTECT AGAINST BROKEN GLASS FALLING INTO FOOD OR BEVERAGES.

FURNISHINGS REQUIREMENTS: ALL INTERIOR FINISHES SHALL COMPLY WITH LSC 10.2

INTERIOR WALL & CEILING FINISH CLASS FOR ASSEMBLY (2012 NFPA 101)

Table: INTERIOR WALL & CEILING FINISH CLASS showing requirements for exit enclosures and interior finish class.

INTERIOR FLOOR FINISH CLASS CLASS I OR II IN EXIT CORRIDORS.

FURNISHINGS REQUIREMENTS: LSC FURNISHINGS, DECORATIONS AND SCENERY

- List of requirements for draperies, curtains, and other interior finishes, including flame propagation performance criteria.

