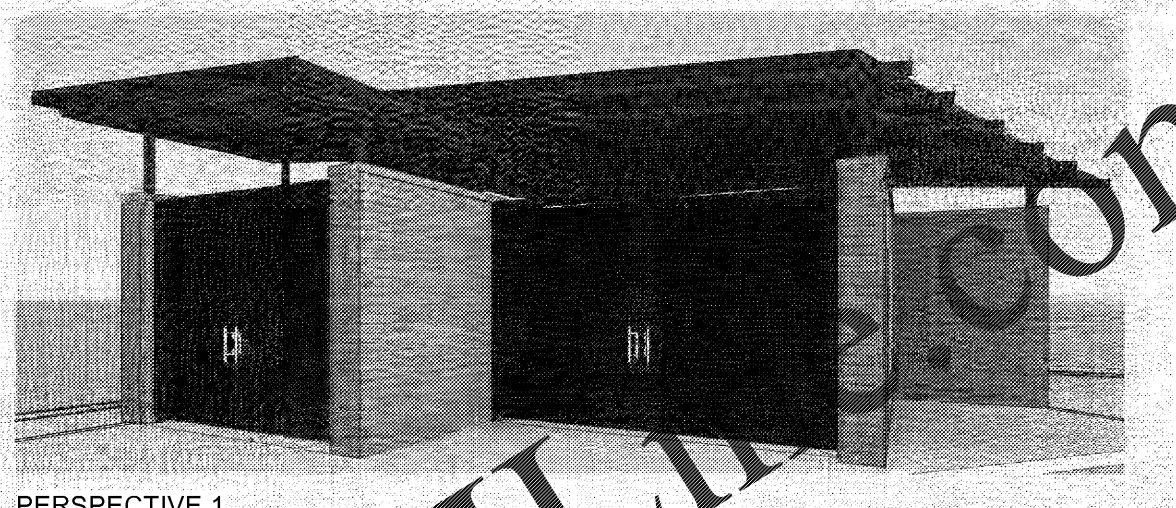


**BUILDING CODE AND LIFE SAFETY ANALYSIS**

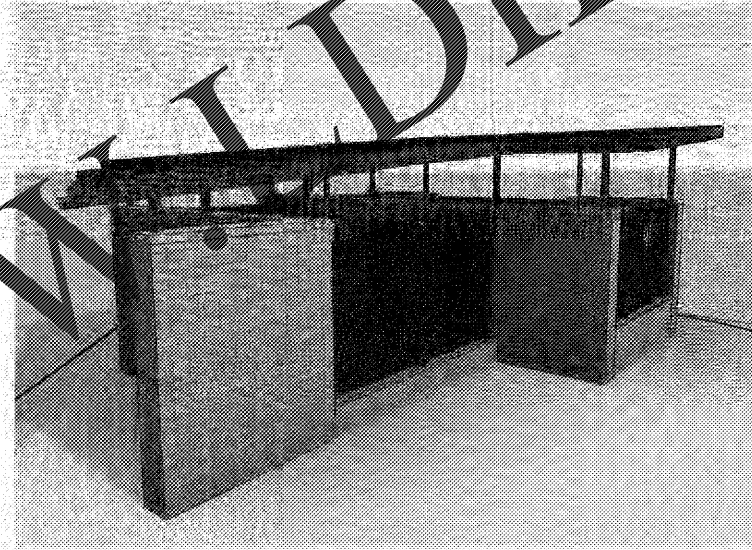
**APPLICABLE BUILDING CODES**

<b>SUMMARY</b>		
"U" GROUP USE OCCUPANCY - UNOCCUPIED MISCELLANEOUS STRUCTURE	(IBC 312.1)	
SPECIAL REQUIREMENTS BASED ON OCCUPANCY	N/A	(IBC CH. 4)
<b>GENERAL BUILDING LIMITATIONS</b>		
AREAS BASED ON USE GROUP "X"		
NUMBER OF STORIES PERMITTED	2 STORIES	(IBC TABLE 503)
STORY INCREASE FOR FULLY SPRINKLED PLANNED BUILDING STORIES	N/A	(IBC 506)
1 STORY		
TOTAL AREA PERMITTED	8,500 SF	(IBC TABLE 503)
AREA INCREASE FOR FULLY SPRINKLED PLANNED BUILDING AREA	N/A	(IBC 506)
915 SF		
BUILDING HEIGHT PERMITTED	55 FT	(IBC TABLE 503)
HEIGHT INCREASE FOR FULLY SPRINKLED PLANNED BUILDING HEIGHT	N/A	(IBC 506)
15'-10" FT		
SEPARATION OF OCCUPANCIES	N/A	(IBC TABLE 508.4)
INCIDENTAL USE	N/A	(IBC 509)
<b>TYPE OF CONSTRUCTION</b>		
TYPE "IIB" NON-COMBUSTIBLE		(IBC 601)
<b>FIRE-RESISTANT CONSTRUCTION</b>		
BUILDING ELEMENTS - FIRE-RESISTANCE RATING		(IBC TABLE 601)
PRIMARY STRUCTURAL FRAMING	0 HR	
BEARING WALLS - EXTERIOR	0 HR	
BEARING WALLS - INTERIOR	0 HR	
NON-BEARING WALLS AND PARTITIONS - INTERIOR	0 HR	
FLOOR CONSTRUCTION AND ASS. SECONDARY	0 HR	
ROOF CONSTRUCTION AND ASS. SECONDARY	0 HR	
FIRE SEPARATION DISTANCE	X > 30 FT	(IBC TABLE 602)
MAX AREA OF EXTERIOR OPENINGS	NOT REQUIRED	(IBC TABLE 705.8)
FIRE WALLS	N/A	(IBC TABLE 706.4)
FIRE BARRIERS	N/A	(IBC TABLE 707.3.10)
FIRE PARTITIONS	N/A	(IBC 708)
SMOKE BARRIERS	N/A	(IBC 709)
SMOKE PARTITIONS	N/A	(IBC 710)
SHAFT ENCLOSURES	N/A	(IBC 713.4)
INTERIOR WALL & CEILING FINISHES - EXITS & STAIRWAYS	NO RESTRICTIONS	(IBC TABLE 803.9)
INTERIOR WALL & CEILING FINISHES - CORRIDORS	NO RESTRICTIONS	(IBC TABLE 803.13)
INTERIOR WALL & CEILING FINISHES - ROOMS	NO RESTRICTIONS	(IBC TABLE 803.13)
FLOOR FINISHES	N/A	(IBC 804)
<b>FIRE PROTECTION SYSTEMS</b>		
AUTOMATIC SPRINKLER SYSTEM	N/A	(IBC 903.2)
STANDPIPE SYSTEM	N/A	(IBC 905.3, NFPA 14)
FIRE EXTINGUISHERS	N/A	(IBC 906.3, NFPA 10)
FIRE ALARM & DETECTION SYSTEM	UNOCCUPIED	(IBC 907.2.2, NFPA 101)
<b>MEANS OF EGRESS / EXITS</b>		
REQUIRED EXIT WIDTH / OCCUPANTS - STAIRS (#OCC. X .3 INCHES)	N/A	(IBC 1005)
REQUIRED EXIT WIDTH / OCCUPANTS - DOORS, OTHER (#OCC. X .2 INCHES)	N/A	(IBC 1005)
ACCESSIBLE MEANS OF EGRESS	N/A	(IBC 1007)
MAX. COMMON PATH OF EGRESS	100 FEET	(IBC TABLE 1014.3)
MAX. EXIT ACCESS TRAVEL DISTANCE	200 FEET	(IBC TABLE 1017.2)
CORRIDOR FIRE-RESISTANCE RATING	N/A	(IBC TABLE 1018.1)
MIN. CORRIDOR WIDTH	N/A	(IBC TABLE 1020.2)
MAX. CORRIDOR DEAD END	N/A	(IBC 1020.4)
EXITS	0 REQUIRED / 0 PROVIDED	(IBC TABLE 1006.2.1)
<b>PLUMBING FIXTURES</b>		
WATER CLOSETS	0 REQUIRED / 0 PROVIDED	(IBC TABLE 2902.1)
LAVATORIES	0 REQUIRED / 0 PROVIDED	(IBC TABLE 2902.1)
DRINKING FOUNTAINS	0 REQUIRED / 0 PROVIDED	(IBC TABLE 2902.1)
MOP BASIN	0 REQUIRED / 0 PROVIDED	(IBC TABLE 2902.1)

2012 INTERNATIONAL BUILDING CODE (IBC)
2012 INTERNATIONAL FIRE CODE (IFC)
NFPA 70 (2011) NATIONAL ELECTRICAL CODE
NFPA 72 NATIONAL FIRE ALARM & SIGNALING CODE
NFPA 80 STANDARD FOR FIRE DOORS & OTHER OPENING PROTECTIVES
2014 NFPA 101 SAFETY CODE
29 CFR (OSHA)
2010 ADA STANDARDS / ICC A117.1
ANSI/ASHRAE/IESNA STANDARDS 90.1 - 2007 ENERGY STANDARD
ANSI A17.1 - 1993
2012 INTERNATIONAL MECHANICAL CODE (IMC)
2012 INTERNATIONAL PLUMBING CODE (IPC)



**PERSPECTIVE 1**  
SCALE:



**PERSPECTIVE 2**  
SCALE:



**PERSPECTIVE 3**  
SCALE:

**TETRA TECH**  
www.tetra.tech.com  
1899 Powers Ferry Road SE, Suite 400  
Atlanta, Georgia  
TEL: 770.850.0949 FAX: 770.850.0950

ISSUED FOR BID

MARK	DATE	DESCRIPTION
1	02/11/19	ISSUED FOR BID

CITY OF ALPHARETTA  
 OLD ROSWELL STREET  
 PARKING LOT MODIFICATIONS  
**ARCHITECTURAL CODE  
 REVIEW AND  
 PERSPECTIVES**

PROJ: 200-01297-19012  
 DESN: JAH  
 DRWN: TMH  
 CHKD: JQB

**A-002**

2/11/2019 12:12:41 PM C:\Users\jason.hunsucker\Documents\A-Alpha\Alpha\Enclosure-Option 1\_2019\_jason.hunsucker.rvt

Order Plans

WWW.IDILLIUM.COM