

2/11/2019 1:57:46 PM - O:\PROJECTS\ATLANTA\ER01297200-01297-190120\DSH\ER01297200-01297-190120\DSH\ER01297200-01297-190120\EROSION CONTROL DETAILS DWG - GULMIRE, CALEB

EROSION CONTROL ACTIVITIES

Table with columns for activity codes (Ds1, Ds2, Ds3), descriptions, and symbols for various erosion control methods like straw, mulch, and fabric.

FDR TEMPORARY PROTECTION OF CRITICAL AREAS WITHOUT SEEDING. THIS STANDARD APPLIES TO GRADES OR CLEARED AREAS WHICH MAY BE SUBJECT TO EROSION FOR 6 MONTHS OR LESS...

MATERIALS INSTALLATION DRY STRAW OR HAY DEPTH OF 2 TO 4 INCHES PROVIDING COMPLETE SOIL COVERAGE...

WOOD WASTE (CHIPS SAWDUST OR BARK) DEPTH OF 2 TO 3 INCHES

EROSION CONTROL MATTING OR NETTING APPLY IN ACCORDANCE WITH MANUFACTURERS RECOMMENDATIONS

CUTBACK ASPHALT (SLOW CURING) 1200 GALLONS PER ACRE, OR 1/4 GALLON PER SQUARE YARD

POLYETHYLENE FILM SECURED OVER BANKS OR STOCKPILED SOIL MATERIAL FOR TEMPORARY PROTECTION

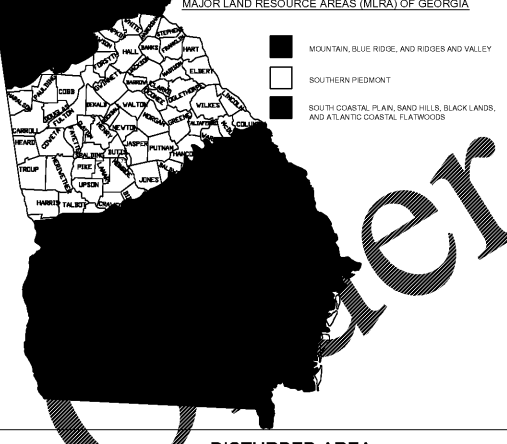
DISTURBED AREA STABILIZATION (WITH MULCHING ONLY)

Ds1 2014 MANUAL FOR EROSION AND SEDIMENT CONTROL (GREEN BOOK)

PLANTS, PLANTING RATES, AND PLANTING DATES FOR TEMPORARY COVER OR COMPANION CROPS 1/

Large table with columns for species, broadcast rates, resource area, and planting dates (A through S) for various plants like barley, lespedeza, millet, etc.

1/ TEMPORARY COVER CROPS ARE VERY COMPETITIVE AND WILL CHOP OUT PERENNIALS IF SEEDS TOO HEAVILY. 2/ REDUCE SEEDING RATES BY 50% WHEN DRILLED...



Ds2 DISTURBED AREA STABILIZATION (TMP. SEEDING) 2014 MANUAL FOR EROSION AND SEDIMENT CONTROL (GREEN BOOK) Figure 6-27.2

Table with columns: TYPE OF SPECIES, YEAR, ANALYSIS OR EQUIVALENT N-P-K, RATE, N TOP DRESSING RATE. Lists various grasses and ground covers with their respective rates.

1/ Apply in spring following seedling. 2/ Apply in spot applications when high rates are used. 3/ Apply in 3 spot applications. 4/ Apply when plants are pruned...

FERTILIZER AND MULCHING REQUIREMENTS

Table with columns: SPECIES, BROADCAST RATES, RESOURCE AREA, PLANTING DATES, REMARKS. Lists species like Bahia, Paspalum, and their broadcast rates.

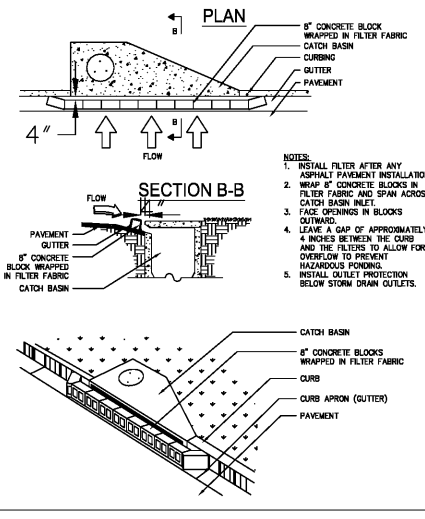
Table with columns: SPECIES, BROADCAST RATES, RESOURCE AREA, PLANTING DATES, REMARKS. Lists species like Bahia, Paspalum, and their broadcast rates.

1/ TEMPORARY COVER CROPS ARE VERY COMPETITIVE AND WILL CHOP OUT PERENNIALS IF SEEDS TOO HEAVILY. 2/ REDUCE SEEDING RATES BY 50% WHEN DRILLED...

Table with columns: SPECIES, BROADCAST RATES, RESOURCE AREA, PLANTING DATES, REMARKS. Lists species like Bahia, Paspalum, and their broadcast rates.

Ds3 DISTURBED AREA STABILIZATION (PERMANENT VEGETATION) 2014 MANUAL FOR EROSION AND SEDIMENT CONTROL (GREEN BOOK) Figure 6-27.3

CURB INLET FILTER "PIGS IN BLANKET"



Sd2-P CURB INLET PROTECTION 2014 MANUAL FOR EROSION AND SEDIMENT CONTROL (GREEN BOOK) Figure 6-28.6

EROSION CONTROL NOTES:

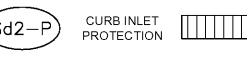
- 1. EROSION CONTROL PRACTICES MUST COMPLY WITH THE MINIMUM BEST MANAGEMENT PRACTICES FOR EROSION CONTROL AND SHALL COMPLY WITH THE STANDARDS AND SPECIFICATIONS IN THE "MANUAL FOR EROSION CONTROL AND SEDIMENT CONTROL IN GEORGIA".
- 2. EROSION AND SEDIMENT CONTROL DEVICES MUST BE INSTALLED AND INSPECTED PRIOR TO ANY GRADING ON SITE.
- 3. DISTURBED AREAS LEFT IDLE FOR FIVE DAYS, AND NOT TO FINAL GRADE, WILL BE ESTABLISHED WITH TEMPORARY MULCH (DS1) OR VEGETATION (DS2)...

EROSION CONTROL CHECKLIST CERTIFICATIONS:

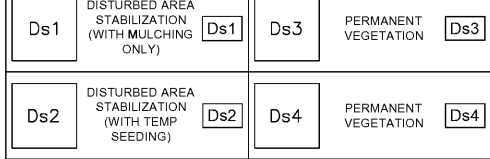
- 1. NON-EXEMPT ACTIVITIES SHALL NOT BE CONDUCTED WITHIN THE 25 OR 50-FOOT UNDISTURBED STREAM BUFFER AS MEASURED FROM THE POINT OF WRESTED VEGETATION WITHOUT FIRST ACQUIRING THE NECESSARY VARIANCES AND PERMITS.
- 2. THE SHAPE OF SEDIMENT FROM THE SITE SHALL BE PREVENTED BY THE INSTALLATION OF EROSION AND SEDIMENT CONTROL MEASURES AND PRACTICES PRIOR TO LAND DISTURBING ACTIVITIES.

I CERTIFY UNDER PENALTY OF LAW THAT THIS PLAN WAS PREPARED AFTER A SITE VISIT TO THE LOCATIONS DESCRIBED HEREIN BY MYSELF OR MY AUTHORIZED AGENT, UNDER MY SUPERVISION.

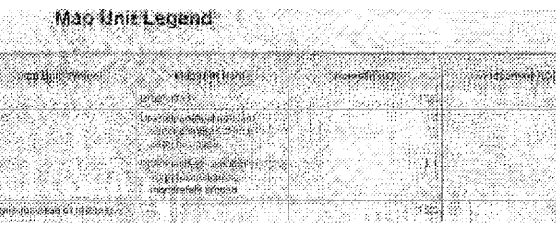
STRUCTURAL PRACTICES



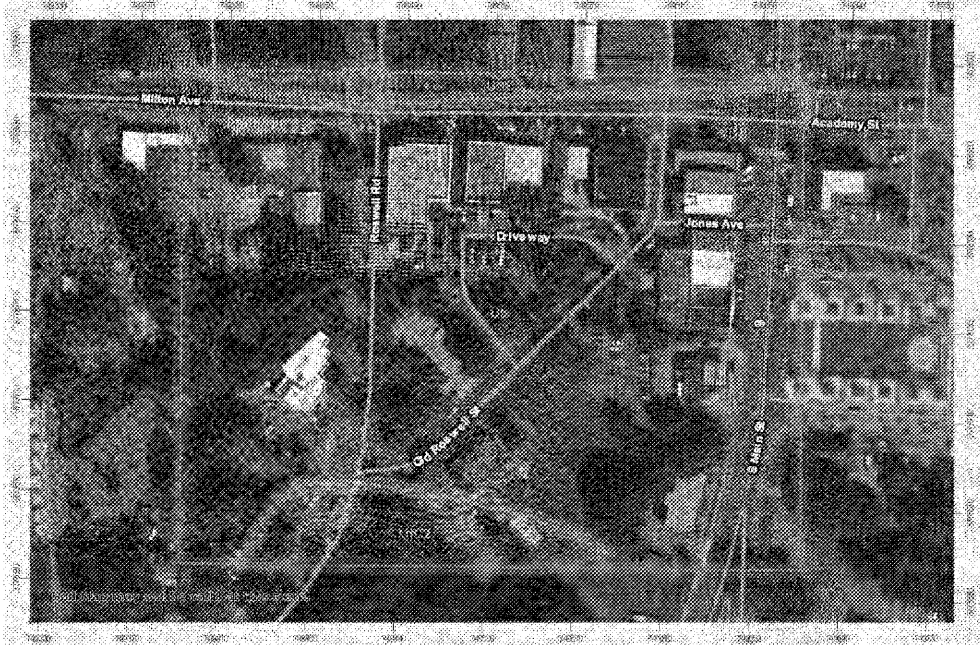
VEGETATIVE PRACTICES



CONSTRUCTION SEQUENCE table with columns for months (1, 2, 3) and rows for activities like installation of sediment control measures, demolition, clearing, building construction, paving, grassing, etc.



NOTE: ENTIRE PROJECT AREA HAS UB TYPE SOIL



SOIL MAP AND LEGEND N.T.S.

TETRA TECH logo and contact information: www.tetra.tech.com, 1859 POWERS FERRY RD SE, SUITE 400, ATLANTA, GA 30339, TEL: (770) 850-0949 FAX: (770) 850-0950

Professional Engineer Seal for GSWCC Level 11111, CERT. # 0000060744

Table with columns: MARK, DATE, DESCRIPTION, BY, CG, MS. Shows revision history for the drawing.

CITY OF ALPHARETTA OLD ROSWELL ST PARKING LOT IMPROVEMENTS PROJECT EROSION CONTROL DETAILS

PROJ: 200-01297-19012 DESN: CG DRWN: HA CHKD: DL

C-503