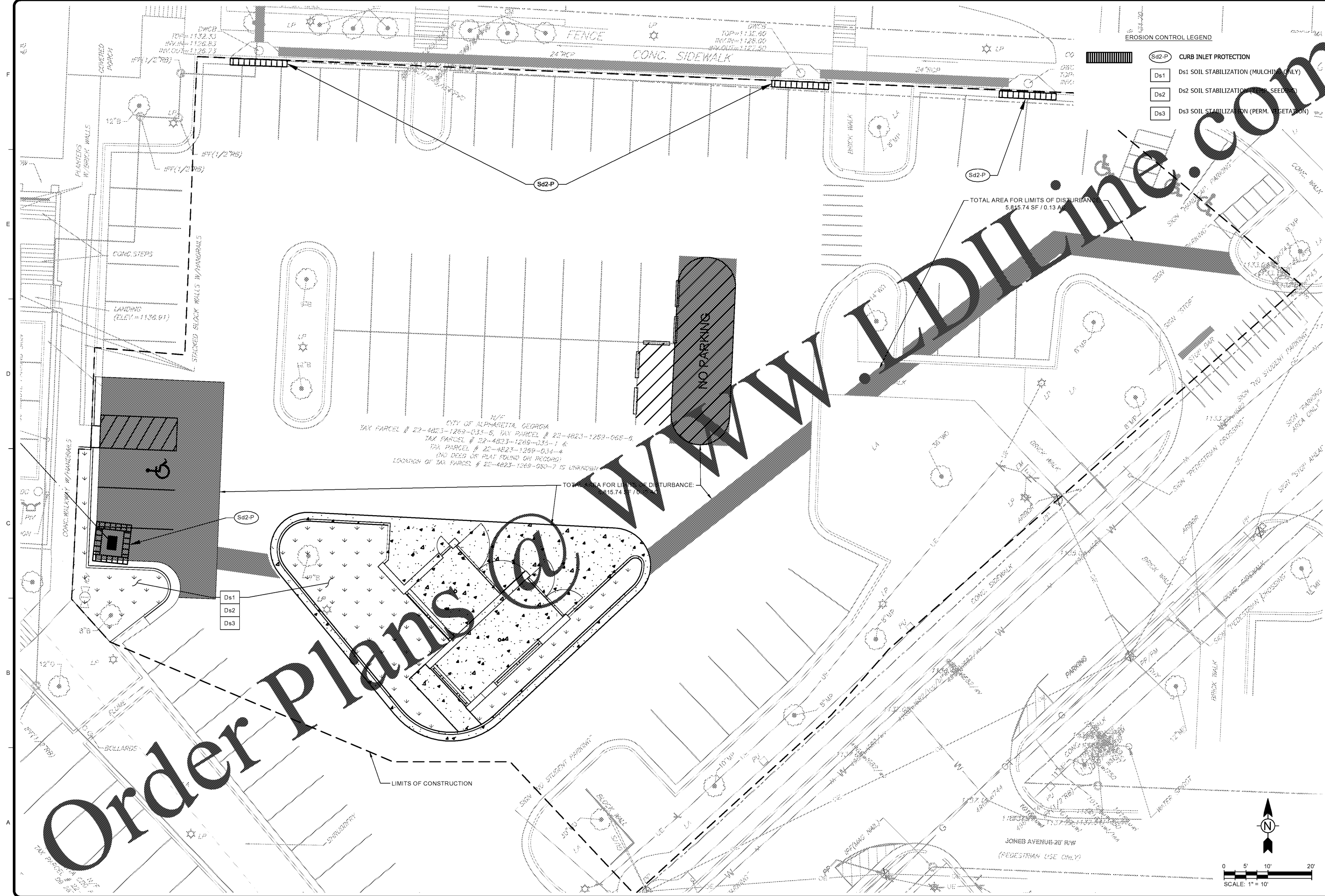


2/11/2019 1:57:17 PM - O:\PROJECTS\ATLANTA\1901200-01297-1901200\DWG\EROSION AND SEDIMENTATION CONTROL PLAN.DWG - GULMIRE, CALEB



EROSION CONTROL LEGEND

	Sd2-P CURB INLET PROTECTION
	Ds1 SOIL STABILIZATION (MULCHING ONLY)
	Ds2 SOIL STABILIZATION (SEEDING)
	Ds3 SOIL STABILIZATION (PERM. VEGETATION)

N/F
 CITY OF ALPHARETTA, GEORGIA
 TAX PARCEL # 22-4823-1269-035-5, TAX PARCEL # 22-4823-1269-065-6
 TAX PARCEL # 22-4823-1269-035-1 K
 TAX PARCEL # 22-4823-1269-034-4
 (NO DEED OR PLAT FOUND ON RECORD)
 LOCATION OF TAX PARCEL # 22-4823-1269-030-7 IS UNKNOWN

TOTAL AREA FOR LIMITS OF DISTURBANCE:
 5,815.74 SF / 0.13 AC

TOTAL AREA FOR LIMITS OF DISTURBANCE:
 1,815.74 SF / 0.04 AC

TETRA TECH

 www.tetra-tech.com
 1889 POWERS FERRY RD SE STE 400
 ATLANTA, GA 30339
 TEL: (770) 850-0949 FAX: (770) 850-0650

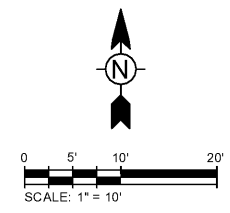
GSWCC LEVEL 1
 CERT. # 0000060744

MARK	DATE	DESCRIPTION	BY	CG	MS
01	01/14/19	80% SUBMITTAL			
02	02/11/19	ISSUED FOR BID			

CITY OF ALPHARETTA
 OLD ROSWELL ST PARKING LOT
 IMPROVEMENTS PROJECT
**EROSION AND
 SEDIMENTATION CONTROL
 PLAN**

PROJ:	200-01297-19012
DESN:	CG
DRWN:	HA
CHKD:	DL

C-105



Copyright Tetra Tech