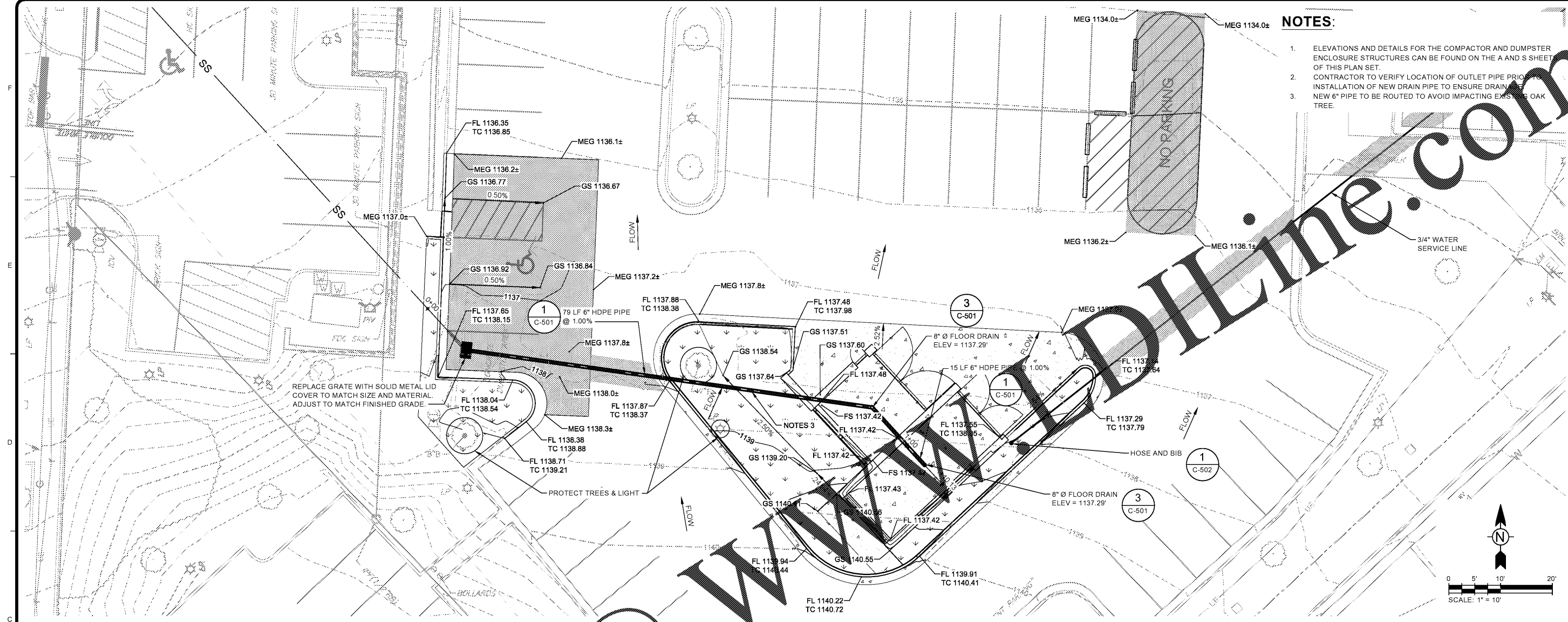
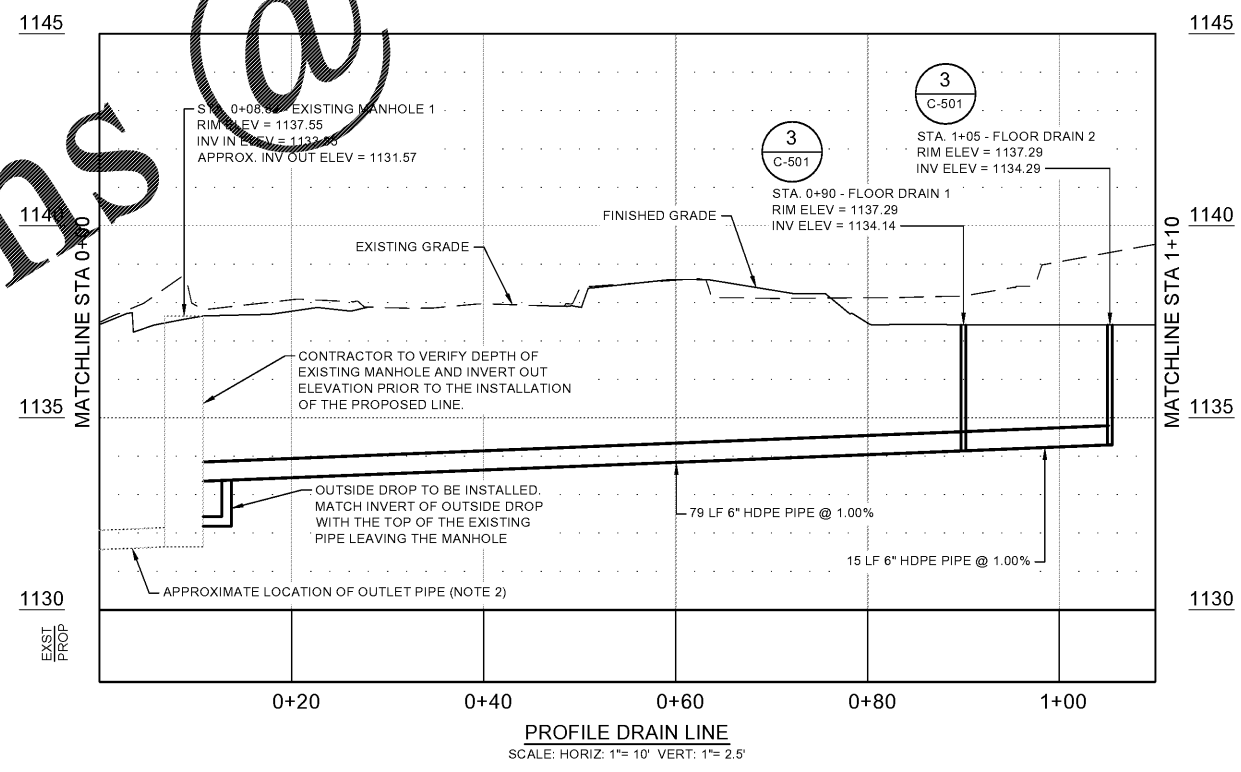
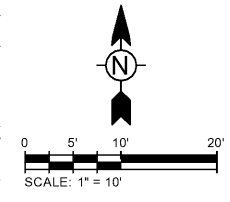


2/11/2019 1:56:59 PM - O:\PROJECTS\ATLANTA\1901200\01297-19012\DWG\DRG-104-GRADING AND DRAINAGE PLAN.DWG - GULMIRE, CALEB



**NOTES:**

- ELEVATIONS AND DETAILS FOR THE COMPACTOR AND DUMPSTER ENCLOSURE STRUCTURES CAN BE FOUND ON THE A AND S SHEETS OF THIS PLAN SET.
- CONTRACTOR TO VERIFY LOCATION OF OUTLET PIPE PRIOR TO INSTALLATION OF NEW DRAIN PIPE TO ENSURE DRAINAGE.
- NEW 6" PIPE TO BE ROUTED TO AVOID IMPACTING EXISTING OAK TREE.



Order Plans @

TETRA TECH

GSWCC LEVEL II  
CERT. # 0000060744

MARK	DATE	DESCRIPTION
01	01/14/19	60% SUBMITTAL
02	02/11/19	ISSUED FOR BID

BY: \_\_\_\_\_

CG: \_\_\_\_\_

MS: \_\_\_\_\_

PROJ: 200-01297-19012

DESN: CG

DRWN: HA

CHKD: DL

CITY OF ALPHARETTA  
OLD ROSWELL ST PARKING LOT  
IMPROVEMENTS PROJECT

GRADING AND DRAINAGE  
PLAN

C-104

Copyright: Tetra Tech