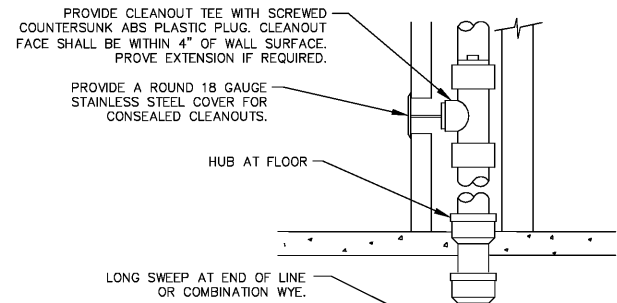


- COMMENTS:
- IF FLOOR SLAB IS EXISTING, SAW CUT FLOOR, EXCAVATE AS REQUIRED. INSTALL PIPING, REPAIR VAPOR BARRIER AND PATCH FLOOR AS REQUIRED.
 - PIPING TO HAVE LONG RADIUS TURNS WITH NO KINKS IN THE LINE.
 - THERE SHALL BE NO CONTACT OF COPPER PIPE WITH ANY OTHER PIPE, CONDUIT, OR REINFORCING STEEL.
 - SEPARATE HOT AND COLD WATER LINES BY 12" MINIMUM.

3 WATER PIPE UNDER SLAB

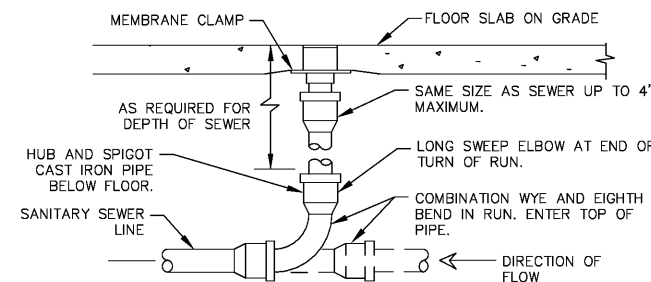
NONE



- COMMENTS:
- PROVIDE WALL CLEANOUT (WCO) WHERE SHOWN ON PLAN AND ON SANITARY WASTE BRANCHES NOT SERVED WITH A FLOOR CLEANOUT.

4 WALL CLEANOUT

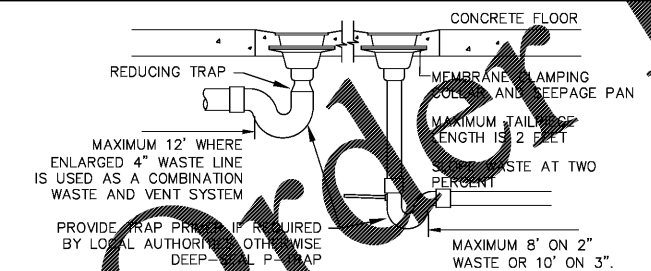
NONE



- COMMENTS:
- LOCATE AT BUILDING EXIT, AT ENDS OF RUNS, AT TURNS OF PIPE GREATER THAN 45 DEGREES, AT 50' INTERVALS ON STRAIGHT RUNS, AND/OR WHERE SHOWN ON PLANS. PROVIDE BACKFILL PER ARCHITECTURAL SPECIFICATIONS. LOCATE CLEANOUTS WHERE THERE IS 18" CLEAR AROUND. CONSULT LOCAL CODES FOR OTHER FCQ REQUIREMENTS.
 - ROUND SECURED GASKETED NICKEL BRONZE ADJUSTABLE TOP WITH "CO" CAST IN COVER. PROVIDE CLEANOUT TOP WITH VARIATIONS SUITABLE FOR FLOOR COVERING (CARPET MARKER, RECESSED FOR TILE, SCORIFIED FOR UNFINISHED FLOORS). PROVIDE GASKETED PLASTIC PLUG IN CAST IRON BODY. USE TEFLON JOINT COMPOUND ON PLUG THREADS. CLEAN THE TOP OF EXPOSED FCQ AFTER INSTALLATION.

6 FLOOR CLEANOUT DETAIL

NONE



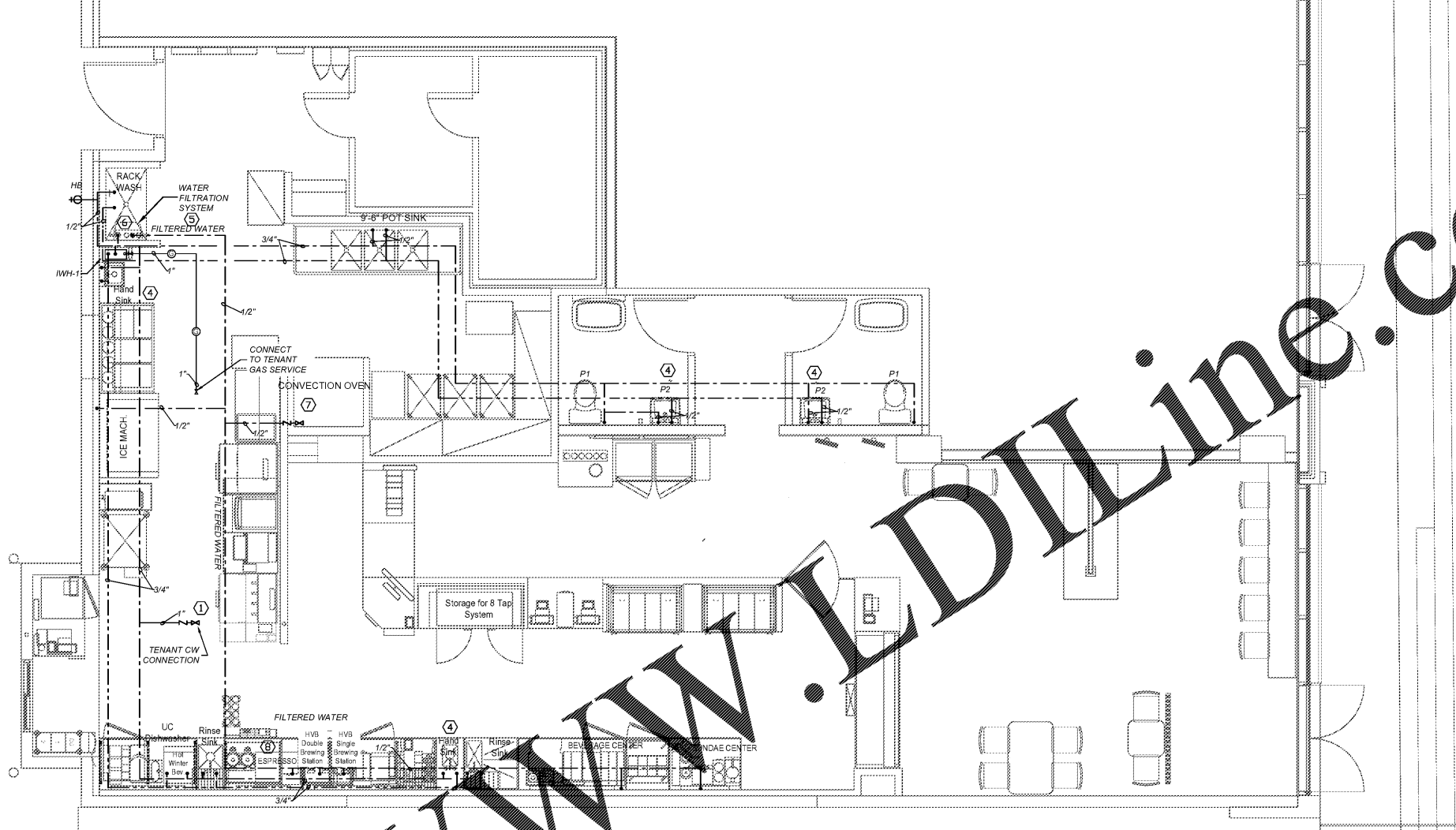
- COMMENTS:
- LOCATE FLOOR DRAIN/SINK WHERE SHOWN ON DIMENSIONED FLOOR PLAN. IF SITUATION IS AT FLOOR SLAB ON GRADE, SET DRAIN BODY IN PLACE, PROVIDE BACKFILL, AND POUR AROUND IT. RECESS TOP OF FLOOR DRAINS 1/2" BELOW FLOOR DATUM AND SLOPE FLOOR. DO NOT RECESS FLOOR SINKS.
 - OTHER VENTING METHODS MAY BE USED, IF APPROVED BY LOCAL CODE AND/OR LOCAL AUTHORITIES.

5 FLOOR DRAIN AND SINK DETAIL

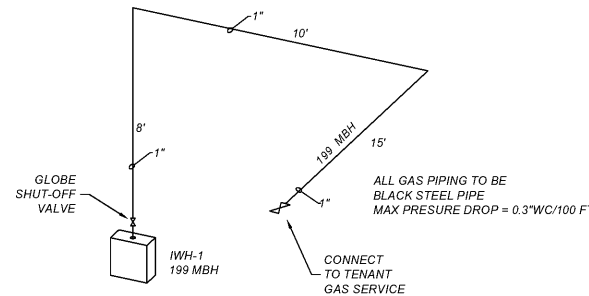
NONE

1 WATER, GAS PLUMBING PLAN

N.T.S.



GAS LINE SIZING					
BLACK STEEL PIPE, LINE PRESSURE: 1" WC, PRESSURE DROP = 0.3" WC/100 FT					
EQUIPMENT	BTU/HR	EQL LENGTH (FT)	LINE SIZE (IN)	PRESSURE DROP (IN. WC.)	DELIVERY PRESSURE (IN. WC.)
IWH-2	199,000	61	1	.23	6.8

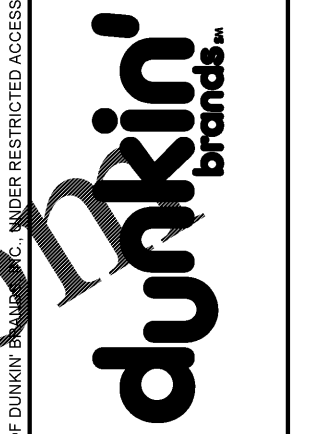


2 GAS PIPING RISER

N.T.S.

KEYED NOTES:

- CONNECT TO EXISTING WATER LINE. CONTRACTOR TO VERIFY SIZE AND LOCATION IN FIELD. PROVIDE BACKFLOW PREVENTOR PER REQUIREMENTS OF LOCAL JURISDICTION.
- PIPE INDIRECT DRAIN FROM TROUGH ON COUNTER AT COFFEE STATIONS TO FLOOR SINK. PROVIDE AIR GAP AS REQUIRED BY CODE.
- PROVIDE INDIRECT DRAIN FROM ICE CUBER AND ICE BIN TO ADJACENT FLOOR SINK. CONSULT ICE MACHINE INSTRUCTION MANUAL FOR INDIRECT PIPING REQUIREMENTS.
- PROVIDE THERMOSTATIC MIXING VALVE AT ALL HAND SINKS AND LAVATORIES IF NOT ALREADY PROVIDED WITH THEM. SET AT 110°F MAXIMUM.
- ROUTE FILTERED WATER AND COLD WATER LINES IN WALL. TRANSITION TO TYPE K COPPER PIPE. ROUTE LINES UNDERGROUND THROUGH 2" PVC PIPE TO UNDER COUNTER. TRANSITION BACK TO STANDARD COPPER PIPING AND ROUTE TO EQUIPMENT AS NECESSARY. PVC PIPE SHALL STUB UP ABOVE FINISHED FLOOR.
- WATER FILTRATION SYSTEM. MOUNT TOP OF SYSTEM 48" AFF. VERIFY ACTUAL LOCATION.
- PROVIDE A PRESSURE REDUCING VALVE, PRESSURE GAUGE, AND SHUT-OFF VALVE AT PLUMBING CONNECTIONS TO OVEN.
- PROVIDE A PRESSURE REDUCING VALVE FOR ESPRESSO MACHINE.
- INSTALL 2 1/2" O.D. PVC CONDUIT IN CEILING FROM BACK OF HOUSE TO BACKLINE WALL FOR FUTURE CARBONATOR LINES. VERIFY ACTUAL LOCATION WITH ARCHITECT. FUTURE CARBONATOR REQUIRES UNFILTERED WATER. TAP OFF OF CLOSEST HANDSINK OR UNFILTERED SOURCE CLOSEST TO THE UNIT, AND CAPAT WALL IF ONLY THE PLACEHOLDER IS SELECTED AT THE TIME OF CONSTRUCTION.



RM3 ENGINEERING
2302 Brackett Road
TUCKER, GEORGIA 30084
770 934 0944

DATE	SCALE	DRAWN	CHKD	APPD
2-25-19	1/4"=1'-0"	SR	RMS	

NO	DESCRIPTION	DATE	SHEET REVISIONS

DUNKIN DONUTS SPRING STREET
1270 SPRING ST, SUITE 3, ATLANTA, GA 30309

WATER, GAS PLUMBING PLANS

3E18-130

P-2