

1 LIGHTING PLAN
1/4"=1'-0"

GENERAL NOTES:

- A. ALL WORK SHALL COMPLY WITH ALL LOCAL AND STATE CODES AND AUTHORITIES HAVING JURISDICTION.
 - B. THE CONTRACTOR SHALL SECURE AND PAY FOR ALL REQUIRED PERMITS AND ARRANGE ALL REQUIRED INSPECTIONS.
 - C. THE CONTRACTOR SHALL COORDINATE HIS WORK WITH OTHER CONTRACTORS AND TRADES.
 - D. THESE DRAWINGS, AS PREPARED, ARE DIAGRAMMATIC BUT SHALL BE FOLLOWED AS CLOSELY AS CONSTRUCTION OF THE PROJECT AND THE WORK OF THE TRADES WILL PERMIT. EQUIPMENT LOCATIONS INDICATED ARE APPROXIMATE. COORDINATE EXACT LOCATIONS AND REQUIRED CLEARANCES WITH EQUIPMENT SUPPLIER AND ALL TRADES PRIOR TO INSTALLATION.
 - E. THE CONTRACTOR SHALL FURNISH AND INSTALL ALL THE EQUIPMENT INDICATED WITHIN THESE DRAWINGS UNLESS OTHERWISE NOTED. VERIFY LOCATION AND DIMENSIONS IN THE FIELD PRIOR TO FABRICATION AND / OR INSTALLATION.
 - F. ALL ROOF PENETRATIONS SHALL BE AT THE CONTRACTOR'S EXPENSE. COORDINATE WITH OWNER'S ROOFING CONTRACTOR SO AS NOT TO VOID ANY EXISTING ROOF WARRANTIES.
 - G. THE ENTIRE INSTALLATION SHALL BE GUARANTEED FREE OF DEFECTS AND CONTRACTOR SHALL REPAIR AND / OR REPLACE ANY DEFECTIVE MATERIALS OR EQUIPMENT AT NO COST TO THE OWNER FOR A MINIMUM PERIOD OF ONE YEAR FROM THE DATE OF ACCEPTANCE BY ARCHITECT OR ENGINEER.
 - H. ALL WORK SHALL BE SUBJECT TO THE ACCEPTANCE AND APPROVAL OF THE ARCHITECT AND OWNER. THE ARCHITECT SHALL BE NOTIFIED OF ANY AND ALL DISCREPANCIES BETWEEN THE CONDITIONS AND CONTRACT DOCUMENTS BEFORE PROCEEDING WITH THAT PORTION OF THE WORK. FAILURE TO PROVIDE PROPER NOTIFICATION DOES NOT RELIEVE THE CONTRACTOR. THE CONTRACTOR SHALL CORRECT ANY AND ALL WORK ARISING FROM SUCH FAILURE TO COORDINATE DISCREPANCIES TO THE SATISFACTION OF THE ARCHITECT WITHOUT ADDITIONAL COST TO THE OWNER.
 - I. COORDINATE ALL EQUIPMENT UTILITY INFORMATION SHOWN ON THIS SHEET WITH THE DUNKIN' BRANDS EQUIPMENT SCHEDULE AND EQUIPMENT MANUFACTURER'S CLIP SHEET.
 - J. ALL EXTERIOR LIGHTS TO BE TIMECLOCK CONTROLLED.
 - K. ALL 15 AND 20 AMP, 120 VOLT RECEPTACLES IN KITCHEN AND PREP AREAS SHALL BE GFI TYPE.
 - L. ALL JUNCTION BOXES SHOWN ON THIS PLAN ARE TO BE INSTALLED ABOVE THE FINISHED CEILING.
 - M. ALL EMERGENCY AND EXIT FIXTURES SHALL BE CONNECTED TO LOCAL LIGHTING CIRCUIT AHEAD OF ANY SWITCHING DEVICES. ADDITIONAL FIXTURES AS NOTED SHALL MEET THE CODE REQUIREMENTS PER LOCAL REQUIREMENTS.
 - N. PROVIDE WALL BLOCKING BEHIND ALL EXTERIOR LIGHTING FIXTURES COORDINATE WITH GENERAL CONTRACTOR.
- THE CONTRACTOR IS RESPONSIBLE FOR REVIEWING THE LATEST KITCHEN PLANS AND EQUIPMENT CUTS SHEETS FOR PROPER EQUIPMENT LOCATIONS AND CONNECTION REQUIREMENTS PRIOR TO STARTING WORK.

KEYED NOTES:

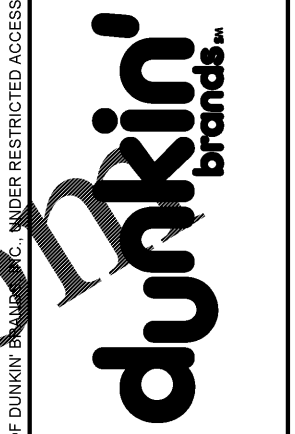
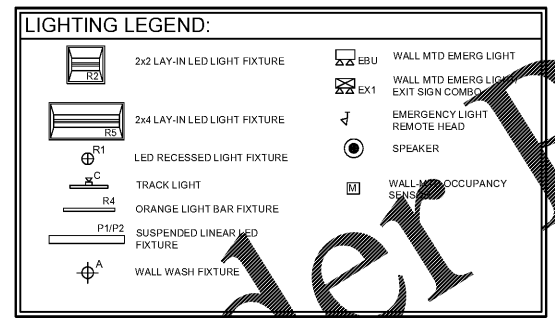
- 1. INTERLOCK TOILET ROOM LIGHT WITH EXHAUST FAN.
- 2. PROVIDE SWITCHES WITH PILOT LIGHTS FOR WALK-IN REFRIGERATOR AND FREEZER.
- 3. CIRCUIT EXTERIOR SIGNS THROUGH TIMECLOCK. VERIFY QUANTITY AND LOCATION WITH ARCHITECTURAL DRAWINGS.
- 4. CIRCUIT EXTERIOR LIGHTS THROUGH TIMECLOCK. VERIFY QUANTITY AND LOCATION WITH ARCHITECTURAL DRAWINGS.
- 5. SPEAKER AND SOUND SYSTEM TO BE PROVIDED AND INSTALLED BY ELECTRICAL CONTRACTOR. LOCATE VOLUME CONTROL IN THE OFFICE. SEE ARCHITECTURAL CEILING PLAN FOR EXACT LOCATION AND CONTROL.
- 6. FIELD VERIFY SWITCH LOCATIONS AND CONFIGURATIONS. COORDINATE WITH OWNER REP.

MUSIC SYSTEM NOTES:

- 1. MUSIC SYSTEM IS REQUIRED IN ALL NEW AND REMODEL STORES. MUSIC SYSTEM TO USE DBI APPROVED PROGRAMMING.
- 2. ALL CEILING SPEAKERS TO BE FLUSH MOUNTED WHITE. ALL EXTERIOR SPEAKERS TO BE BLACK, WITH EXTERIOR GRADE CONSTRUCTION.
- 3. ONE SPEAKER IN EACH BATHROOM TO BE FLUSH MOUNTED WHITE.
- 4. A MINIMUM OF TWO SPEAKERS IN THE SEATING AREA (NO SPEAKERS IN THE SERVICE AREA).
- 5. A MINIMUM OF TWO SPEAKERS AT EXTERIOR SEATING AREAS WHERE APPLICABLE.
- 6. SPEAKER AT EXTERIOR OF BUILDING ADJACENT TO ENTRY.
- 7. PROVIDE AND INSTALL SEPARATE VOLUME CONTROLS FOR EACH AREA (RESTROOMS, SEATING AREA, EXTERIOR).
- 8. HARDWARE TO BE INSTALLED IN THE OFFICE. FIELD VERIFY AND COORDINATE WITH FRANCHISE FOR THE EXACT LOCATION OF THE UNIT AND VOLUME CONTROLS.

LIGHTING SCHEDULE			
CODE	DESCRIPTION	MANUFACTURER	PRODUCT
A	WALL WASH LIGHT - USED AT ARTWORK AND GRID SIGN	CONTECH	RL20SA3-35K-12-D/ CTR2002CLR-P
B	WALK-IN LIGHT - USED BY VENDOR FOR WALK-IN	VARIES	VARIES
C	TRACK LIGHT & HEAD - USED ON WALL WORK AND WHERE	JUNO	FR00L-35K-BL
EBU-W	ULTRA CONTACT EMERGENCY UNIT (WHITE)	EXITRONIX	EBU-W-LED-51-62
EBU-B	ULTRA CONTACT EMERGENCY UNIT - USED ON WT-02 WALL	EXITRONIX	EBU-B-LED-51-62
EV	EXTERIOR COMBO LED REMOTE EXIST LIGHT HEAD - USED ABOVE	EXITRONIX	TYPE EMR EXITRONIX MLED-1-W-WH
EW	WALL PACK (GRAY) EXTERIOR - USED ON DARK WALL FINISH	WAC	WP-LED227-30-AWK-GRAY
EW	WALL PACK (WHITE) EXTERIOR - USED ON LIGHT WALL FINISH	WAC	WP-LED227-30-AWK-WHITE
BL	COMBO LED EXIT SIGN W/ LIGHT HEADS (WHITE)	EXITRONIX	VEX-U-BP-WB-WH-EL90
BL	BATHROOM SODICNE	SEAGULL	4917D
LED 2	EXTERIOR RECESSED LIGHT FIXTURE - USED UNDER ORANGE	DMF	DMF-DRDR-R-4/ DRD2M-10-8-40/ DRD2T-R-4-S-W
LED 11	EXTERIOR LIGHT FIXTURE - USED ABOVE ORANGE BEAM CANOPY	SOLID STATE LUMINAIRES SOLUTIONS OF LIGHTING	SSL-LSSL-8135-250 LUMENS
LED 12	EXTERIOR LIGHT FIXTURE - USED ON TOP OF LOWER MONMOUTH	SOLID STATE LUMINAIRES SOLUTIONS OF LIGHTING	SSL-LSSL-5165-400 LUMENS
OC	WALL MOUNTED OCCUPANCY SENSOR	WATTSTOPPER	WS-250-W
P1	8' SUSPENDED LINEAR LIGHT FIXTURE - USED IN SEATING/ SALES	TEXAS FLUORESCENTS	SES-FR-96L-S62WR200L-DMV-35K-BK
P2	4' SUSPENDED LINEAR LIGHT FIXTURE - USED IN SEATING/ SALES	TEXAS FLUORESCENTS	SES-FR-48L-S62W3100L-DMV-35K-BK
P3	PENDANT CHANDELIER - USED ABOVE COMMUNITY TABLE	TECH LIGHTING	700TD-ALVPMC-BB-LED90
PKL3	PARKING LOT LIGHTING	COOPER LIGHTING	LUMARK PRV-PREVAL PRV-A40-JUNV-T3-SA-BZ
PKL4	PARKING LOT LIGHTING	COOPER LIGHTING	LUMARK PRV-PREVAL PRV-A40-JUNV-T4-SA-BZ
R1	RECESSED LED LIGHT FIXTURE	HALO	PD820-0010-BI-PDM8B835/61VCWF
R2	2x2 RECESSED LIGHT FIXTURE - USED IN FRONT OF HOUSE	LSI	ELFP-22 2x2
R3	4' LED ADJ DOWNLIGHT, 400K, 200 LUMEN	NORA	NCH-436-L20-40-D-SF
R4	LED LINEAR LIGHT BAR - USED ABOVE FRONT LINE	PINNACLE ARCHITECTURAL LIGHTING	EX33A-39HO-XX-AC48UB-120-1C-CC-PMS165
R5	2x4 LED RECESSED LIGHT FIXTURE - USED IN BACK OF HOUSE	LSI	ELFP24 2x4
WSCX-2	EXTERIOR GOOSENECK LIGHT FIXTURE - USED AT ACCENT PANELS	H-LITE MFG INC.	H-HDMR16/18-1.119 MR16AD1C2500107-10-S1

- LIGHTING SCHEDULE NOTES
- 1. PROVIDE ALL FIXTURES COMPLETE WITH LAMPS. REFER TO NATIONAL ACCOUNT SOURCE INFO FOR LAMP SPECS & VLLA LIGHTING RE-LAMPING PROGRAM.
 - 2. ALL BALLASTS SHALL BE HIGH POWER FACTOR.
 - 3. PROVIDE HOLD-DOWN CLIPS FOR EACH CORNER OF FLUORESCENT GRID TROFFERS.
 - 4. COORDINATE AND VERIFY ALL FIXTURE INFORMATION, TYPES AND FINAL LOCATIONS WITH THE REFLECTED CEILING PLAN.
 - 5. LAMPS SHALL BE AS MANUFACTURED BY SYLVANIA, WESTINGHOUSE, GENERAL ELECTRIC OR APPROVED EQUAL.



THESE PLANS ARE CONFIDENTIAL PROPERTY OF DUNKIN' BRANDS, INC. UNDER RESTRICTED ACCESS.

RM3 ENGINEERING
2302 Brockett Road
TUCKER, GEORGIA 30084
770 934 0944

NO	DESCRIPTION	DATE	SCALE	DRAWN	CKD	APPD

DUNKIN DONUTS SPRING STREET
1270 SPRING ST., SUITE 3, ATLANTA, GA 30309

ELECTRICAL LIGHTING PLAN

3E18-130

E-1