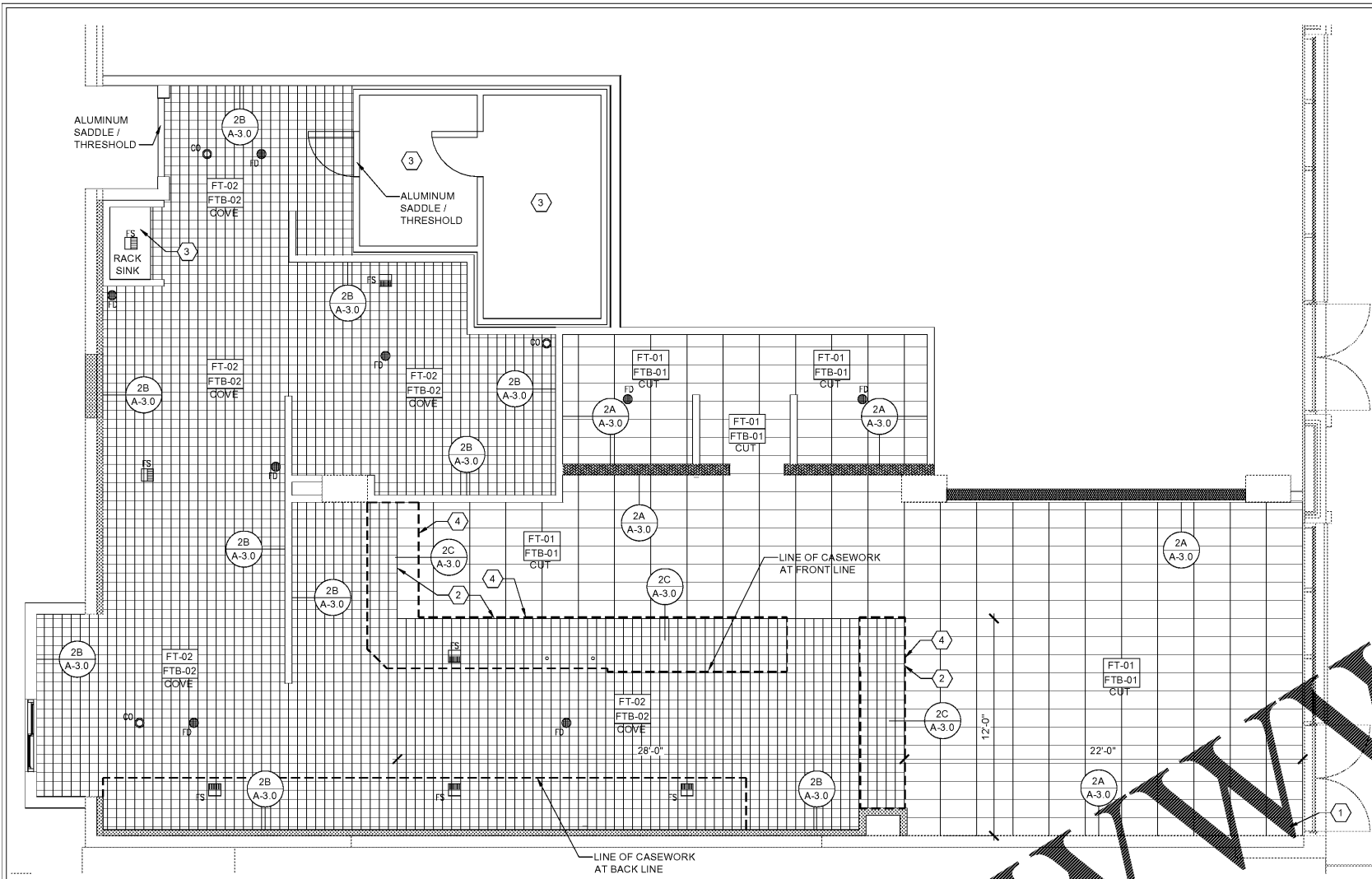
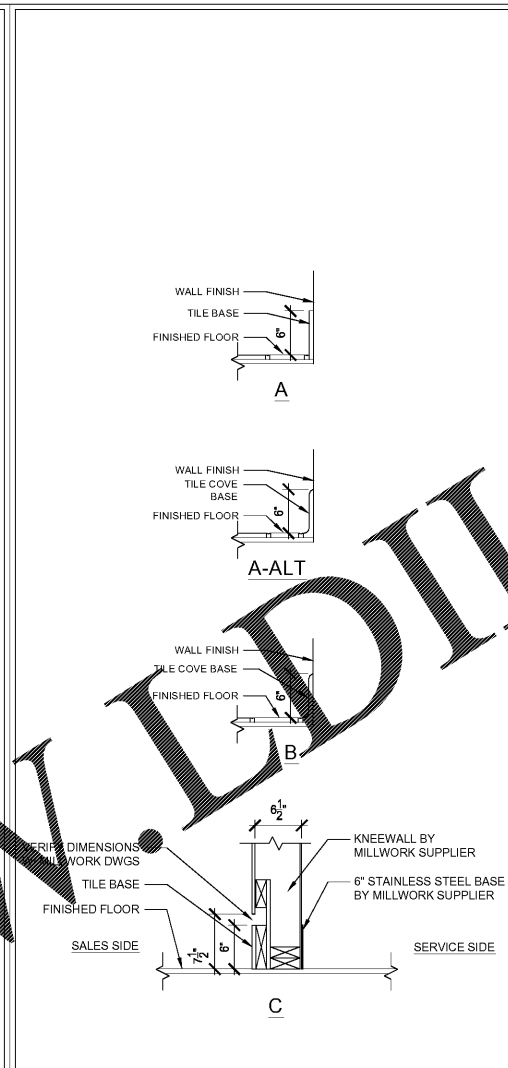


2: Project: 18-028: 1270 Spring Street Drawing: A-3.0.dwg
 05/11/2018 10:00 AM



1 FLOOR FINISH PLAN
 1/4" = 1'-0" NOTE:



2 TILE BASE DETAIL
 1" = 1'-0" NOTE:

- PLAN NOTES**
- 1 TILE WORK STARTING POINT.
 - 2 TILE TRANSITION MUST OCCUR UNDER FRONTLINE MILLWORK - (TYP.)
 - 3 NO TILE @ BACKWASH/ MOP SINK
 - 4 G.C. TO PROVIDE AND INSTALL TILE WALL BASE AT FRONTLINE MILLWORK.

- LEGEND**
- XX FLOOR FINISH MATERIAL
 - XX WALL BASE MATERIAL
 - FD FLOOR DRAIN
 - FS FLOOR SINK
 - OB FLOOR CLEAN OUT

THESE PLANS ARE CONFIDENTIAL PROPERTY OF DUNKIN' BRANDS, INC. UNDER RESTRICTED ACCESS.

WWW.LDILINE.COM

HAMBLY ARCHITECTURE & DESIGN, INC.
 6370 CORN DRIVE
 CUMMING GEORGIA 30028
 770-887-9124

STATE OF GEORGIA
 Registered Professional Architect
 No. 272519

NO	DESCRIPTION	DATE	SCALE	DRAWN	PHH	CKD	APPD

RELEASED FOR CONSTRUCTION
 DUNKIN - 1270 SPRING STREET, SUITE 7
 ATLANTA GA 30309
**FINISH FLOOR PLAN,
 DETAILS AND NOTES**
 ARCHITECT PROJECT #18-028

A-3.0

Order Plans @