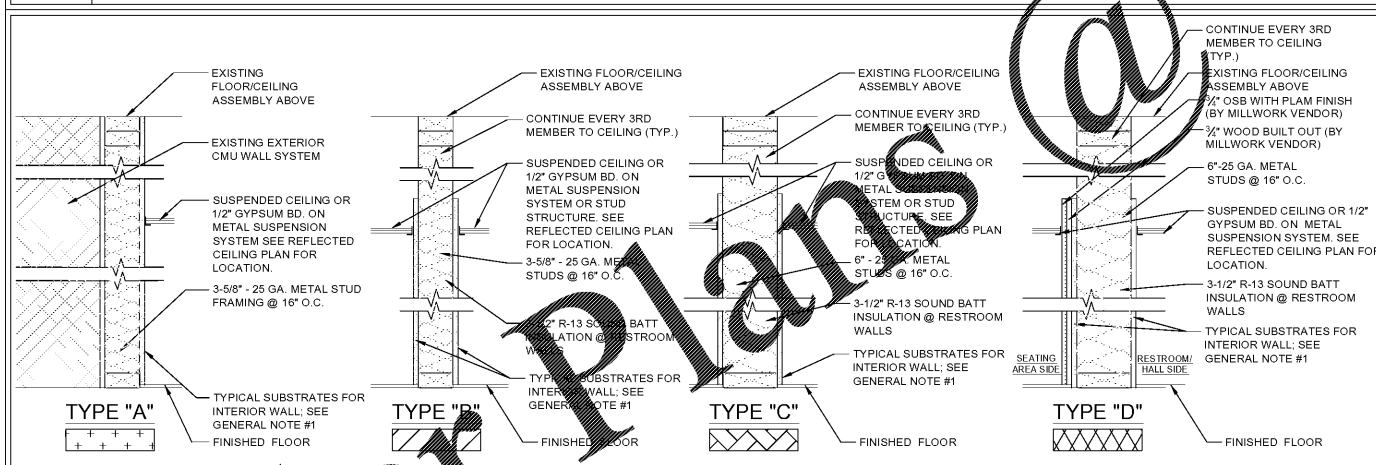
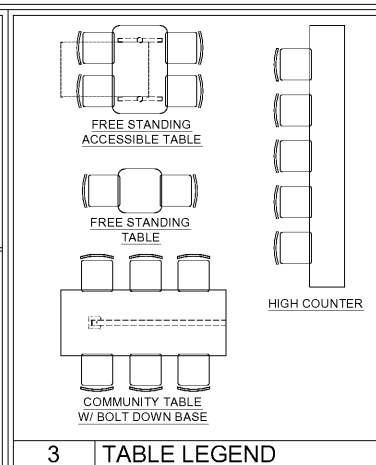


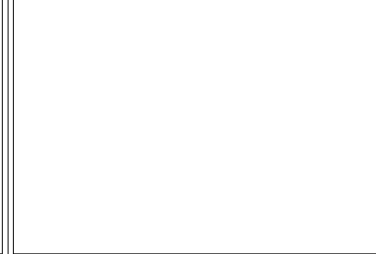
1 FLOOR PLAN
1/4" = 1'-0" NOTE



- 2 PARTITION TYPES**
1-1/2" = 1'-0" NOTE
- NOTES:**
- ALL JOINTS BETWEEN THE WALL SURFACES AND THE EDGES OF ATTACHED ELEMENTS SHALL BE SEALED AS AN ANNULAR OPENING AROUND THE PIPE. OTHER CONDUIT SHALL BE SEALED WITH A MIXTURE OF STEEL WOOL AND PERFORMANCE CAULKING COMPOUND.
 - INSURE PLATES AND THE JOINTS BETWEEN WALLS AND CEILING SHALL BE SEALED.
 - DRY SHAF PIPING PENETRATIONS: OPENINGS FROM CRAWL SPACE AND ATTIC SHALL BE SEALED.
 - ALL SHAFTS: PROPER FLASHING AROUND FLUE AND GAPS SEALED AND CAULKED
 - ALL PENETRATIONS AT EXTERIOR WALLS SHALL BE SEALED INCLUDING VENTS AND ELECTRICAL CONDUIT & BOXES.
 - PROVIDE CORROSION-PROOF RODENT/BIRD SCREENS (E.G., STEEL MESH) FOR ALL BUILDING OPENINGS THAT CANNOT BE FULLY SEALED AND CAULKED (E.G., VENTILATION SYSTEM INTAKE / EXHAUST OUTLETS AND ATTIC VENT OPENINGS).
 - INTERIOR WALL INSULATION & FIRE BLOCKING**
 - ALL INTERIOR PARTITIONS ARE TO BE INSULATED USING UNFACED BATT INSULATION REFER TO PARTITION TYPE KEYS THROUGHOUT PLANS.
 - UNFACED BATT INSULATION ALSO ACTS AS FIRE BLOCKING WITHIN THE STUD WALLS: SECURE INSULATION WITHIN STUD SPACING.
 - BATT INSULATION SHALL FILL THE ENTIRE DEPTH OF WALL CAVITY. PACK TIGHTLY AROUND PIPING OR CONDUIT WITHIN WALL CAVITY.
 - EXTEND INSULATION 12" ABOVE CEILING LINE.



3 TABLE LEGEND
1/4" = 1'-0" NOTE



4 NOT USED
1/4" = 1'-0" NOTE

- GENERAL NOTES:**
- TYPICAL SUBSTRATES FOR INTERIOR WALLS SHALL BE AS FOLLOWS:
PREP/ KITCHEN AND STORAGE AREAS:
0'-0" TO 3'-0" - 1/2" DUROCK CEMENT BOARD, 3'-0" AND ABOVE - 1/2" ORIENTED STRAND BOARD (OSB)
SERVICE AREA:
1/4" MIN. ORIENTED STRAND BOARD (OSB), 1/2" DUROCK CEMENT BOARD BEHIND PORCELAIN/ CERAMIC TILES.
SALES AND SEATING AREAS:
1/2" GYPSUM BOARD, 1/2" DUROCK CEMENT BOARD BEHIND CERAMIC TILES, 1/4" ORIENTED STRAND BOARD @ DECORATIVE PLAM "WOOD" WALLS.
RESTROOMS:
1/2" DUROCK CEMENT BOARD
- GENERAL CONTRACTOR SHALL PROVIDE ADEQUATE BLOCKING AS REQUIRED THROUGHOUT. IN RESTROOMS FOR GRAB BARS, LAVATORIES, HAND DRIERS, MIRRORS, PAPER TOWEL DISPENSERS, SOAP DISPENSERS, AND OTHER ACCESSORIES UNLESS OTHERWISE NOTED. IN SERVICE AREA FOR VDU, WALL SHELVES, ETC.
 - DIMENSIONS SHOWN ARE TO THE FACE OF FINISH.
 - REFER TO EQUIPMENT "K" SHEETS FOR INFORMATION REGARDING THE EQUIPMENT AND EQUIPMENT LAYOUT.
 - SEE SHEET A-10.0 FOR DOOR SCHEDULE AND DOOR & FRAME TYPES.
 - THESE PLANS ARE CONSIDERED MINIMUM DUNKIN' BRANDS CORPORATE DESIGN REQUIREMENTS. THE STRUCTURAL DESIGN, FOOTING DESIGN, ADA COMPLIANCE AND GENERAL BUILDING REQUIREMENTS MUST BE EVALUATED AND CERTIFIED BY AN ARCHITECT REGISTERED IN THE STATE WHERE THIS STRUCTURE IS TO BE BUILT.
 - NOT USED
 - PROVIDE FIRE EXTINGUISHERS, TYPE ABC, WALL HUNG, TOP @ 5'-0" A.F.F. (B.C.G.) - NUMBER AND LOCATION DETERMINED BY LOCAL CODE
 - IF LARGER OFFICE IS REQUIRED, EXPAND TOWARD B.O.H. NOT F.O.H. SEEK D.B.I APPROVAL PRIOR TO PROCEEDING
 - LAYOUT NOTES:**
 - ARCHITECT & G.C. TO ENSURE 40" MINIMUM CLEAR ACCESS INTO AND THROUGHOUT THE STORE FOR DELIVERY OF LARGE EQUIPMENT ITEMS.
 - FOR STORES WITH CELLARS, THE FLOOR, WALL AND CEILING FINISHES WILL BE THE SAME FINISHES FOR PREP. AREA. REFER TO THE MASTER FINISH SCHEDULES ON SHEET GN-2.0, GN-2.1, GN-2.2 AND GN-2.3 FOR THE PROPER FINISHES.
 - FOR LOCATIONS WITH INTERIOR WALK-IN COOLERS:
 - FLOOR DRAIN WITH 2" DIA. WALK-IN COOLER DRAIN CONNECTION FROM INTERIOR OF WALK-IN (TYP.)
 - 2" MIN. AIR SPACE BETWEEN WALK-IN AND ADJACENT WALLS.
 - FOR NON-EXPANDED SLAB FOR WALK-IN BOXES, INTERIOR RAMP SHALL BE PROVIDED.
 - INDOOR AIR QUALITY MANAGEMENT REQUIREMENTS:**
 - DURING CONSTRUCTION THE USE OF SMOKING/TOBACCO PRODUCTS INSIDE THE BUILDING IS PROHIBITED.
 - CONTRACTOR AND SUB CONTRACTORS SHOULD MAKE EVERY EFFORT TO MAINTAIN CLEAN WORK AREAS.
 - CONSTRUCTION ACTIVITIES THAT PRODUCE DUST SHOULD TAKE PLACE PRIOR TO HVAC STARTUP/USE, AND EVERY EFFORT SHOULD BE MADE TO DIRECT THESE POLLUTANTS TO THE OUTDOORS WITH FANS.
 - MATERIALS THAT ARE ABSORPTIVE SHOULD NOT BE BROUGHT ON-SITE UNTIL THE BUILDING IS SUFFICIENTLY DRIED IN, AND SHOULD BE REMOVED FROM THE GROUND AND COVERED WITH VISQUEEN WHILE STORED ON SITE.
 - IF FAN FILTERING SYSTEMS WILL BE USED DURING CONSTRUCTION ACTIVITIES, TEMPORARY FILTRATION (MERV 8) SHOULD BE USED ON ALL RETURN AIR INTAKES, AND THE FILTERS INSIDE THE UNIT SHOULD BE REPLACED PRIOR TO BUILDING TURN OVER.
 - ALL INDOOR AIR QUALITY MANAGEMENT POLICIES OUTLINED ABOVE ARE PHOTOGRAPHED AT 25%, 50%, AND 75% PROJECT COMPLETION TO CONFIRM MEASURES WERE FOLLOWED.
 - CONSTRUCTION WASTE RECYCLING REQUIREMENTS:**
 - ALL CONSTRUCTION-RELATED RECYCLABLE WASTE SHOULD BE RECYCLED/REUSED OR OTHERWISE DIVERTED FROM LANDFILL WHENEVER POSSIBLE.
 - AT MINIMUM ALL CONCRETE, METAL, AND PLASTIC THAT MEETS LOCAL RECYCLING STANDARDS SHOULD BE RECYCLED
 - WHERE LOCAL MUNICIPALITIES OR VENDORS OFFER COMMINGLED RECYCLING OPPORTUNITIES TO HELP ACHIEVE OVER 50% CONSTRUCTION WASTE DIVERSION RATE FROM LANDFILL, FRANCHISEE SHOULD PURSUE.

PLAN NOTES:

- CASEWORK BY OTHERS.
- SLIDING DRIVE-THRU WINDOW - SEE DUNKIN' CONSTRUCTION SPECIFICATIONS ON GN SHEETS AND NATIONAL ACCOUNTS ON THE EXTRANET.
- NOT USED
- JANITOR'S SINK - PROVIDE DEDICATED WATER SUPPLY FOR P&G DISPENSER (SEE NATIONAL ACCOUNTS). P&G EQUIPMENT INSTALLED BY VENDOR- SEE DETAIL #10/ SHEET P-3.0
- RECESS MOUNT HAND DRYER W/ DBI BRANDING AND SUSTAINABILITY MESSAGE. REFER TO RESTROOM EQUIP. SCHEDULE ON SHT. A-8.1
- P.O.S. OUTLET BOX (48" A.F.F.) WITH 1/2" CONDUIT W/ PULLSTRING TO CEILING
- NOT USED
- CONC. FILLED STEEL BOLLARD - SEE DETAIL #3/ SHEET SP-1.1
- 3 COMPARTMENT SINK W/ 2 INTEGRATED DRAIN BOARDS- PROVIDE DEDICATED WATER SUPPLY FOR P&G DISPENSER (SEE NATIONAL ACCOUNTS). P&G EQUIPMENT INSTALLED BY VENDOR- SEE DETAIL #9/ SHEET P-3.0
- FROST PROOF HOSE BIB
- 2" X 2" BRUSHED ALUMINUM CORNER GUARDS, 6'-0" LONG (TYPICAL THROUGHOUT PREP. AREA)
- ELECTRICAL PANELS. SEE ELECTRICAL SHEETS
- HAND SINKS ARE REQUIRED WITHIN A 25 FT. RADIUS OF ALL WORK STATIONS IN SERVICE AREAS AND KITCHEN (OR PER LOCAL CODE IF MORE STRINGENT)
- SWING GATE @ HAND OFF AREA BY MILLWORK VENDOR.
- NOT USED
- PROVIDE DIRECT LINE W/ TEMPERATURE REGULATOR VALVE FROM HWH TO ALL HAND WASHING SINKS
- NOT USED
- G.C. TO PROVIDE ANCHOR BOLTS FOR SLAB MOUNTED SAFE IN OFFICE. REFER TO SPECIFICATIONS TO BE PROVIDED BY FRANCHISEE
- WATER FILTRATION SYSTEM (BRANCH OFF MAIN LINE) FOR COFFEE BREWING EQUIPMENT, BEVERAGE MACHINES, ETC.; LOCATE ABOVE WATER METER
- PROVIDE PHIFER, INC SHEERWEAVE #2390 MYLAR SHADES @ WINDOWS AS INDICATED. COLOR: BRONZE/ BRONZE. SEE CONSTRUCTION SPECIFICATIONS ON GN-1.5 AND NATIONAL ACCOUNTS SUPPLIER ON THE EXTRANET.
- CORE DRILL. SEE DETAIL #6/ SHEET A-9.0
- CANOPY OVERHEAD
- MILLWORK SUPPLIER SHALL PROVIDE ACCESS FOR UTILITIES & CLEANING AT ALL FRONT LINE MILLWORK
- PROVIDE CLEAR, ANODIZED ALUM EDGE TRIM (SCHLUTER "JOLLY") FOR FULL HEIGHT OF WALL @ EXTERNAL CORNERS & ALL LOCATIONS WHERE TILE ENDS.
- DECORATIVE VERTICAL WOOD SLAT MODULES. SEE DETAIL #6/ SHEET A-9.0 AND NATIONAL ACCOUNTS ON THE EXTRANET
- EXISTING CONCRETE COLUMN
- EXISTING STRUCTURE
- DEMO EXISTING STRUCTURE AS SHOWN
- "PLAN TUBE" MOUNTED ON WALL
- WD-01 WOOD ACCENT WALL: BUILT OUT AND FINISH TO BE PROVIDED BY MILLWORK VENDOR; MILLWORK CORNER TRIM BY MILLWORK VENDOR (TYP.). SEE DETAIL #11/ SHEET A-9.0.

NOTE: DRAWINGS ARE NOT TO SCALE IF SHEET IS PLOTTED ON 11" x 17"

THESE PLANS ARE CONFIDENTIAL PROPERTY OF DUNKIN' BRANDS, INC. UNDER RESTRICTED ACCESS.

RELEASED FOR CONSTRUCTION

DUNKIN' - 1270 SPRING STREET, SUITE 7
ATLANTA GA 30309

FLOOR PLAN, NOTES & PARTITION TYPES

ARCHITECT PROJECT #18-028

10182018

DATE: 2/25/19

SCALE:

DRAWN: PHH

CKD

APPD

SET REVISIONS

NO DESCRIPTION

SHEET REVISIONS

HAMBY ARCHITECTURE & DESIGN, INC.
6370 CORN DRIVE
CUMMING GEORGIA 30028
770-887-9124