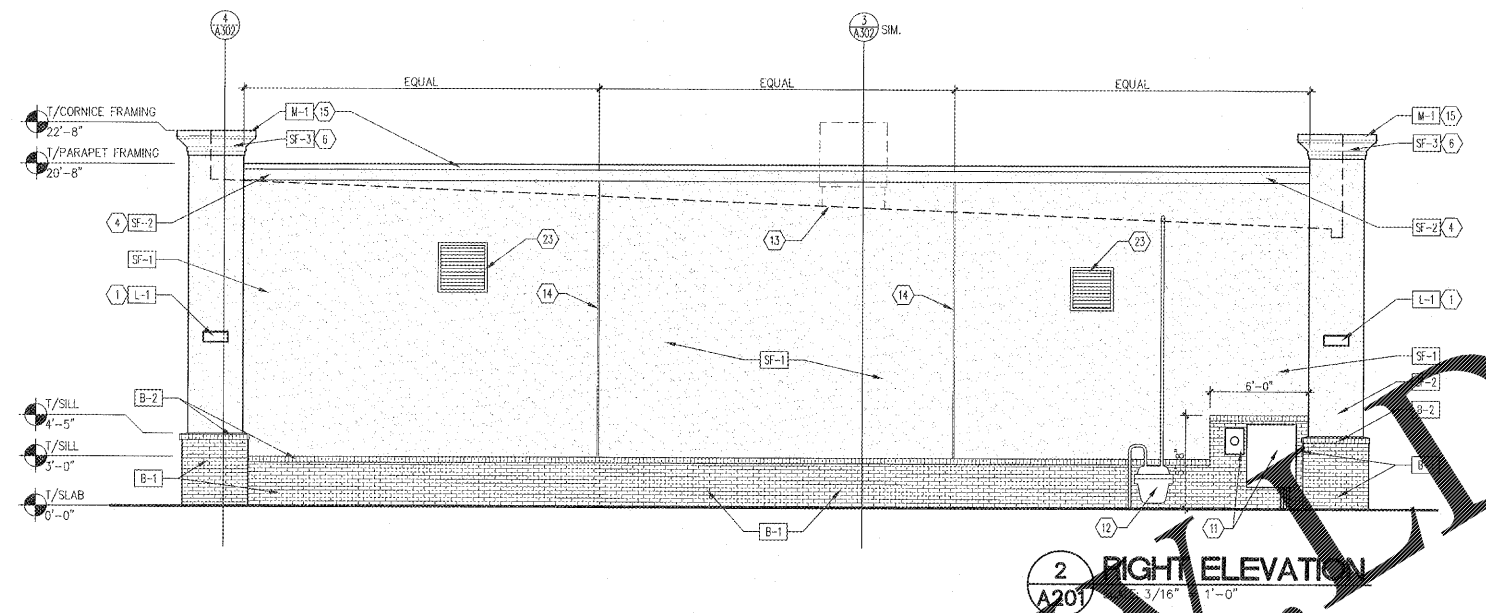


- ELEVATION NOTES:**
- DECORATIVE EXTERIOR LIGHTS- MOUNT CENTER OF FIXTURE AT 10'-3" A.F.F. - REFER TO ELECTRICAL DWGS.
  - STOREFRONT WINDOW SYSTEM SEE DOOR & WINDOW SCHEDULE FOR MORE INFORMATION.
  - EXTERIOR WALL SIGNAGE TO BE PROVIDED BY OWNER'S SIGN VENDOR. EC TO COORDINATE WITH SIGN VENDOR AND PROVIDE ELECTRICAL SUPPLY AND BLOCKING AT SIGN LOCATIONS AS REQUIRED. SEE ELEC DWGS FOR SIGN LOCATION.
  - PROJECTED STUCCO AT TOP OF PARAPET- REFER TO WALL SECTIONS & DETAILS FOR MORE INFORMATION.
  - EXTERIOR DOOR PER SCHEDULE.
  - STUCCO CORNICE REFER TO WALL SECTIONS & DETAILS FOR MORE INFORMATION.
  - ROOF ACCESS LADDER REFER TO WALL SECTIONS & DETAILS FOR MORE INFORMATION.
  - HANGER ROD CANOPY BY G.C. TO PROVIDE BLOCKING AS REQUIRED.
  - HOLLOW METAL DOOR & FRAME PAINT [P-2]
  - METAL ROLL UP DOOR & FRAME- PREFINISHED
  - ELECTRICAL EQUIPMENT. RAISE BRICK WANSOOT AT THIS AREA.
  - GAS METER- RE: PLUMBING DWGS- PROVIDE WEATHER SEAL AT PENETRATIONS INTO BUILDING.
  - LINE OF ROOF BEYOND
  - "V" GROOVE JOINT REFER TO DETAIL 16/ASO
  - METAL SNAP ON COMPRESSION EDGE
  - METAL DOWNFLOW SCUPPER WITH DECORATIVE FLANGE
  - NOT USED
  - EMERGENCY LIGHT FIXTURE MOUNT BOTTOM OF CANOPY AT 8'-0" F.F.
  - SCUPPER AND DOWNSPOUT - REFER VENDOR TO PROVIDE AND FLASH BOOT AND INTO STEEL DRAIN. REFER TO CIVIL DWGS.
  - NOT USED
  - FLASHING FOR ROOF ACCESS LADDER - COLOR TO MATCH ADJACENT FINISH.
  - KNOX BOX SERIES 3200 RECESSED WITH LIFT-OFF DOOR TO BE MOUNTED 4'-0" A.F.F. TO BOTTOM OF MOUNTING BOX. VERIFY REQUIREMENTS WITH LOCAL FIRE MARSHAL.
  - MECHANICAL LOUVER - PAINT TO MATCH [P-1]
  - TURN DOWNSPOUT AT STUCCO TO BRICK TRANSITION SO THAT DOWNSPOUT IS INSTALLED WITH 1" GAP FROM STUCCO AND BRICK.

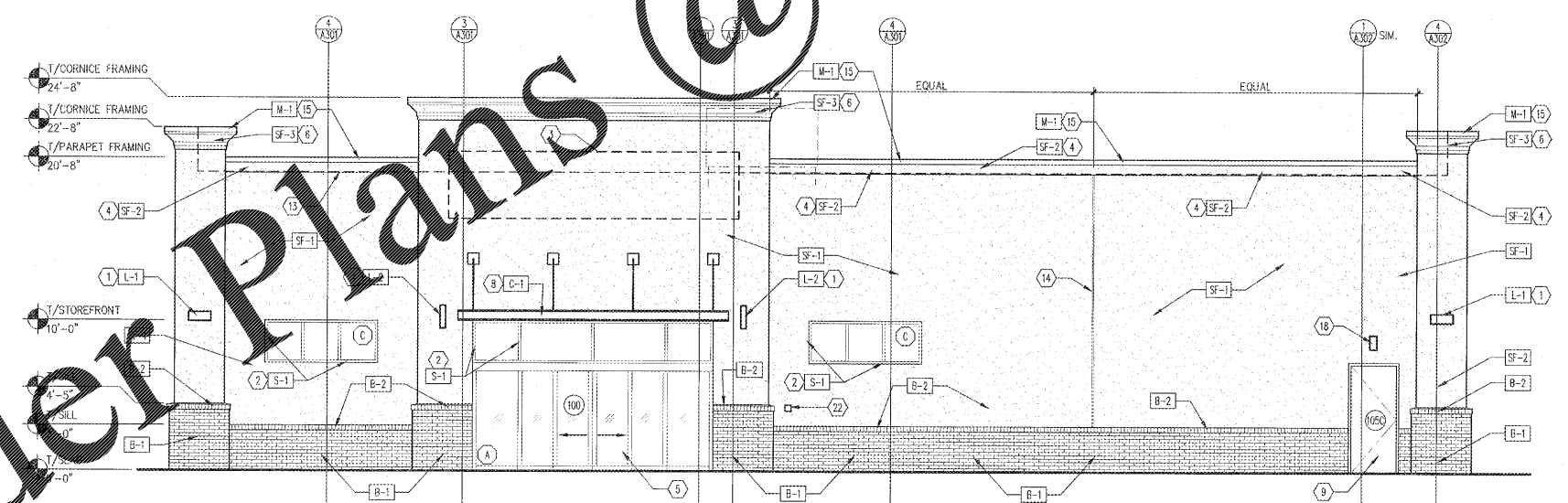
**EXTERIOR MATERIAL:**

MASONRY		
B-1	TYPE:	TRAD. BRICK WITH 3/8" JOINT
	MANUFACTURER:	PALMETTO BRICK
	COLOR:	.75 GREYSTONE
	GROUT:	LIGHT GRAY
B-2	TYPE:	ROWLOCK BRICK
	MANUFACTURER:	PALMETTO BRICK
	COLOR:	.75 GREYSTONE
	GROUT:	LIGHT GRAY
STUCCO		
SF-1	TYPE:	STUCCO
	MANUFACTURER:	DRYVIT
	COLOR:	TO MATCH SW 6141 SOFTER TAN
	STUCCO FINISH:	SMOOTH
	CONTACT:	ROBERT DAZEL, AIA
	TELEPHONE:	734-276-0404
SF-2	TYPE:	STUCCO
	MANUFACTURER:	DRYVIT
	COLOR:	TO MATCH SW 6143 BASKET BEIGE
	STUCCO FINISH:	SMOOTH
	CONTACT:	ROBERT DAZEL, AIA
	TELEPHONE:	734-276-0404
METAL		
M-1	TYPE:	2-PIECE SNAP-ON COMPRESSION EDGING
	MANUFACTURER:	EXCEPTIONAL METALS
	COLOR:	MEDIUM BRONZE
M-2	TYPE:	DOWNSPOUTS/SCUPPERS AND OVERFLOW SCUPPERS
	MANUFACTURER:	EXCEPTIONAL METALS
	COLOR:	MEDIUM BRONZE
LIGHTING		
L-1	EXTERIOR LIGHTING	
	TYPE:	UP DOWN LIGHTING WITH BRONZE FINISH
L-2	TYPE:	ACCESS LIGHT
PAINT		
P-1	TYPE:	PAINT
	MANUFACTURER:	SHERWIN WILLIAMS
	COLOR:	SW 6141 SOFTER TAN
	LOCATION:	-
P-2	TYPE:	PAINT
	MANUFACTURER:	SHERWIN WILLIAMS
	COLOR:	SW 6143 BASKET BEIGE
	LOCATION:	DOOR AND DOOR FRAMES
P-3	TYPE:	PAINT
	MANUFACTURER:	SHERWIN WILLIAMS
	COLOR:	SW 6144 DAPPER TAN
	LOCATION:	-
CANOPY / AWNING		
C-1	TYPE:	METAL CANOPY
	COLOR:	MEDIUM BRONZE
STOREFRONT		
S-1	COLOR:	MEDIUM BRONZE

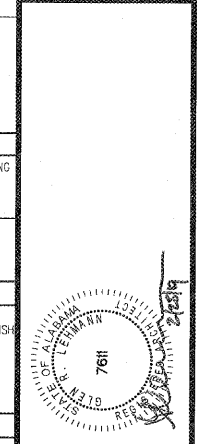
- GENERAL NOTES:**
- SUBMIT SHOP DRAWINGS TO ARCHITECT FOR APPROVAL.
  - COORD. WITH CIVIL DRAWINGS FOR GENERAL GRADING AND FINAL SURFACE ELEVATIONS.



**2 RIGHT ELEVATION**  
 A201 SCALE: 3/16" = 1'-0"



**1 FRONT ELEVATION**  
 A201 SCALE: 3/16" = 1'-0"



PROJECT: **SHERWIN WILLIAMS**  
 1860 GADSDEN HIGHWAY  
 TRUSSVILLE, AL 35235  
 DRAWING: EXTERIOR ELEVATIONS

**Revisions**

REVISION DATE

PROJECT DATE: 1/17/2019  
 Drawn By: MTP  
 Checked By: TD  
 Sheet No. **A201**

Order Plans @ [www.UWITonline.com](http://www.UWITonline.com)