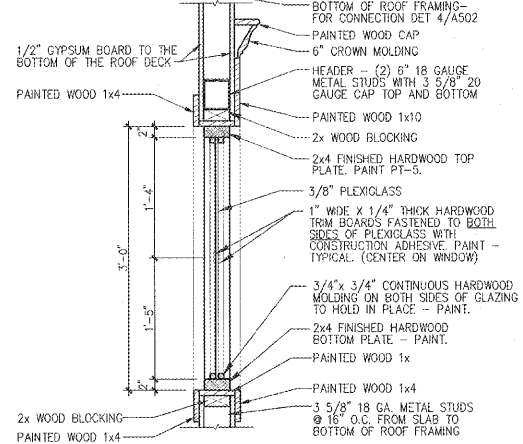


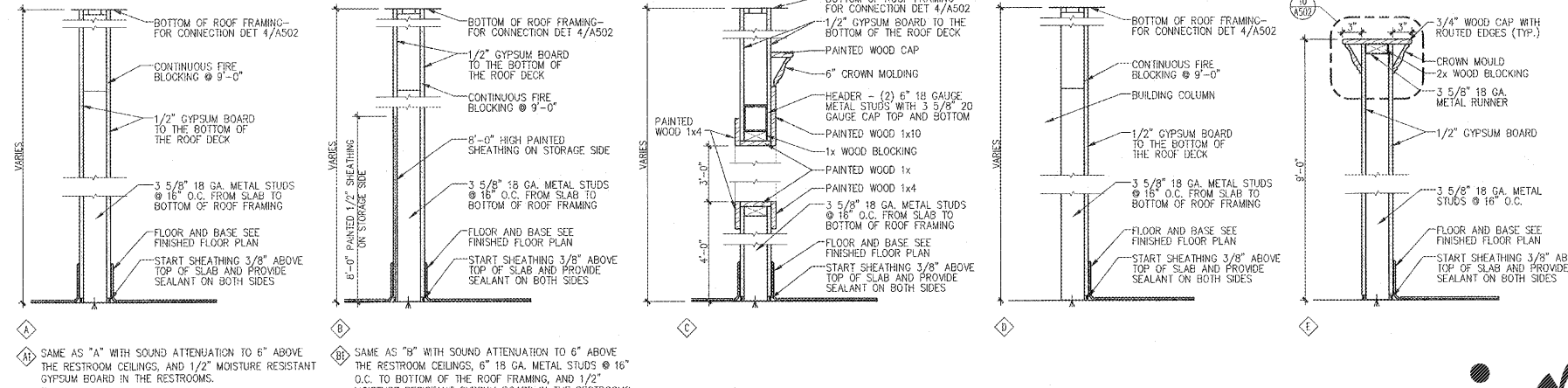
### 3 INTERIOR WINDOW DETAIL

A111 SCALE: 3/4" = 1'-0"



### 2 WALL TYPES

A111 SCALE: 1" = 1'-0"



### WALL TYPE LEGEND

- 6\"/>
- HARDCOAT STUCCO WITH BRICK VENEER WAINSCOT BELOW
- METAL STUD FRAMING - SEE GENERAL FINISH NOTES ON SHEET A131
- SOUND ATTENUATION

### DIMENSION NOTES

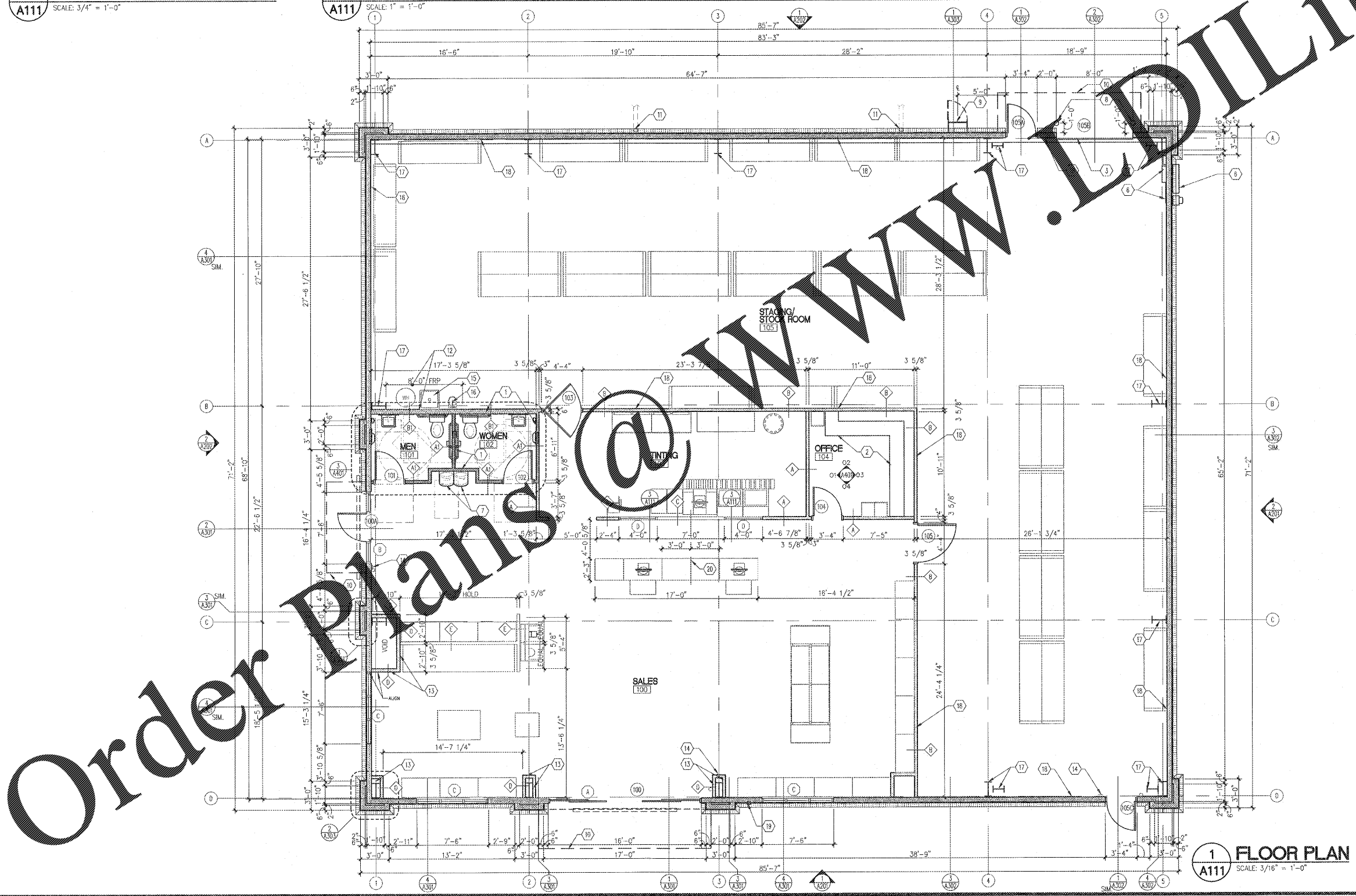
- TO FACE OF STUD
- MINIMUM DIMENSION ALLOWED (MAY BE MORE)
- MAXIMUM DIMENSION ALLOWED (MAY BE LESS)
- EXACT DISTANCE BETWEEN FINISHED SURFACES (ALL DIMENSIONS TO FACE OF FRAMING UNLESS OTHERWISE NOTED)
- TARGET DIMENSION WHICH MAY NOT BE ACHIEVED IN FIELD - BE AWARE OF POSSIBLE CHANGE

### GENERAL NOTES

- 1. FOR REFLECTED CEILING PLAN SEE DRAWING A121.
- 2. FOR DOOR & WINDOW SCHEDULE SEE DRAWING A601.
- 3. ALL INTERIOR WALLS ARE NON-BEARING.
- 4. SEE STEEL BUILDING DRAWINGS FOR ALL STRUCTURAL FRAMING.

### CONSTRUCTION NOTES

- 1. INSTALL SOUND ATTENUATION BATT. INSULATION FULL DEPTH OF WALLS FROM FLOOR TO 6\"/>
- 2. OFFICE SHELVING AND COUNTERS BY THE GENERAL CONTRACTOR - REFER TO ELEVATIONS ON DRAWING A401.
- 3. OVERHEAD ROLL UP DOOR - REFER TO DOOR SCHEDULE
- 4. NOT USED.
- 5. NOT USED.
- 6. ELECTRICAL METER AND PANELS - REFER TO ELECTRICAL SHEETS FOR EXACT LOCATION.
- 7. DOUBLE HEIGHT DRINKING FOUNTAIN. SEE 5/A401 FOR ADA DETAIL.
- 8. BOLLARD - REFER TO DETAIL 8/A502.
- 9. EXTERIOR ROOF ACCESS LADDER WITH SECURITY LOCK SEE WALL SECTION 1/A303.
- 10. LINE OF NEW OVERHEAD CANOPY PROVIDED AND INSTALLED BY G.C. PROVIDE BLOCKING AS REQUIRED PER SECTIONS.
- 11. DOWNPOUTS - REFER TO ROOF PLAN FOR EXACT LOCATIONS. PROVIDE BOOT AND HE INTO STORM SEWER - SEE CIVIL DRAWINGS.
- 12. INSTALL WHITE FRP BEHIND WATER HEATER, CAN WASH AND EYE WASHING TO 8'-0\"/>
- 13. PROVIDE 20 GAUGE 3 5/8\"/>
- 14. TACTILE EXIT SIGN - REFER TO DETAIL 4/A401.
- 15. 2'-0\"/>
- 16. EYE WASHING STATION - PROVIDED TEMPERED WATER TO EYE STATION, REFER TO PLUMBING DRAWINGS.
- 17. BUILDING COLUMN - PAINT \"AESTHETIC WHITE\". COLUMNS WILL COME WITH PRIMER FROM MANUFACTURER.
- 18. PROVIDE 8'-0\"/>
- 19. KNOX BOX SERIES 3200 RECESSED WITH LEFT-OFF DOOR TO BE MOUNTED 4'-0\"/>
- 20. POS COUNTER SHALL BE CENTERED ON WINDOW



1 FLOOR PLAN  
A111 SCALE: 3/16\"/>

WMT Project No. 19100

This drawing is the property of the architect and shall not be reproduced or used without the written permission of the architect.

INTERNET ASSOCIATION  
3008 Gadsden Highway  
Trussville, AL 35235  
Phone: 985.542.6852 Fax: 978.544.9399

STATE OF ALABAMA  
REGISTERED PROFESSIONAL ARCHITECT  
SHERWIN WILLIAMS  
7911

PROJECT: **SHERWIN WILLIAMS**  
1980 GADSDEN HIGHWAY  
TRUSSVILLE, AL 35235

DRAWING: FLOOR PLAN

Revisions	
REVISION DATE	

PROJECT DATE  
1/17/2019

Drawn By  
MTP

Checked By  
TD

Sheet No.  
A111

Order Plans @ WWW.DLLine.com