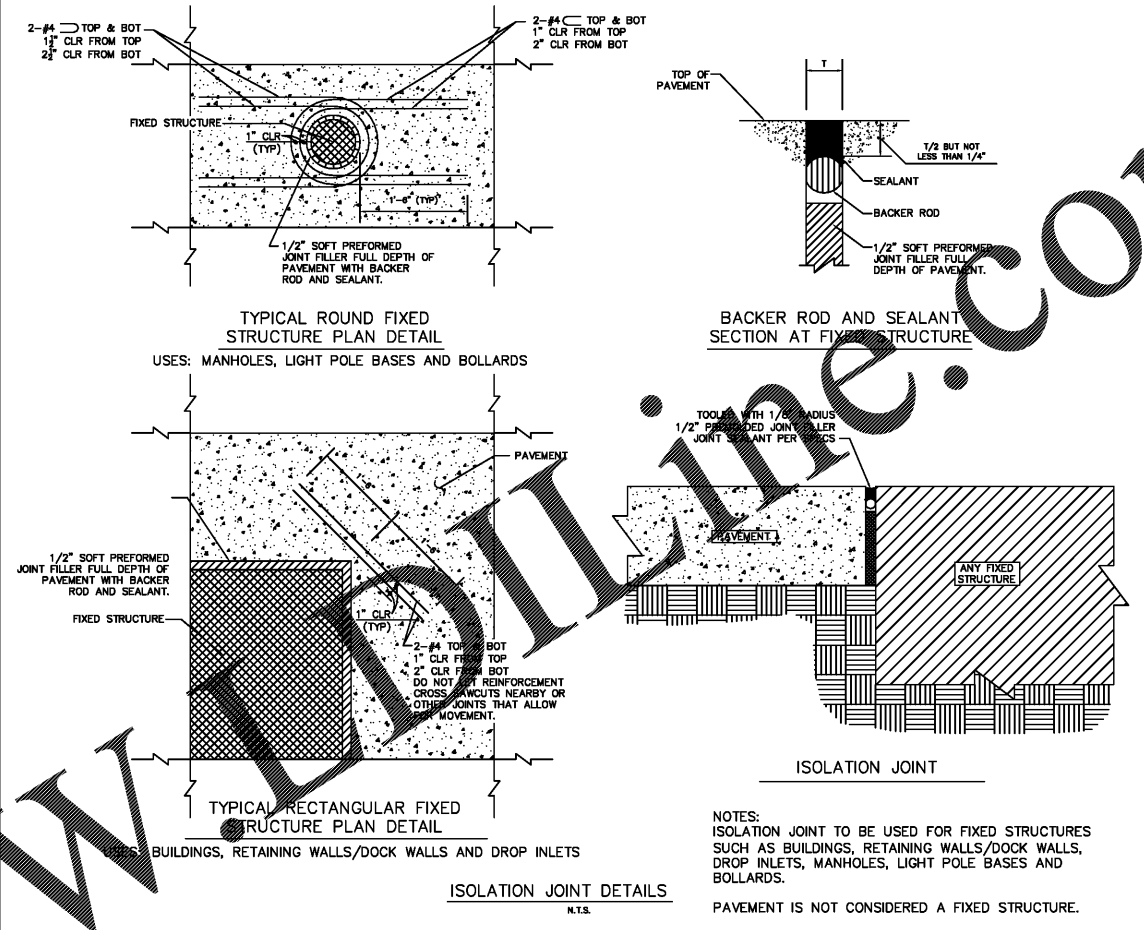
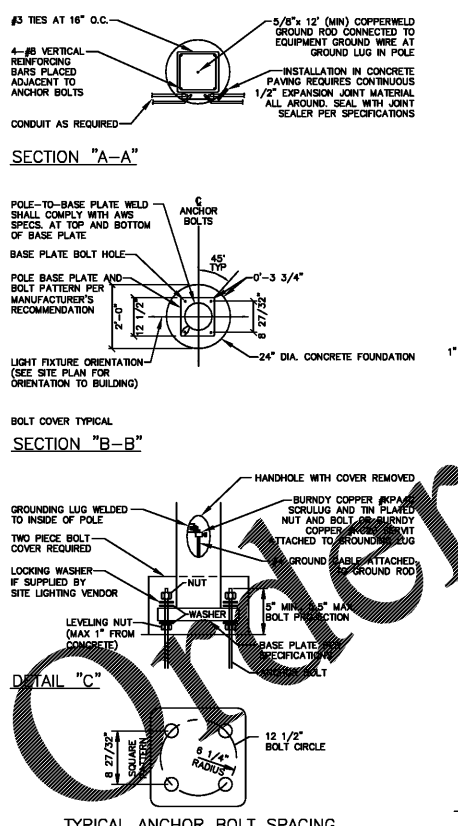


- NOTE:
1. MARKINGS FOR STREET SHALL BE ACCORDING TO LOCAL CODE REQUIREMENTS AND AS OUTLINED IN SECTION 3618 OF THE MANUAL ON UNIFORM TRAFFIC CONTROL DEVICES FOR STREETS AND HIGHWAYS.
  2. MARKINGS WITHIN PRIVATE PARKING LOT SHALL BE PER THIS DETAIL.
  3. THESE MARKINGS ARE TO BE PAINTED RETROREFLECTIVE WHITE.

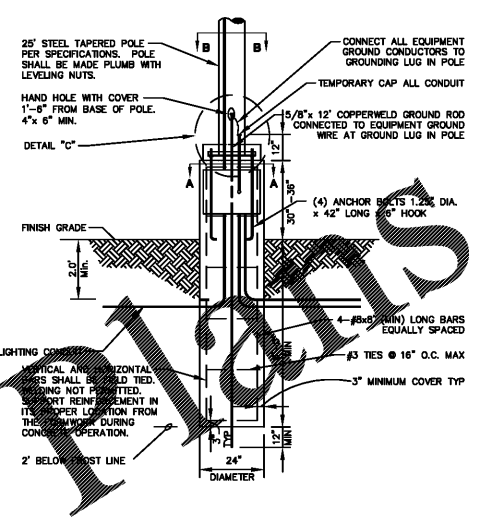
CROSSWALK MARKING  
W/ LONGITUDINAL STRIPES  
N.T.S.



- NOTES:  
ISOLATION JOINT TO BE USED FOR FIXED STRUCTURES SUCH AS BUILDINGS, RETAINING WALLS/DOCK WALLS, DROP INLETS, MANHOLES, LIGHT POLE BASES AND BOLLARDS.  
PAVEMENT IS NOT CONSIDERED A FIXED STRUCTURE.



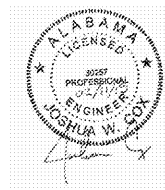
TYPICAL ANCHOR BOLT SPACING



TYPICAL LIGHTING POLE BASE DETAIL  
N.T.S.

- NOTES:
1. 3000 PSI MIN. 28 DAY COMPRESSIVE STRENGTH CONCRETE WITH GRADE 60 REINFORCING STEEL.
  2. IF WATER IS PRESENT IN HOLE, REMOVE BEFORE POURING CONCRETE.
  3. FOUNDATION EXCAVATION SHALL BE BY 24" AUGER IN UNDISTURBED OR PROPERLY COMPACTED FILL PER SPECIFICATIONS.
  4. FOUNDATION SHALL HAVE A MINIMUM ALLOWABLE END BEARING OF 2000 PSF.
  5. FOUNDATION HAS BEEN DESIGNED FOR A COHESIVE SOIL BASED ON A MINIMUM COHESIVE VALUE OF 1000 PSF.
  6. FOUNDATION HAS BEEN DESIGNED FOR A GRANULAR SOIL BASED ON A MINIMUM LATERAL SOIL PRESSURE OF 1000 PSF, UTILIZING AASHTO FIGURE 1.8.2C(4) OF "EMBEDMENT OF POSTS WITH OVERTURNING LOADS".
  7. ALL LIGHT POLE BASE FOUNDATIONS SHALL BE CAST-IN-PLACE. PRE-CAST LIGHT POLE BASE FOUNDATIONS ARE NOT ACCEPTABLE.

3471 PAVILLE ST  
DUBLIN, GA 30096  
PHONE: 404-567-5701  
FAX: 404-567-5703  
WWW.BDGSE.COM



PROPOSED COMMERCIAL DEVELOPMENT  
TRUSSVILLE, JEFFERSON COUNTY, AL

FOR: GEMCAP DEVELOPMENT  
WINSTON-SALEM, NORTH CAROLINA

REVISION	BY

DRAWN  
GDL

CHECKED  
ADB

ISSUED DATE  
2/11/2019

ISSUED FOR  
PERMIT REVIEW

PROJECT NO.  
18-188

FILE  
18-188 Details

SHEET  
D-2

SITE DETAILS

USER: gdl - Feb 14, 2019 - 8:56am  
C:\Project\Planning\Plan\Site\Department\18-188\Trussville, AL\18-188 Details.dwg - LAYOUT: D-2