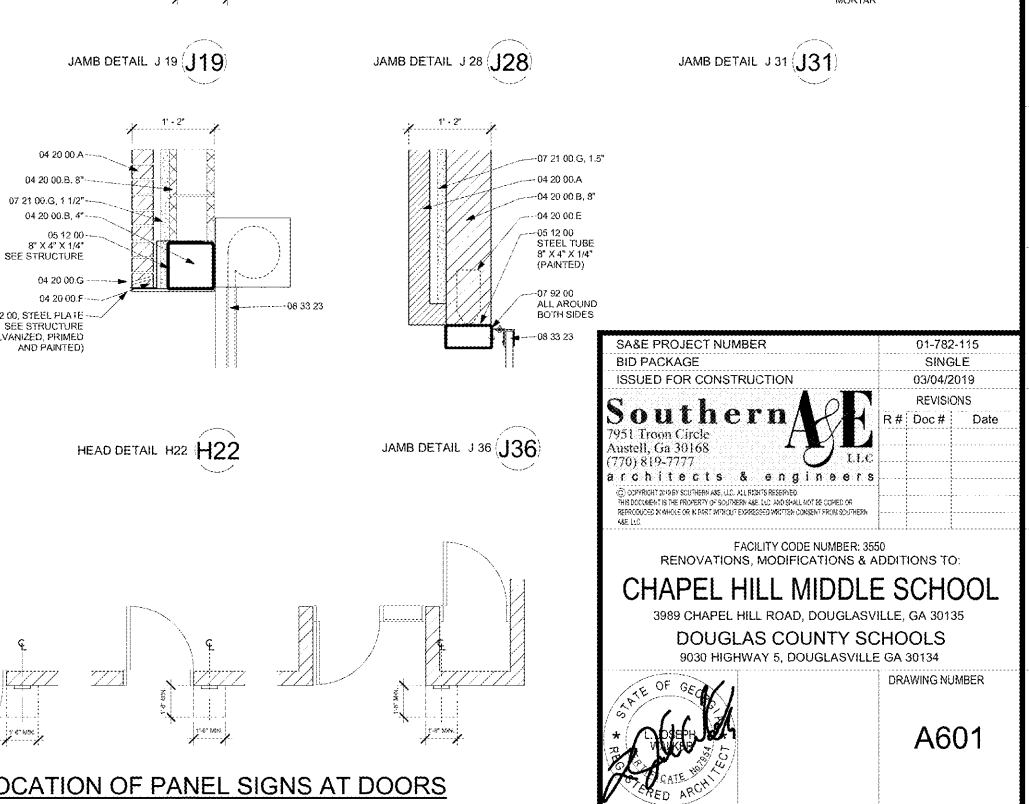
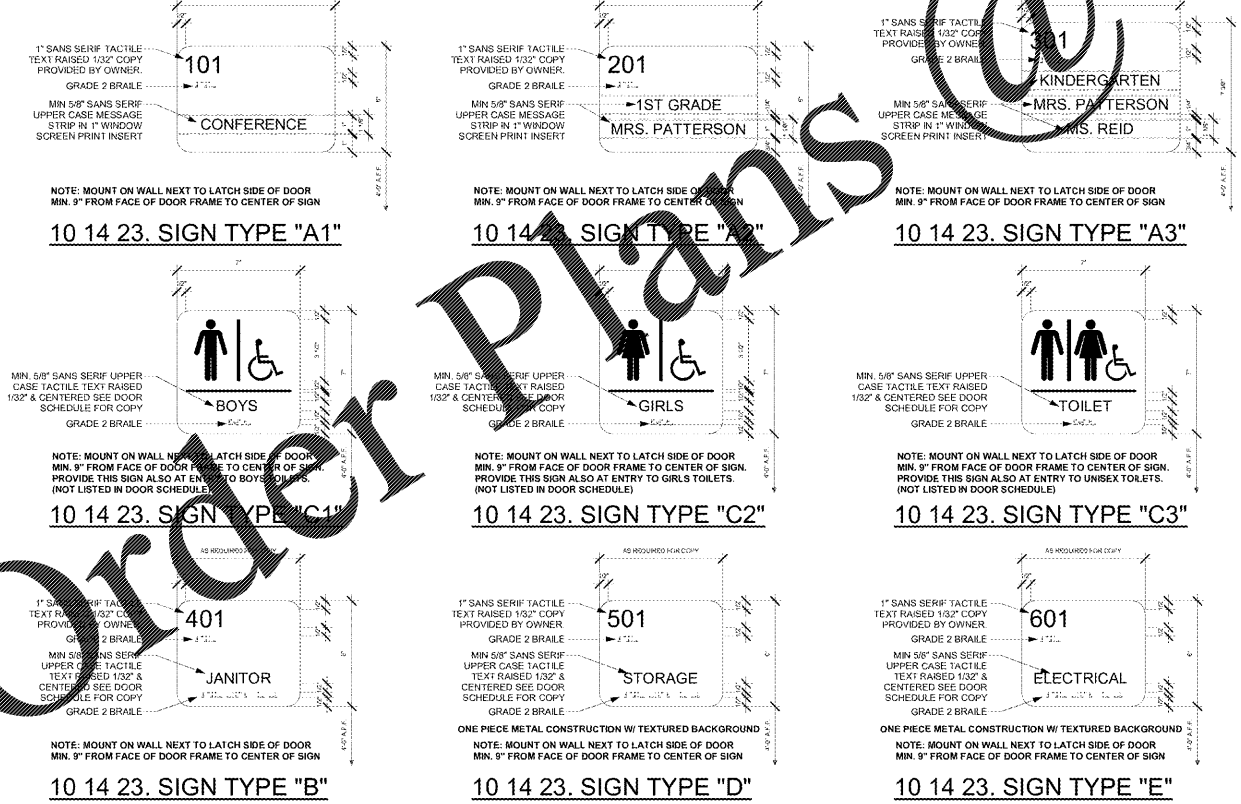
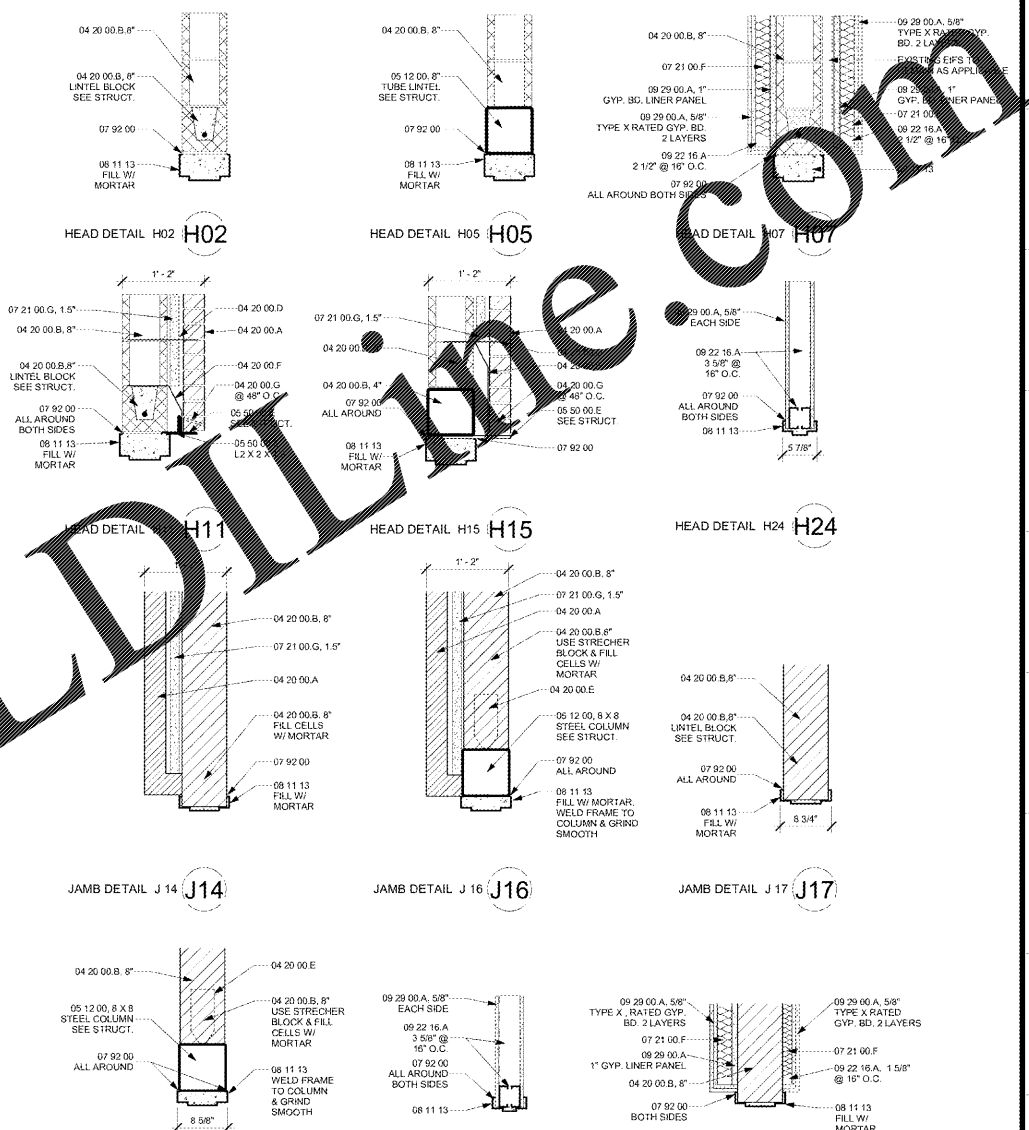


DOOR & FRAME SCHEDULE - 8TH GRADE WING

DOOR NUMBER	FRAME ELEVATION	FRAME MATERIAL	FRAME DESCRIPTION			DETAILS				DOOR DESCRIPTION				REMARKS				
			JAMB WIDTH	HEAD HEIGHT	RATED FRAME	HEAD	JAMB	THRESHOLD	SIGNAGE	STOPS	DOOR ELEVATION	DOOR MATERIAL	ELECTRICAL HARDWARE ACCESS CONTROL		DOORS CONTACTS	WIDTH	HEIGHT	PAIR
800a	F-02	HOLLOW METAL	8'3 1/4"	7'-4"		H-15	J-14	ALUMINUM						3'-0"	7'-0"	X		
800b	F-02	HOLLOW METAL	8'3 1/4"	7'-4"		H-15	J-14	ALUMINUM						3'-0"	7'-0"	X		
800c	F-02	HOLLOW METAL	8'3 1/4"	7'-4"		H-15	J-14	ALUMINUM						3'-0"	7'-0"	X		
800d	F-02	HOLLOW METAL	8'3 1/4"	7'-4"		H-15	J-14	ALUMINUM						3'-0"	7'-0"	X		
800e	F-02	EXISTING	8'3 1/4"	7'-4"				ALUMINUM						3'-0"	7'-0"	X		REPLACE EXISTING DOOR ONLY. EXISTING FRAME TO REMAIN. SAND & PAINT FRAME TO MATCH NEW.
800f	F-02	EXISTING	8'3 1/4"	7'-4"				ALUMINUM						3'-0"	7'-0"	X		REPLACE EXISTING DOOR ONLY. EXISTING FRAME TO REMAIN. SAND & PAINT FRAME TO MATCH NEW.
800g	F-12	EXISTING	8'3 1/4"	7'-4"				ALUMINUM						6'-0"	7'-0"	X		REPLACE EXISTING DOOR ONLY. EXISTING FRAME TO REMAIN. SAND & PAINT FRAME TO MATCH NEW.
801a	F-01	HOLLOW METAL	8'3 1/4"	7'-4"		H-02	J-14							3'-0"	7'-0"			
802a	F-01	HOLLOW METAL	8'3 1/4"	7'-4"		H-02	J-17	MARBLE	TYPE A-1					3'-0"	7'-0"			
803a	F-01	HOLLOW METAL	8'3 1/4"	7'-4"		H-02	J-17	MARBLE	TYPE C-3					3'-0"	7'-0"			
804a	F-01	HOLLOW METAL	8'3 1/4"	7'-4"		H-02	J-17							3'-0"	7'-0"			
805a	F-01	HOLLOW METAL	8'3 1/4"	7'-4"		H-02	J-17							3'-0"	7'-0"			
806a	F-01	HOLLOW METAL	8'3 1/4"	7'-4"		H-02	J-17	CARPET EDGE	TYPE A-2					3'-0"	7'-0"			
807a	F-01	HOLLOW METAL	8'3 1/4"	7'-4"		H-02	J-17	CARPET EDGE	TYPE A-2					3'-0"	7'-0"			
807b	F-01	HOLLOW METAL	8'3 1/4"	7'-4"		H-02	J-17							3'-0"	7'-0"			
808a	F-01	HOLLOW METAL	8'3 1/4"	7'-4"		H-02	J-17	CARPET EDGE	TYPE A-2					3'-0"	7'-0"			
808b	F-01	HOLLOW METAL	8'3 1/4"	7'-4"		H-02	J-17							3'-0"	7'-0"			
809a	F-01	HOLLOW METAL	8'3 1/4"	7'-4"		H-02	J-17	MARBLE	TYPE C-2					3'-0"	7'-0"			
810a	F-01	HOLLOW METAL	8'3 1/4"	7'-4"		H-02	J-17	MARBLE	TYPE C-1					3'-0"	7'-0"			
811a	F-01	HOLLOW METAL	8'3 1/4"	7'-4"	X	H-02	J-17	MARBLE	TYPE D					3'-0"	7'-0"			45
812a	F-01	HOLLOW METAL	8'3 1/4"	7'-4"		H-02	J-17	MARBLE	TYPE B					3'-0"	7'-0"			
813a	F-01	HOLLOW METAL	8'3 1/4"	7'-4"		H-02	J-17		TYPE A-2					3'-0"	7'-0"			
813b	F-01	HOLLOW METAL	8'3 1/4"	7'-4"		H-02	J-17		TYPE A-2					3'-0"	7'-0"			
814a	F-01	HOLLOW METAL	8'3 1/4"	7'-4"		H-02	J-17							3'-0"	7'-0"			
815a	F-01	HOLLOW METAL	8'3 1/4"	7'-4"		H-02	J-17	CARPET EDGE	TYPE A-2					3'-0"	7'-0"			
815b	F-01	HOLLOW METAL	8'3 1/4"	7'-4"		H-02	J-17							3'-0"	7'-0"			
815c	F-01	HOLLOW METAL	8'3 1/4"	7'-4"		H-02	J-17							3'-0"	7'-0"			
816a	F-01	HOLLOW METAL	8'3 1/4"	7'-4"		H-02	J-17							3'-0"	7'-0"			
817a	F-01	HOLLOW METAL	8'3 1/4"	7'-4"		H-02	J-17	CARPET EDGE	TYPE A-2					3'-0"	7'-0"			
817b	F-01	HOLLOW METAL	8'3 1/4"	7'-4"		H-02	J-17							3'-0"	7'-0"			
817c	F-01	HOLLOW METAL	8'3 1/4"	7'-4"		H-02	J-17							3'-0"	7'-0"			
818a	F-01	HOLLOW METAL	8'3 1/4"	7'-4"		H-02	J-17	CARPET EDGE	TYPE A-2					3'-0"	7'-0"			
818b	F-01	HOLLOW METAL	8'3 1/4"	7'-4"		H-02	J-14							3'-0"	7'-0"			
820a	F-01	HOLLOW METAL	8'3 1/4"	7'-4"		H-02	J-17							3'-0"	7'-0"			
820b	F-01	HOLLOW METAL	8'3 1/4"	7'-4"		H-02	J-17		TYPE A-2					3'-0"	7'-0"			
821a	F-01	HOLLOW METAL	8'3 1/4"	7'-4"	X	H-02	J-17	MARBLE	TYPE D					3'-0"	7'-0"			45
822a	F-01	HOLLOW METAL	8'3 1/4"	7'-4"		H-02	J-17	MARBLE	TYPE C-1					3'-0"	7'-0"			
823a	F-01	HOLLOW METAL	8'3 1/4"	7'-4"		H-02	J-17	MARBLE	TYPE A-2					3'-0"	7'-0"			
824a	F-01	HOLLOW METAL	8'3 1/4"	7'-4"		H-02	J-17	MARBLE	TYPE C-2					3'-0"	7'-0"			
825a	F-01	HOLLOW METAL	8'3 1/4"	7'-4"		H-02	J-17	CARPET EDGE	TYPE A-2					3'-0"	7'-0"			
826a	F-01	HOLLOW METAL	8'3 1/4"	7'-4"		H-02	J-17							3'-0"	7'-0"			
826b	F-01	HOLLOW METAL	8'3 1/4"	7'-4"		H-02	J-17	CARPET EDGE	TYPE A-2					3'-0"	7'-0"			
827a	F-01	HOLLOW METAL	8'3 1/4"	7'-4"		H-02	J-17	CARPET EDGE	TYPE A-2					3'-0"	7'-0"			
827b	F-01	HOLLOW METAL	8'3 1/4"	7'-4"		H-02	J-17							3'-0"	7'-0"			
828a	F-01	HOLLOW METAL	8'3 1/4"	7'-4"		H-02	J-17		TYPE F					3'-0"	7'-0"			
828b	F-01	HOLLOW METAL	8'3 1/4"	7'-4"		H-11	J-14	ALUMINUM						3'-0"	7'-0"			
831a	F-08	HOLLOW METAL	8'3 1/4"	7'-4"		H-15	J-14	ALUMINUM						3'-0"	7'-0"	X		
831b	F-08	HOLLOW METAL	8'3 1/4"	7'-4"		H-15	J-14	ALUMINUM						3'-0"	7'-0"	X		
833a	F-02	HOLLOW METAL	8'3 1/4"	7'-4"		H-15	J-14	ALUMINUM						3'-0"	7'-0"	X		
833b	F-08	HOLLOW METAL	8'3 1/4"	7'-4"		H-15	J-14	ALUMINUM						3'-0"	7'-0"	X		
900a	F-02	HOLLOW METAL	8'3 1/4"	7'-4"	X	H-11	J-14	ALUMINUM						3'-0"	7'-0"	X		90
900b		STEEL		10'-0"		H-22	J-36	ALUMINUM						10'-0"	10'-0"			
900c	F-02	HOLLOW METAL	8'3 1/4"	7'-4"		H-11	J-14	ALUMINUM						3'-0"	7'-0"	X		



SASE PROJECT NUMBER: 01-782-115
 BID PACKAGE: SINGLE
 ISSUED FOR CONSTRUCTION: 03/04/2019
Southern A&E
 Architects & Engineers
 7951 Troon Circle
 Austell, GA 30168
 (770) 819-7777
 FACILITY CODE NUMBER: 3550
 RENOVATIONS, MODIFICATIONS & ADDITIONS TO:
CHAPEL HILL MIDDLE SCHOOL
 3989 CHAPEL HILL ROAD, DOUGLASVILLE, GA 30135
 DOUGLAS COUNTY SCHOOLS
 9030 HIGHWAY 5, DOUGLASVILLE GA 30134
 DRAWING NUMBER: **A601**