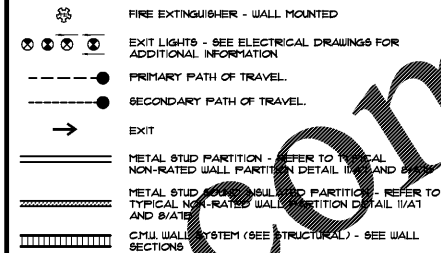


**GENERAL NOTES**

- ACCESS TO THESE FACILITIES SHALL BE PROVIDED AT PRIMARY ENTRANCES.
  - THE SLOPE OF PUBLIC WALKS SHALL NOT EXCEED MAX. - GROSS SLOPE 2%.
  - WALKING SURFACE SLOPING GREATER THAN 2% SHALL BE SLIP RESISTANT.
  - PROVIDE A 60" x 60" MIN. LANDINGS ON STRIKE SIDE OF DOOR WITH 44" MIN. WIDTH IN DIRECTION OF TRAVEL.
  - WALKS SHALL EXTEND 24" TO THE SIDE OF THE STRIKE EDGE OF A DOOR OR GATE THAT SWINGS TOWARD THE WALK.
  - EVERY REQUIRED EXIT DOORWAY SHALL BE SIZED FOR A DOOR NOT LESS THAN 3 FT. WIDE BY NOT LESS THAN 6'-8" HIGH CAPABLE OF OPENING 90° AND MOUNTED SO THAT THE CLEAR WIDTH OF THE EXIT WAY IS 32" MIN.
  - THRESHOLD TO BE A MAX. 1/2" ABOVE ADJACENT FINISH FLOOR.
  - MAXIMUM EFFORT TO OPERATE DOORS SHALL NOT EXCEED 5 LBS.
  - THE BOTTOM 18" OF ALL DOORS EXCEPT AUTOMATIC AND SLIDING SHALL HAVE A SMOOTH UNINTERRUPTED SURFACE.
  - PROVIDE LEVER TYPE HARDWARE, PANIC BARS, PUSH - PULL ACTIVATING BARS, OR OTHER HARDWARE DESIGNED TO PROVIDE PASSAGE WITHOUT REQUIRING THE ABILITY TO GRASP THE OPENING HARDWARE. (36" TO 44" AFF.)
  - EVERY EXIT DOOR SHALL BE OPERABLE FROM THE INSIDE WITHOUT THE USE OF A KEY OR SPECIAL KNOWLEDGE OR EFFORT, FLUSH OR SURFACE BOLTS SHALL BE AUTOMATIC TYPE. LOCKABLE DOORS SHALL BE PROVIDED WITH A SIGN STATING "THESE DOORS TO REMAIN UNLOCKED DURING BUSINESS HOURS" IN MIN. 1" HIGH LETTERS.
  - EXIT SIGNS WHERE NOTED OR REQUIRED SHALL BE PLACED "EXIT" IN AND LETTERS HAVING THE PRINCIPAL STROKE OF NOT LESS THAN 3/4" WIDE AND 6" HIGH AND SHALL CONFORM TO ALL APPLICABLE CODES.
  - PROVIDE ILLUMINATED EXIT SIGNS AND EMERGENCY LIGHTING AT ALL EXIT CORRIDORS AS REQUIRED BY CODE. EMERGENCY LIGHTING SHALL PROVIDE ILLUMINATION OF ONE FOOT-CANDLE AT FLOOR LEVEL.
  - THE MAXIMUM EFFORT TO OPERATE FIRE-RATED DOORS SHALL NOT EXCEED 5 LBS. FOR INTERIORS, AND 9 LBS. FOR EXTERIORS.
- SEE ELECTRICAL DRAWINGS FOR ALL FIRE ALARM DEVICES AND EQUIPMENT.

**LIFE SAFETY LEGEND**



**LIFE SAFETY SUMMARY**

**APPLICABLE CODES & STANDARDS:**

- THE FLORIDA BUILDING CODE: SIXTH EDITION (2011)
- ACCESSIBILITY
- BUILDING
- ENERGY CONSERVATION
- EXISTING BUILDING
- FUEL GAS
- MECHANICAL
- PLUMBING
- TEST PROTOCOLS FOR HIGH VELOCITY HURRICANE ZONES
- FLORIDA FIRE PREVENTION CODE: SIXTH EDITION
- NFPA 101: LIFE SAFETY CODE FLORIDA 2011 EDITION
- NFPA 70: NATIONAL ELECTRICAL CODE 2014 EDITION
- 2010 ADA STANDARDS FOR ACCESSIBLE DESIGN

**CONSTRUCTION TYPE:**

FBC - BUILDING, CHAPTER 6: TYPE V-B, UNSPRINKLERED  
NFPA - MERCANTILE

**OCCUPANCY:**

FBC - BUILDING, SECTION 309: MERCANTILE - GROUP M

**FIRE PROTECTION:**

BUILDING IS UNSPRINKLERED

REVISIONS	BY

**OLIVERI ARCHITECTS**  
Member of the American Institute of Architects  
32707 US Hwy. 19 • Palm Harbor, FL 34684  
Phone 727 781 7525 • Fax 727 781 9923  
www.oliveriarchitects.com

© 2015 OLIVERI ARCHITECTS, INC.  
ALL RIGHTS RESERVED. THIS PLAN IS THE PROPERTY OF OLIVERI ARCHITECTS, INC. AND IS NOT TO BE REPRODUCED OR TRANSMITTED IN ANY FORM OR BY ANY MEANS, ELECTRONIC OR MECHANICAL, WITHOUT PERMISSION IN WRITING FROM OLIVERI ARCHITECTS, INC.

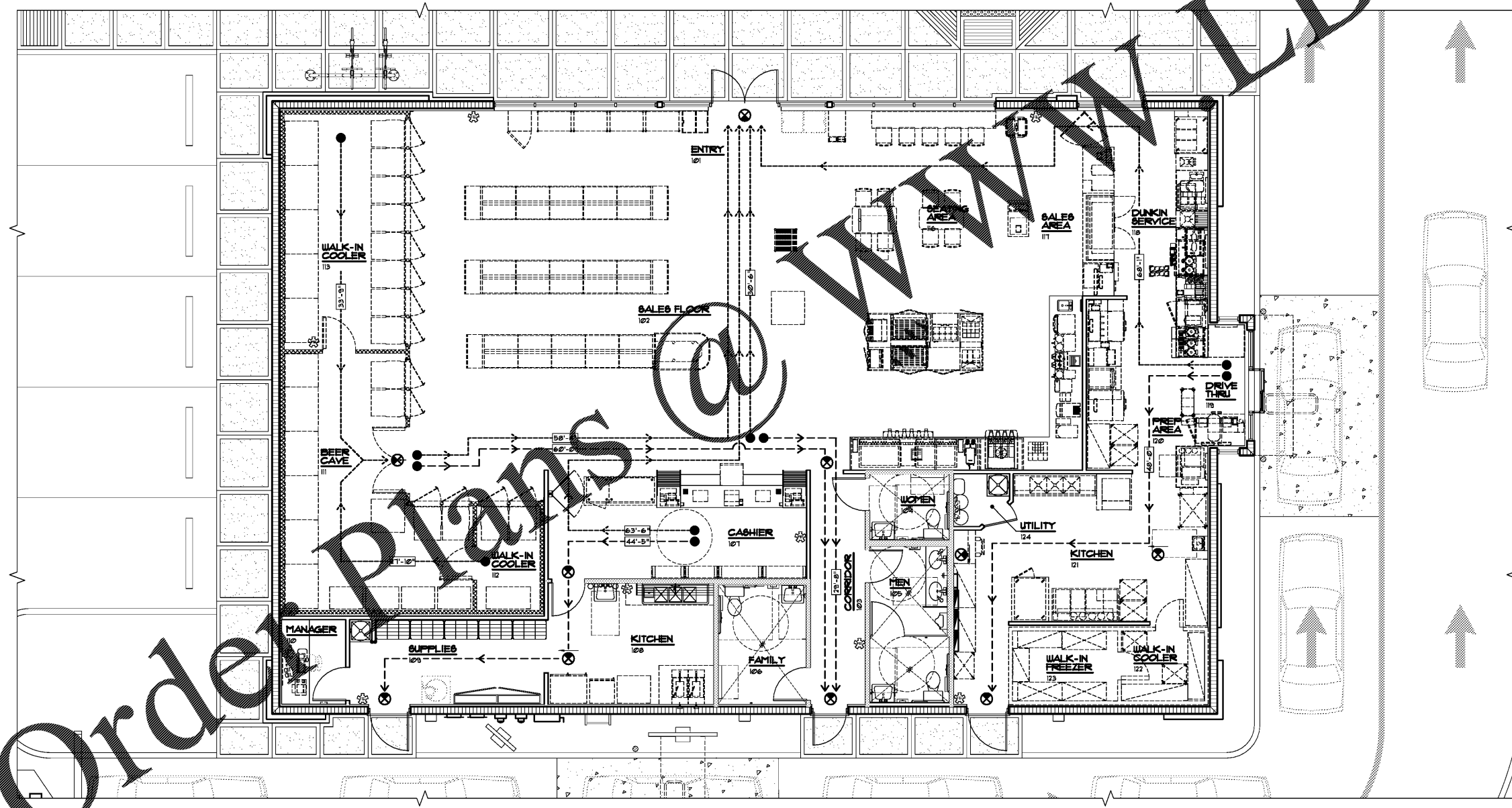


Joseph L. Oliveri, AIA  
State of Florida  
License #A00114208

New Free Standing  
**RETAIL BUILDING**  
**CIRCLE K & DUNKIN' DONUTS**  
2851 Thonotosassa Rd.  
Plant City, Florida 33565  
Hillsborough County

Date: 01.25.19  
Scale: AS NOTED  
Project Mgr: AAY  
Drawn: JDS  
Job: 18-085

Sheet  
**LS1**



**1 LIFE SAFETY PLAN**  
SCALE: 3/16" = 1'-0"

4164 02GT