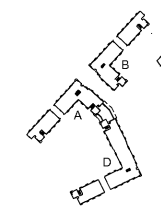
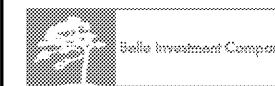




NoDa Philemon Road
Community

PHILEMON ROAD
CHARLOTTE, NORTH CAROLINA



KEY PLAN



REVISION	DATE	DESCRIPTION
4	11/30/2018	ADDENDUM 4
3	10/29/2018	ADDENDUM 3
1	10/19/2016	ADDENDUM 1 - CODE COMMENTS

ADDENDA OR MODIFICATION		
CD	DATE	CONTRACT DOCUMENTS
ISSUE	DATE	DESCRIPTION

FULL SET ISSUES		
-----------------	--	--

PROJECT NO: 4068-001
P.I.C. JM SYNDER
P.MGR. CAROLYN ENTZINGER
P.ARCH. BRAD BARTHOLOMEW
DESIGN BY
JOB CAPTAIN
DRAWN BY Author
CHECKED BY Checker

ODELL ASSOCIATES INC © 2016

SHEET TITLE

BUILDING D -
FOURTH FLOOR -
SEGMENT B -
ELECTRICAL

SHEET IDENTIFIER

E204-D-b

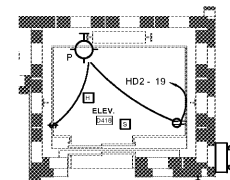


KEY NOTES:

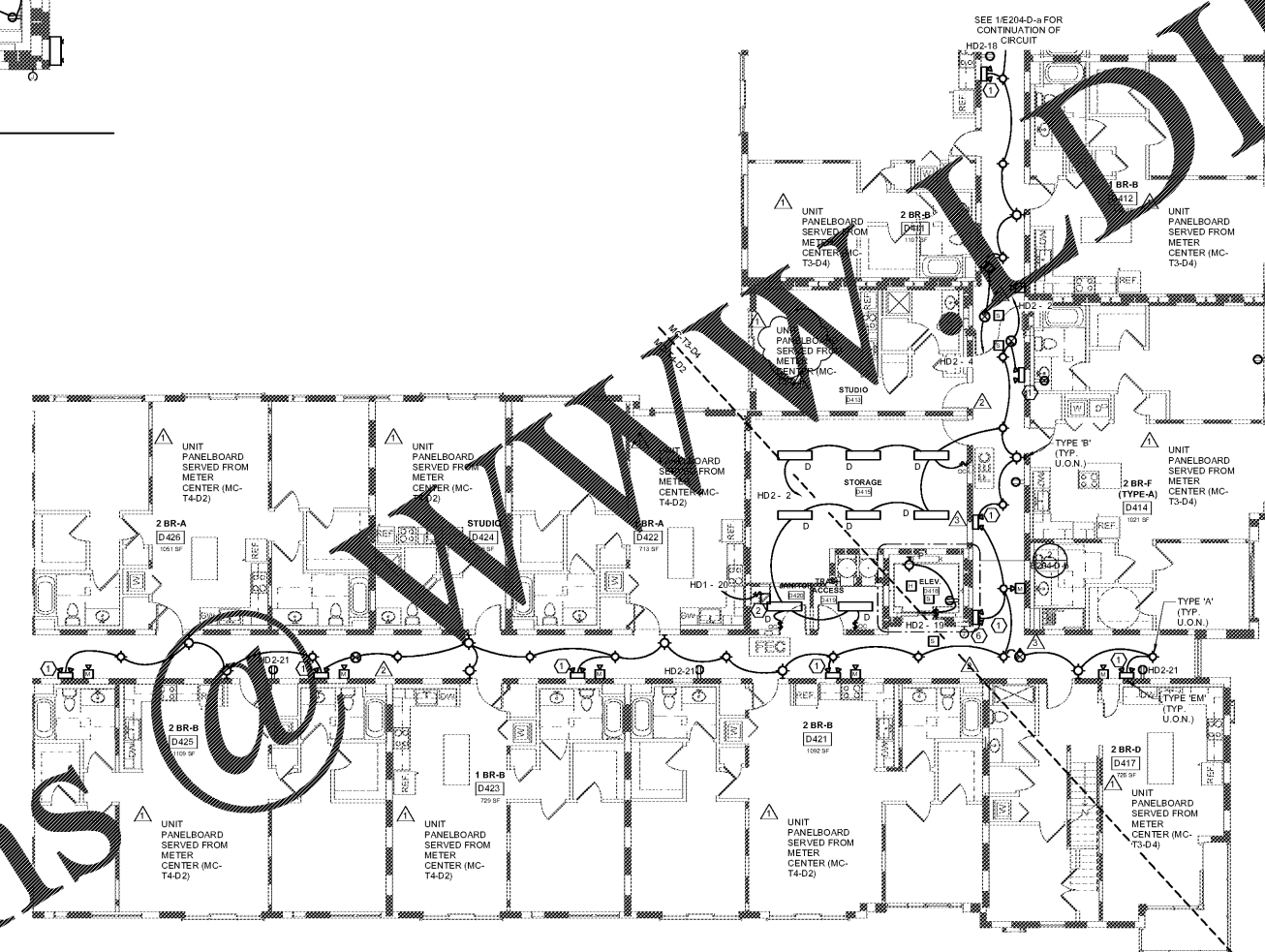
- ① CONNECT EXIT SIGNS AND EMERGENCY EGRESS LUMINAIRES AHEAD OF LOCAL AREA SWITCHING. CONNECT LUMINAIRES TO UNSWITCHED LEG OF LIGHTING CIRCUIT.
- ② PROVIDE 120V, 20A/1P, MOTOR RATED SWITCH FOR CONNECTION OF EXHAUST FAN. CONNECT USING 2#12, 1#12G, IN 1/2" C.
- ③ NOT USED.
- ④ PROVIDE 208V, 30A/2P, HEAVY DUTY FUSED DISCONNECT SWITCH, FUSED AT 20 AMPS. UTILIZE ONE (1) POLE OF THE TWO (2) POLE DISCONNECT SWITCH FOR CONNECTION OF ELEVATOR CONTROLS.
- ⑤ NOT USED.
- ⑥ PROVIDE DOUBLE GANG JUNCTION BOX FOR TWO-WAY COMMUNICATION SYSTEM AUDIO EQUIPMENT. COORDINATE JUNCTION BOX SIZE AND ALL CONDUIT REQUIREMENTS WITH THE TWO-WAY COMMUNICATION SYSTEM MANUFACTURER. VERIFY LOCATION AND MOUNTING HEIGHT OF TWO-WAY COMMUNICATION SYSTEM WITH THE ARCHITECT PRIOR TO ROUGH-IN.

GENERAL NOTES:

- A. COORDINATE LOCATION, MOUNTING HEIGHT, AND TERMINATION OF MECHANICAL EQUIPMENT WITH THE MECHANICAL CONTRACTOR PRIOR TO ROUGH-IN.
- B. COORDINATE LOCATION, MOUNTING HEIGHT, AND TERMINATION OF PLUMBING EQUIPMENT WITH THE PLUMBING CONTRACTOR PRIOR TO ROUGH-IN.
- C. COORDINATE LOCATION, MOUNTING HEIGHT AND TERMINATION OF ELEVATOR EQUIPMENT WITH THE GENERAL CONTRACTOR PRIOR TO ROUGH-IN.



2 ELEV. D148
SCALE 1/4" = 1'-0"



1 FOURTH FLOOR PLAN - BUILDING D - ELECTRICAL - SEGMENT B
SCALE 1/8" = 1'-0"



McVEIGH & MANGUM
ENGINEERING - INC
9133 R.O. Sasser Parkway
Raleigh, NC 27615
CA 6330 Pk (919) 863-2000 Fax: (919) 858-6700
www.mveng.com
Reg. of Record: John C. Cassidy License No. 28726

Order Plans @ www.DLine.com

11/20/2018 10:47 AM 11/16/2018 10:47 AM 11/16/2018 10:47 AM 11/16/2018 10:47 AM