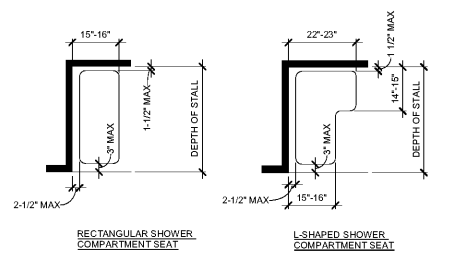
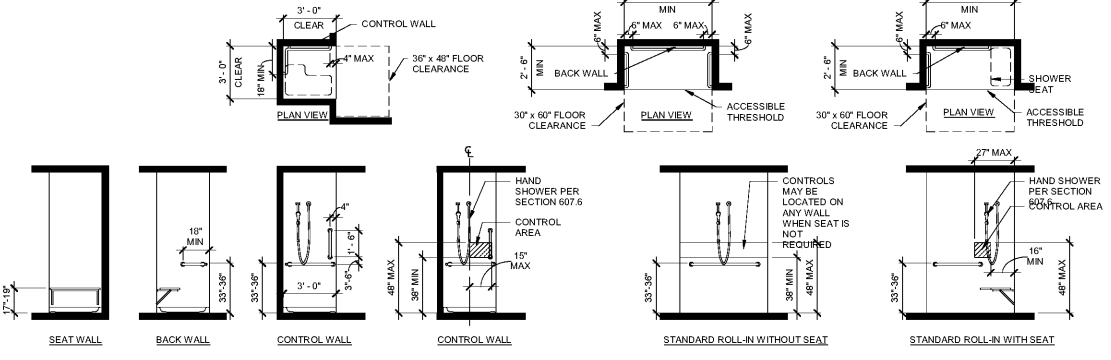


THE AMERICAN NATIONAL STANDARDS INSTITUTE (ANSI) - 2009 - MOUNTING HEIGHTS AND DESIGN CRITERIA

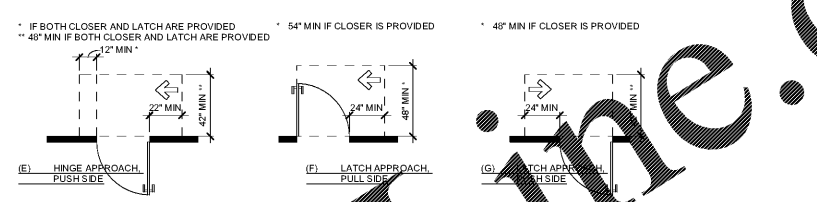
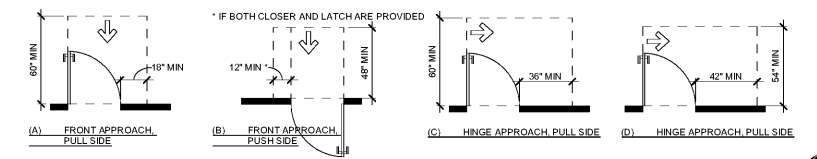
D
C
B
A



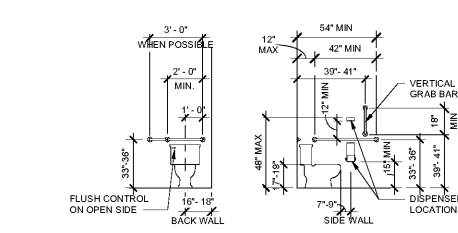
SHOWER SEAT DESIGN
STRUCTURAL STRENGTH: ANY COMPONENT OF SEAT SYSTEM MUST WITHSTAND VERTICAL OR HORIZONTAL FORCE OF 250 POUNDS PER ANSI A117.1 SECTION 610.4.



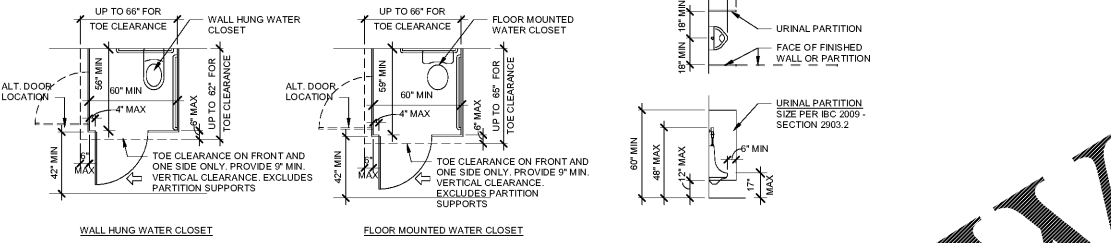
GRAB BARS & CONTROLS @ TRANSFER TYPE SHOWERS **STANDARD ROLL-IN TYPE SHOWER CONTROL AND HANDSHOWER LOCATION**



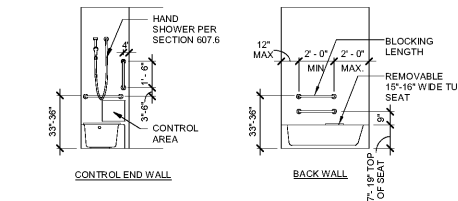
MANEUVERING CLEARANCE AT MANUAL SWINGING DOORS **MANEUVERING CLEARANCE AT RECESSED DOORS**



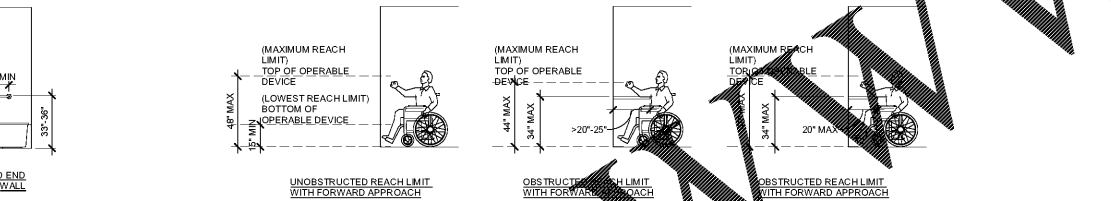
GRAB BARS @ WATER CLOSETS AND DISPENSER LOCATIONS



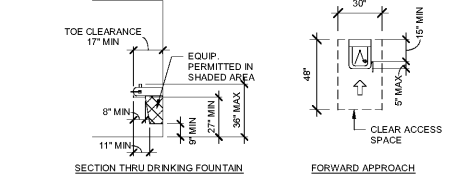
WHEELCHAIR ACCESSIBLE TOILET COMPARTMENTS **URINAL & PARTITION REQUIREMENTS**



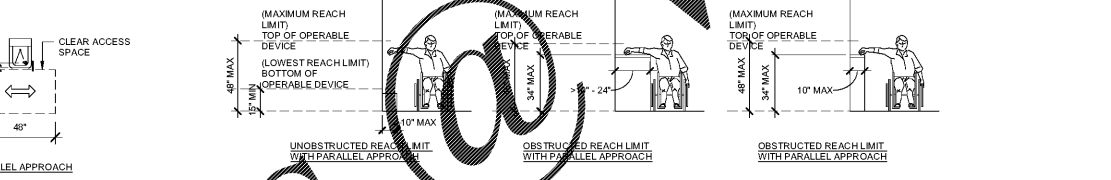
GRAB BARS AT TUBS



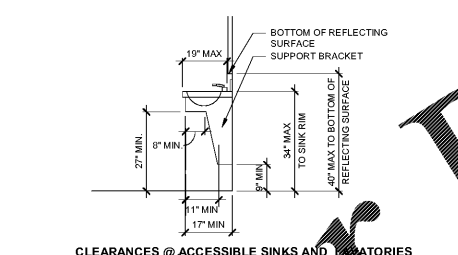
ACCESSIBLE MOUNTING HEIGHTS / REACH RANGE



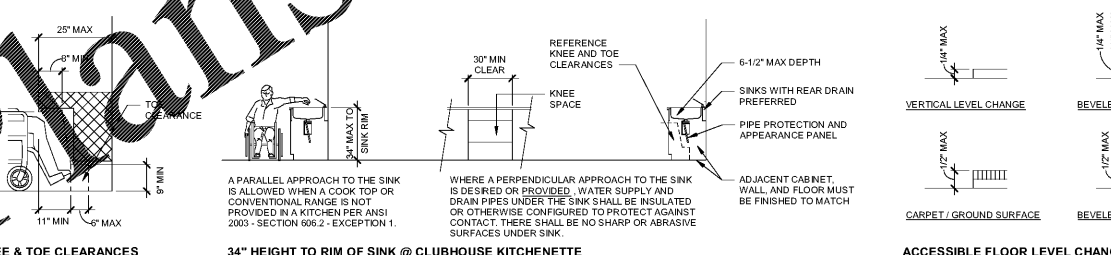
CLEARANCES @ DRINKING FOUNTAINS



ACCESSIBLE FLOOR LEVEL CHANGES



CLEARANCES @ ACCESSIBLE SINKS AND LABORATORIES



KNEE & TOE CLEARANCES **34\"/>**

NOTE: WATER SUPPLY AND DRAIN PIPES UNDER THE SINK SHALL BE INSULATED OR OTHERWISE CONFIGURED TO PROTECT AGAINST CONTACT. THERE SHALL BE NO SHARP OR ABRASIVE SURFACES UNDER SINK.

NOTE: THERE SHALL BE NO SHARP OR ABRASIVE SURFACES UNDER SINK. CONFIGURE TO PROTECT AGAINST CONTACT OR TO PROTECT FROM BURNS, ABRASIONS, OR ELECTRICAL SHOCK.

Order Plans



NoDa - Philemon Road
PHILEMON ROAD
CHARLOTTE, NORTH CAROLINA

REVISION	DATE	ADDENDUM	DESCRIPTION
2	09/10/2018	ADDENDUM 02	
ADDENDA OR MODIFICATION			
CD	08/17/2016	CONTRACT DOCUMENTS	
ISSUE	DATE	DESCRIPTION	
FULL SET ISSUES			

PROJECT NO: 4068-001
P.I.C.: BRAD BARTHOLOMEW
P.MGR.: MICHAEL MONTGOMERY
P.ARCH.:
DESIGN BY: BRAD BARTHOLOMEW
JOB CAPTAIN:
DRAWN BY: Author
CHECKED BY: Checker

ODELL ASSOCIATES INC © 2016
SHEET TITLE
ANSI MOUNTING HEIGHTS AND DESIGN CRITERIA

SHEET NUMBER
GL-200 NEW SHEET