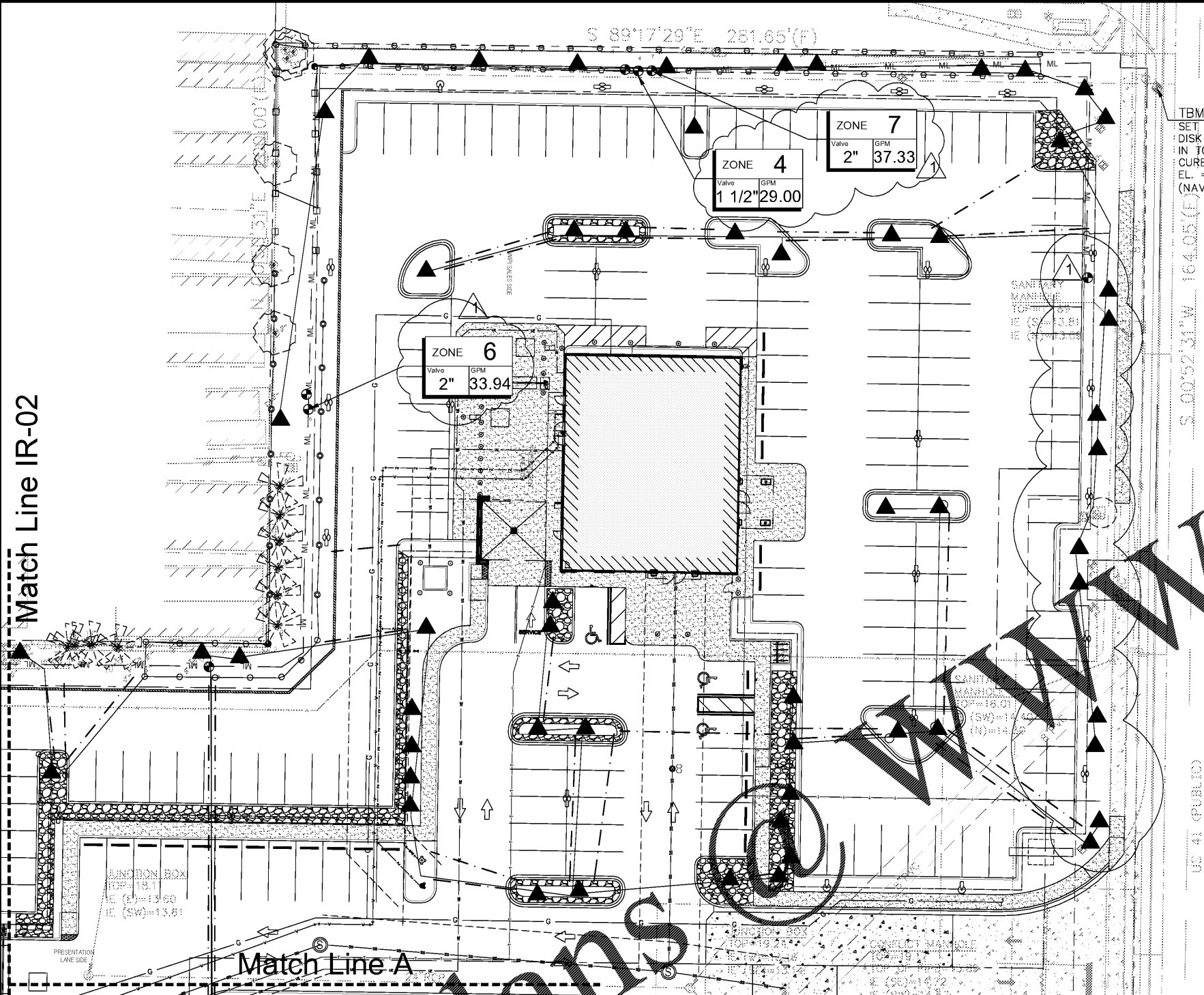
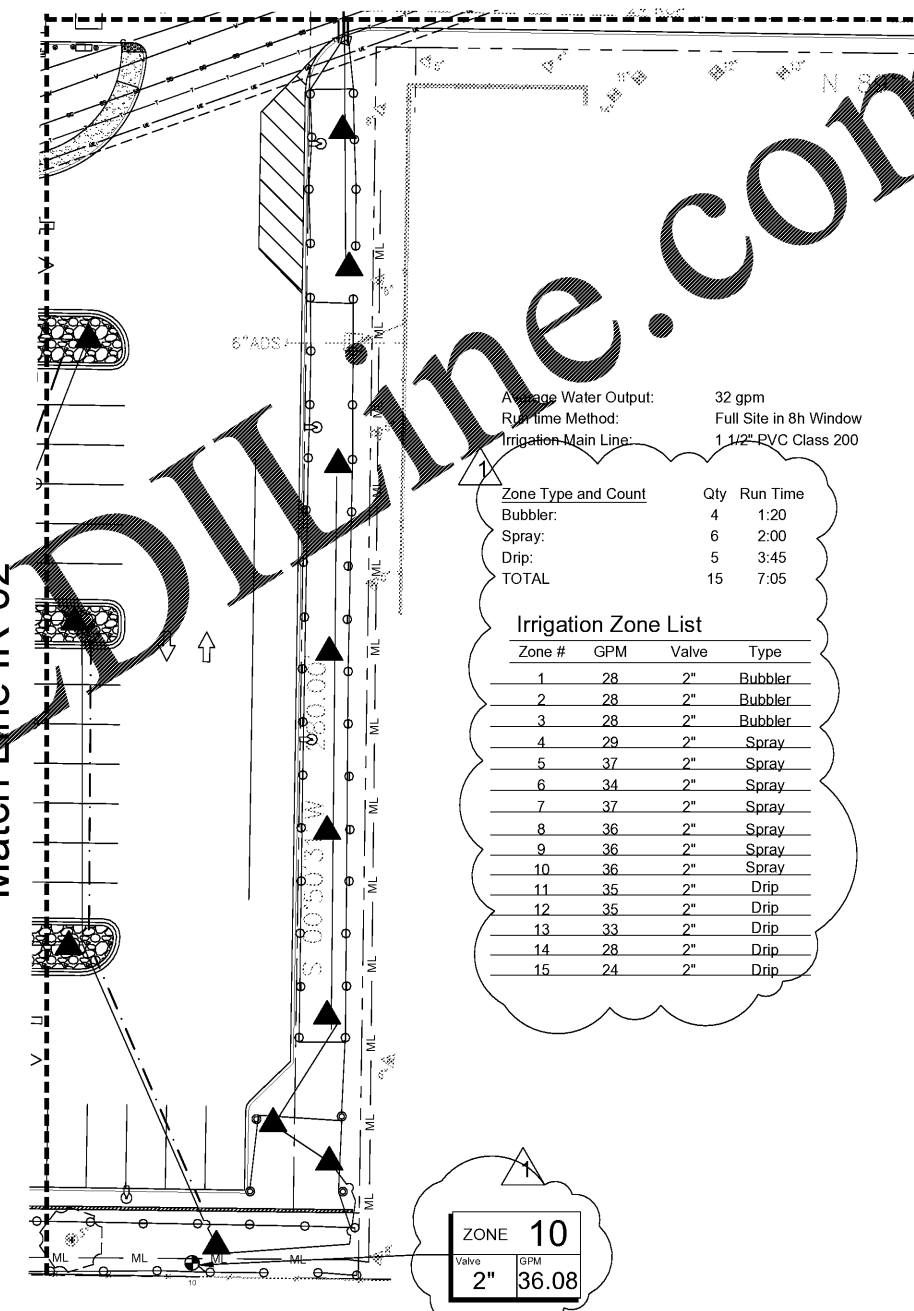


Match Line IR-02



Match Line A



Average Water Output: 32 gpm
 Run Time Method: Full Site in 8h Window
 Irrigation Main Line: 1 1/2" PVC Class 200

Zone Type and Count	Qty	Run Time
Bubbler:	4	1:20
Spray:	6	2:00
Drip:	5	3:45
TOTAL	15	7:05

Irrigation Zone List

Zone #	GPM	Valve	Type
1	28	2"	Bubbler
2	28	2"	Bubbler
3	28	2"	Bubbler
4	29	2"	Spray
5	37	2"	Spray
6	34	2"	Spray
7	37	2"	Spray
8	36	2"	Spray
9	36	2"	Spray
10	36	2"	Spray
11	35	2"	Drip
12	35	2"	Drip
13	33	2"	Drip
14	28	2"	Drip
15	24	2"	Drip

Irrigation Specifications

Water Source
 New 4" well, 3hp pump

Main Line Qty
 852 2" PVC Class 200 Irrigation Main Line

Sprays	Qty	GPM	T Flow (GPM)	Run Time	Gallons	Manufacturer	Type	Pattern
▲ Bubbler	113	1.00	113.00	0:20	2260	RainBird® 1800 PRS	6" Pop-Up	5' MPR Stream Bubbler
⊙ 10QC	4	0.29	1.16	0:20	23	RainBird® 1800 PRS	6" Pop-Up	10' R Part Circle (90) HE VAN Series Nozzle
⊙ 10HC	54	0.58	1.32	0:20	626	RainBird® 1800 PRS	6" Pop-Up	10' R Half Circle (180) HE VAN Series Nozzle
⊙ 12QC	8	0.29	2.32	0:20	46	RainBird® 1800 PRS	6" Pop-Up	12' R Part Circle (90) HE VAN Series Nozzle
⊙ 12HC	136	0.42	4.4	0:20	2088	RainBird® 1800 PRS	6" Pop-Up	12' R Half Circle (180) HE VAN Series Nozzle
⊙ 12TC	2	0.66	1.32	0:20	26	RainBird® 1800 PRS	6" Pop-Up	12' R Part Circle (270) HE VAN Series Nozzle
⊙ 15QC	2	0.42	0.84	0:20	17	RainBird® 1800 PRS	6" Pop-Up	15' R Part Circle (90) HE VAN Series Nozzle
⊙ 15HC	38	0.85	32.3	0:20	646	RainBird® 1800 PRS	6" Pop-Up	15' R Half Circle (180) HE VAN Series Nozzle
⊙ 17QC	4	0.80	40.00	0:20	14	RainBird® 1800 PRS	6" Pop-Up	17' R Part Circle (90) VAN Series Nozzle
⊙ 17HC	40	0.81	40.40	0:20	808	RainBird® 1800 PRS	6" Pop-Up	17' R Half Circle (180) VAN Series Nozzle
Total	15		329.06		6,581			
Drip	Qty	GPM	T Flow (GPM)	Run Time	Gallons	Manufacturer	Type	Pattern
	10,065	1.53/100'	153.99	0:45	6,930	Rainbird XFD Dripline	0.9 gph emitters, emitter spacing 12", spaced 12" apart	

MAINLINE LOCATION, WHERE SHOWN, IS FOR GRAPHIC CLARITY PURPOSES ONLY. ALWAYS INSTALL INSIDE PROPERTY LINES. LOCATE AT THE BACK OF CURB, FRONT OF WALK, BACK OF WALK, OR ADJACENT TO OTHER HARDSCAPES TO FACILITATE FUTURE LOCATION AND TO PROTECT FROM DAMAGE. ENSURE MAINLINE IS INSTALLED ACCORDING TO THE IRRIGATION SPECIFICATIONS AND DETAILS.

QUANTITIES GIVEN ARE FOR CONTRACTOR CONVENIENCE ONLY. THE ACCURACY IS NOT GUARANTEED. ALL QUANTITIES SHALL BE VERIFIED.

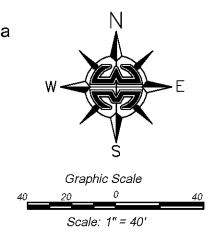
72 HOURS BEFORE YOU DIG
 CALL SUNSHINE
 1-800-432-4770

FOR EMERGENCY CONTACT OF AT&T CALL 1-800-252-1133

Legend

- P** Pump Station Pump Station with 3 hp submersible pump in new 4" well
- C** Controller Rainbird 24 Station Controller with MiniKlik Rainsensor
- F** Flush Valve Rainbird XD series Flush Valve
- A** Air Relief Valve Rainbird XD Series Air Relief Valve, installed at the high point
- Valve** IRRITROL Century 100P Series RCV (Sized per Plan) in a Carson jumbo valve box
- Gate Valve** NIBCO T-113 Brass Gate Valve (Line Size) in a Carson 1419 Valve Box.
- ML** 2" Main line PVC Class 200
- Lateral Line PVC Class 160
- - -** Schedule 40 Sleeve

2 Spare Wires are to be installed. All Wire shall be 14 gauge.



CarMax Bradenton
 Manatee County
 Irrigation Plan - Bubblers & Spray

Scale: 1" = 20'
 Drawn by: SM
 Checked by: SM
 CADD No.: 18-005 ir.dwg
 Date: 1.26.18

Revisions

Date	Comments
2.12.18	permit comments

Landscapesign.com
 702 SW Pine Ave
 Fort St. Lucie, FL 34953
 772-971-6060 ph, 772-871-6659 fax

IR-01