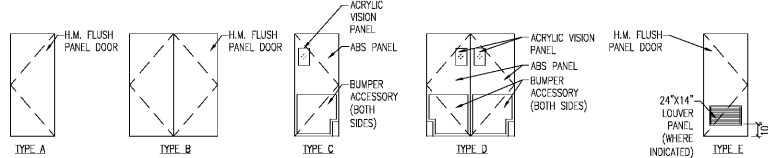


# DOOR SCHEDULE

OPN'G NO.	TYPE	MATERIAL	WIDTH	HEIGHT	THICK.	LOUVER	GLASS TYPE	FRAME MATERIAL	HEAD	JAMB	SILL	T-HOLD	LABEL	HRDWR. GROUP	REMARKS	OPN'G NO.
1	D	ABS	PAIR 3'-0"	9'-0"	MFR	~	MFR	H.M.	~	ASD-56	~	~	~	017	SEE NOTE #4.5,6	1
2	C	ABS	3'-0"	7'-0"	MFR	~	MFR	H.M.	~	ASD-56	~	~	~	017	SEE NOTE #4.6	2
3	E	H.M.	3'-0"	7'-0"	1-3/4"	YES	~	H.M.	~	6C/AS.1	~	~	~	003	SEE NOTE #3,7	3
4	E	H.M.	3'-0"	7'-0"	1-3/4"	YES	~	H.M.	~	6C/AS.1	~	~	~	003	SEE NOTE #3,7	4
5	D	ABS	PAIR 3'-0"	9'-0"	MFR	~	MFR	H.M.	~	ASD-56	~	~	~	017	SEE NOTE #4.6	5
6	B	H.M.	PAIR 3'-6"	7'-0"	1-3/4"	~	~	EXIST.	~	~	~	~	~	009	SEE NOTE #2,3,8	6
7	D	ABS	PAIR 3'-6"	9'-0"	MFR	~	MFR	H.M.	~	ASD-56	~	~	~	017	SEE NOTE #4.6	7
8	D	ABS	PAIR 3'-6"	9'-0"	MFR	~	MFR	H.M.	~	ASD-56	~	~	~	017	SEE NOTE #4.6	8
9	A	H.M.	4'-0"	7'-0"	1-3/4"	~	~	EXIST.	~	~	~	~	~	005	SEE NOTE #2,3,8	9
10	C	ABS	3'-0"	7'-0"	MFR	~	MFR	EXIST.	~	~	~	~	~	017	SEE NOTE #2,4,5	10
11	A	H.M.	3'-0"	7'-0"	1-3/4"	~	~	EXIST.	~	~	~	~	~	008	SEE NOTE #2,3	11

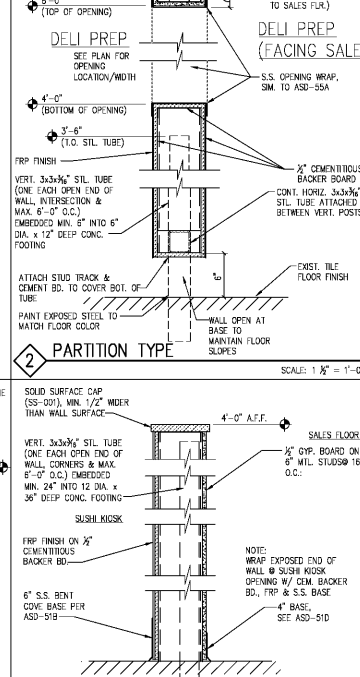
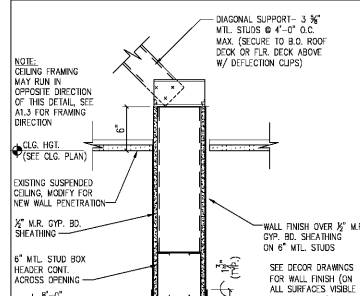
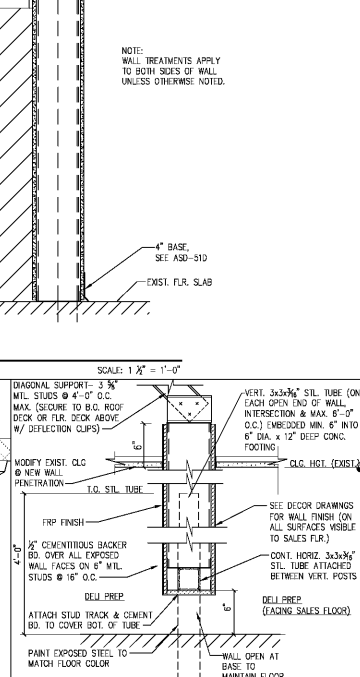
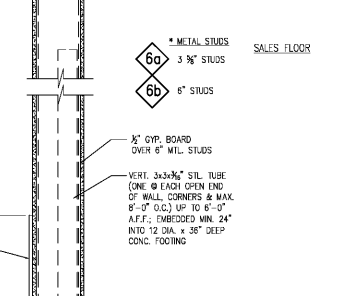
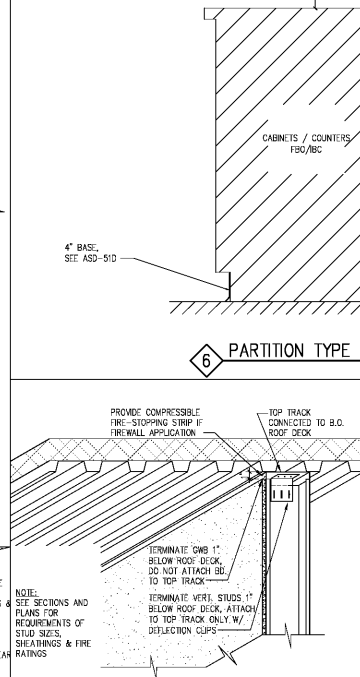
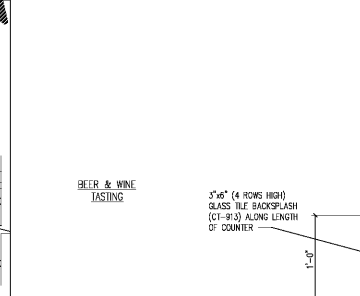
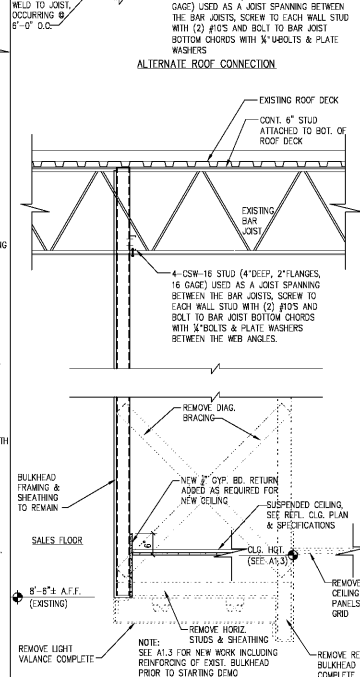
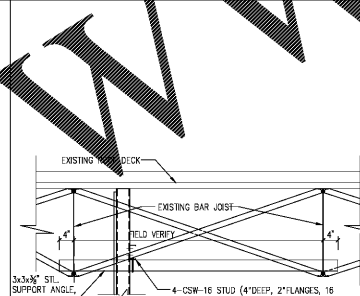
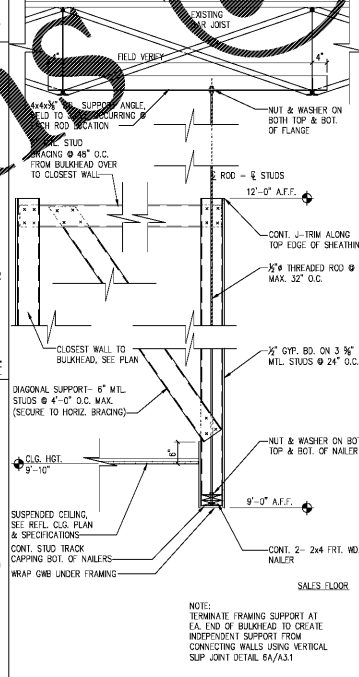
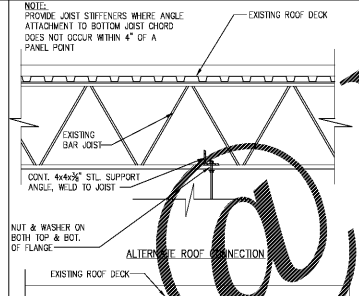
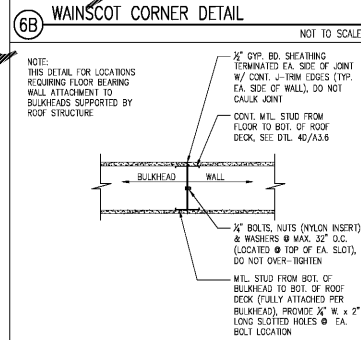
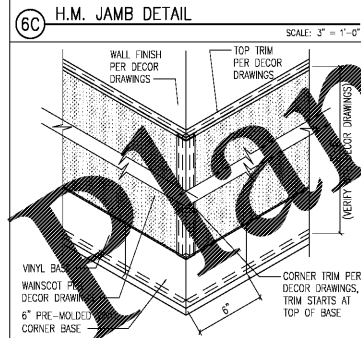
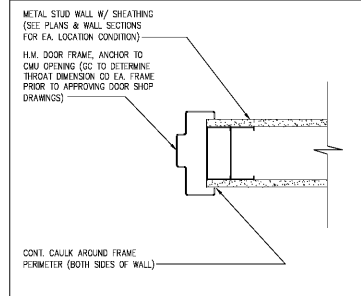
## DOOR NOTES:

- GENERAL NOTE: CONTRACTOR TO FIELD VERIFY ALL OPENING WIDTHS, HEIGHTS & WALL THICKNESS FOR SHOP DRAWINGS SUBMITTALS.
- EXISTING FRAME TO REMAIN. CONTRACTOR TO FIELD VERIFY ALL MEASUREMENTS INCLUDING SUPPLYING HINGE PLACEMENTS (IF/WHERE OCCUR) FOR THE SHOP DRAWINGS SUBMITTAL.
- ALL DOOR HARDWARE IS FURNISHED AND INSTALLED BY CONTRACTOR UNLESS NOTED OTHERWISE. SEE SPECIFICATION SECTION 08100 FOR DOOR HARDWARE TYPES.
- CONTRACTOR TO INSTALL OWNER SUPPLIED DOOR.
- TRAFFIC DOOR PANELS TO BE INSULATED.
- FURNISH & INSTALL NEW FRAME.
- FURNISH & INSTALL NEW DOOR & FRAME.
- FURNISH & INSTALL NEW DOOR.



## DOOR TYPES

SEE ALSO SPECIFICATION SECTIONS: 016111-03, 016112, 055000, 081113, 083113, 083373, 083336, 083800, 084113, 084279, 087100, 089000



## GENERAL PARTITION NOTES

- ALL WALL STUDS, WALL FURNISH AND CEILING JOISTS TO BE COLD FORMED METAL MEMBERS PER SPECIFICATION SECTIONS 05400 & 07200.
- SEE SPECIFICATION SECTIONS 05400 & 07200 FOR WALL STUDS/FURNISH MATERIAL GAUGE AND BRACING REQUIREMENTS.
- ALL STUDS/FURNISH RECEIVING MAX. GYPSUM BOARD, CEMENTITIOUS BOARD AND/OR FRP FINISH TO BE SPACED @ 16" O.C. ALL OTHER APPLICATIONS TO BE 24" O.C. UNLESS NOTED OTHERWISE.
- FURNISH & INSTALL TRIM BLOCKING IN WALLS FOR WALL MOUNTED SWITCHES AND ACCESSORIES PER SPECIFICATION SECTION 08100.
- FURNISH & INSTALL GYPSUM AND CEMENTITIOUS SHEATHINGS PER SPECIFICATION SECTION 07200.
- FURNISH & INSTALL FLOOR TILE, WALL TILE, COVE AND WATERPROOFING MEMBRANE PER SPECIFICATION SECTION 08300.
- ALL STUDS/FURNISH VERTICALLY UP TO BOTTOM OF ROOF OR MEZZANINE STRUCTURE/DECK TO BE STOPPED 1" SHORT AND CONNECTED W/ DEFLECTION CLIPS PER SPECIFICATION SECTION 07200.
- FURNISH & INSTALL THERMAL/SOUND INSULATION BATTIS PER SPECIFICATION SECTION 07200.
- ALL NEW SHEATHING ON "NET" WALLS AND/OR RECEIVING FRP FINISH TO BE 3/8" CEMENTITIOUS BOARD UP TO 4'-0" AFF. AND 1/2" GYPSUM BOARD ABOVE UNLESS NOTED OTHERWISE.
- FURNISH & INSTALL SEALANT TO ALL JOINTS BETWEEN DISMILAR MATERIALS PER SPECIFICATION SECTION 07200.
- COORDINATE LOCATIONS OF OTHER UNDER-SLAB UTILITIES FROM SHOP DRAWINGS USING CONCRETE FINE FINISHING ROOM PRIOR TO CORE DRILLING PLANS FOR VERTICAL TIES AND ALERT OWNER OF ANY POSSIBLE CONFLICTS.

**CAPSTONE PROJECT SERVICES, PLC**  
ARCHITECTURAL & CONSTRUCTION SERVICES  
OFFICE LOCATIONS: ROANOKE, VA - FT. MYERS, FL

A REMODEL FOR:  
**KROGER R-322**  
915 HARDY ROAD LAKE DRIVE S/C VINTON, VA

PROJECT NO: 02-22-2019  
CONSTRUCTION SET  
DOOR SCHEDULE, SECTIONS AND DETAILS  
SHIFT TITLE: A3.1

Order Plans @ WWW.LDLINE.COM