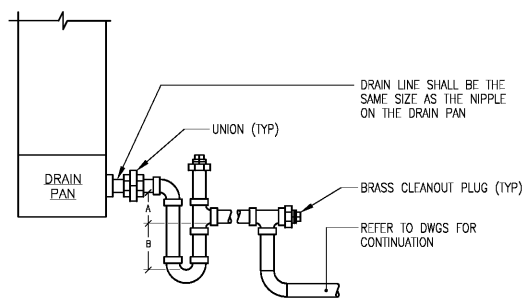


- NOTES:
- HANGER SPACING SHALL BE IN ACCORDANCE WITH THE PROJECT SPECIFICATIONS.
  - CLEVIS TYPE PIPE HANGERS SHALL BE USED FOR PIPE SIZES 10" AND SMALLER AND WHEN PIPING SYSTEMS ARE STATIONARY.
  - PROVIDE SEISMIC SWAY BRACING FOR ALL PIPE HANGERS PER THE INTERNATIONAL BUILDING CODE AND THE INTERNATIONAL MECHANICAL CODE AND THE SMACNA SEISMIC RESTRAINT MANUAL GUIDELINES FOR MECHANICAL SYSTEMS SECOND EDITION - FEBRUARY, 1998 AND ADDENDUM NO. 1 SEPTEMBER, 2000.
  - CONTRACTOR SHALL VERIFY MAXIMUM LOADING ON PIPE SUPPORT ASSEMBLIES.
  - ALL MECHANICAL PIPES AT EXPOSED CEILING STRUCTURES TO RUN DIRECTLY BELOW DECK. PIPES THAT RETURN TO A LOWER ROOM MUST TRAVEL VERTICALLY WITHIN THE WALL.

DETAIL - PIPE HANGER

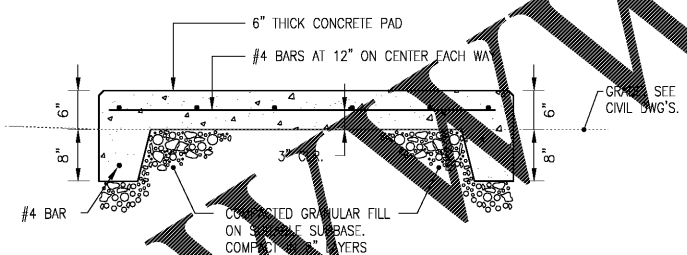
SCALE: NONE 1



- NOTE:
- DIMENSION (A): MAINTAIN AT LEAST ONE PIPE DIAMETER FALL ACROSS THE TRAP.
  - DIMENSION (B): TRAP WATER SEAL IN INCHES SHALL EQUAL UNIT TOTAL STATIC PRESSURE SCHEDULED.

DETAIL - COIL CONDENSATE DEEP SEAL TRAP

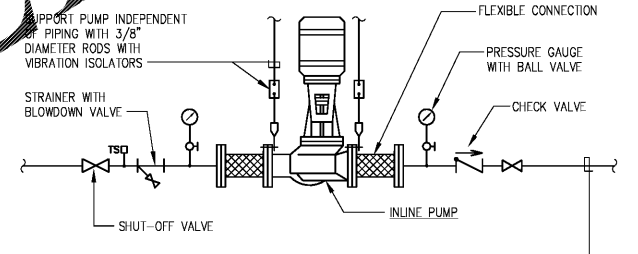
SCALE: NONE 2



- NOTE:
- SIZE PAD LARGER ALL AROUND TO SUIT EQUIPMENT FURNISHED

DETAIL - EXTERIOR CONCRETE EQUIPMENT PAD

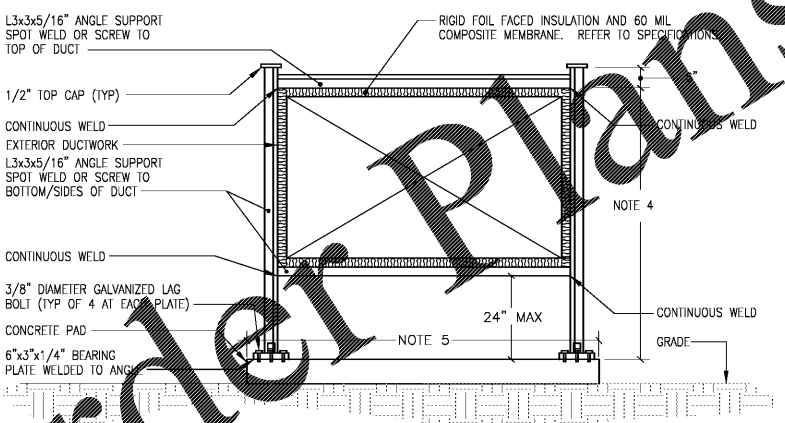
SCALE: NONE 3



- NOTE:
- PUMP SHALL BE INSTALLED HORIZONTAL OR VERTICAL AS REQUIRED BY PUMP MANUFACTURER.
  - PROVIDE AQUASTAT FOR HOT WATER RECIRCULATION PUMP CONTROL. REFER TO SPECIFICATIONS FOR SEQUENCE OF OPERATION.

DETAIL - INLINE PUMP

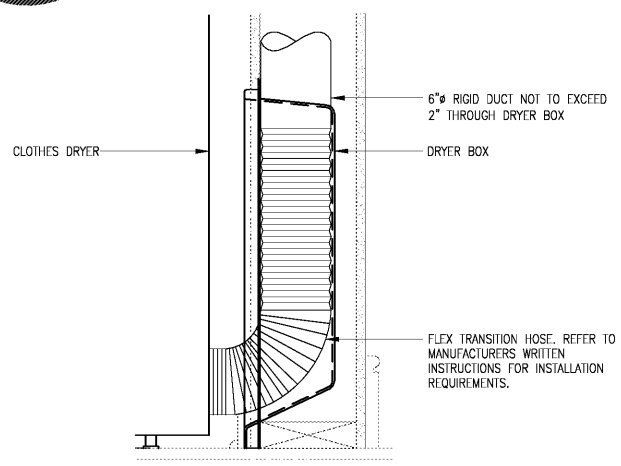
SCALE: NONE 4



- NOTES:
- STEEL SUPPORTS SHALL BE PAINTED WITH 2 COATS OF EPOXY PAINT.
  - EXTERIOR DUCTWORK SHALL BE SUPPORTED. PROVIDE SUPPORTS IN ACCORDANCE WITH "SMACNA" DUCT MANUAL FOR MINIMUM 6" STATIC PRESSURE DUCT CONSTRUCTION. SUPPORT SPACING MAXIMUM 70" ON CENTER.
  - PROVIDE JOINT SEALER UNDER ALL LAP JOINTS. TOP LONGITUDINAL SEAMS ARE NOT ALLOWED. COORDINATE DUCT SUPPORT FRAME DIMENSIONS WITH ACTUAL INSTALLATION AND FIELD CONDITIONS.
  - DUCT WIDTH PLUS 18".

DETAIL - EXTERIOR DUCTWORK SUPPORT

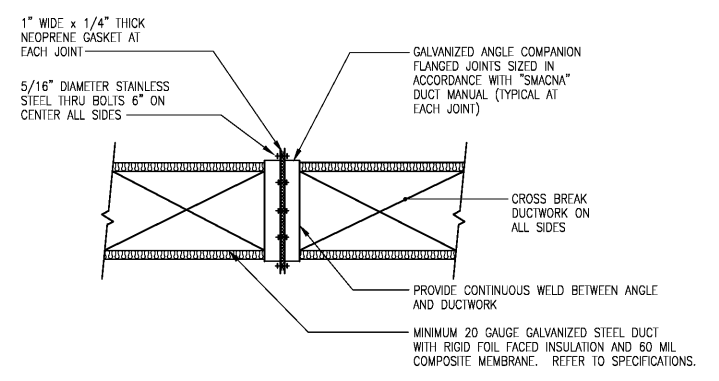
SCALE: NONE 5



- NOTES:
- DRYER DUCT SHALL BE RIGID, SMOOTH METAL (NO FLEXIBLE DUCT ALLOWED IN CONCEALED AREAS).
  - SEAL ALL JOINTS WITH FOIL BACKED PRESSURE SENSITIVE DUCT TAPE MEETING REQUIREMENTS OF UL 181.
  - DRYER BOX SHALL BE METAL, INSTALLED AS LOW AS POSSIBLE AND IN-LINE WITH THE DRYER EXHAUST CONNECTION TO PERMIT PROPER COLLECTION OF THE DRYER TRANSITION HOSE.

DETAIL - DRYER BOX

SCALE: NONE 6



- NOTES:
- DUCT CONSTRUCTION SHALL BE SUITABLE FOR MINIMUM 6" WATER GAUGE STATIC PRESSURE.
  - INSTALL ALL SEAMS ON BOTTOM SIDE OF DUCT, PROVIDE WATERTIGHT CONSTRUCTION.

DETAIL - EXTERIOR DUCT CONSTRUCTION

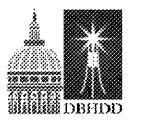
SCALE: NONE 7

EYP/STANLEYBEAMAN&SEARS  
CONSULTANTS  
RME ENGINEERING  
Mechanical, Plumbing, Electrical Engineering  
2501 Hammond Drive, Suite 600  
Atlanta, Georgia 30328  
678.914.0028



Copyright © 2019 by Stanley Beaman & Sears, Inc. All rights reserved.  
This document is the property of Stanley Beaman & Sears, Inc.  
It is to be used only for the specific project identified or intended.  
It is not to be used on any other projects or applications to this  
project, in whole or in part, without the express written agreement  
with Stanley Beaman & Sears, Inc.

PROJECT DATA



GSFIC DBHDD-024  
SAVANNAH TREATMENT PLANT RENOVATION  
1915 Eisenhower Drive  
Savannah, Georgia 31406

KEYPLAN



ISSUANCE AND DATE

CONSTRUCTION DOCUMENTS 01/19/2019

SHEET INFORMATION  
ORIGINAL ISSUE: MAY 9, 2018  
JOB NUMBER: 6017135.01  
DRAWN: DVC  
CHECKED: MGH  
APPROVED: CRB

Mechanical Details