

NOT FOR CONSTRUCTION
PRELIM-BUDGET

BOJANGLES' 14 RESTAURANT
HUDSON BRIDGE ROAD
AT WILLIS DRIVE
STOCKBRIDGE, GEORGIA

NOT FOR CONSTRUCTION
PRELIM-BUDGET

ISSUE DATE: 02-08-2019

REVISION 1: --
REVISION 2: --
REVISION 3: --
REVISION 4: --

PROJECT #: 18-164-000
CONTENT: ELECTRICAL RISER AND DETAILS

PROJECT ENGINEER: SABER

DRAWN BY: RPL

CADD FILE NAME: ESD-1901-14-E07.dwg

THIS DRAWING AND THE DESIGN SHOWN ARE THE PROPERTY OF BOJANGLES' RESTAURANTS, INC. THE REPRODUCTION OR USE OF THIS DRAWING WITHOUT THEIR WRITTEN CONSENT IS PROHIBITED. ANY INFRINGEMENT IS SUBJECT TO LEGAL ACTION.

FIELD ELECTRICIAN SHALL MAKE FINAL CONNECTION OR CONNECT CORD & PLUG SET AT EACH UNIT FROM CONDUIT BROUGHT DOWN IN CHASE/HALL. IN ADDITION, HE IS TO MAKE FIELD CONNECTIONS AS REQUIRED FOR UNIT; SEE MANUFACTURER'S DRAWINGS FOR DETAILS.

ELECTRICAL ROUGH-IN SCHEDULE

ITEM	QTY	DESCRIPTION	VOLTS/PHASE			KW	HP	AMPS	NOTES
			120/1	120/208/1	208/1				
7	1	HAND DRYER	120-V	1	12-W				
17D	1	ICE MAKER	208-V	1	10.0				208-V, 1 ϕ SERVICE, 20 AMP MAX FUSE, 1/2" NEMA 5-15P; WIRE TO OUTLET IN COUNTER
17H	1	COFFEE BREWER (FUTURE)	120-V	1	13.8				FUTURE UNIT, VERIFY LOAD & LOCATION WITH MECHANICAL CONTRACTOR. VERIFY LOCATION OF UNIT. SEE SCHEDULE BELOW FOR INDIVIDUAL ITEMS
17L	1	SODA/ICE DISPENSER	120-V	1	2.5				BY OVERSEER, VERIFY LOAD & LOCATION WITH MECHANICAL CONTRACTOR. VERIFY LOCATION OF UNIT. SEE SCHEDULE BELOW FOR INDIVIDUAL ITEMS
21	1	FRONT SERVICE COUNTER	120-V	1	61.9	131-HP			SEE SCHEDULE BELOW FOR INDIVIDUAL ITEMS
E-29	24"	1	65.4	131-HP					BY OVERSEER, VERIFY LOAD & LOCATION WITH MECHANICAL CONTRACTOR. VERIFY LOCATION OF UNIT. SEE SCHEDULE BELOW FOR INDIVIDUAL ITEMS
E-35D	16"	2	20A OR						BY OVERSEER, VERIFY LOAD & LOCATION WITH MECHANICAL CONTRACTOR. VERIFY LOCATION OF UNIT. SEE SCHEDULE BELOW FOR INDIVIDUAL ITEMS
E-35F	16"	1	20A OR						BY OVERSEER, VERIFY LOAD & LOCATION WITH MECHANICAL CONTRACTOR. VERIFY LOCATION OF UNIT. SEE SCHEDULE BELOW FOR INDIVIDUAL ITEMS
E-35K	54"	2	13.8			29-HP			BY OVERSEER, VERIFY LOAD & LOCATION WITH MECHANICAL CONTRACTOR. VERIFY LOCATION OF UNIT. SEE SCHEDULE BELOW FOR INDIVIDUAL ITEMS
E-47	12"	1	117.5	246-KW					BY OVERSEER, VERIFY LOAD & LOCATION WITH MECHANICAL CONTRACTOR. VERIFY LOCATION OF UNIT. SEE SCHEDULE BELOW FOR INDIVIDUAL ITEMS
E-50	DROP	1	20A OR						BY OVERSEER, VERIFY LOAD & LOCATION WITH MECHANICAL CONTRACTOR. VERIFY LOCATION OF UNIT. SEE SCHEDULE BELOW FOR INDIVIDUAL ITEMS
E-50A	ON ROOF	1	8.4	1/2-HP					BY OVERSEER, VERIFY LOAD & LOCATION WITH MECHANICAL CONTRACTOR. VERIFY LOCATION OF UNIT. SEE SCHEDULE BELOW FOR INDIVIDUAL ITEMS
E-50B	DROP	2	0.83	0.0-HP					BY OVERSEER, VERIFY LOAD & LOCATION WITH MECHANICAL CONTRACTOR. VERIFY LOCATION OF UNIT. SEE SCHEDULE BELOW FOR INDIVIDUAL ITEMS
E-50C	DROP	1	20A OR						BY OVERSEER, VERIFY LOAD & LOCATION WITH MECHANICAL CONTRACTOR. VERIFY LOCATION OF UNIT. SEE SCHEDULE BELOW FOR INDIVIDUAL ITEMS
E-50F	ON ROOF	1	9.4			3.0-HP			BY OVERSEER, VERIFY LOAD & LOCATION WITH MECHANICAL CONTRACTOR. VERIFY LOCATION OF UNIT. SEE SCHEDULE BELOW FOR INDIVIDUAL ITEMS
E-51A	ON ROOF	1	2.9			3/4-HP			BY OVERSEER, VERIFY LOAD & LOCATION WITH MECHANICAL CONTRACTOR. VERIFY LOCATION OF UNIT. SEE SCHEDULE BELOW FOR INDIVIDUAL ITEMS
E-51B	DROP	2	0.83	0.0-HP					BY OVERSEER, VERIFY LOAD & LOCATION WITH MECHANICAL CONTRACTOR. VERIFY LOCATION OF UNIT. SEE SCHEDULE BELOW FOR INDIVIDUAL ITEMS
E-52A	ON ROOF	1	2.9			3/4-HP			BY OVERSEER, VERIFY LOAD & LOCATION WITH MECHANICAL CONTRACTOR. VERIFY LOCATION OF UNIT. SEE SCHEDULE BELOW FOR INDIVIDUAL ITEMS
E-53	12"	4	5.0	1/3-HP					BY OVERSEER, VERIFY LOAD & LOCATION WITH MECHANICAL CONTRACTOR. VERIFY LOCATION OF UNIT. SEE SCHEDULE BELOW FOR INDIVIDUAL ITEMS
E-60	38"	1	24.0			5.0-KW			BY OVERSEER, VERIFY LOAD & LOCATION WITH MECHANICAL CONTRACTOR. VERIFY LOCATION OF UNIT. SEE SCHEDULE BELOW FOR INDIVIDUAL ITEMS
E-65	24"	1	3.3	1/3-HP					BY OVERSEER, VERIFY LOAD & LOCATION WITH MECHANICAL CONTRACTOR. VERIFY LOCATION OF UNIT. SEE SCHEDULE BELOW FOR INDIVIDUAL ITEMS
E-68	24"	1	2.3						BY OVERSEER, VERIFY LOAD & LOCATION WITH MECHANICAL CONTRACTOR. VERIFY LOCATION OF UNIT. SEE SCHEDULE BELOW FOR INDIVIDUAL ITEMS
E-69	DROP	1	6.3	1/3-HP					BY OVERSEER, VERIFY LOAD & LOCATION WITH MECHANICAL CONTRACTOR. VERIFY LOCATION OF UNIT. SEE SCHEDULE BELOW FOR INDIVIDUAL ITEMS
E-76	12"	5	0.7						BY OVERSEER, VERIFY LOAD & LOCATION WITH MECHANICAL CONTRACTOR. VERIFY LOCATION OF UNIT. SEE SCHEDULE BELOW FOR INDIVIDUAL ITEMS
E-77	12"	2	0.7						BY OVERSEER, VERIFY LOAD & LOCATION WITH MECHANICAL CONTRACTOR. VERIFY LOCATION OF UNIT. SEE SCHEDULE BELOW FOR INDIVIDUAL ITEMS
E-80	12"	2	10.0	1/3-HP					BY OVERSEER, VERIFY LOAD & LOCATION WITH MECHANICAL CONTRACTOR. VERIFY LOCATION OF UNIT. SEE SCHEDULE BELOW FOR INDIVIDUAL ITEMS
E-81	12"	1	5.0	1/3-HP					BY OVERSEER, VERIFY LOAD & LOCATION WITH MECHANICAL CONTRACTOR. VERIFY LOCATION OF UNIT. SEE SCHEDULE BELOW FOR INDIVIDUAL ITEMS
E-84	12"	1	28.1			6.8-KW			BY OVERSEER, VERIFY LOAD & LOCATION WITH MECHANICAL CONTRACTOR. VERIFY LOCATION OF UNIT. SEE SCHEDULE BELOW FOR INDIVIDUAL ITEMS
E-87	DROP	1	20A OR						BY OVERSEER, VERIFY LOAD & LOCATION WITH MECHANICAL CONTRACTOR. VERIFY LOCATION OF UNIT. SEE SCHEDULE BELOW FOR INDIVIDUAL ITEMS
E-87A	ON ROOF	1	1.2			20/75-HP			BY OVERSEER, VERIFY LOAD & LOCATION WITH MECHANICAL CONTRACTOR. VERIFY LOCATION OF UNIT. SEE SCHEDULE BELOW FOR INDIVIDUAL ITEMS
E-87B	DROP	1	8.2	1.89-KW					BY OVERSEER, VERIFY LOAD & LOCATION WITH MECHANICAL CONTRACTOR. VERIFY LOCATION OF UNIT. SEE SCHEDULE BELOW FOR INDIVIDUAL ITEMS
E-87A1	DROP	1	20A OR 0.5KW						BY OVERSEER, VERIFY LOAD & LOCATION WITH MECHANICAL CONTRACTOR. VERIFY LOCATION OF UNIT. SEE SCHEDULE BELOW FOR INDIVIDUAL ITEMS
E-87B	ON ROOF	1	4.7			1.0-HP			BY OVERSEER, VERIFY LOAD & LOCATION WITH MECHANICAL CONTRACTOR. VERIFY LOCATION OF UNIT. SEE SCHEDULE BELOW FOR INDIVIDUAL ITEMS
E-87C	DROP	2	6.8	1/3-HP					BY OVERSEER, VERIFY LOAD & LOCATION WITH MECHANICAL CONTRACTOR. VERIFY LOCATION OF UNIT. SEE SCHEDULE BELOW FOR INDIVIDUAL ITEMS
E-88	DROP	1	20A OR						BY OVERSEER, VERIFY LOAD & LOCATION WITH MECHANICAL CONTRACTOR. VERIFY LOCATION OF UNIT. SEE SCHEDULE BELOW FOR INDIVIDUAL ITEMS
E-88A	DROP	1	2.0	20/75-HP					BY OVERSEER, VERIFY LOAD & LOCATION WITH MECHANICAL CONTRACTOR. VERIFY LOCATION OF UNIT. SEE SCHEDULE BELOW FOR INDIVIDUAL ITEMS
E-88B	ON ROOF	1	4.7			1.0-HP			BY OVERSEER, VERIFY LOAD & LOCATION WITH MECHANICAL CONTRACTOR. VERIFY LOCATION OF UNIT. SEE SCHEDULE BELOW FOR INDIVIDUAL ITEMS
E-89	DROP	1	20A OR						BY OVERSEER, VERIFY LOAD & LOCATION WITH MECHANICAL CONTRACTOR. VERIFY LOCATION OF UNIT. SEE SCHEDULE BELOW FOR INDIVIDUAL ITEMS
E-89A	DROP	1	1.2			20/75-HP			BY OVERSEER, VERIFY LOAD & LOCATION WITH MECHANICAL CONTRACTOR. VERIFY LOCATION OF UNIT. SEE SCHEDULE BELOW FOR INDIVIDUAL ITEMS
E-89B	ON ROOF	1	8.2	1.89-KW					BY OVERSEER, VERIFY LOAD & LOCATION WITH MECHANICAL CONTRACTOR. VERIFY LOCATION OF UNIT. SEE SCHEDULE BELOW FOR INDIVIDUAL ITEMS
E-89A1	DROP	1	20A OR 0.5KW						BY OVERSEER, VERIFY LOAD & LOCATION WITH MECHANICAL CONTRACTOR. VERIFY LOCATION OF UNIT. SEE SCHEDULE BELOW FOR INDIVIDUAL ITEMS
E-89B	ON ROOF	1	10.3			2.5-HP			BY OVERSEER, VERIFY LOAD & LOCATION WITH MECHANICAL CONTRACTOR. VERIFY LOCATION OF UNIT. SEE SCHEDULE BELOW FOR INDIVIDUAL ITEMS
E-90	46"	1	17.2	2.06					BY OVERSEER, VERIFY LOAD & LOCATION WITH MECHANICAL CONTRACTOR. VERIFY LOCATION OF UNIT. SEE SCHEDULE BELOW FOR INDIVIDUAL ITEMS
E-98	60"	1	20A OR						BY OVERSEER, VERIFY LOAD & LOCATION WITH MECHANICAL CONTRACTOR. VERIFY LOCATION OF UNIT. SEE SCHEDULE BELOW FOR INDIVIDUAL ITEMS
E-99	71"	1	13.5						BY OVERSEER, VERIFY LOAD & LOCATION WITH MECHANICAL CONTRACTOR. VERIFY LOCATION OF UNIT. SEE SCHEDULE BELOW FOR INDIVIDUAL ITEMS
E-101	66"	1	20A OR						BY OVERSEER, VERIFY LOAD & LOCATION WITH MECHANICAL CONTRACTOR. VERIFY LOCATION OF UNIT. SEE SCHEDULE BELOW FOR INDIVIDUAL ITEMS
E-107	DROP	1	7.2	1/2-HP					BY OVERSEER, VERIFY LOAD & LOCATION WITH MECHANICAL CONTRACTOR. VERIFY LOCATION OF UNIT. SEE SCHEDULE BELOW FOR INDIVIDUAL ITEMS
E-C01	54"	3	20A OR						BY OVERSEER, VERIFY LOAD & LOCATION WITH MECHANICAL CONTRACTOR. VERIFY LOCATION OF UNIT. SEE SCHEDULE BELOW FOR INDIVIDUAL ITEMS
E-C02	18"	3	20A OR						BY OVERSEER, VERIFY LOAD & LOCATION WITH MECHANICAL CONTRACTOR. VERIFY LOCATION OF UNIT. SEE SCHEDULE BELOW FOR INDIVIDUAL ITEMS
E-C03	86"	1	20A OR						BY OVERSEER, VERIFY LOAD & LOCATION WITH MECHANICAL CONTRACTOR. VERIFY LOCATION OF UNIT. SEE SCHEDULE BELOW FOR INDIVIDUAL ITEMS

ELECTRICAL CONNECTIONS AT ITEM 47, T-LINE COUNTER

ITEM	QTY	DESCRIPTION	VOLTS/PHASE	KW	HP	AMPS	NOTES
46	1	CONNECTOR TOASTER	120	1	3.3	1.8	
47A	2	HOT FOOD WELL	120	1	1.6	2.3	
47B	2	HOT FOOD WELL	120	1	1.6	2.3	
47C	1	HEAT LAMP	120	1	0.50	1.0	
47D	1	HOLDING UNIT	120	1	3.8	1.8	
47E	1	HOLDING UNIT	120	1	3.8	1.8	
47F	1	SANDBOIL UNIT	120	1	1.6	2.6	
47G	1	S/S FRY DUMP STATION	120	1	2.6	2.6	
47H	1	HEAT LAMP	120	1	1.0	1.0	
47I	2	HEAT LAMP	120	1	1.0	1.0	
47J	2	HEAT LAMP	120	1	1.0	1.0	

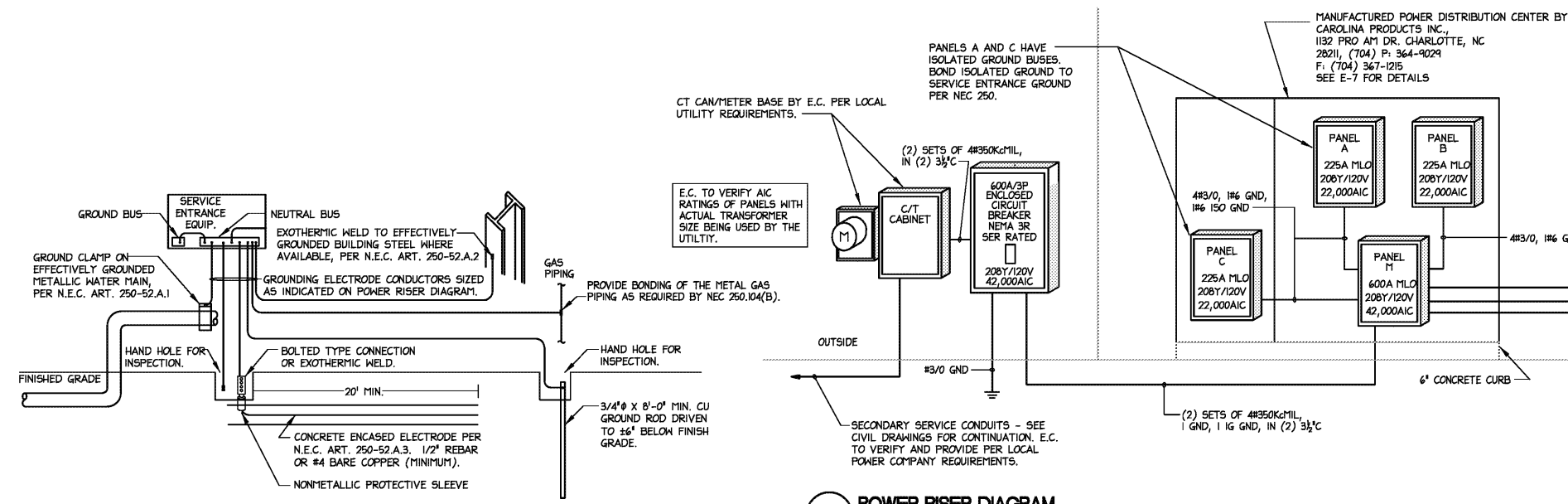
ELECTRICAL CONNECTIONS AT ITEM 21, FRONT SERVICE COUNTER

ITEM	QTY	DESCRIPTION	VOLTS/PHASE	KW	HP	AMPS	NOTES
21B	1	UNDERCOUNTER REFRIGERATOR	120	1	4.0	5.15P	NEMA 5-15P; WIRE TO OUTLET IN COUNTER
21C	1	S/S FRY DUMP STATION	208	1	2.6	12.5	
21E	2	HOT FOOD WELL	120	1	1.7	13.8	MOD-100-TD
21F	1	MERCHANDISER	120-208	1	2.0	12.1	
21G	1	WELL POT WARMER	208	1	2.8	13.5	
21M	2	POS SYSTEM	120	1			20A OR DUPLEX RECEPTACLE (GFO)

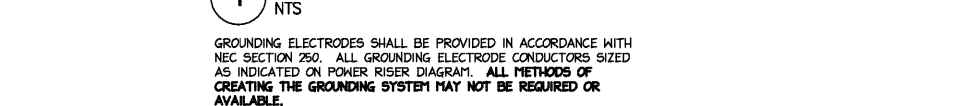
ELECTRICAL CONNECTIONS AT ITEM 29, PACK STATION

ITEM	QTY	DESCRIPTION	VOLTS/PHASE	KW	HP	AMPS	NOTES
29A	1	UNDER COUNTER REFRIGERATOR	115	1	1/6	2.6	NEMA 5-15P; WIRE TO OUTLET IN COUNTER
29C	4	HOT FOOD WELL	120	1	1.7	13.8	MOD-100-TD
29D	1	S/S FRY DUMP STATION	208	1	2.6	12.5	
29E	1	HEAT LAMP	208	1	0.840	4.1	
29F	1	MERCHANDISER	120-208	1	2.0	12.1	
29K	1	LIGHT	120	1	1.0	1.0	

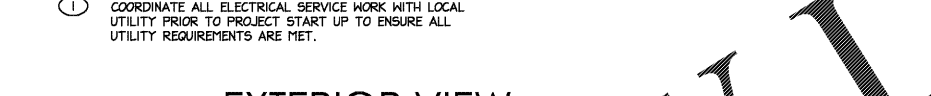
THE ARCHITECT/ENGINEER DOES NOT DEFINE THE SCOPE OF INDIVIDUAL TRADES, SUBCONTRACTORS, MATERIAL SUPPLIERS, OR VENDORS. ANY SHEET NUMBERING SYSTEM USED WHICH IDENTIFIES DISCIPLINES IS SOLELY TO SEPARATE ARCHITECTS AND ENGINEERS' SCOPE. IT DOES NOT DEFINE A SUBCONTRACTOR'S SCOPE OF WORK. ANY DISCREPANCIES BETWEEN DRAWINGS, SPECIFICATIONS, CODES OR CONSTRUCTION SEQUENCING SHALL BE BROUGHT TO THE ATTENTION OF THE ARCHITECT PRIOR TO PROCEEDING. NO CONSIDERATION WILL BE GIVEN TO REQUESTS FOR CHANGE ORDERS FOR FAILURE TO OBTAIN AND REVIEW THE COMPLETE SET OF CONSTRUCTION DOCUMENTS, OR FOR FAILURE TO SEEK INTERPRETATION FROM ARCHITECT FOR DISCREPANCIES.



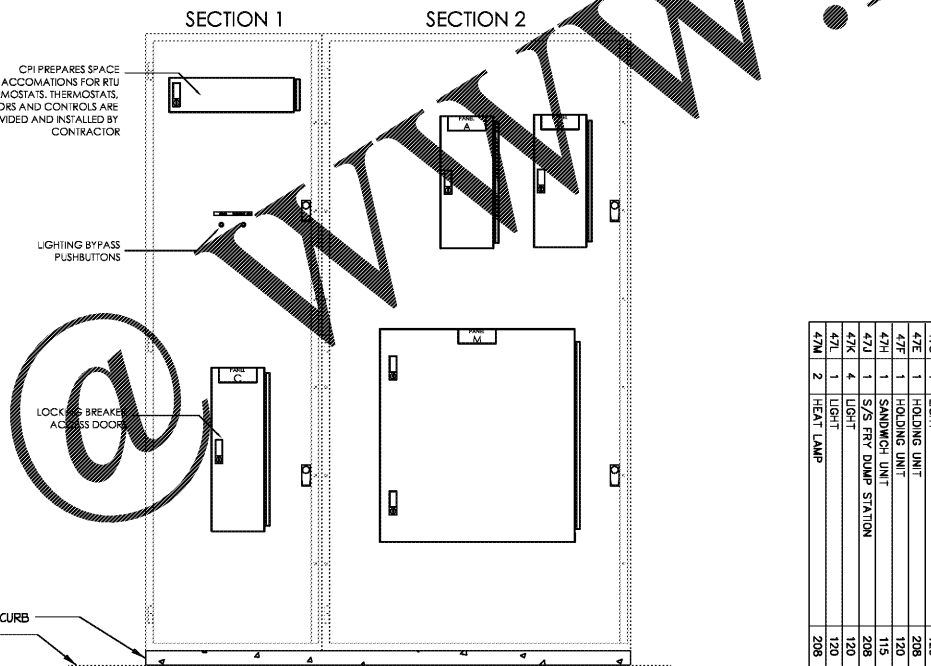
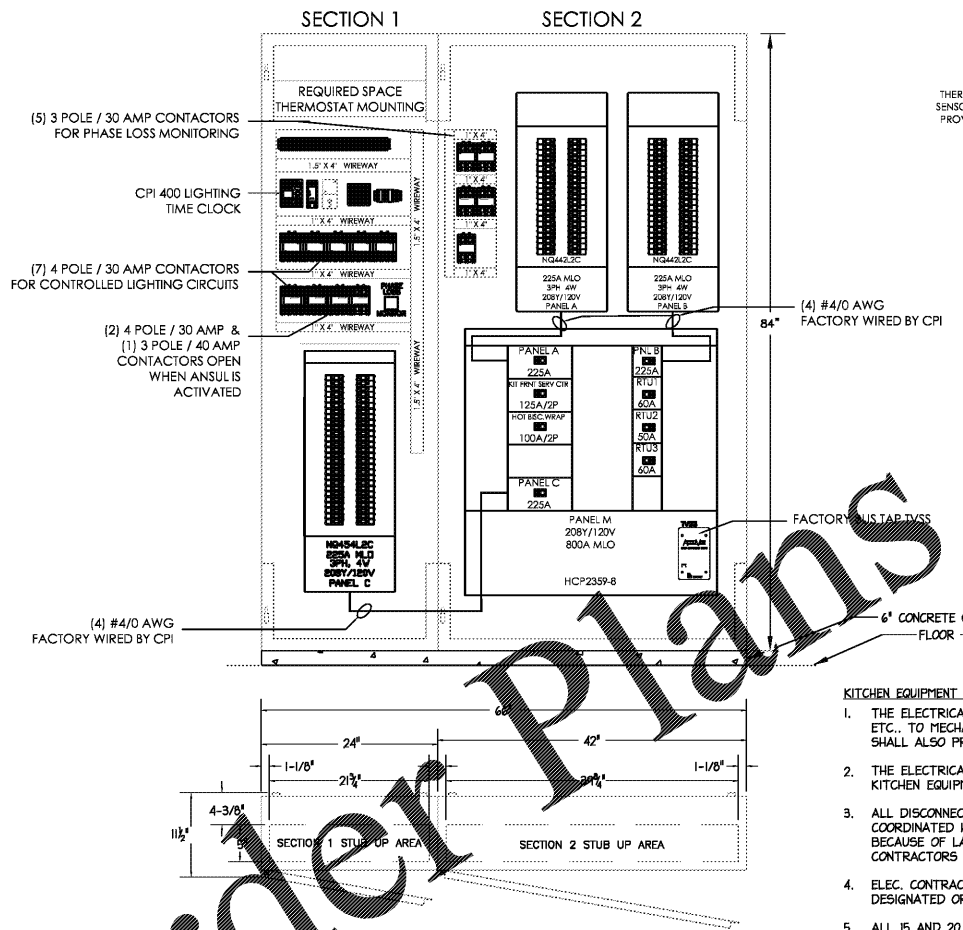
1 GROUNDING DETAIL



2 POWER RISER DIAGRAM



3 SYSTEM DETAILS



- #### KITCHEN EQUIPMENT NOTES:
- THE ELECTRICAL CONTRACTOR SHALL PROVIDE AND INSTALL ALL DISCONNECT SWITCHES, RECEPTACLES, ETC., TO MECHANICAL/ PLUMBING AND KITCHEN EQUIPMENT AS REQUIRED. THE ELECTRICAL CONTRACTOR SHALL ALSO PROVIDE ALL CORDS, PLUGS, ETC. ON EQUIPMENT REQUIRING SUCH ITEMS.
 - THE ELECTRICAL CONTRACTOR SHALL PROVIDE FINAL CONNECTIONS TO ALL MECHANICAL/ PLUMBING AND KITCHEN EQUIPMENT AS REQUIRED.
 - ALL DISCONNECT SWITCHES, FUSE SIZES, PLUG CONFIGURATIONS, BREAKER SIZES, ETC., SHALL BE COORDINATED WITH SHOP DRAWINGS PRIOR TO INSTALLING. ANY EQUIPMENT INSTALLED INCORRECTLY BECAUSE OF LACK OF COORDINATION WILL BE REMOVED AND INSTALLED CORRECTLY AT THE ELECTRICAL CONTRACTORS EXPENSE.
 - ELEC. CONTRACTOR SHALL PULL A GROUND AND A NEUTRAL WITH ALL CIRCUITS, WHETHER SO DESIGNATED OR NOT.
 - ALL 15 AND 20 AMP RECEPTACLES IN KITCHEN SHALL BE GFI.
 - F- DENOTES: FIELD ELECTRICIAN TO MAKE FINAL CONNECTION OR CONNECT CORD AND PLUG SET AT EACH UNIT FROM CONDUIT BROUGHT DOWN IN CHASE/HALL. IN ADDITION, HE IS TO MAKE FIELD CONNECTIONS AS REQUIRED FOR UNIT; SEE MANUFACTURER'S DRAWINGS FOR DETAILS.

ALL EXPOSED CONDUIT BELOW CEILING SHALL BE ENCLOSED WITH FRP.