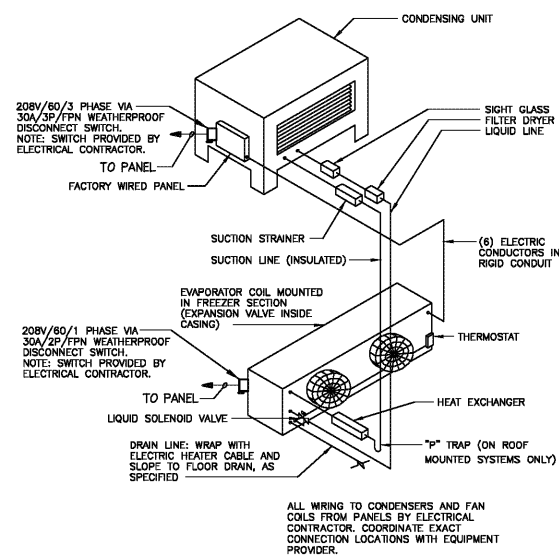
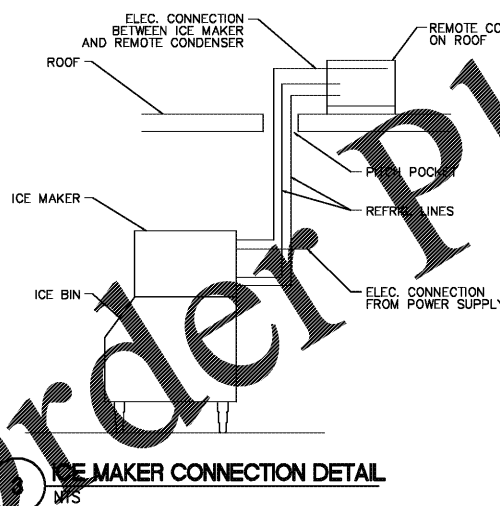


1 COOLER ELEC./REFRIG. DETAIL
NTS (WALK-IN COOLER)



2 FREEZER ELEC./REFRIG. DETAIL
NTS (WALK-IN CHICKEN COOLER AND FREEZER)



3 ICE MAKER CONNECTION DETAIL
NTS

NOTE: FIELD ELECTRICIAN TO MAKE FINAL CONNECTION OR CONNECT CORD & PLUG SET AT EACH UNIT FROM CONDUIT BROUGHT DOWN IN CHASE/WALL. IN ADDITION, HE IS TO MAKE FIELD CONNECTIONS AS REQUIRED FOR UNIT; SEE MANUFACTURER'S DRAWINGS FOR DETAILS.

VOLTAGE: 208Y/120V
AMPS: 600A MLO

NEW PANEL: M 3 PHASE 4 WIRE SURFACE MOUNTED

| DESCRIPTION | POL | WIRE SIZE | BKR SIZE | LOAD PER PHASE | | | CCT | WIRE SIZE | BKR SIZE | POLE | DESCRIPTION | | |
|------------------------------|-----|-----------|----------|----------------|------|------|-----|-----------|----------|-------------------|---------------------------|--|--|
| | | | | A | B | C | | | | | | | |
| PANEL 'A' | 3 | 3/0 | 200 | 42.0 | 41.1 | 42.0 | 2 | 200 | 3/0 | 3 | PANEL 'B' | | |
| KIT-FRONT SERV CNTR (E-21) | 2 | 1/0 | 125 | 4.4 | 7.3 | 4.4 | 4 | 80 | 3 | 3 | RTU-1 | | |
| KIT-BISCUIT WRAP UNIT (E-47) | 2 | 3/0 | 200 | 2.3 | 4.1 | 2.3 | 6 | 60 | 4 | 3 | RTU-2 | | |
| PANEL 'C' | 3 | 3/0 | 200 | 12.1 | 11.1 | 12.1 | 7 | 60 | 4 | 3 | RTU-2 | | |
| KIT-TOGO STATION (E-29) | 2 | 1/0 | 125 | 7.0 | 2.3 | 7.0 | 4 | 40 | 6 | 3 | KIT-EGG GRIDDLE (E-84) ST | | |
| SPACE | 1 | - | - | - | - | - | - | - | - | 1 | SPACE | | |
| SPACE | 1 | - | - | - | - | - | - | - | - | 1 | SPACE | | |
| SPACE | 1 | - | - | - | - | - | - | - | - | 1 | SPACE | | |
| TOTAL CONNECTED KVA | | | | 69.4 | 67.8 | 69.5 | | | | DEMAND KVA: 185.4 | | | |
| PANEL RMS SYM. AMPS: | | | | 42,000 | | | | | | | DEMAND AMPS: 515.0 | | |

* - SEE POWER RISER SHEET E-4 FOR CONDUCTOR SIZE
- PROVIDE ISOLATED GROUND BUS FOR PANEL.
ST - SHUNT TRIP VIA CONTACTOR. SEE SHEET E6 AND E7 FOR DETAILS.

PANEL 'M' LOAD SUMMARY

| LOAD TYPE | KVA CONN | DEM FACT | KVA DEM | |
|----------------------|---------------|----------|---------|------|
| LIGHTS | 23.9 | 1.25 | 29.9 | |
| RECEPTACLES | 1ST 10KVA | 7.1 | 1.0 | 7.1 |
| | REMAINDER | - | 0.5 | - |
| HVAC | LARGEST MOTOR | 21.9 | 1.25 | 27.4 |
| | REMAINDER | 18.3 | 1.0 | 18.3 |
| WATER HEATERS | | - | 1.25 | - |
| KITCHEN EQUIPMENT | 93.8 | 0.65 | 61.0 | |
| LAUNDRY EQUIPMENT | - | 1.0 | - | |
| EQUIPMENT | 41.7 | 1.0 | 41.7 | |
| MISCELLANEOUS | - | 1.0 | - | |
| TOTALS | 206.7 | | 185.4 | |
| TOTAL AMPS @ 208V 3Ø | 515 | | | |

VOLTAGE: 208Y/120V
AMPS: 225A MLO

NEW PANEL: B 3 PHASE 4 WIRE SURFACE MOUNTED

| DESCRIPTION | POL | WIRE SIZE | BKR SIZE | LOAD PER PHASE | | | CCT | WIRE SIZE | BKR SIZE | POLE | DESCRIPTION | | |
|----------------------------|-----|-----------|----------|----------------|-----|-----|-----|-----------|----------|------|------------------------------|-------------------|--|
| | | | | A | B | C | | | | | | | |
| EQ-CLR./FRZ. HT/LTS (E-84) | 1 | 12 | 20 | 1.4 | 0.9 | 1.4 | 2 | 20 | 12 | 1 | EQ-TIMERS (E-50B/51B) ST | | |
| EQ-CLR./FRZ. HT/LTS (E-86) | 1 | 12 | 20 | 1.4 | 0.9 | 1.4 | 2 | 20 | 12 | 1 | SPARE | | |
| EQ-CLR./FRZ. HT/LTS (E-87) | 1 | 12 | 20 | 1.4 | 0.9 | 1.4 | 2 | 20 | 12 | 1 | REC-BUG LIGHT | | |
| EQ-MED TEMP COIL (E-88A) | 1 | 12 | 15 | 0.5 | 0.4 | 0.5 | 1 | 15 | 12 | 1 | REC-CONVENIENCE (E-C03) GFI | | |
| EQ-LOW TEMP COIL (E-87A) | 1 | 12 | 20 | 1.1 | 0.2 | 1.1 | 2 | 20 | 12 | 1 | KEF-3 (E-51A) GFI | | |
| KIT-MARINATOR (E-87C) | 1 | 12 | 20 | 0.8 | 0.8 | 0.8 | 1 | 20 | 12 | 1 | EQ-KEF-3 (E-50A) GFI | | |
| EQ-BAG-IN-BOX (E-89) | 1 | 12 | 20 | 0.8 | 0.8 | 0.8 | 1 | 20 | 12 | 1 | REC-ROOF TOP/EF-2 | | |
| KIT-ICE MACHINE (E-94) | 2 | 10 | 20 | 1.4 | 0.5 | 1.4 | 2 | 20 | 12 | 1 | LTS/REC-EXT. STOR. BLD. | | |
| REC-TAPE (E-89A.1) | 1 | 12 | 20 | 0.8 | 0.5 | 0.8 | 2 | 20 | 12 | 1 | EQ-IRRIGATION CONTROLLER | | |
| REC-FAN (E-107) | 1 | 12 | 20 | 0.8 | 0.5 | 0.8 | 2 | 20 | 12 | 1 | EQ-COM/ORDER SYSTEM GFI | | |
| KIT-COFFEE BREAKER (E-35K) | 2 | 10 | 20 | 1.5 | 1.2 | 1.5 | 2 | 20 | 12 | 1 | EQ-WIRELESS PHONE SYSTEM GFI | | |
| KIT-COFFEE BREAKER (E-35K) | 2 | 10 | 20 | 1.5 | 1.1 | 1.5 | 2 | 20 | 12 | 1 | EQ-P.A. SYSTEM GFI | | |
| REC-PUMP | 1 | 12 | 20 | 0.8 | 0.5 | 0.8 | 2 | 20 | 12 | 1 | EQ-SECURITY SYSTEM GFI | | |
| REC-PUMP | 1 | 12 | 20 | 0.8 | 0.5 | 0.8 | 2 | 20 | 12 | 1 | EQ-LOW TEMP COIL (E-89A) GFI | | |
| KSF-1 (E-50F) | 3 | 12 | 20 | 1.1 | 0.3 | 1.1 | 2 | 20 | 12 | 1 | TEA TIMER (E-101) GFI | | |
| L FACP/DUCT DETECTORS* | 1 | 12 | 20 | 1.2 | 1.1 | 1.2 | 4 | 40 | 15 | 12 | 3 | KEF-2 (E-52A) GFI | |
| TOTAL CONNECTED KVA | | | | 34.1 | | | | | | | DEMAND KVA: 34.1 | | |
| PANEL RMS SYM. AMPS: | | | | 22,000 | | | | | | | DEMAND AMPS: 95 | | |

L - PROVIDE LOCK-ON ATTACHMENT FOR BREAKER.
- THIS CIRCUIT IS FOR THE FIRE ALARM CONTROL IF BUILDING IS SPRINKLERED AND FOR THE DUCT DETECTORS IF BUILDING IS NOT SPRINKLERED.
ST - SHUNT TRIP VIA CONTACTOR. SEE SHEET E6 AND E7 FOR DETAILS.
GFI - PROVIDE GFI BREAKER.

VOLTAGE: 208Y/120V
AMPS: 225A MLO

NEW PANEL: A 3 PHASE 4 WIRE SURFACE MOUNTED

| DESCRIPTION | POL | WIRE SIZE | BKR SIZE | LOAD PER PHASE | | | CCT | WIRE SIZE | BKR SIZE | POLE | DESCRIPTION | | |
|------------------------------|-----|-----------|----------|----------------|-----|-----|-----|-----------|----------|------|----------------------------------|--|--|
| | | | | A | B | C | | | | | | | |
| EQ-HAND DRYERS (E-7) | 2 | 10 | 20 | 1.2 | 1.2 | 1.2 | 2 | 20 | 12 | 1 | KIT-CONV OVEN (E-53) GFI/ST | | |
| EQ-HAND DRYERS (E-7) | 2 | 10 | 20 | 1.2 | 1.2 | 1.2 | 2 | 20 | 12 | 1 | REFR EQ STAND (E-81) GFI/ST | | |
| EQ-COFFEE BREAKER (E-17H) | 2 | 10 | 20 | 1.5 | 1.1 | 1.5 | 2 | 20 | 12 | 1 | KIT-FRYER FILTER (E-80) GFI/ST | | |
| | | | | 7 | 1.8 | 7 | 2 | 20 | - | 1 | SPARE | | |
| GFI KIT-MARINATOR (E-87C) | 1 | 12 | 20 | 0.8 | 0.8 | 0.8 | 1 | 20 | 12 | 1 | KIT-U/C COOLER (E-65) GFI | | |
| GFI EQ-SODA TOWER (E-17L) | 1 | 12 | 20 | 0.8 | 0.8 | 0.8 | 1 | 20 | 12 | 1 | EQ-HD LTS/CNTRLS (E-50) GFI | | |
| ICE MAKER (E-17D) | 2 | 12 | 20 | 1.8 | 0.3 | 1.8 | 2 | 20 | 12 | 1 | KIT-BREAD MACHINE (E-68) GFI | | |
| | | | | 10 | 0.6 | 10 | 2 | 20 | 12 | 1 | KIT-HOT HOLD CAB (E-90) GFI | | |
| GFI/IG EQ-POS SYSTEM (E-35D) | 1 | 12 | 20 | 1.0 | 0.6 | 1.0 | 2 | 20 | 12 | 1 | REC-CONVENIENCE (E-C01) GFI | | |
| GFI GAS WATER HEATER | 1 | 12 | 20 | 0.5 | 0.4 | 0.5 | 1 | 20 | 12 | 1 | KIT-FRYER CONTROLS (E-76) GFI/ST | | |
| GFI GAS WATER HEATER | 1 | 12 | 20 | 0.5 | 0.5 | 0.5 | 1 | 20 | 12 | 1 | REC-TAPE (E-89A.1) GFI/ST | | |
| GFI GAS WATER HEATER | 1 | 12 | 20 | 0.5 | 0.5 | 0.5 | 1 | 24 | 20 | 12 | KIT-FRYER FILTER (E-80) GFI/ST | | |
| GFI KIT-SODA TOWER (E-35F) | 1 | 12 | 20 | 0.5 | 0.4 | 0.5 | 1 | 20 | 12 | 1 | EQ-LOW TEMP COIL (E-87B) GFI | | |
| KIT-WATER DISPENSER (E-60) | 2 | 6 | 50 | 27 | 0.4 | 27 | 15 | 15 | 12 | 3 | EQ-LOW TEMP COIL (E-87B) GFI | | |
| GFI KIT-WORK TOP FRZR (E-64) | 1 | 12 | 20 | 1.3 | 0.5 | 1.3 | 2 | 20 | 12 | 1 | PYLON RECEPTACLE | | |
| EQ-HD LTS/CNTRLS (E-50) | 1 | 12 | 20 | 1.2 | 0.5 | 1.2 | 2 | 20 | 12 | 1 | SPARE | | |
| D/T WINDOW OPERATOR | 1 | 12 | 20 | 0.8 | 0.5 | 0.8 | 2 | 20 | 12 | 1 | SPARE | | |
| GFI POS MONITORS | 1 | 12 | 20 | 0.4 | 1.2 | 0.4 | 2 | 20 | 12 | 1 | SPARE | | |
| EQ-HD LTS/CNTRLS (E-50) | 1 | 12 | 20 | 1.2 | 0.5 | 1.2 | 2 | 20 | 12 | 1 | EQ-LOW TEMP COIL (E-84B) GFI/ST | | |
| KIT-CONV OVN (E-53) | 1 | 12 | 20 | 1.2 | 0.4 | 1.2 | 2 | 20 | 12 | 1 | SPARE | | |
| TOTAL CONNECTED KVA | | | | 14.2 | | | | | | | DEMAND KVA: 37.3 | | |
| PANEL RMS SYM. AMPS: | | | | 22 | | | | | | | DEMAND AMPS: 104 | | |

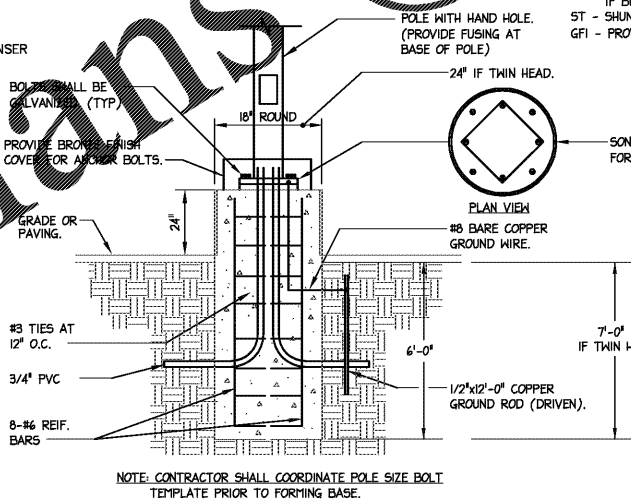
ST - SHUNT TRIP VIA CONTACTOR. SEE SHEET E6 AND E7 FOR DETAILS.
IG - INDICATES PROVIDE ISOLATED GROUND WIRE AND DEDICATED NEUTRAL.
GFI - PROVIDE GFI BREAKER.

VOLTAGE: 208Y/120V
AMPS: 225A MLO

NEW PANEL: C 3 PHASE 4 WIRE SURFACE MOUNTED

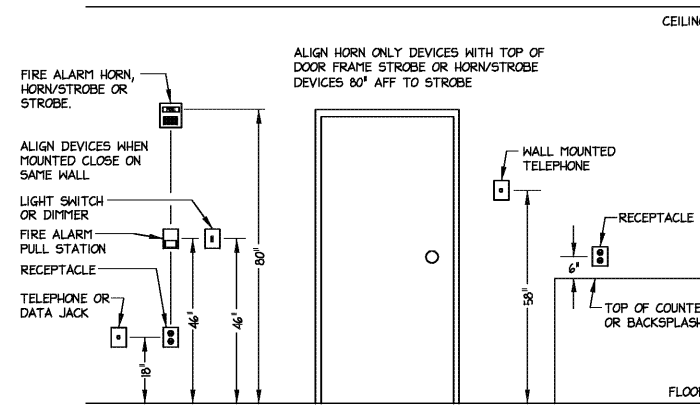
| DESCRIPTION | POL | WIRE SIZE | BKR SIZE | LOAD PER PHASE | | | CCT | WIRE SIZE | BKR SIZE | POLE | DESCRIPTION | | |
|------------------------|-----|-----------|----------|----------------|------|------|-----|-----------|----------|------------------|----------------------------|---------------------------|--|
| | | | | A | B | C | | | | | | | |
| LTS-DINING RM | 1 | 12 | 20 | 1.4 | 0.9 | 1.4 | 2 | 20 | 12 | 1 | REC-DINING AREA | | |
| LTS-FRONT SERVER LTS | 4 | 12 | 20 | 1.2 | 0.8 | 1.2 | 4 | 20 | 12 | 1 | REC-DINING AREA | | |
| LTS-DINING RM | 1 | 12 | 20 | 1.4 | 0.9 | 1.4 | 2 | 20 | 12 | 1 | REC-KITCHEN (E-C02) GFI | | |
| LTS-FAN TOILETS | 6 | 12 | 20 | 0.6 | 1.2 | 0.6 | 6 | 20 | 12 | 1 | LTS-FRONT LINE MENU BRD IG | | |
| LTS-DINING NIGHT LTS | 1 | 12 | 20 | 1.4 | 0.9 | 1.4 | 2 | 20 | 12 | 1 | REC-OFFICE | | |
| LTS-KITCHEN | 1 | 12 | 20 | 1.4 | 0.9 | 1.4 | 2 | 20 | 12 | 1 | REC-OFFICE | | |
| LTS-KITCHEN NIGHT LTS | 1 | 12 | 20 | 1.4 | 0.9 | 1.4 | 2 | 20 | 12 | 1 | REC-OFFICE | | |
| LTS-DINING RM | 1 | 12 | 20 | 1.4 | 0.9 | 1.4 | 2 | 20 | 12 | 1 | REC-CONVENIENCE (E-C02) IG | | |
| LTS-D/T CAN, SIDE WALL | 1 | 12 | 20 | 0.8 | 0.3 | 0.8 | 2 | 20 | 12 | 1 | LTS-EXTERIOR SECURITY GFI | | |
| LTS-MENU BOARD | 1 | 10 | 20 | 1.2 | - | 1.2 | 2 | 20 | - | 1 | SPARE | | |
| LTS-EXT SITE SIGNS | 2 | 8 | 30 | 1.8 | 0.3 | 1.8 | 2 | 20 | 12 | 1 | LTS-REAR/SIDE WALL | | |
| SITE LTS | 2 | 8 | 30 | 1.8 | 1.0 | 1.8 | 2 | 20 | 12 | 1 | LTS-EXT SITE SIGNS | | |
| SITE LTS | 2 | 8 | 30 | 1.8 | 1.0 | 1.8 | 2 | 20 | 12 | 1 | LTS-EXT SITE SIGNS | | |
| SITE LTS | 2 | 8 | 30 | 1.8 | 1.2 | 1.8 | 2 | 20 | 10 | 1 | LTS-PYLON SIGN | | |
| SITE LTS | 2 | 8 | 30 | 1.8 | 1.2 | 1.8 | 2 | 20 | 10 | 1 | LTS-PYLON SIGN | | |
| SITE LTS | 2 | 8 | 30 | 1.8 | 0.2 | 1.8 | 2 | 15 | 12 | 1 | CPI LTG. | | |
| LTS-EXTERIOR LTS | 1 | 12 | 20 | 0.6 | 0.2 | 0.6 | 2 | 15 | 12 | 1 | ANSUL POWER (E-50C) | | |
| SPARE | 1 | - | 20 | - | - | - | 2 | 35 | 15 | 12 | 3 | EQ-MED TEMP COND. (E-88B) | |
| HOT BOX | 1 | 10 | 20 | 0.5 | 0.6 | 0.5 | 2 | 35 | 15 | 12 | 3 | EQ-MED TEMP COND. (E-88B) | |
| SPARE | 1 | - | 20 | - | - | - | 2 | 40 | - | - | - | LTS-EXT SITE SIGNS | |
| SPARE | 1 | - | 20 | - | - | - | 2 | 40 | - | - | - | LTS-EXT SITE SIGNS | |
| TOTAL CONNECTED KVA | | | | 13.2 | 11.1 | 12.1 | | | | DEMAND KVA: 36.4 | | | |
| PANEL RMS SYM. AMPS: | | | | 22,000 | | | | | | | DEMAND AMPS: 101 | | |

- WIRE VIA SITE LIGHTING CONTACTORS PROVIDED IN POWER GEAR. COORDINATE ON/OFF TIMES WITH OWNER. SEE SITE CIVIL PLANS FOR LOCATIONS AND QUANTITIES.
ST - SHUNT TRIP VIA CONTACTOR. SEE SHEET E6 AND E7 FOR DETAILS.
IG - INDICATES PROVIDE ISOLATED GROUND WIRE AND DEDICATED NEUTRAL.
GFI - PROVIDE GFI BREAKER.
- ROUTE CIRCUIT THRU 400W 90 MINUTE BATTERY INVERTER MOUNTED ABOVE THE ELECTRICAL PANELS. BATTERY INVERTER TO BE EQUIVALENT TO BODINE #ELI-S-400.

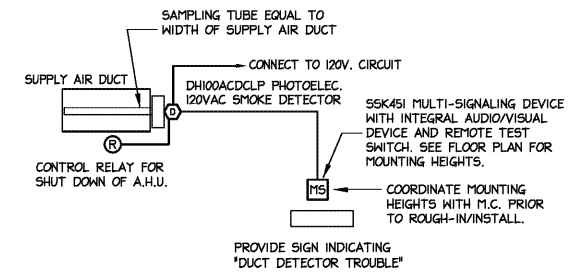


4 POLE BASE DETAIL
NO SCALE

NOTE: VERIFY POLE BASE REQUIREMENTS WITH POLE MANUFACTURER.



5 TYPICAL DEVICE MOUNTING HEIGHTS
1/2" = 1'-0"



6 DUCT DETECTOR MOUNTING DETAIL
DIAGRAMMATIC ONLY

DUCT DETECTOR # MULTI-SIGNALING ACCESSORY MODEL NUMBERS ARE FROM SYSTEM SENSOR.
ALL EQUIPMENT AND INSTALLATION SHALL COMPLY WITH THE LATEST LOCAL CODES.
SMOKE DETECTOR TO BE SUPPLIED BY EC TO MC FOR INSTALLATION INTO DUCTWORK. EC TO PROVIDE, WIRE AND TEST OPERATION OF DETECTOR AND NOTIFICATION DEVICES.
SEE MECHANICAL PLANS FOR LOCATION OF A/V DEVICES.
THE ARCHITECT/ENGINEER DOES NOT DEFINE THE SCOPE OF INDIVIDUAL TRADES, SUBCONTRACTORS, MATERIAL SUPPLIERS, OR VENDORS. ANY SHEET NUMBERING SYSTEM USED WHICH IDENTIFIES DISCIPLINES IS SOLELY TO SEPARATE ARCHITECTS AND ENGINEERS' SCOPE. IT DOES NOT DEFINE A SUBCONTRACTOR'S SCOPE OF WORK. ANY DISCREPANCIES BETWEEN DRAWINGS, SPECIFICATIONS, CODES OR CONSTRUCTION SEQUENCING SHALL BE BROUGHT TO THE ATTENTION OF THE ARCHITECT PRIOR TO PROCEEDING. NO CONSIDERATION WILL BE GIVEN TO REQUESTS FOR CHANGE ORDERS FOR FAILURE TO OBTAIN AND REVIEW THE COMPLETE SET OF CONSTRUCTION DOCUMENTS, OR FOR FAILURE TO SEEK INTERPRETATION FROM ARCHITECT FOR DISCREPANCIES.

NOT FOR CONSTRUCTION
PRELIM-BUDGET

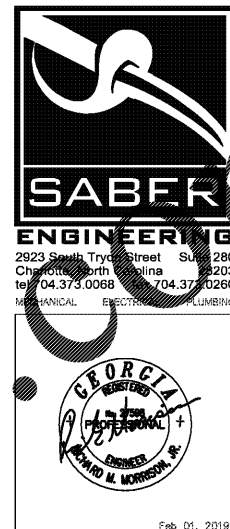
BOJANGLES' 14 RESTAURANT
HUDSON BRIDGE ROAD
AT WILLIS DRIVE
STOCKBRIDGE, GEORGIA

NOT FOR CONSTRUCTION
PRELIM-BUDGET

ISSUE DATE: 02-08-2019
REVISION 1: ---
REVISION 2: ---
REVISION 3: ---
REVISION 4: ---
PROJECT #: 18-164-000
CONTENT: ELECTRICAL PANEL SCHEDULES

PROJECT ENGINEER: SABER
DRAWN BY: RPL
CADD FILE NAME: ESD-1901-14-E06.dwg

THIS DRAWING AND THE DESIGN SHOWN ARE THE PROPERTY OF BOJANGLES RESTAURANTS, INC. THE REPRODUCTION OR USE OF THIS DRAWING WITHOUT THEIR WRITTEN CONSENT IS SUBJECT TO LEGAL ACTION.



421 Penman Street, Suite 200, Charlotte, NC 28203
Email: esd@esdarch.com • Phone: 704-373-1900

Order Plans @