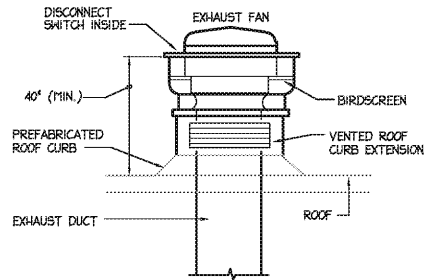
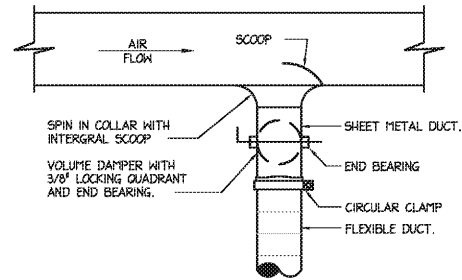


NOTE:  
KITCHEN HOOD MAKE-UP AIR FAN INTAKE SHALL BE A MINIMUM OF 10'-0" AWAY FROM KITCHEN HOOD EXHAUST FAN.

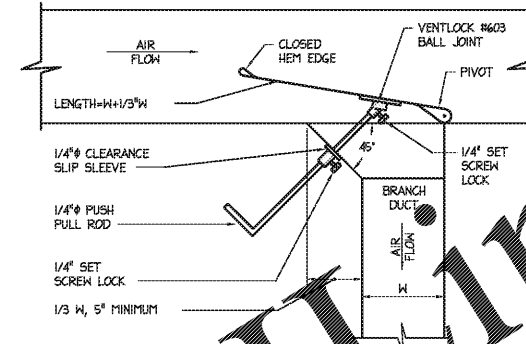


1 KITCHEN HOOD EXHAUST FAN DETAIL  
NO SCALE



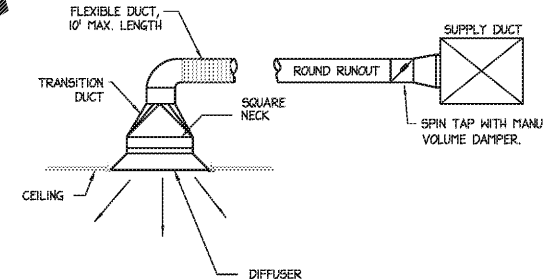
- NOTES:
1. SEE FLOOR PLANS AND SPECIFICATIONS FOR DUCT INSULATION REQUIREMENTS.
  2. TAP OFF TOP/SIDE/BOTTOM OF DUCT AS REQUIRED.

2 BRANCH TAKEOFF TO SINGLE OUTLET  
NO SCALE



- NOTES:
1. SEE FLOOR PLANS AND SPECIFICATIONS FOR DUCT INSULATION REQUIREMENTS.
  2. TAP OFF TOP/SIDE/BOTTOM OF DUCT AS REQUIRED.

3 BRANCH TAKEOFF TO MULTIPLE OUTLETS  
NO SCALE

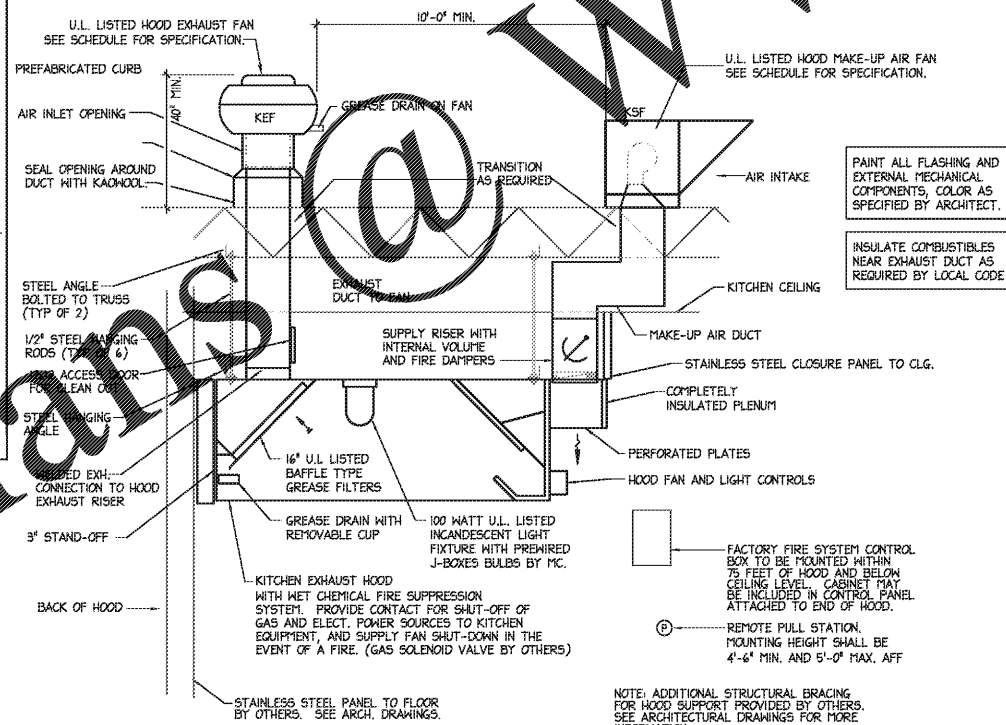


4 SUPPLY GRILLE DETAIL  
NO SCALE

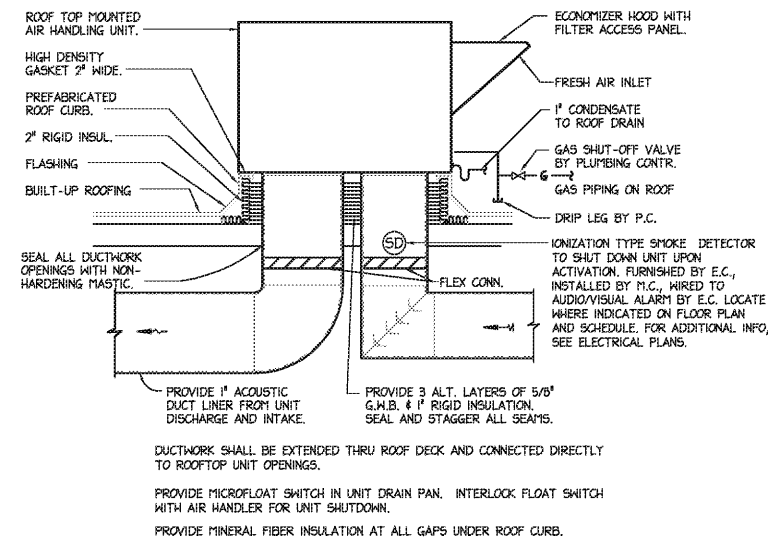
- ### KITCHEN HOOD NOTES
1. KITCHEN EXHAUST DUCT TO BE CONSTRUCTED OF 16 GAUGE BLACK IRON W/CONTINUOUS EXTERNAL LIQUID-TIGHT WELDS.
  2. SLOPE EXHAUST DUCT 1\"/>

### KITCHEN HOOD FIRE SUPPRESSION SYSTEM

PROVIDE A PRE-ENGINEERED, WET CHEMICAL, CARTRIDGE OPERATED TYPE FIRE SUPPRESSION SYSTEM. IT SHALL BE A FIXED NOZZLE AGENT DISTRIBUTION NETWORK, AND SHALL BE UL LISTED. THE SYSTEM SHALL BE CAPABLE OF AUTOMATIC DETECTION AND REMOTE ACTUATION. THE SYSTEM SHALL BE IN ACCORDANCE WITH NFPA 96 AND ANY LOCAL JURISDICTION. DISCHARGE NOZZLES WILL PROVIDE COVERAGE TO NOT LESS THAN THE HOOD AREA AND EXHAUST DUCT. FURNISH ELECTRICAL OPERATED SHUT-OFF VALVE. THE SYSTEM SHALL BE AN ANSUL MODEL R-102 OR APPROVED EQUAL.



5 TYPE I KITCHEN HOOD SCHEMATIC  
NO SCALE



6 GAS ROOFTOP UNIT  
NO SCALE

NOT FOR CONSTRUCTION  
PRELIM-BUDGET

BOJANGLES' 14 RESTAURANT  
HUDSON BRIDGE ROAD  
AT WILLIS DRIVE  
STOCKBRIDGE, GEORGIA

NOT FOR CONSTRUCTION  
PRELIM-BUDGET

ISSUE DATE: 02-08-2019  
REVISION 1: \_\_\_\_\_  
REVISION 2: \_\_\_\_\_  
REVISION 3: \_\_\_\_\_  
REVISION 4: \_\_\_\_\_  
PROJECT #: 18-164-000  
CONTENT: MECHANICAL DETAILS  
PROJECT ENGINEER: SABER  
DRAWN BY: \_\_\_\_\_  
CADD FILE NAME: ESD-1901-14-M03.dwg

THIS DRAWING AND THE DESIGN SHOWN ARE THE PROPERTY OF BOJANGLES RESTAURANTS, INC. THE REPRODUCTION OR USE OF THIS DRAWING WITHOUT THEIR WRITTEN CONSENT IS PROHIBITED. ANY INFRINGEMENT IS SUBJECT TO LEGAL ACTION.