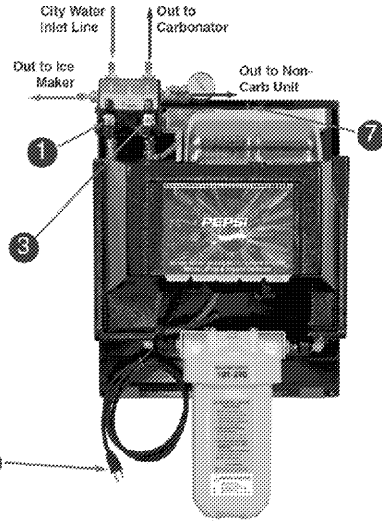
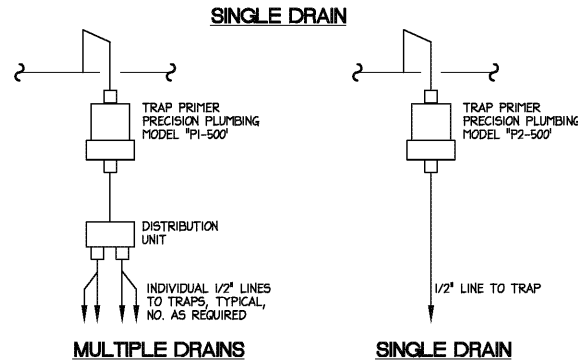
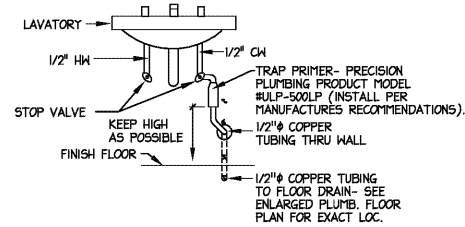


**START-UP PROCEDURE**

1. Connect incoming 3/8" City Water supply line and ice maker supply line to City Water Inlet Shut-Off Valve (1) using Oetiker clamps of the proper size and quantity per tubing manufacturer's recommendations.
2. Connect 3/8" Carbonator and Non-Carb food lines to Boosted/Filtered Water Shut-Off Valve (2) using Oetiker clamps of the proper size and quantity per tubing manufacturer's recommendations.
3. Turn on City Water supply.
4. Turn on City Water Inlet Shut-Off Valve (1).
5. Locate Purge Valve (7) and supplied purge tubing.
6. Un-coil purge line and put into 5 gallon bucket or drain.
7. Open Purge Valve (7).
8. Plug in water booster pump (8) on WBMF system.
9. Continue to purge until all air is evacuated from WBMF system, and only water is coming out of purge line.
10. Turn Purge Valve (7) "OFF" and re-coil purge line tubing secure to system.
11. Turn on Boosted/Filtered Water Shut-Off Valve (2) to supply carbonator and non-carb beverage system.
12. Check for proper operation of ice maker, carbonator, and non-carb valves.

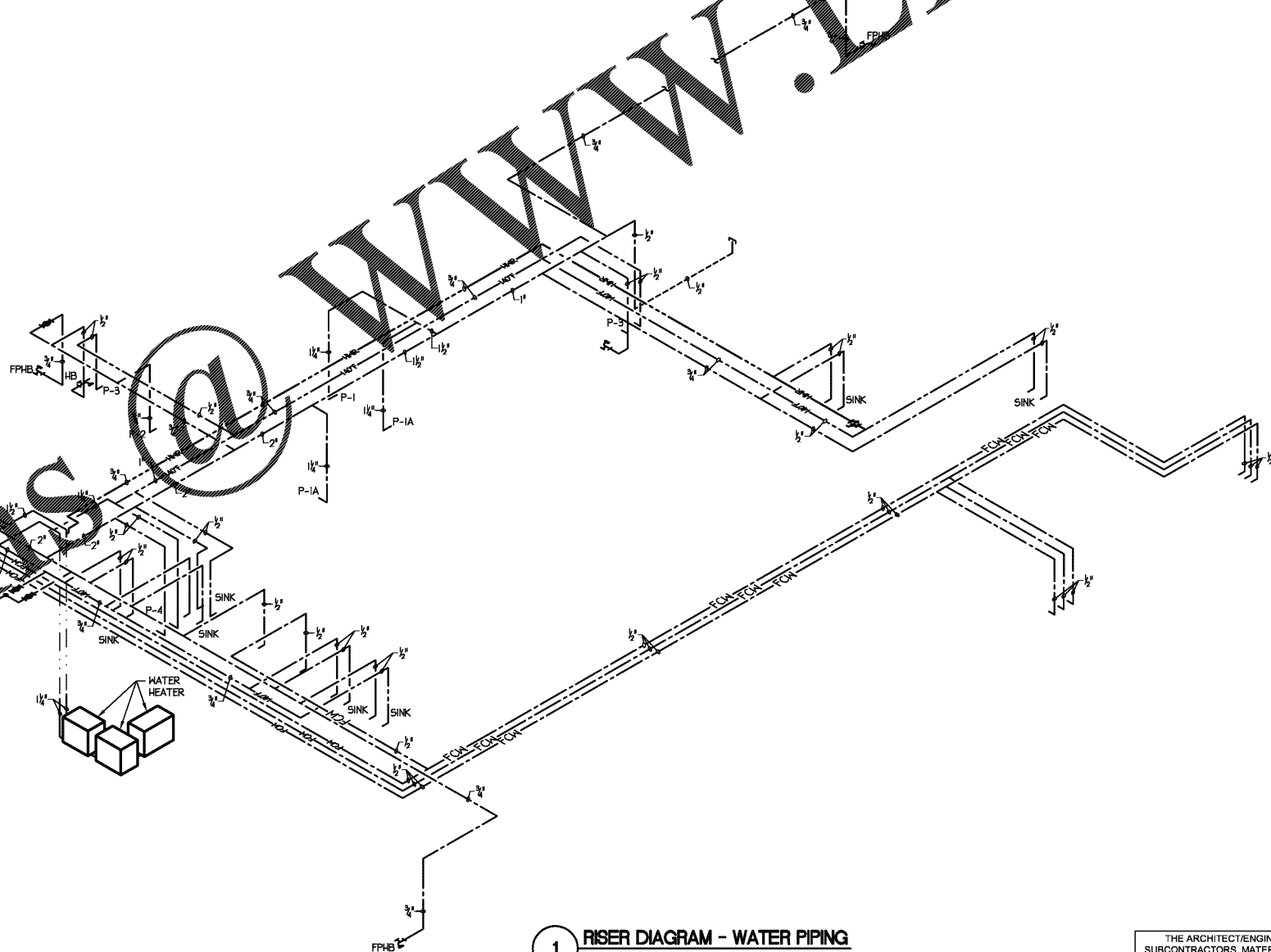


**2 WATER FILTER**  
NOT TO SCALE



**3 TRAP PRIMER DETAILS**  
NO SCALE  
NOTE: TRAP PRIMERS SHALL MEET ASSE 1016 STANDARD.

2" CW UP ALONG WALL. PROVIDE SHUTOFF VALVE 18" AFF.



**1 RISER DIAGRAM - WATER PIPING**  
NOT TO SCALE

THE ARCHITECT/ENGINEER DOES NOT DEFINE THE SCOPE OF INDIVIDUAL TRADES, SUBCONTRACTORS, MATERIAL SUPPLIERS, OR VENDORS. ANY SHEET NUMBERING SYSTEM USED WHICH IDENTIFIES DISCIPLINES IS SOLELY TO SEPARATE ARCHITECT'S AND ENGINEER'S SCOPE; IT DOES NOT DEFINE A SUBCONTRACTOR'S SCOPE OF WORK. ANY DISCREPANCIES BETWEEN DRAWINGS, SPECIFICATIONS, CODES OR CONSTRUCTION SEQUENCING SHALL BE BROUGHT TO THE ATTENTION OF THE ARCHITECT PRIOR TO PROCEEDING. NO CONSIDERATION WILL BE GIVEN TO REQUESTS FOR CHANGE ORDERS FOR FAILURE TO OBTAIN AND REVIEW THE COMPLETE SET OF CONSTRUCTION DOCUMENTS, OR FOR FAILURE TO SEEK INTERPRETATION FROM ARCHITECT FOR DISCREPANCIES.

**SABER ENGINEERING**  
2923 South Tryon Street Suite 280  
Charlotte, North Carolina 28203  
Tel: 704.374.0068 Fax: 704.374.0260  
MECHANICAL ELECTRICAL PLUMBING

**GEORGIA REGISTERED PROFESSIONAL ENGINEER**  
MAKES A. TRESBEE

Feb 01, 2019

architecture - interior design  
421 Penman Street, Suite 200, Charlotte, NC 28203  
Email: esd@esdarch.com • Phone: 704-373-1900

NOT FOR CONSTRUCTION PRELIM-BUDGET

**BOJANGLES' 14 RESTAURANT**  
HUDSON BRIDGE ROAD  
AT WILLIS DRIVE  
STOCKBRIDGE, GEORGIA

NOT FOR CONSTRUCTION PRELIM-BUDGET

ISSUE DATE: 02-08-2019  
REVISION 1: ---  
REVISION 2: ---  
REVISION 3: ---  
REVISION 4: ---  
PROJECT #: 18-164-000  
CONTENT: PLUMBING  
RISER DIAGRAM  
WATER PIPING  
PROJECT ENGINEER: SABER  
DRAWN BY: SABER  
CADD FILE NAME: ESD-1901-14-P07.dwg

THIS DRAWING AND THE DESIGN SHOWN ARE THE PROPERTY OF BOJANGLES RESTAURANTS, INC. THE REPRODUCTION OR USE OF THIS DRAWING WITHOUT THEIR WRITTEN CONSENT IS PROHIBITED. ANY INFRINGEMENT IS SUBJECT TO LEGAL ACTION.

Sheet  
**P-7**