

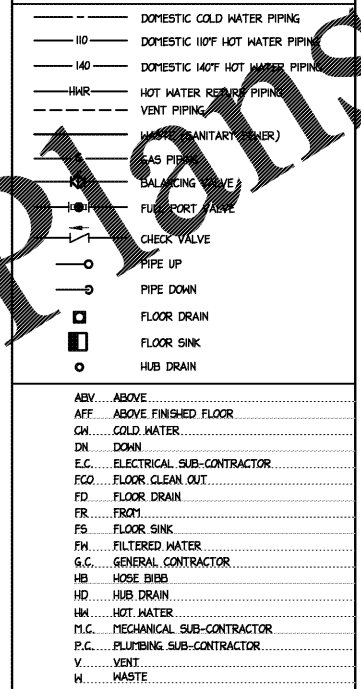
MARK	FIXTURE	TYPE	MANUFACTURER	MODEL NO.	MATERIAL	STYLE	FAUCET/VALVE				DRAIN		SUPPLIES AND STOPS			PIPE SIZES			MOUNTING	REMARKS
							MANUFACT. MODEL NO.	SPOUT	HANDLES	CENTERS	TYPE	SIZE	WASTE	VENT	CH	HW	WASTE	VENT		
P-1	WATER CLOSET	FLUSH VALVE	AMERICAN STANDARD	2234.015	VITREOUS CHINA	STANDARD ELONGATED	SLOAN ROYAL III	-	-	-	-	-	-	3"	2"	1 1/4"	-	FLOOR	PROVIDE WITH OPEN FRONT SEAT WITH NO LID	
P-1A	WATER CLOSET	FLUSH VALVE	AMERICAN STANDARD	2305.100	VITREOUS CHINA	ADA ELONGATED	SLOAN ROYAL III	-	-	-	-	-	-	3"	2"	1 1/4"	-	FLOOR	PROVIDE WITH OPEN FRONT SEAT WITH NO LID	
P-2	URINAL	FLUSH VALVE	AMERICAN STANDARD	6501.010	VITREOUS CHINA	ADA ELONGATED	SLOAN ROYAL 186-1-ADA	-	-	-	-	-	-	3"	1 1/2"	3/4"	-	WALL	MOUNT AT REQUIRED ADA HEIGHT	
P-3	LAVATORY	WALL HUNG	AMERICAN STANDARD	0356.421	VITREOUS CHINA	ADA COMPLIANT	DELTA 877-III METERED	CENTERSET	SINGLE LEVER	-	GRID	1 1/2"	McGUIRE FK2125	2"	1 1/2"	1/2"	1/2"	WALL HUNG	MOUNT AT ADA HEIGHT	
P-4	SERVICE SINK	CAN WASH	BUILT-IN BASIN BY GC	-	-	CUSTOM	CHICAGO 847-CP	WITH PAIL HOOK	LEVER HANDLES	8"	STRAINER	3"	-	3"	2"	1/2"	1/2"	WALL	PROVIDE CAST IRON P-TRAP WITH CLEANOUT & STRAINER.	
FD	FLOOR DRAIN	ROUND TOP	PLASTIC ODDITIES	PAB722R # PGAT22R W/ STRAINER	PVC	NICKEL TOP	-	-	-	-	-	-	-	-	-	-	-	FLOOR	STRAINER: SP-4 PROVIDE TRAP PRIMER PFP P-1 AND 1/2" COPPER SUPPLY TO TRAP	
FS	FLOOR SINK	ROUND TOP	PLASTIC ODDITIES	PFS400H	PVC	PVC	-	-	-	-	PVC	-	-	-	-	-	-	FLOOR	1/2" GRATE W/ SECONDARY STRAINER	
RD	ROOF DRAIN	LARGE SUMP	JOSAM	21500-AE	POLYPR. DOME	-	-	-	-	-	-	-	-	-	-	-	-	ROOF	G.C. TO INSTALL PC TO PROVIDE AND MAKE FINAL CONNECTION. INSULATE PER CODE.	
HB	HOSE BIBB	STANDARD	WOODFORD	24P	CAST BRASS	WALL FAUCET	-	-	-	-	-	-	-	-	-	-	1/2"	WALL	LOOSE KEY	
FP1B	HOSE BIBB	FREEZE PROOF	WOODFORD	B65	CAST BRASS	YARD	-	-	-	-	-	-	-	-	-	-	1/2"	WALL	GRADE	
FP1B2	HOSE BIBB	FREEZE PROOF	WOODFORD	S3	CAST BRASS	YARD	-	-	-	-	-	-	-	-	-	-	1/2"	WALL	GRADE	
WCO	WALL CLEAN-OUT	ROUND COVER	J.R. SMITH	4472	CAST IRON	S.S. COVER	-	-	-	-	-	-	-	-	-	-	-	WALL	GAS/WATER TIGHT ABS PLUG	
FCO	FLOOR CLEAN-OUT	SQUARE TOP	J.R. SMITH	4040	CAST IRON	NICKEL BRONZE TOP	-	-	-	-	-	-	-	-	-	-	-	FLOOR	PROVIDE WITH 10"x10"x1/4" THK CONCRETE PAD AT GRADE. NO HUB, GAS/WATER TIGHT ABS PLUG	
GCO	GRADE CLEAN-OUT	ROUND TOP	J.R. SMITH	4240	CAST IRON	CAST IRON TOP	-	-	-	-	-	-	-	-	-	-	-	GRADE	PROVIDE WITH 10"x10"x1/4" THK CONCRETE PAD AT GRADE. NO HUB, GAS/WATER TIGHT ABS PLUG	
WH-1	WATER HEATER	NATURAL GAS	RINNAI	RU881	-	DIRECT VENT	-	-	-	-	-	-	-	SEE PLAN	SEE PLAN	SEE DETAIL	-	-	TANKLESS, 199"MBH, 4 GPM REC @ 100°F RISE EACH	

NOTES:  
 1. CATALOG NUMBERS AND MANUFACTURERS ARE TO INDICATE TYPE AND QUALITY OF FIXTURE DESIRED. SUBMIT CUTSHEETS OF THESE AND ALTERNATE MANUFACTURERS FOR ARCHITECT AND OWNER APPROVAL PRIOR TO PURCHASE OF ANY FIXTURES. INFORMATION ON ALTERNATE FIXTURES PROPOSED BY THE CONTRACTOR SHALL INCLUDE THE ADD/DEDUCT ASSOCIATED WITH ACCEPTANCE OF THAT FIXTURE (OR THE ALTERNATE PACKAGE AS A WHOLE).

### PLUMBING GENERAL NOTES

- FURNISH ALL LABOR, MATERIAL, AND EQUIPMENT REQUIRED FOR THE COMPLETION AND OPERATION OF ALL SYSTEMS IN THIS SECTION OF WORK IN ACCORDANCE WITH ALL APPLICABLE CODES.
- ALL PLUMBING FIXTURES AND PLUMBING SYSTEM EQUIPMENT SHALL BE PROVIDED COMPLETE WITH ALL ACCESSORIES, HANGERS, VALVES, STOPS, TAILPIECES, TRAPS, FAUCETS, STRAINERS, ETC. SEE FIXTURE SCHEDULE.
- FURNISH AND INSTALL COMPLETE SYSTEMS OF SOIL, WASTE, VENT, HOT AND COLD WATER PIPING FROM ALL PLUMBING FIXTURES, AND/OR OTHER EQUIPMENT.
- CLEANOUT PLUGS SHALL BE INSTALLED IN ACCORDANCE WITH PLUMBING CODE REQUIREMENTS. PROVIDE CLEANOUTS AT THE BASE OF ALL WASTE STACKS, AT EVERY FOUR (4) DEGREE TURNS, AND AT EVERY 100 FEET. CLEANOUTS SHALL BE PLACED IN READILY ACCESSIBLE LOCATIONS.
- ALL SOIL, WASTE, AND VENT LINES SHALL BE CONCEALED IN THE BUILDING CONSTRUCTION.
- COPPER PIPING SHALL BE PROTECTED AGAINST CONTACT WITH MASONRY OR DISSIMILAR METALS. ALL HANGERS, SUPPORTS, ANCHORS, AND CLIPS SHALL BE COPPER OR COPPER PLATED. WHERE COPPER PIPING IS CARRIED ON IRON TRAPEZE HANGERS WITH OTHER PIPING, SATISFACTORY AND PERMANENT ELECTROLYTIC ISOLATION MATERIAL SHALL PROTECT THE COPPER AGAINST CONTACT WITH OTHER METALS.
- WHERE COPPER PIPING IS SLEEVED THROUGH MASONRY, SLEEVES SHALL BE COPPER OR RED BRASS. WHERE COPPER MUST BE CONCEALED IN A MASONRY PARTITION OR AGAINST MASONRY, CONTACT SHALL BE PREVENTED BY COATING THE COPPER HEAVILY WITH ASPHALTIC ENAMEL AND PROVIDING 1/8" ASPHALT SATURATED FELT BETWEEN THE PIPE AND MASONRY.
- THE PLUMBING CONTRACTOR SHALL COORDINATE CLOSELY WITH THE MECHANICAL AND THE ELECTRICAL CONTRACTORS TO AVOID CONFLICT WITH OTHER TRADES.
- CEILING AREA HAS LIMITED SPACE. CONTRACTOR MUST COORDINATE WITH OTHER TRADES FOR ALL STRUCTURES, PIPING, CONDUIT, DUCTWORK, LIGHTING, ETC. TO PROPERLY BE INSTALLED.
- ALL PIPE INSULATION SHALL RUN CONTINUOUSLY THROUGH FLOORS, WALLS, AND PARTITIONS.
- PROVIDE DRAIN VALVES IN THE HOT AND COLD WATER SYSTEM AT ALL LOW POINTS TO ALLOW FOR COMPLETE DRAINAGE.
- VACUUM BREAKERS SHALL BE PROVIDED FOR ALL FIXTURES TO WHICH HOSES MAY BE ATTACHED. VACUUM BREAKERS SHALL BE PERMANENTLY ATTACHED.
- STORM, WASTE AND VENT PIPING SHALL BE AS FOLLOWS UNLESS OTHERWISE NOTED:  
 BELOW SLAB: PVC PIPE, PVC SOCKET FITTINGS, AND SOLVENT CEMENTED FITTINGS.  
 ABOVE SLAB: PVC PIPE, PVC SOCKET FITTINGS, AND SOLVENT CEMENTED FITTINGS.  
 AREAS WHERE NON-COMBUSTIBLE PIPING IS REQUIRED:  
 BELOW SLAB: SERVICE WEIGHT HUB AND SPOUT CAST IRON PIPING WITH GASKETS  
 ABOVE SLAB: SERVICE WEIGHT HUB AND SPOUT CAST IRON PIPING WITH CAST IRON FITTINGS AND HEAVY DUTY GASKETS
- DOMESTIC HOT WATER PIPING ABOVE SLAB SHALL BE TYPE 'L' COPPER. ELECTRIC MOP PIPING ABOVE SLAB SHALL BE TYPE 'K' COPPER. INSULATION IS REQUIRED ON ALL HOT WATER SUPPLY PIPING ABOVE FINISHED FLOOR. PROVIDE INSULATION IN ACCORDANCE WITH THE STATE PLUMBING CODE OR PER LOCAL JURISDICTION.
- INVERT ELEVATIONS SHALL BE ESTABLISHED AND VERIFIED BEFORE WASTE PIPING IS INSTALLED SO THAT PROPER SLOPES WILL BE MAINTAINED.
- THE PLUMBING CONTRACTOR SHALL PROVIDE WATER HAMMER PROTECTION ON ALL WATER DISTRIBUTION PIPING. INSTALLATION OF AIR CHAMBERS OR SHOCK ARRESTORS SHALL BE IN ACCORDANCE WITH PDI-M201. SEE SHOCK ARRESTOR SCHEDULE (IF PROVIDED).
- PROVIDE FULL PORT VALVES IN ALL BRANCH LINES OF THE HOT AND COLD WATER DISTRIBUTION SYSTEM ON 3/4" AND LARGER CH & HW AND AS SHOWN ON PLANS, RISERS, AND SCHEMATIC DETAILS.
- REFER TO ARCHITECTURAL DRAWINGS FOR MOUNTING HEIGHTS OF PLUMBING FIXTURES.
- PROVIDE ACCESS DOORS FOR ALL VALVES AND DEVICES REQUIRING ACCESS WHEN LOCATED IN WALLS OR ABOVE INACCESSIBLE CEILING CONSTRUCTION.
- PROVIDE DEEP SEAL TRAPS FOR ALL FLOOR DRAINS.
- WHERE EARTHQUAKE LOADS ARE APPLICABLE IN ACCORDANCE WITH THE INTERNATIONAL PLUMBING CODE, PIPING AND EQUIPMENT SUPPORTS SHALL BE DESIGNED AND INSTALLED FOR THE SEISMIC FORCES IN ACCORDANCE WITH THE STATE BUILDING CODE.
- PROVIDE A U.L. LISTED ASSEMBLY FOR ALL PENETRATIONS THRU FIRE RATED WALLS AND FLOORS.
- PROVIDE PRESSURE REDUCING VALVE IF PRESSURE EXCEEDS 80 PSI.

### PLUMBING LEGEND



### SHOCK ARRESTOR SCHEDULE

P.D.I. SIZE	FIXTURE UNITS	MANUFACTURER OR EQUAL
SA/A'	1 - 11	ZURN, SMITH, PPI, SLOAN
SA/B'	12 - 32	"
SA/C'	33 - 60	"
SA/D'	61 - 113	"

LOCATE SHOCK ARRESTORS IN AN ACCESSIBLE LOCATION. PROVIDE SOUL-DRIFT SHOCK ARRESTORS ON ALL WASTE STACKS. PROVIDE SHOCK ARRESTORS AS INDICATED IN SCHEDULE. SHOCK ARRESTORS SHALL BE SAME SIZE AS PIPE INSTALLED ON THEM.

### GREASE SEPARATOR FLOW CALCULATION

(1) 3" COP. SINK (2" x 24" x 14") (24x24x14) = 7.5 GPM (CUBIC INCHES/2.31) = 105 GPM  
 (2) 2" COP. SINK (2" x 24" x 14") (24x24x14) = 18.44 GPM (CUBIC INCHES/2.31) = 70 GPM  
 (3) HAND SINK, 2 GPM EACH = 4 GPM  
 (1) 1/2" P. SINK FAUCET RESTRICTED TO 3 GPM  
 TOTAL = 184 GPM  
 184 GPM x 0.66 (LOADING FACTOR) = 138 GPM  
 138 GPM / 6 (# OF FIXTURES) = 23 GPM  
 23 GPM x 60 (MINUTE RETENTION TIME) = 1380

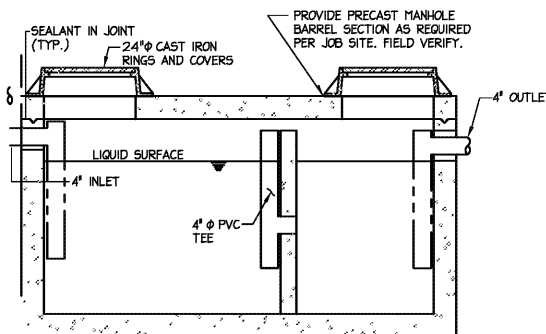
### SELECTED GREASE SEPARATOR:

1,500 GALLON PRE-CAST

### APPROVED MANUFACTURER'S LISTING

SPECIFIED PRODUCT:	ACCEPTED EQUAL:
AMERICAN STANDARD (A.S.)	KOHLER, ELIER, ZURN
CHICAGO (FAUCETS)	TIS BRASS, SPEAKMAN
MCUIRE (SUPPLY STOPS)	SANITARY DASK, E.B.C.
SLOAN (FLUSH VALVES)	AQUAFUSH (ZURN) DELANY
SMITH (DRAINS)	ZURN, JOSAM, WADE
FLORESTONE (UTILITY SINKS, MOP SINKS)	FIAT, STERN WILLIAMS
VOYAGER (WATER HEATERS)	STATE, LOGGINVAR, RHEEM
AMITROL (EXPANSION TANKS)	A.O. SMITH, WATTS, WESSELS
WOODFORD (HYDRANTS, HOSE BIBBS)	SMITH, MIFAB, ZURN

NOTES:  
 1. THE CONTRACTOR IS RESPONSIBLE FOR PROVIDING THE MODEL WHICH MOST CLOSELY MATCHES THE SPECIFIED PRODUCT. PROVIDE PRODUCTS MADE BY THE MANUFACTURER'S LISTED.

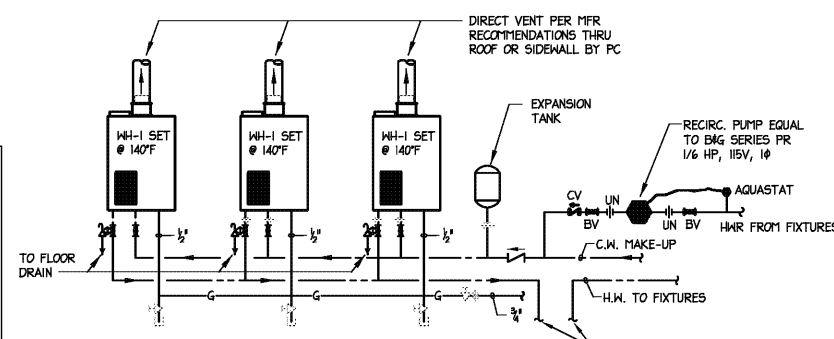


1500 GALLON GREASE SEPARATOR (STAY-RIGHT) PROCEPTOR SHALL BE CONSIDERED AN EQUAL.

8 GREASE SEPARATOR DETAIL  
NO SCALE

### GREASE TRAP NOTES:

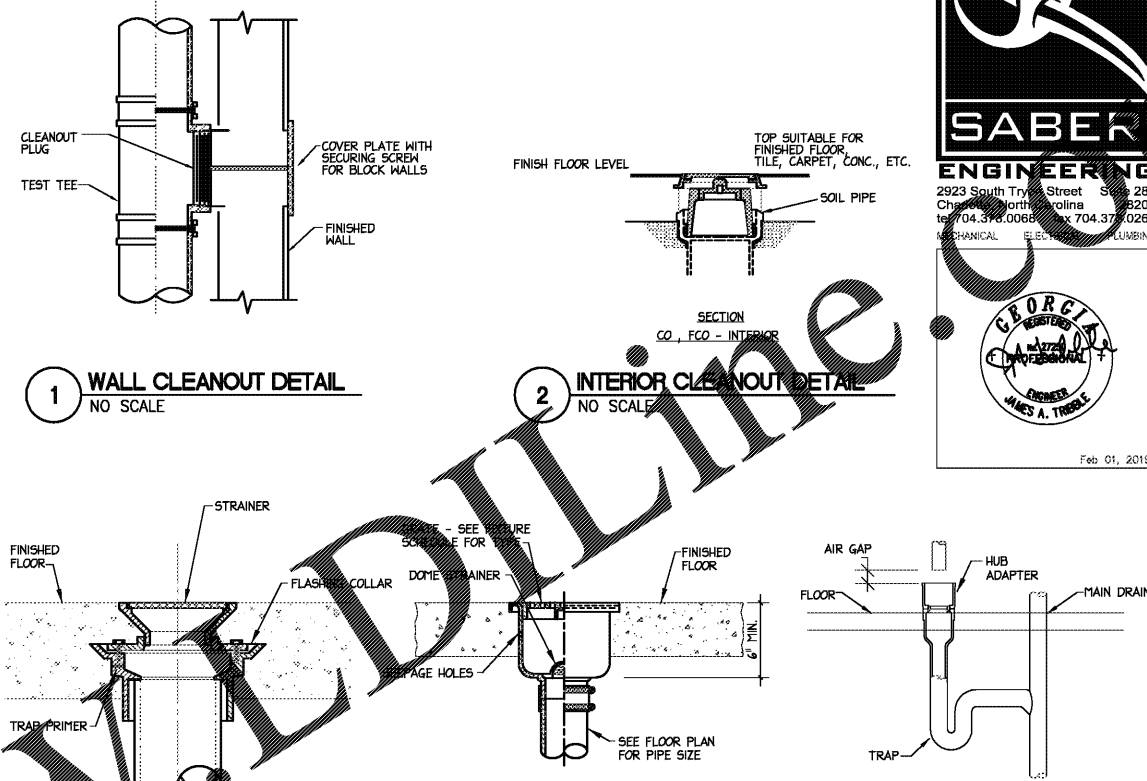
- PROVIDE ONE (1) 1500 GALLON (MIN.) PRECAST GREASE TRAP WITH HEAVY DUTY CAST MANHOLE COVERS AND FRAME. TRAP SHALL BE CONSTRUCTED AND VENTED IN ACCORDANCE WITH ALL APPLICABLE CODES.
- PROVIDE TWO WAY CLEANOUTS BEFORE AND AFTER GREASE TRAP.
- FIELD VERIFY LOCATION OF GREASE TRAP AND COORDINATE WITH OTHER TRADES IN AREA OF TRAP.
- GREASE TRAP SHALL BE FACTORY BUILT OR OFF-SITE BUILT, NO CONSTRUCTION ALLOWED ON SITE.
- GREASE TRAP SHALL BE CONSTRUCTED PER "HIGHWAY H-20 LOADING" DESIGN REQUIREMENTS. ASSUME SOIL BEARING CAPACITY AT 2000 PSF MAXIMUM.
- MANHOLE COVERS SHALL HAVE THE WORDS "GREASE TRAP" CAST ON EXTERIOR OF THE COVERS.
- PROCEPTOR SHALL BE USED AS EQUAL. ALTERNATE. CONSULT LOCAL REPRESENTATIVE FOR SIZE.



NOTE:  
 1. INSTALL WATER HEATER PER MANUFACTURER REQUIREMENTS.  
 2. PROVIDE HEAT TRAP ON CW AND HW LINES PER ENERGY CODE.  
 3. MANUFACTURER RECOMMENDS ISOLATION KIT WITH INSTALLATION.

9 INSTANTANEOUS WATER HEATER DETAIL  
NO SCALE

THE ARCHITECT/ENGINEER DOES NOT DEFINE THE SCOPE OF INDIVIDUAL TRADES, SUBCONTRACTORS, MATERIAL SUPPLIERS, OR VENDORS. ANY SHEET NUMBERING SYSTEM USED WHICH IDENTIFIES DISCIPLINES IS SOLELY TO SEPARATE ARCHITECT'S AND ENGINEER'S SCOPE. IT DOES NOT DEFINE A SUBCONTRACTOR'S SCOPE OF WORK. ANY DISCREPANCIES BETWEEN DRAWINGS, SPECIFICATIONS, CODES OR CONSTRUCTION SEQUENCING SHALL BE BROUGHT TO THE ATTENTION OF THE ARCHITECT PRIOR TO PROCEEDING. NO CONSIDERATION WILL BE GIVEN TO REQUESTS FOR CHANGE ORDERS FOR FAILURE TO OBTAIN AND REVIEW THE COMPLETE SET OF CONSTRUCTION DOCUMENTS, OR FOR FAILURE TO SEEK INTERPRETATION FROM ARCHITECT FOR DISCREPANCIES.



1 WALL CLEANOUT DETAIL  
NO SCALE

2 INTERIOR CLEANOUT DETAIL  
NO SCALE

3 FLOOR DRAIN DETAIL  
NO SCALE

4 FLOOR SINK DETAIL  
NO SCALE

5 HUB DRAIN DETAIL  
NO SCALE

6 MOP SINK DETAIL  
NO SCALE

7 EXTERIOR CLEANOUT DETAIL  
NO SCALE

**SABER ENGINEERING**  
 2923 South Tryon Street, Suite 280  
 Charlotte, North Carolina 28203  
 Tel: 704.374.0068 Fax: 704.374.0260  
 MECHANICAL ELECTRICAL PLUMBING  
 GEORGIA REGISTERED PROFESSIONAL ENGINEER  
 MILES A. TROSBEL  
 Feb 01, 2019

architecture - interior design  
 421 Penman Street, Suite 200, Charlotte, NC 28203  
 Email: esc@esdarch.com • Phone: 704-373-1900

NOT FOR CONSTRUCTION PRELIM-BUDGET

BOJANGLES' 14 RESTAURANT  
 HUDSON BRIDGE ROAD  
 AT WILLIS DRIVE  
 STOCKBRIDGE, GEORGIA

NOT FOR CONSTRUCTION PRELIM-BUDGET

ISSUE DATE: 02-08-2019  
 REVISION 1: ---  
 REVISION 2: ---  
 REVISION 3: ---  
 REVISION 4: ---  
 PROJECT #: 18-164-000  
 CONTENT: PLUMBING SCHEDULE, NOTES AND DETAILS  
 PROJECT ENGINEER: SABER  
 DRAWN BY: SABER  
 CADD FILE NAME: ESD-1901-14-P01.dwg  
 THIS DRAWING AND THE DESIGN SHOWN ARE THE PROPERTY OF BOJANGLES RESTAURANTS, INC. THE REPRODUCTION, OR USE OF THIS DRAWING WITHOUT THEIR WRITTEN CONSENT IS PROHIBITED. ANY INFRINGEMENT IS SUBJECT TO LEGAL ACTION.  
 Sheet P-1