

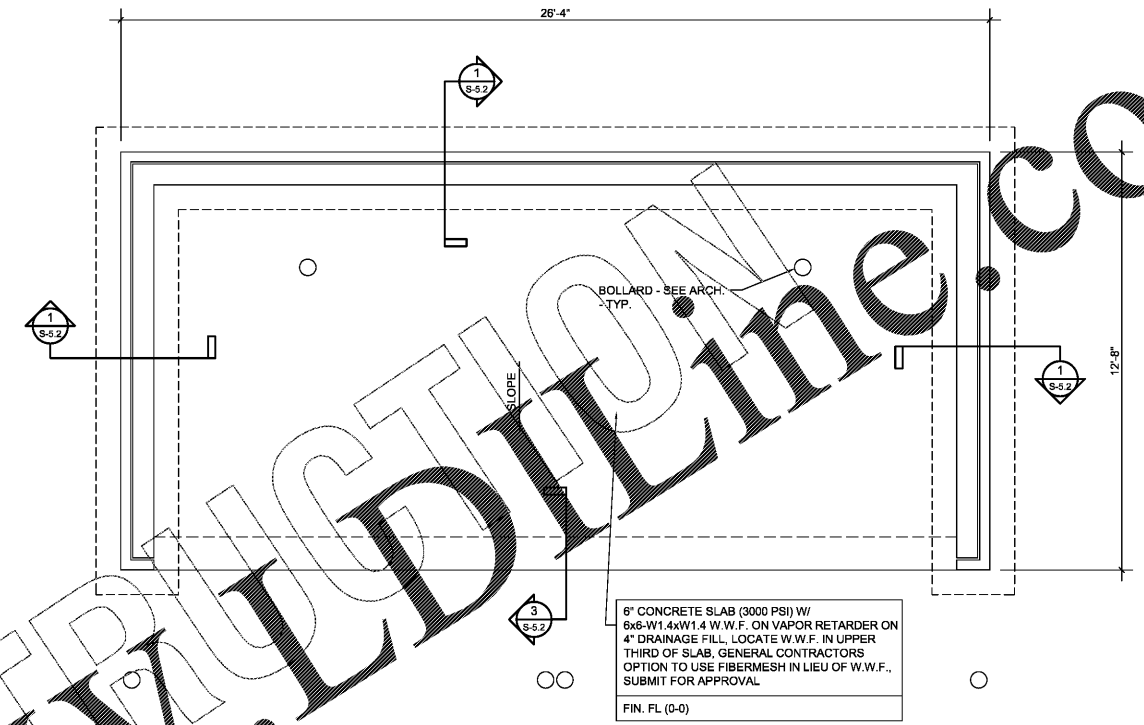
4" CONCRETE SLAB (3000 PSI) W/ 6x6-W1.4xW1.4 W.W.F. ON VAPOR RETARDER ON 4" DRAINAGE FILL. LOCATE W.W.F. IN UPPER THIRD OF SLAB. GENERAL CONTRACTORS OPTION TO USE FIBERMESH IN LIEU OF W.W.F.. SUBMIT FOR APPROVAL.  
FIN. FL. (0-0)

6" CONCRETE SLAB (3000 PSI) W/ 6x6-W1.4xW1.4 W.W.F. ON VAPOR RETARDER ON 4" DRAINAGE FILL. LOCATE W.W.F. IN UPPER THIRD OF SLAB. GENERAL CONTRACTORS OPTION TO USE FIBERMESH IN LIEU OF W.W.F.. SUBMIT FOR APPROVAL.  
FIN. FL. (0-0)

**1** FOUNDATION PLAN  
S-5.1 SCALE: 3/8"=1'-0"

- NOTES:
1. ALL ELEVATIONS REFERENCED FROM FIN. FL. (0-0).
  2. CONTRACT DRAWINGS SHALL NOT BE USED FOR SHOP DRAWINGS.
  3. SEE SHEET S-0.1 FOR GENERAL NOTES.

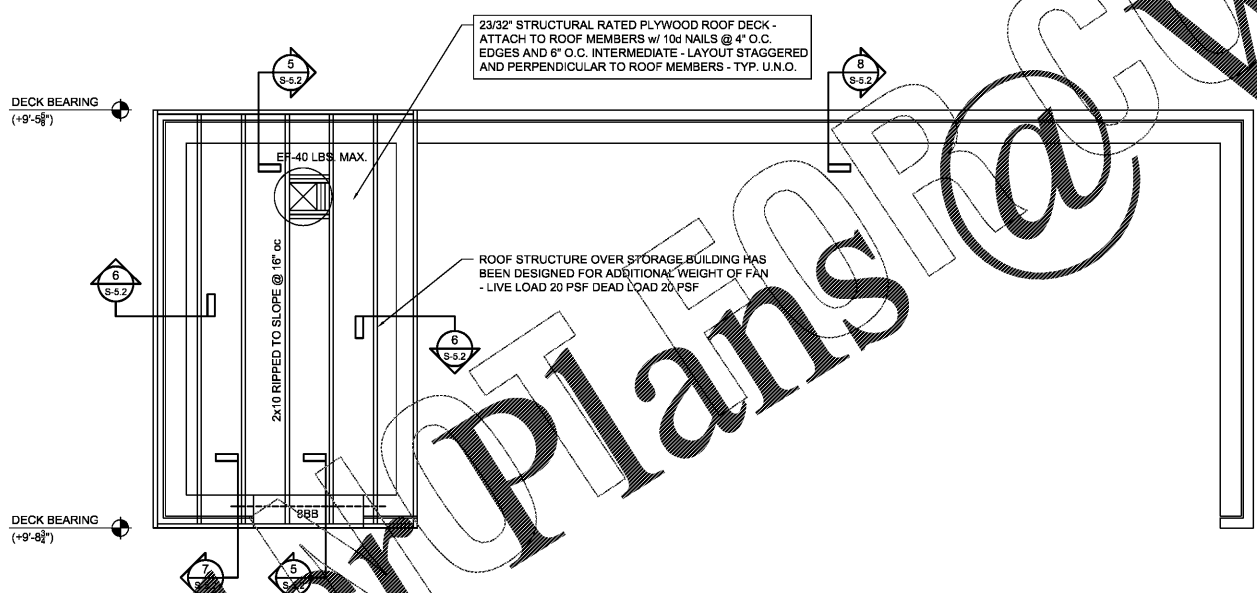
BLOCKING ALONG THE PERIMETER EDGE OF ROOF SHEATHING WITH LUMBER SHALL BE AT LEAST TWO (2) INCHES IN NOMINAL WIDTH TO ACCOMMODATE THE REQUIRED DIAPHRAGM BOUNDARY FASTENING



6" CONCRETE SLAB (3000 PSI) W/ 6x6-W1.4xW1.4 W.W.F. ON VAPOR RETARDER ON 4" DRAINAGE FILL. LOCATE W.W.F. IN UPPER THIRD OF SLAB. GENERAL CONTRACTORS OPTION TO USE FIBERMESH IN LIEU OF W.W.F.. SUBMIT FOR APPROVAL.  
FIN. FL. (0-0)

**3** ALTERNATE FOUNDATION PLAN  
S-5.1 SCALE: 3/8"=1'-0"

- NOTES:
1. ALL ELEVATIONS REFERENCED FROM FIN. FL. (0-0).
  2. CONTRACT DRAWINGS SHALL NOT BE USED FOR SHOP DRAWINGS.
  3. SEE SHEET S-0.1 FOR GENERAL NOTES.



23/32" STRUCTURAL RATED PLYWOOD ROOF DECK - ATTACH TO ROOF MEMBERS w/ 10d NAILS @ 4" O.C. EDGES AND 6" O.C. INTERMEDIATE - LAYOUT STAGGERED AND PERPENDICULAR TO ROOF MEMBERS - TYP. U.N.O.

ROOF STRUCTURE OVER STORAGE BUILDING HAS BEEN DESIGNED FOR ADDITIONAL WEIGHT OF FAN - LIVE LOAD 20 PSF DEAD LOAD 20 PSF

**2** ROOF FRAMING PLAN  
S-5.1 SCALE: 3/8"=1'-0"

- NOTES:
1. ALL ELEVATIONS REFERENCED FROM FIN. FL. (0-0).
  2. CONTRACT DRAWINGS SHALL NOT BE USED FOR SHOP DRAWINGS.
  3. SEE SHEET S-0.1 FOR GENERAL NOTES.

**ARP ENGINEERING**  
CONSULTING ENGINEERS

202 EAST FRANKLIN STREET, SUITE A  
PO BOX 587 - MONROE - NC 28111  
(704) 225-0079  
GA COA PEF004471

THE ARCHITECT/ENGINEER DOES NOT DEFINE THE SCOPE OF INDIVIDUAL TRADES, SUBCONTRACTORS, MATERIAL SUPPLIERS, OR VENDORS. ANY SHEET NUMBERING SYSTEM USED WHICH IDENTIFIES DISCIPLINES IS SOLELY TO SEPARATE ARCHITECT'S AND ENGINEER'S SCOPE; IT DOES NOT DEFINE A SUBCONTRACTOR'S SCOPE OF WORK. ANY DISCREPANCIES BETWEEN DRAWINGS, SPECIFICATIONS, CODES OR CONSTRUCTION SEQUENCING SHALL BE BROUGHT TO THE ATTENTION OF THE ARCHITECT PRIOR TO PROCEEDING. NO CONSIDERATION WILL BE GIVEN TO REQUESTS FOR CHANGE ORDERS FOR FAILURE TO OBTAIN AND REVIEW THE COMPLETE SET OF CONSTRUCTION DOCUMENTS, OR FOR FAILURE TO SEEK INTERPRETATION FROM ARCHITECT FOR DISCREPANCIES.

PRELIMINARY  
NOT FOR CONSTRUCTION

**BOJANGLES' 14 RESTAURANT**  
HUDSON BRIDGE ROAD  
AT WILLIS DRIVE  
STOCKBRIDGE, GEORGIA

ISSUE DATE: 1-9-2019  
REVISION 1: \_\_\_\_\_  
REVISION 2: \_\_\_\_\_  
REVISION 3: \_\_\_\_\_  
REVISION 4: \_\_\_\_\_  
PROJECT #: 18-164-000  
CONTENT: \_\_\_\_\_

PROJECT ARCHITECT: ECE  
DRAWN BY: LDA/DAP

CADD FILE NAME: 18-164-000 Bojangles

THIS DRAWING AND THE DESIGN SHOWN ARE THE PROPERTY OF BOJANGLES RESTAURANTS INC. THE REPRODUCTION, OR USE OF THIS DRAWING WITHOUT THEIR WRITTEN CONSENT IS PROHIBITED. ANY INFRINGEMENT IS SUBJECT TO LEGAL ACTION.

Sheet

**S-5.1**

421 Penman Street, Suite 200, Charlotte, NC 28203  
Email: esd@esdarch.com • Phone: 704-373-1900

Order Plans @ www.LDLine.com