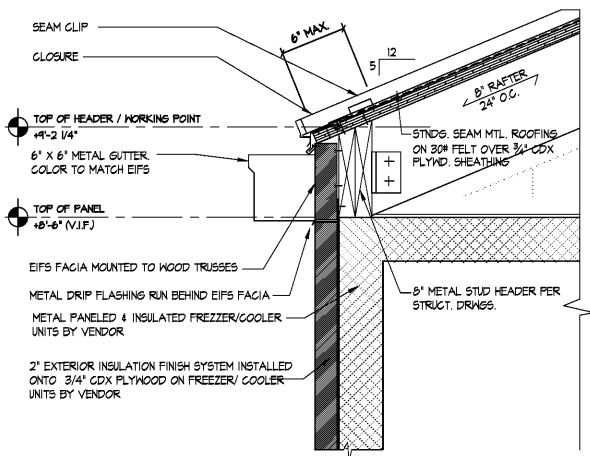
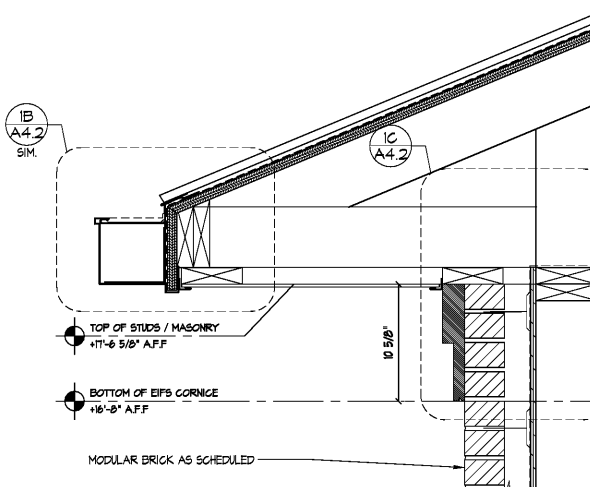


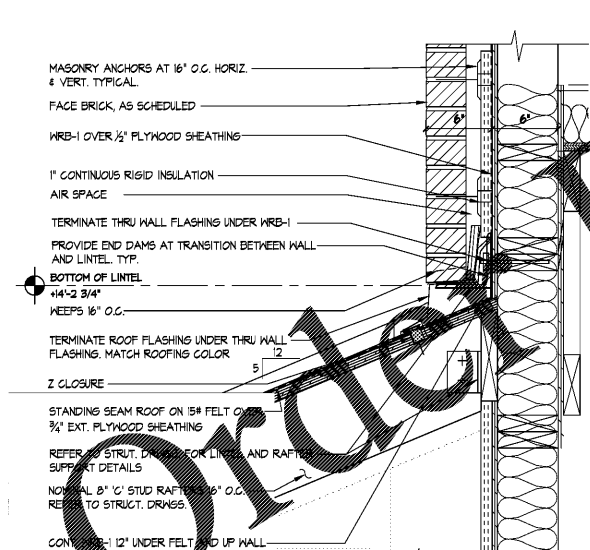
P:\CLIENT FILES\Bojangles\18-164-000 Bojangles (F) Stockbridge GA\06-CD's-NEW Pitch Roof\A04-2 WALL SECTIONS.dwg, Plotted By: rsevers, Plotted: Feb 04, 2019 - 3:56pm



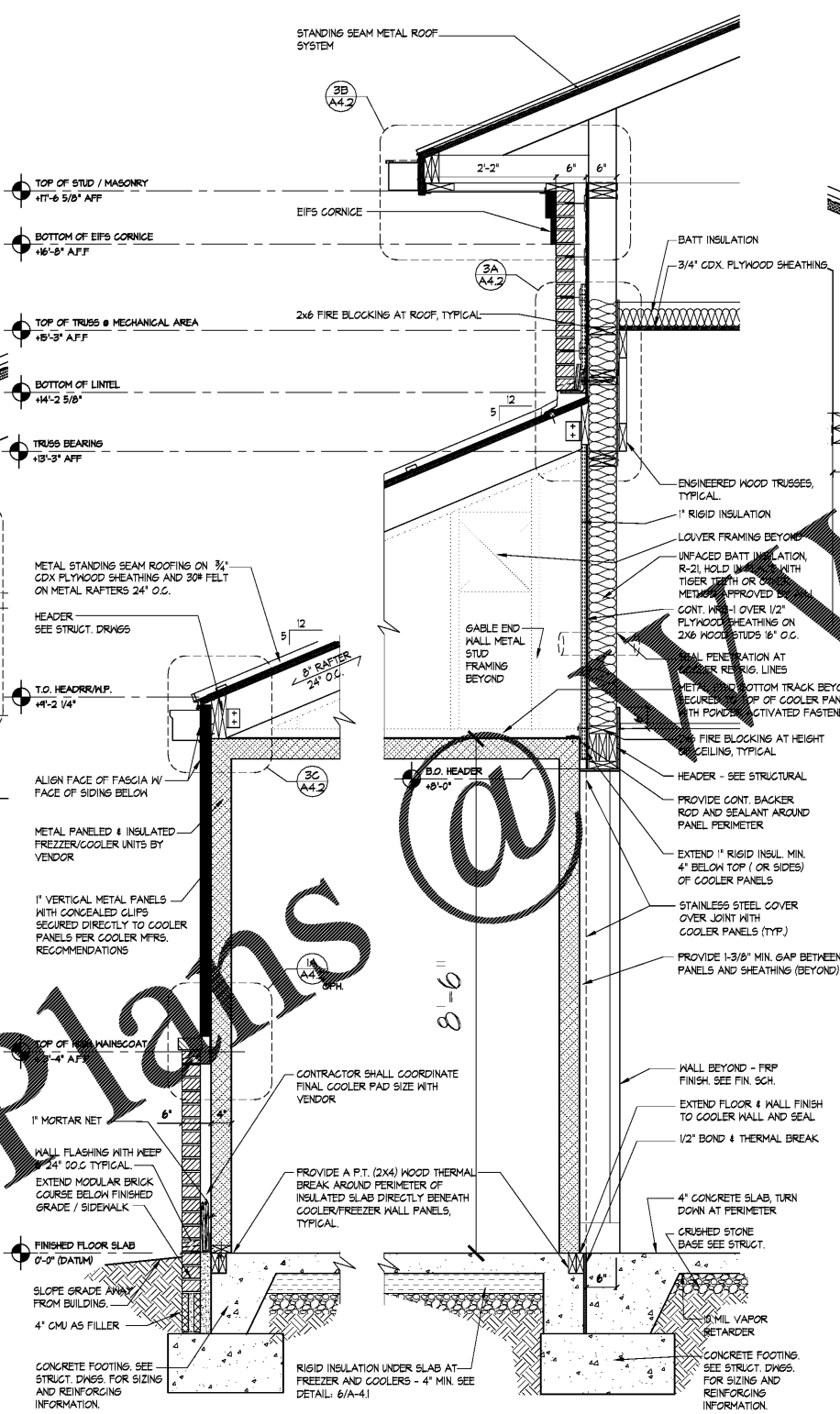
**3C FASCIA /GUTTER DETAIL @ FREEZER/ COOLER WALL**  
SCALE: 1 1/2"=1'-0"



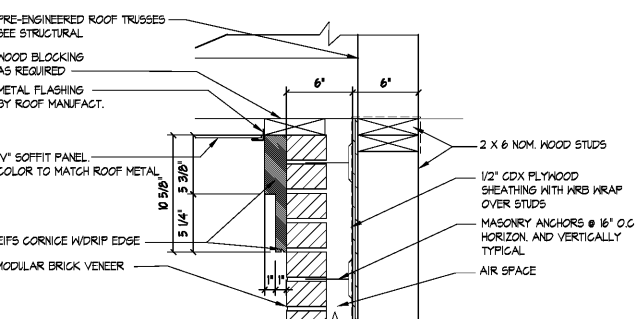
**3B EAVES DETAIL**  
SCALE: 1 1/2"=1'-0"



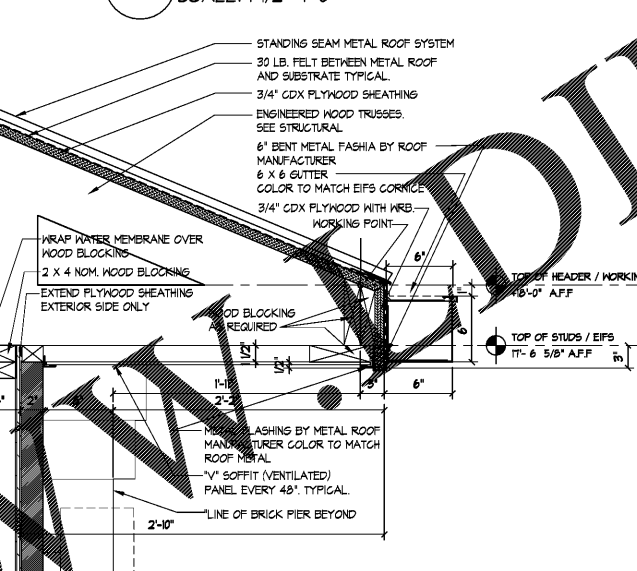
**3A DETAIL @ WALL CONNECTION**  
SCALE: 1 1/2"=1'-0"



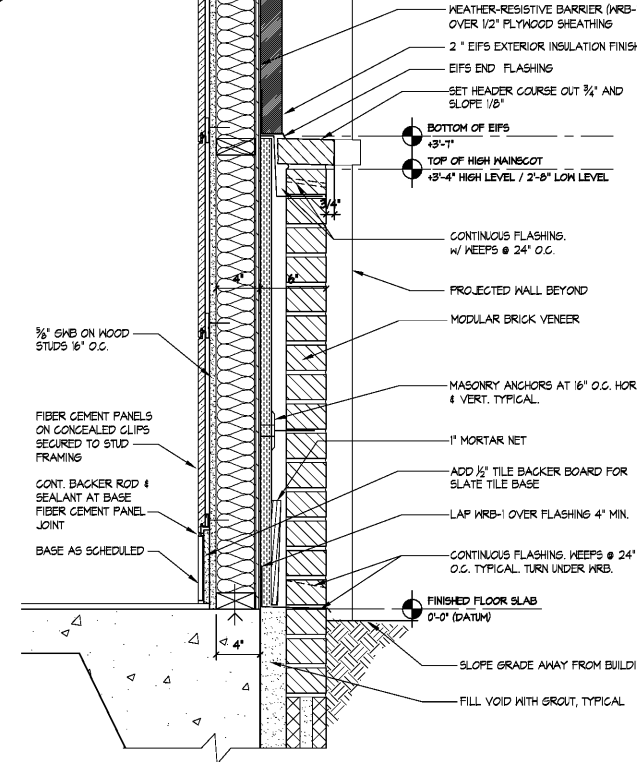
**3 WALL SECTION @ FREEZER / COOLER AREA**  
SCALE: 3/4"=1'-0"



**1C EAVES CORNICE DETAIL AT BRICK VENEER**  
SCALE: 1 1/2"=1'-0"

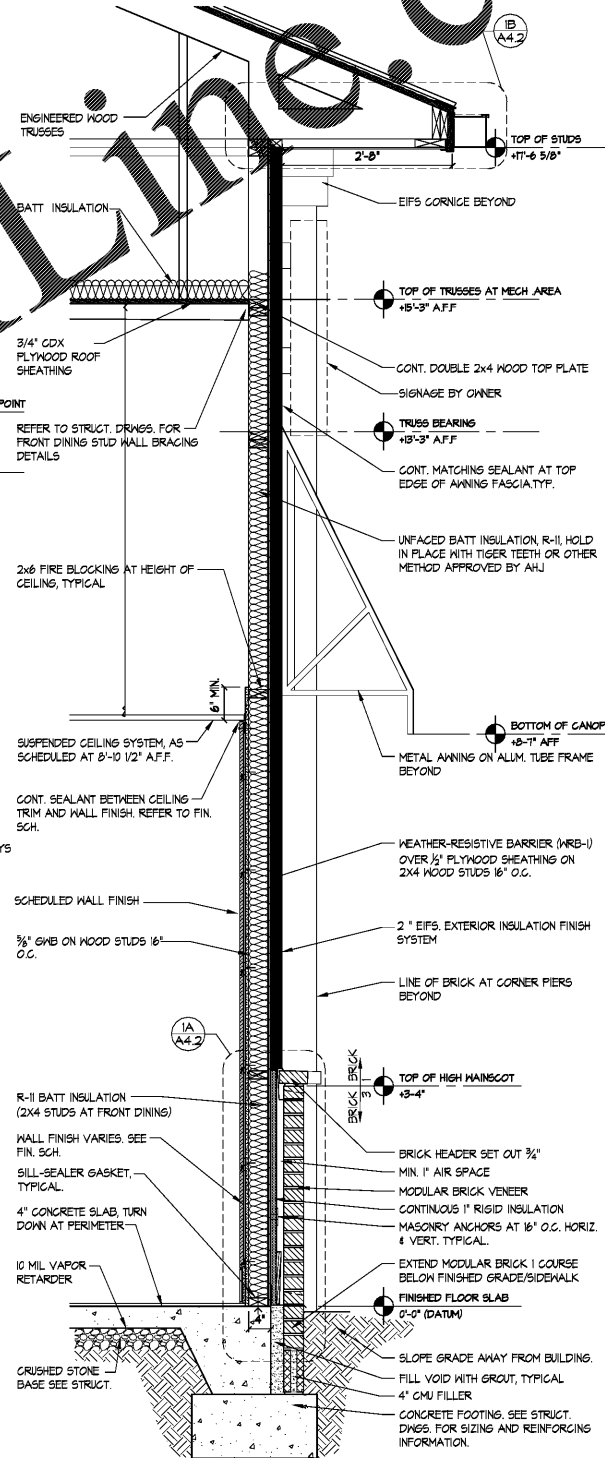


**1B EAVES DETAIL**  
SCALE: 1 1/2"=1'-0"



**1A DETAIL @ WAINSCOT WALL**  
SCALE: 1 1/2"=1'-0"

**GENERAL NOTES:**  
 NOTE 1: ALL MASONRY KEEPS ARE TO HAVE A SPACER WHICH ALLOWS MOISTURE TO PASS THROUGH, BUT NOT ALLOW INSECTS INTO THE WALL. USE CELL-VENT DIDDY BY DUR-O-WALL. COLOR IS TO MATCH MORTAR.  
 NOTE 2: REFER TO ELEVATION FINISH SCHEDULE ON SHEET A-3.2 FOR EXTERIOR FINISHES.  
 NOTE 3: FOR AIR & WATER RESISTIVE BARRIER (WRB) INSTALLATION SHALL BE IN STRICT ACCORDANCE WITH MFR'S INSTRUCTIONS. WRB SHALL BE CONTINUOUS AT ENTIRE EXTERIOR OF BUILDING. WRB SHALL BE SHINGLED TO SHED WATER & ALL LAPS TAPED. RETURN WRB AT JAMES OF ALL OPENINGS. ANY AND ALL PENETRATIONS SHALL BE PATCHED & SEALED. WATER AND AIR TIGHT WITH MATERIALS APPROVED BY WRAP MFR.  
 WRB-1 PROVIDE 1 LAYER OF DUPONT TYVEK COMMERCIAL WRAP OR ARCHITECT'S APPROVED SUBSTITUTION APPLIED CONTINUOUSLY TO ALL SHEATHING SURFACES THROUGHOUT THE BUILDING.  
 WRB-2 PROVIDE EXT. PAINT-3, SHERWIN WILLIAMS CONLEX XL HIGH BUILD ELASTOMER COATING TYP. 4" BELOW GRADE (TYP.)  
 NOTE 4: SEE STRUCTURAL DRAWINGS FOR STUD SIZES & SPACING



**1 WALL SECTION**  
SCALE: 3/4"=1'-0"

THE ARCHITECT/ENGINEER DOES NOT DEFINE THE SCOPE OF INDIVIDUAL TRADES, SUBCONTRACTORS, MATERIAL SUPPLIERS, OR VENDORS. ANY SHEET NUMBERING SYSTEM USED WHICH IDENTIFIES DISCIPLINES IS SOLELY TO SEPARATE ARCHITECTS AND ENGINEER'S SCOPE. IT DOES NOT DEFINE A SUBCONTRACTOR'S SCOPE OF WORK. ANY DISCREPANCIES BETWEEN DRAWINGS, SPECIFICATIONS, CODES OR CONSTRUCTION SEQUENCING SHALL BE BROUGHT TO THE ATTENTION OF THE ARCHITECT PRIOR TO PROCEEDING. NO CONSIDERATION WILL BE GIVEN TO REQUESTS FOR CHANGE ORDERS FOR FAILURE TO OBTAIN AND REVIEW THE COMPLETE SET OF CONSTRUCTION DOCUMENTS, OR FOR FAILURE TO SEEK INTERPRETATION FROM ARCHITECT FOR DISCREPANCIES.

**BOJANGLES' 14 RESTAURANT**  
**HUDSON BRIDGE ROAD**  
**AT WILLIS DRIVE**  
**STOCKBRIDGE, GEORGIA**

ISSUE DATE: 2-4-2019  
 PRELIM-BUDGET  
 REVISION 1: \_\_\_\_\_  
 REVISION 2: \_\_\_\_\_  
 REVISION 3: \_\_\_\_\_  
 REVISION 4: \_\_\_\_\_

PROJECT #: 18-164-000  
 CONTENT: WALL SECTIONS

PROJECT ARCHITECT: ECE  
 DRAWN BY: BH/CDD

CADD FILE NAME: 18-164 CDA-4.2 WALL SECTIONS

THIS DRAWING AND THE DESIGN SHOWN ARE THE PROPERTY OF ESO. THE REPRODUCTION, OR USE OF THIS DRAWING WITHOUT THEIR WRITTEN CONSENT IS PROHIBITED. ANY INFRINGEMENT IS SUBJECT TO LEGAL ACTION.

Sheet **A-4.2**