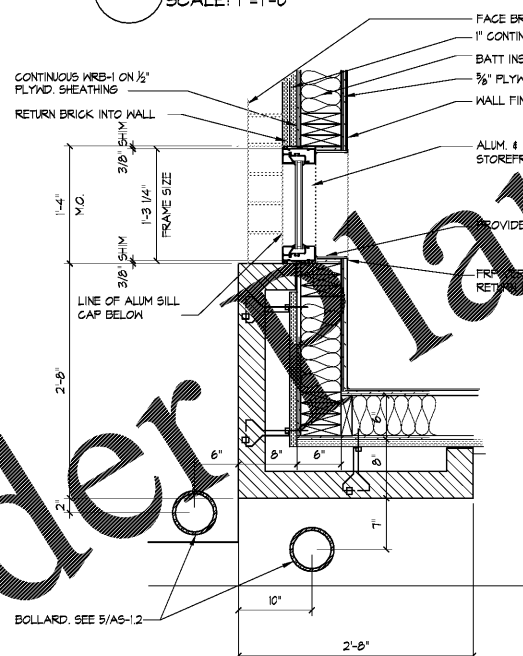
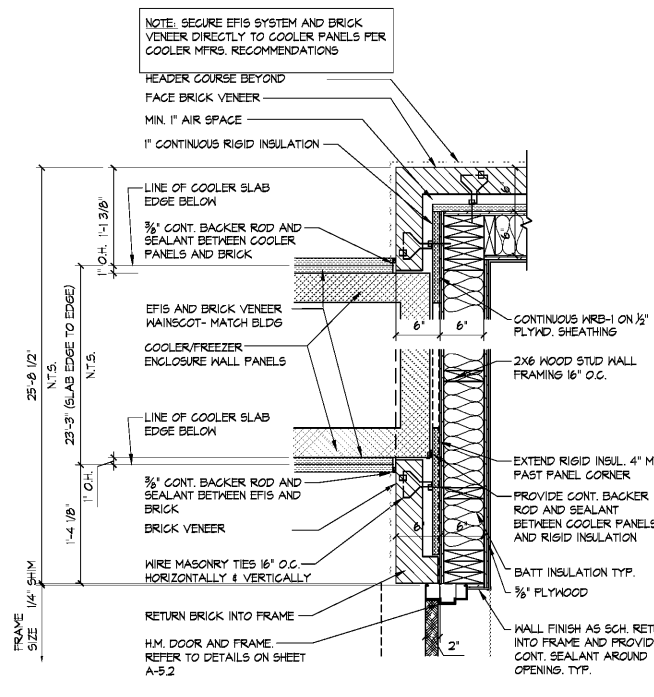
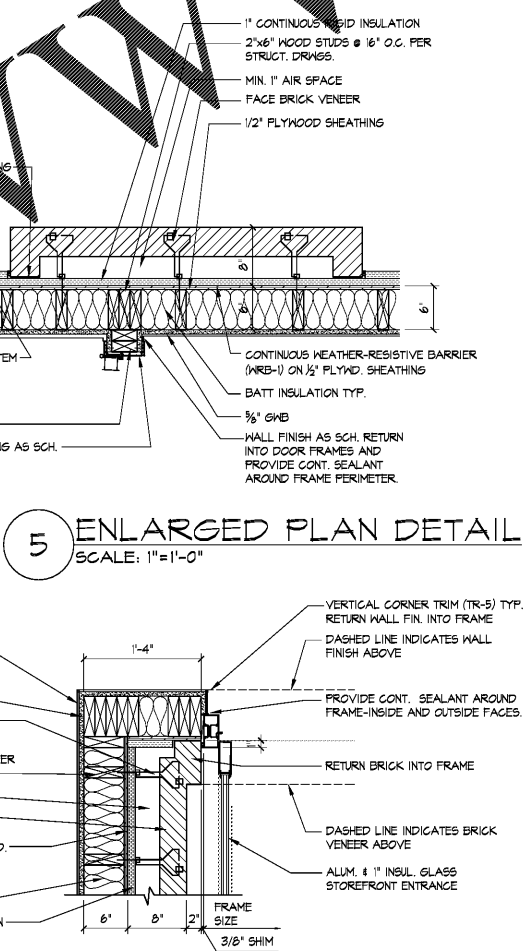
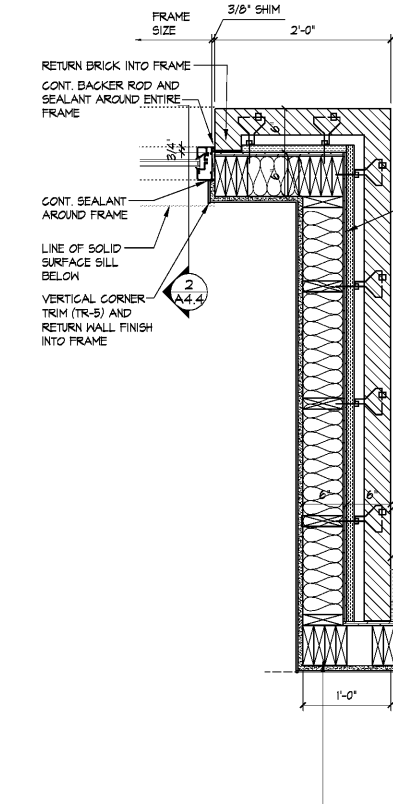


P:\CLIENT FILES\Bojangles' 18-164-000 Bojangles' (F) Stockbridge GA\06-CD's-NEW PITCH Roof\A02-2 ENLARGED WALL DETAILS.dwg, Plotted By: rsevers, Plotted: Feb 04, 2019 - 3:41pm

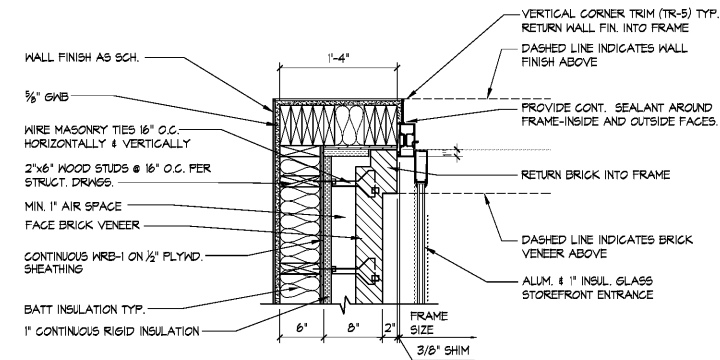
Order Plans @



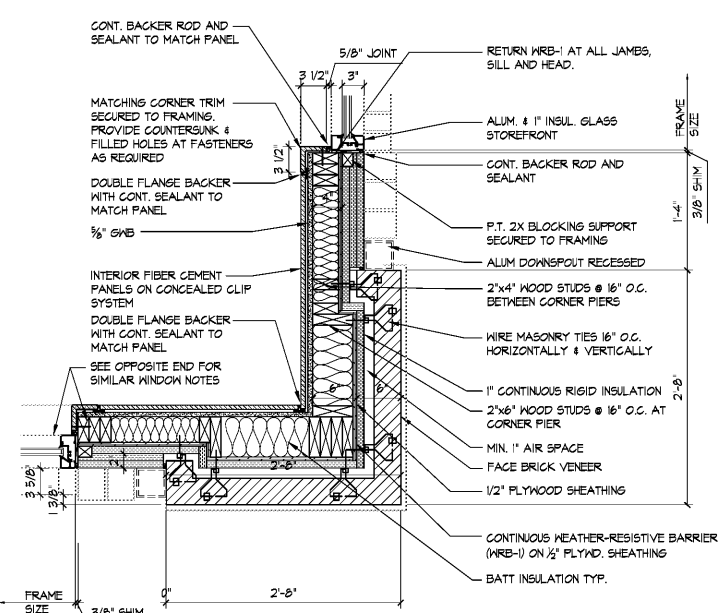
6 ENLARGED PLAN DETAIL SCALE: 1"=1'-0"



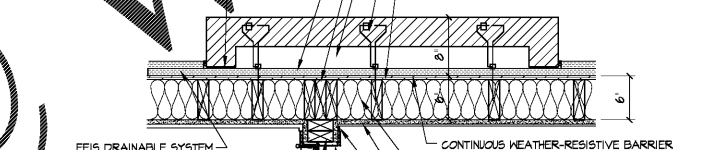
4 ENLARGED PLAN DETAIL SCALE: 1"=1'-0"



1 ENLARGED PLAN DETAIL SCALE: 1"=1'-0"



2 ENLARGED PLAN DETAIL SCALE: 1"=1'-0"



8 ENLARGED PLAN DETAIL SCALE: 1"=1'-0"

NOTE: FOR AIR & WATER RESISTIVE BARRIER (WRB-1) INSTALLATION SHALL BE IN STRICT ACCORDANCE WITH MFR'S INSTRUCTIONS. WRB SHALL BE CONTINUOUS AT ENTIRE EXTERIOR OF BUILDING. WRB SHALL BE SHINGLED TO SHED WATER & ALL LAPS TAPED. RETURN WRB AT JAMBS OF ALL OPENINGS. ANY AND ALL PENETRATIONS SHALL BE PATCHED & SEALED. WATER AND AIR TIGHT WITH MATERIALS APPROVED BY WRAP MFR. FOR (1) LAYER OF DUPONT TYVEK COMMERCIAL WRAP OR ARCHITECT'S APPROVED SUBSTITUTION APPLIED CONTINUOUSLY TO ALL SHEATHING SURFACES THROUGHOUT THE BUILDING.

GENERAL NOTES:
1) PROVIDE SELF-ADHERED MEMBRANE FLASHING (COMPATIBLE WITH WRB) AROUND ENTIRE PERIMETER OF ALL EXTERIOR OPENINGS.
2) INSTALL THRU-WALL FLASHING, SUB-SILL FLASHING, & DASHES AT EXTERIOR WINDOW OPENINGS - PROVIDE BACKER ROD & SEALANT AROUND ENTIRE PERIMETER OF ALL OPENINGS.
3) PROVIDE BLOCKING AS REQUIRED AROUND EXTERIOR OPENINGS FOR PROPER INSTALLATION.

THE ARCHITECT/ENGINEER DOES NOT DEFINE THE SCOPE OF INDIVIDUAL TRADES, SUBCONTRACTORS, MATERIAL SUPPLIERS, OR VENDORS. ANY SHEET NUMBERING SYSTEM USED WHICH IDENTIFIES DISCIPLINES IS SOLELY TO SEPARATE ARCHITECT'S AND ENGINEER'S SCOPE. IT DOES NOT DEFINE A SUBCONTRACTOR'S SCOPE OF WORK. ANY DISCREPANCIES BETWEEN DRAWINGS, SPECIFICATIONS, CODES OR CONSTRUCTION SEQUENCING SHALL BE BROUGHT TO THE ATTENTION OF THE ARCHITECT PRIOR TO PROCEEDING. NO CONSIDERATION WILL BE GIVEN TO REQUESTS FOR CHANGE ORDERS FOR FAILURE TO OBTAIN AND REVIEW THE COMPLETE SET OF CONSTRUCTION DOCUMENTS, OR FOR FAILURE TO SEEK INTERPRETATION FROM ARCHITECT FOR DISCREPANCIES.

BOJANGLES' 14 RESTAURANT
HUDSON BRIDGE ROAD
AT WILLIS DRIVE
STOCKBRIDGE, GEORGIA

ISSUE DATE: 2-4-2019
PRELIM-BUDGET
REVISION 1: ---
REVISION 2: ---
REVISION 3: ---
REVISION 4: ---

PROJECT #: 18-164-000
CONTENT: ENLARGED PLAN DETAILS

PROJECT ARCHITECT: ECE
DRAWN BY: BH/CDD

CADD FILE NAME: 18-164CDVA-2.2 PLAN DETAILS

THIS DRAWING AND THE DESIGN SHOWN ARE THE PROPERTY OF E3D. THE REPRODUCTION, OR USE OF THIS DRAWING WITHOUT THEIR WRITTEN CONSENT IS PROHIBITED. ANY INFRINGEMENT IS SUBJECT TO LEGAL ACTION.

Sheet A-2.2