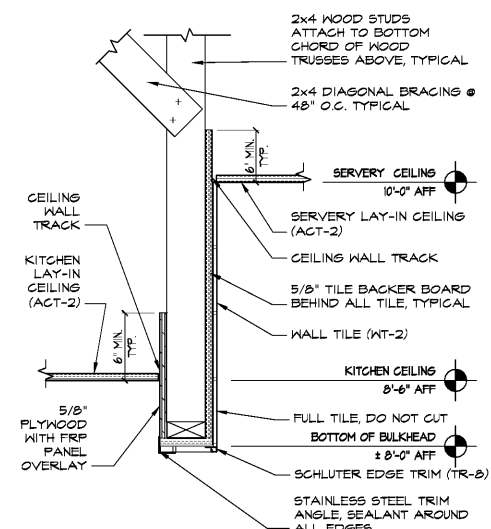
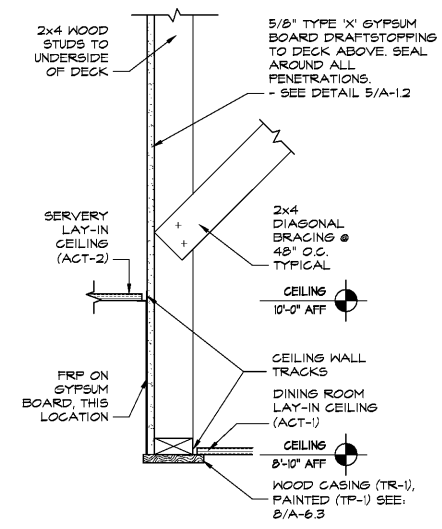


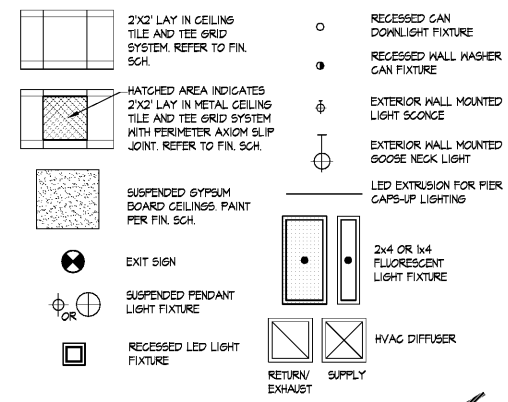
4 DRAFT STOP DETAIL
SCALE: 1-1/2"=1'-0"



3 SECTION AT BULKHEAD
SCALE: 1-1/2"=1'-0"



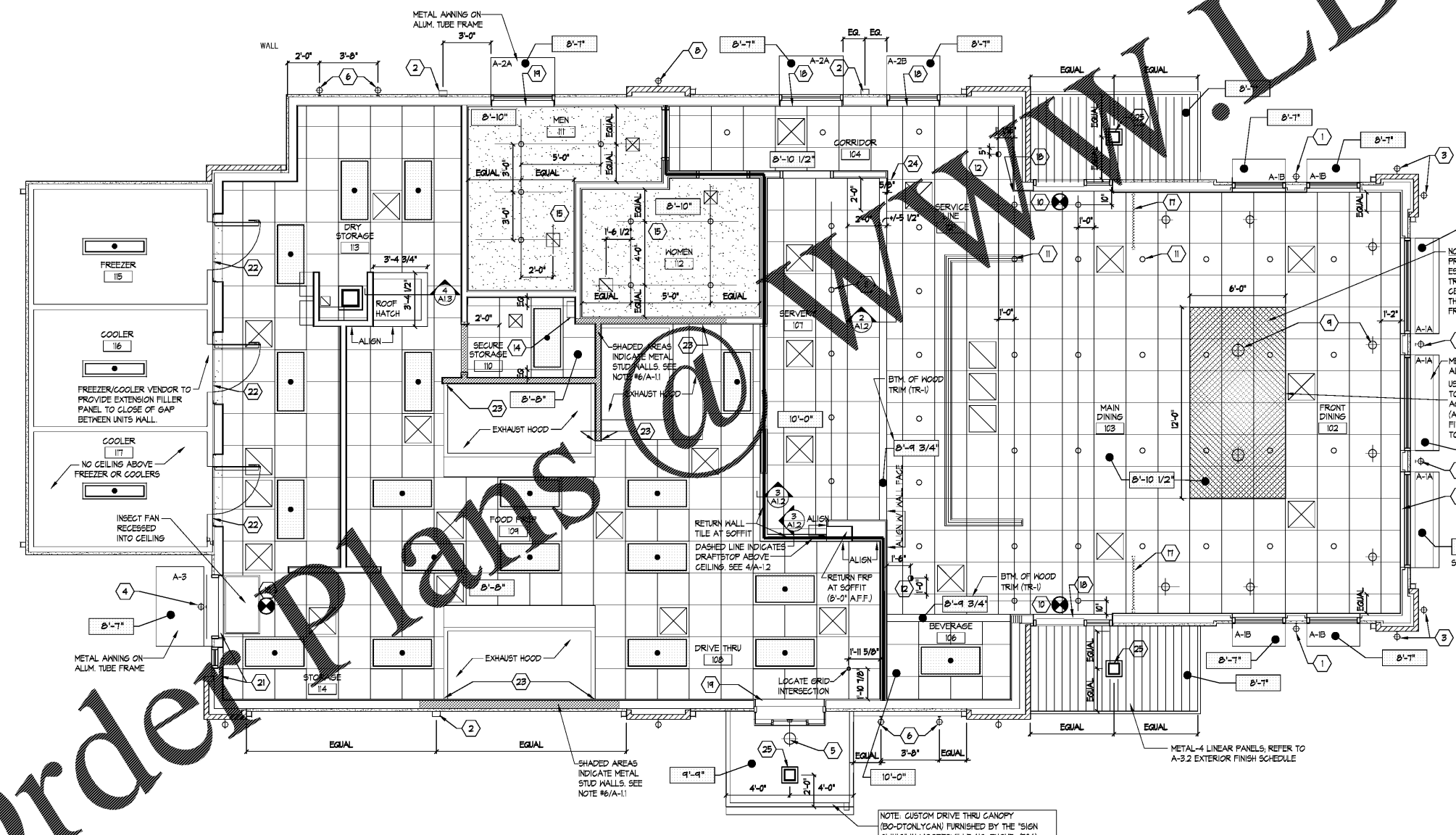
2 SECTION AT BULKHEAD
SCALE: 1-1/2"=1'-0"



CEILING NOTES:

- GENERAL CONTRACTOR SHALL NOTIFY ARCHITECT OF ANY PROBLEMS WITH CEILING HEIGHTS OR LIGHT FIXTURES BEFORE FINISH CEILINGS ARE INSTALLED. IF THE CONTRACTOR FAILS TO DO SO, HE SHALL BE RESPONSIBLE FOR TAKING DOWN THE CEILING & LIGHT FIXTURES AND REINSTALLING THEM IN A CONFIGURATION ACCEPTABLE TO THE ARCHITECT AT NO ADDITIONAL COST.
- COORDINATE WORK WITH OTHER TRADES HAVING WORK IN THE CEILING INCLUDING BUT NOT LIMITED TO: TELEPHONE, SECURITY, CABLE COMPANIES WHEREVER THEIR RESPECTIVE WORK IS CONTIGUOUS.
- PROVIDE CUTOUTS AND OTHER SPECIAL PROVISIONS IN ACCORDANCE WITH AS REQUIRED FOR LIGHTING FIXTURES, REGISTERS, DIFFUSERS, AND OTHER INSERTS.
- ALL MATERIALS SHALL HAVE CLASS 1 FLAME SPREAD RATING AND BE INSTALLED IN ACCORDANCE WITH MANUFACTURER'S WRITTEN SPECIFICATIONS AND CODES.
- ALL JOINTS IN THE TILE SHALL BE SAME LEVEL AND ALIGN WITH EACH OTHER.
- ALL CEILING FIXTURES, EXIT SIGNS, SPEAKERS, ETC. SHALL BE CENTERED IN CEILING TILE, UNLESS NOTED OTHERWISE.
- SEE ENGINEER'S PLANS FOR LIGHTING AND MECHANICAL LAYOUTS. CONTRACTOR SHALL NOTIFY ARCHITECT OF ANY DISCREPANCIES NOTED BETWEEN ARCHITECTURAL AND ENGINEERING DRAWINGS BETWEEN ENGINEERING DISCIPLINES. C.S. COORDINATE ALL LIGHT DAMPERS TO BE IN REACH FROM ACCESSIBLE CEILINGS.
- RECESSED CEILING SPEAKERS TO BE INSTALLED BY OWNER'S VENDOR. GC COORDINATE.
- DIMENSIONS SHOWN ON CEILING GRID PROVIDED TO LOCATE GRID AS SHOWN ON PLAN.

SEISMIC COMPLIANCE NOTE (SEISMIC DESIGN CATEGORY C):
ALL SUSPENDED ELEMENTS IN THE STRUCTURE, INCLUDING CEILINGS, SHALL BE FINISHED & INSTALLED IN ACCORDANCE WITH THE SEISMIC REQUIREMENTS OF THE INTERNATIONAL BUILDING CODE, CHAPTER 16 (FOR SEISMIC DESIGN CATEGORY 'C') REQUIREMENTS OF ASTM E580 AND THE LATEST VERSION OF CISCA GUIDELINES FOR ZONES 1&2.



- KEYED NOTES:**
- MOUNT SCONGE HOUSING AT 8'-4" A.F.F. CENTER ON PIER UNLESS OTHERWISE NOTED.
 - MOUNT BOTTOM OF WALL PACK AT 10'-0" A.F.F.
 - MOUNT SCONGE HOUSING AT 5'-8" A.F.F. AND CENTER ON PIER.
 - MOUNT LED HOUSING AT 7'-6" A.F.F. CENTER ON DOOR.
 - MOUNT SCONGE HOUSING AT 4'-0" A.F.F. CENTER OVER DRIVE THRU WINDOW.
 - MOUNT GOOSE NECK HOUSING AT 11'-0" A.F.F. GC TO COORDINATE FINAL HT. WITH BOJANGLES REPRESENTATIVE AND GRAPHICS VENDOR.
 - GC TO COORDINATE PENDANT LIGHT POSITIONS ACCORDING TO THE TABLE/FURNITURE LAYOUT. TYPICAL FOR ALL PENDANT LIGHTS IN DINING AREA. FIXTURE MOUNTED 6'-8" A.F.F.
 - MOUNT SCONGE HOUSING AT 11'-0" A.F.F. AND CENTER ON PIER.
 - GC TO COORDINATE PENDANT LIGHT POSITIONS ACCORDING TO THE TABLE/FURNITURE LAYOUT. TYPICAL FOR ALL PENDANT LIGHTS IN DINING AREA. FIXTURE MOUNTED 7'-3" A.F.F.
 - CENTER EXIT LIGHT ABOVE DOOR.
 - CENTER DOWN LIGHTS IN CENTER OF 2'x2' CEILING TILE UNLESS OTHERWISE NOTED.
 - RECESSED WALL WASHER. COORDINATE FINAL LOCATION WITH BOJANGLES REPRESENTATIVE AND GRAPHICS VENDOR.
 - ROOF ACCESS LADDER ALCOVE.
 - LOCATE SECURITY PANEL AT 96" A.F.F. BY OWNER'S SECURITY VENDOR. GC TO COORDINATE.
 - SUSPENDED GYPSUM BOARD CEILINGS IN RESTROOMS USING ARMSTRONG "DRYHALL GRID SYSTEM" - DO NOT FRAME WITH STUDS (CP-1). ALIGN HVAC DIFFUSERS AS NOTED ON PLAN.
 - LINEAR LED EXTRUSION AT (6) EXTERIOR EIFS PIER CAP ABOVE. REFER TO ROOF PLAN AND WALL SECTIONS.
 - PROVIDE BLOCKING/BRACING SUPPORT FOR DECORATIVE GLASS PARTITION AT ABOVE CEILING GRID. COORDINATE WITH VENDOR.
 - RETURN VINYL PLANK TILES INTO HEAD FRAME.
 - RETURN WALL TILE INTO FRAME.
 - RETURN NICHIA CORNER TRIM INTO HEAD FRAME. TYP. FOR (1) FRONT DINING WINDOWS.
 - RETURN FRP INTO FRAME.
 - RETURN ACT GRID AND TILE INTO STN. STL. COOLER/FREEZER DOOR TRIM. COORDINATE IN THE FIELD.
 - GAP BETWEEN HOODS AND WALL TO BE ENCLOSED WITH STAINLESS STEEL BY HOOD SUPPLIER. TYP.
 - FINISHED FASCIA IS OFFSET FROM FINISHED WALL END
 - COORDINATE LIGHT FIXTURE INSTALLATION WITH CANOPY VENDOR

1 REFLECTED CEILING PLAN
SCALE: 1/4"=1'-0"

Order Plans

BOJANGLES' 14 RESTAURANT
HUDSON BRIDGE ROAD
AT WILLIS DRIVE
STOCKBRIDGE, GEORGIA

ISSUE DATE: 2-4-2019
 PRELIM_BUDGET
 REVISION 1: _____
 REVISION 2: _____
 REVISION 3: _____
 REVISION 4: _____
 PROJECT #: 18-164-000
 CONTENT: REFLECTED CEILING PLAN & DETAILS
 PROJECT ARCHITECT: ECE
 DRAWN BY: BH/CDD

CADD FILE NAME: 18-164-000-2 REFLECTED CLG PLAN
 THIS DRAWING AND THE DESIGN SHOWN ARE THE PROPERTY OF ECE. THE REPRODUCTION, OR USE OF THIS DRAWING WITHOUT THEIR WRITTEN CONSENT IS PROHIBITED. ANY INFRINGEMENT IS SUBJECT TO LEGAL ACTION.
 Sheet
A-1.2

THE ARCHITECT/ENGINEER DOES NOT DEFINE THE SCOPE OF INDIVIDUAL TRADES, SUBCONTRACTORS, MATERIAL SUPPLIERS, OR VENDORS. ANY SHEET NUMBERING SYSTEM USED WHICH IDENTIFIES DISCIPLINES IS SOLELY TO SEPARATE ARCHITECTS AND ENGINEER'S SCOPE. IT DOES NOT DEFINE A SUBCONTRACTOR'S SCOPE OF WORK. ANY DISCREPANCIES BETWEEN DRAWINGS, SPECIFICATIONS, CODES OR CONSTRUCTION SEQUENCING SHALL BE BROUGHT TO THE ATTENTION OF THE ARCHITECT PRIOR TO PROCEEDING. NO CONSIDERATION WILL BE GIVEN TO REQUESTS FOR CHANGE ORDERS FOR FAILURE TO OBTAIN AND REVIEW THE COMPLETE SET OF CONSTRUCTION DOCUMENTS, OR FOR FAILURE TO SEEK INTERPRETATION FROM ARCHITECT FOR DISCREPANCIES.

421 Penman Street, Suite 200, Charlotte, NC 28203
 Email: esd@esdarch.com • Phone: 704-373-1900