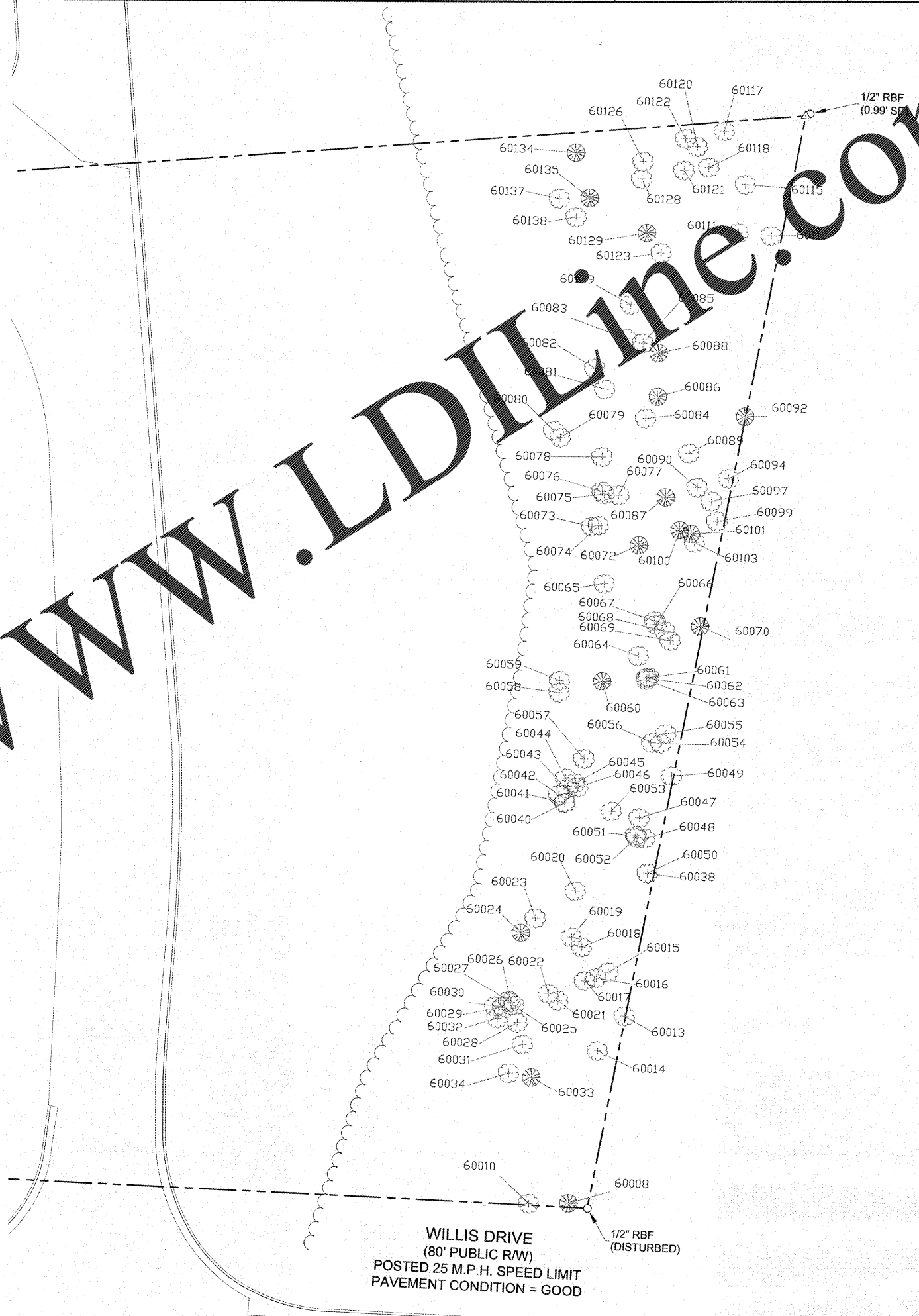


| POINT # | DIA | DESC | NOTE |
|---------|-----|------|------|
| 60008 | 3" | EV | |
| 60010 | 24" | HW | |
| 60013 | 3" | HW | |
| 60014 | 4" | HW | |
| 60015 | 4" | HW | |
| 60016 | 3" | HW | |
| 60017 | 6" | HW | |
| 60018 | 12" | HW | |
| 60019 | 8" | HW | |
| 60020 | 3" | HW | |
| 60021 | 12" | HW | |
| 60022 | 4" | HW | |
| 60023 | 4" | HW | |
| 60024 | 8" | EV | |
| 60025 | 4" | HW | |
| 60026 | 3" | HW | |
| 60027 | 3" | HW | |
| 60028 | 5" | HW | |
| 60029 | 5" | HW | |
| 60030 | 4" | HW | |
| 60031 | 4" | HW | |
| 60032 | 4" | HW | |
| 60033 | 5" | EV | |
| 60034 | 4" | HW | |
| 60038 | 4" | HW | |
| 60040 | 8" | HW | |
| 60041 | 6" | HW | |
| 60042 | 6" | HW | |
| 60043 | 4" | HW | |
| 60044 | 4" | HW | |
| 60045 | 4" | HW | |
| 60046 | 6" | HW | |
| 60047 | 12" | HW | |
| 60048 | 4" | HW | |
| 60049 | 4" | HW | |

| POINT # | DIA | DESC | NOTE |
|---------|-----|------|------|
| 60050 | 6" | HW | |
| 60051 | 4" | HW | |
| 60052 | 4" | HW | |
| 60053 | 4" | HW | |
| 60054 | 4" | HW | |
| 60055 | 3" | HW | |
| 60056 | 6" | HW | |
| 60057 | 3" | HW | |
| 60058 | 6" | HW | |
| 60059 | 4" | HW | |
| 60060 | 14" | EV | |
| 60061 | 4" | HW | |
| 60062 | 4" | HW | |
| 60063 | 4" | HW | |
| 60064 | 4" | HW | |
| 60065 | 6" | HW | |
| 60066 | 4" | HW | |
| 60067 | 4" | HW | |
| 60068 | 4" | HW | |
| 60069 | 3" | HW | |
| 60070 | 3" | EV | |
| 60072 | 3" | EV | |
| 60073 | 3" | HW | |
| 60074 | 3" | HW | |
| 60075 | 4" | HW | |
| 60076 | 4" | HW | |
| 60077 | 4" | HW | |
| 60078 | 5" | HW | |
| 60079 | 5" | HW | |
| 60080 | 5" | HW | |
| 60081 | 4" | HW | |
| 60082 | 14" | HW | |
| 60083 | 12" | HW | |
| 60084 | 3" | HW | |
| 60085 | 8" | HW | |

| POINT # | DIA | DESC | NOTE |
|---------|-----|------|------|
| 60086 | 12" | EV | |
| 60087 | 6" | EV | |
| 60088 | 6" | EV | |
| 60089 | 3" | HW | |
| 60090 | 3" | HW | |
| 60092 | 3" | EV | |
| 60094 | 3" | HW | |
| 60097 | 3" | HW | |
| 60100 | 3" | EV | |
| 60101 | 4" | EV | |
| 60103 | 3" | HW | |
| 60110 | 12" | HW | |
| 60111 | 3" | HW | |
| 60115 | 3" | HW | |
| 60117 | HW | | |
| 60118 | HW | | |
| 60120 | 6" | HW | |
| 60121 | 3" | HW | |
| 60122 | 3" | HW | |
| 60126 | 3" | HW | |
| 60128 | 3" | HW | |
| 60129 | 6" | EV | |
| 60135 | 6" | EV | |
| 60137 | 6" | HW | |
| 60138 | 3" | HW | |
| 60139 | 3" | HW | |



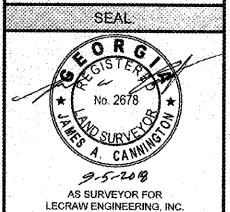
Order Plans @ www.LDOnline.com

SURVEYOR'S CERTIFICATION
 THIS SURVEY WAS PREPARED IN CONFORMITY WITH THE TECHNICAL STANDARDS FOR PROPERTY SURVEYS IN GEORGIA AS SET FORTH IN CHAPTER 1907 OF THE RULES OF THE GEORGIA BOARD OF REGISTRATION FOR PROFESSIONAL ENGINEERS AND LAND SURVEYORS AND AS SET FORTH IN THE GEORGIA PLAT ACT O.C.G.A. 15-6-67 AUTHORITY O.C.G.A. SECS. 15-6-67, 43-15-4, 43-15-6, 43-15-19, 43-15-22.

LECRAW ENGINEERING, INC.
 3475 CORPORATE WAY
 DULUTH, GA 30098
 PHONE - 770-546-8100
 FAX - 770-441-0288
 WWW.LECRAWENGINEERING.COM
 LSP001180

| DATE | BY | DESCRIPTION |
|------------|-----|---------------------|
| 06/03/2018 | JAC | ACCEDED TREE SURVEY |
| 07/24/2018 | AK | REVISED TREE SURVEY |
| 08/15/2018 | AK | REVISED TREE SURVEY |

PROJECT
 ALTANSPS LAND TITLE SURVEY
 PREPARED FOR:
 MULTISITE PROPERTIES LLC, A NEVADA LIMITED LIABILITY COMPANY AND FIRST AMERICAN TITLE INSURANCE COMPANY
 LOCATED IN LAND LOT 21, 6TH DISTRICT,
 HENRY COUNTY, GEORGIA



SURVEY TEAM:
 DRAWN BY: AK
 FIELD WORK BY: KBW
 REVIEWED BY: JAC



SCALE & NORTH ARROW:
 NORTH ARROW (SEE NOTE 6)
 GRAPHIC SCALE: 1"=12'

JOB #: 237002
 SHEET: 3 OF 3