

ABBREVIATIONS

- AC = ACOUSTICAL CEILING
ACT = ACOUSTICAL CEILING TILE
ADA = AMERICANS WITH DISABILITIES ACT
ADJ. = ADJUSTABLE
A.F.F. = ABOVE FINISHED FLOOR
ALUM. = ALUMINUM
BM = BEAM
BLDG. = BUILDING
B.O.S. = BOTTOM OF STEEL
C.B. = CATCH BASIN
CE. = CEMENT
C.T. = CERAMIC TILE
CLR. = CLEAR
CLG. = CEILING
C.O. = CLEAN OUT
COL. = COLUMN
CONG. = CONCRETE
CONT. = CONTINUOUS
CMU = CONCRETE MASONRY UNIT
CPT. = CARPET
D.B. = DOOR BELL
D.F. = DRINKING FOUNTAIN
D.P. = DOUBLE
DML = DEMOLITION
DIM. = DIMENSION
DISP. = DISPENSER
DN. = DOWN
D.O. = DOOR OPENING
DOR. = DOOR
D.S. = DOWN SPOUT
DTL. = DETAIL
DWG. = DRAWING
E. = EAST
E.A. = EACH
EIFS = EXTERIOR INSULATING FINISH SYSTEM
E.I. = EXPANSION JOINT
ELEC. = ELECTRICAL
ELEV. = ELEVATOR
EMER. = EMERGENCY
E.O.S. = EDGE OF SLAB
E.Q. = EQUAL/EQUIDISTANT
E.W.C. = ELECTRIC WATER COOLER
EXIST. = EXISTING
EXP. = EXPANSION
EXT. = EXTERIOR
F.A. = FIRE ALARM
F.D. = FLOOR DRAIN
F.E. = FIRE EXTINGUISHER ON WALL BRACKET
F.E.C. = FIRE EXTINGUISHER CABINET
F.F. = FINISHED FLOOR
FIN. = FINISH
FL. = FLOOR
FLR. = FLOOR
FLUOR. = FLUORESCENT
F.O.F. = FACE OF FINISH
F.O.S. = FACE OF STUD
F.O.M. = FACE OF MASONRY
FT. = FOOT
F.TG. = FOOTING
FRT. = FIRE RETARDANT TREATED
FUR. = FURNISHING
FUT. = FUTURE
G. = GROUND
G.A. = GALVANIZED
G.S.B. = GRAB BAR
GL. = GLASS/GLAZING
GND. = GROUND
GY. = GYPSUM BOARD
GR. = GROUT
H.C. = HOLLOW CORE
H.M. = HOLLOW METAL
H.W. = HARDWARE
HORZ. = HORIZONTAL
I.D. = INSIDE DIAMETER
INSUL. = INSULATION
INT. = INTERIOR
J. = JOINT
J.T. = LAVATORY
L.V. = LAVATORY
L.B./L.B.S. = FOUND/FOUNDS
L.V. = LONGER LEGS VERTICAL
M. = METAL
M.F. = MANUFACTURE/MANUFACTURER
MIN. = MINIMUM
M.O. = MASONRY OPENING
M.R. = MOISTURE RESISTANT
M.T.D. = MOUNTED
N. = NORTH
N.I.C. = NOT IN CONTRACT
N.A. = NOT APPLICABLE
N.R. = NOT RATED
O.C. = OUTSIDE DIAMETER/OVERFLOW DRAIN ON CENTER
O.C.C. = OWNER FURNISHED CONTRACTOR INSTALLED
O.H. = OPERATE/HAND
O.P. = OPERABLE / OPERATION
O.S.H.A. = OCCUPATIONAL SAFETY & HEALTH ADMIN.
P.L. = PLATE
P.L.A.S. LAM. = PLASTIC LAMINATE
P.L.M.B. = PLUMBING
P. = PAIR
P.T. = PRESSURE TREATED
R. = RADIUS
R.D. = ROOF DRAIN
REF. = REFRIGERATOR
REQ. = REQUIRED/REQUIREMENT
R.M. = ROOM
R.O. = ROUGH OPENING
S. = SOUTH
SIM. = SIMILAR
SPEC. = SPECIFICATION
STC = SOUND TRANSMISSION CLASS
STL. = STEEL
STOR. = STORAGE
S.S. = STAINLESS STEEL
SUSP. = SUSPENDED
TOP OF PARAPET = TOP OF PARAPET
TOP OF ROOF = TOP OF ROOF
T.O.S. = TOP OF STEEL
T.O.W. = TOP OF WALL
TELE. = TELEPHONE
TRIP. = TRIPLE
TYP. = TYPICAL
V.C.T. = VERTICAL COMPACT TILE
V.P.L. = VERTICAL PLASTER
V.I.F. = VERTICAL FINISH
V.O.N. = VERTICAL OPENING
W. = WITH
W/O = WITHOUT
W.C. = WATER CLOSET
W.D. = WATER HEATER
W.P. = WATERPROOF
W.R. = WATER RESISTANT
WT. = WEIGHT

BUILDING CODE SUMMARY FOR COMMERCIAL PROJECTS INTERNATIONAL BUILDING CODE 2012

Contact CBI General Contractors with questions:

770-619-2855 x120
estimating@cbigc.com

YEAR EDITION OF CODE: INTERNATIONAL BUILDING CODE 2012 IBC WITH 2015 6A AMENDMENTS, 2014 IBC (401-2017)

BUILDING DATA
Construction Type: I-A, I-B, I-C, I-D, I-E, I-F

Sprinklers: No, Yes
Standpipes: No, Yes Class I, II, III
Fire District: No, Yes

Table with 3 columns: FLOOR, EXISTING (SQ FT), NEW (SQ FT), SUB-TOTAL

Table with 5 columns: FLOOR ROOM OR SPACE DESIGNATION, OCCUPANCY, AREA/OCCUPANT, SQUARE FOOTAGE, NUMBER OF OCCUPANTS

Table with 5 columns: FLOOR ROOM OR SPACE DESIGNATION, MINIMUM NUMBER OF EXITS, TRAVEL DISTANCE, ARRANGEMENT MEANS OF EGRESS

Table with 7 columns: USE GROUP OR SPACE DESCRIPTION, AREA, AREA/OCCUPANT, CALCULATED OCCUPANT LOAD, EGRESS WIDTH PER OCCUPANT, REQUIRED EXIT WIDTH, ACTUAL WIDTH SHOWN ON PLANS

NOTES
1. PROVIDE ALL WORK AND MATERIALS IN ACCORDANCE WITH CURRENT LOCAL BUILDING CODES AND ORDINANCES.

ALLOWABLE AREA table with columns: Primary Occupancy, Secondary Occupancy, Mixed Occupancy

Special Occupancy: 508.2, 508.3, 508.4, 508.5, 508.6, 508.7
Mixed Occupancy: No, Yes Separation: N/A Hr. Exception: --

Table with 7 columns: STORY NO., DESCRIPTION AND USE, (A) B.O.S. AREA PER STORY ACTUAL, (B) TABLE 503.1 AREA, (C) AREA FOR OPEN SPACE INCREASE 1, (D) AREA FOR SPRINKLER INCREASE 1, (E) ALLOWABLE AREA OR UNLIMITED 1, (F) MAXIMUM BUILDING AREA 1

Open space area increases from Section 506.1 are computed thus:
a. Perimeter which fronts a public way or open space having 20 feet minimum width = (F) --

ALLOWABLE HEIGHT table with columns: FLOOR, ALLOWABLE (TABLE 503), INCREASE FOR SPRINKLERS, SHOWN ON PLANS, CODE REFERENCE

ACCESSIBLE PARKING table with columns: LOT OR PARKING AREA, TOTAL # OF PARKING SPACES, # OF ACCESSIBLE SPACES PROVIDED

SPECIAL APPROVALS
Special approval: (Local Jurisdiction, Department of Insurance, SBCCI, ICC) describe below

SCOPE OF SPECIAL INSPECTION SERVICES
No special inspections required for this project

The following sheets comprise the required schedule of special inspections for this project. The construction documents shall include the special inspections for this project as follows:

Notes regarding special inspections and specific requirements.

GENERAL NOTES

- 1. GENERAL CONTRACTOR TO VERIFY ALL REQUIREMENTS AS TO EXACT SIZE AND QUANTITY OF EQUIPMENT FURNISHED BY THE OWNER AND BE RESPONSIBLE FOR ALL ROUGH IN CONNECTIONS.
2. EACH SUBCONTRACTOR IS RESPONSIBLE FOR ANY DAMAGE TO ADJACENT WORK AND SHALL HAVE EXISTING CONTRACTOR ON THE JOB REPAIR SAID DAMAGE AT THEIR OWN EXPENSE.

FIRE PROTECTION REQUIREMENTS

Table with columns: BUILDING ELEMENT, FIRE SEPARATION (RATED), RATIO, DETAIL AND SHEET, DESIGN # FOR RATED ASSEMBLY, DESIGN # FOR RATED PENETRATION, DESIGN # FOR RATED JOINT

LIFE SAFETY SYSTEM REQUIREMENTS
Emergency Lighting: No, Yes
Exit Signs: No, Yes
Fire Alarms: No, Yes
Smoke Detection Systems: No, Yes
Panic Hardware: No, Yes

DESIGN LOADS:
THIS SECTION PROVIDED IN STRUCTURAL DRAWINGS-IF STRUCTURAL DRAWINGS ARE A COMPONENT OF THIS PROJECT LOCATED IN: STOCKBRIDGE, GA

MECHANICAL SYSTEMS, SERVICE SYSTEMS AND EQUIPMENT METHOD OF COMPLIANCE:
THIS SECTION PROVIDED IN MECHANICAL DRAWINGS-IF MECHANICAL DRAWINGS ARE A COMPONENT OF THIS PROJECT

PLUMBING FIXTURE REQUIREMENTS table with columns: OCCUPANCY, MATERIALS USED, INITIALS, LAVA STRESS, SHOWERS, DRINKING FOUNTAINS

ENERGY REQUIREMENTS:
The following data shall be considered minimum and any special attribute required to meet the energy code shall also be provided.

THERMAL ENVELOPE METHOD OF COMPLIANCE:

Roofceiling Assembly (each assembly)
Description of assembly: REFER TO HALL SECTIONS
U-Value of total assembly: 0.25
R-Value of insulation: REFER TO ROOF PLAN

Walls adjacent to unconditioned space (each assembly)
Description of assembly:
U-Value of total assembly:
R-Value of insulation:

OWNER PROVIDED ITEMS

- 1. GENERAL CONTRACTOR IS TO CONTACT BOJANGLES' RESTAURANTS INC. FOR INFORMATION REGARDING OWNER FURNISHED EQUIPMENT VERSUS CONTRACTOR FURNISHED EQUIPMENT.
2. GENERAL CONTRACTOR IS TO CONTACT BOJANGLES' RESTAURANTS INC. FOR INFORMATION REGARDING ELEMENTS INSTALLED BY THE OWNER (OR OWNER'S VENDOR) VERSUS ELEMENTS INSTALLED BY THE CONTRACTOR.

SUBSTITUTIONS
NOTE: SUBSTITUTIONS ARE ALLOWED WITH THE APPROVAL OF THE BOJANGLES' PROJECT MANAGER AND IF THE SUBSTITUTION MEETS OR EXCEEDS THE STANDARD SET BY THE PRODUCT SPECIFIED HERE. SEE SPECIFICATIONS FOR ADDITIONAL REQUIREMENTS.

ALTERNATES
1. DEDUCT ALTERNATE #1: DELETE STORAGE ROOM WASTE ENCLOSURE. SEE SHEET AS-1.
2. ADD-ALTERNATE #2: RELOCATE G02 WASTE ENCLOSURE BUILDING INTERIOR WASTE ENCLOSURE INCLUDING ALL RELATED PIPING, VENTS, ETC. TO PROVIDE A COMPLETE INSTALLATION. SEE SHEETS AS-1, AS-2.

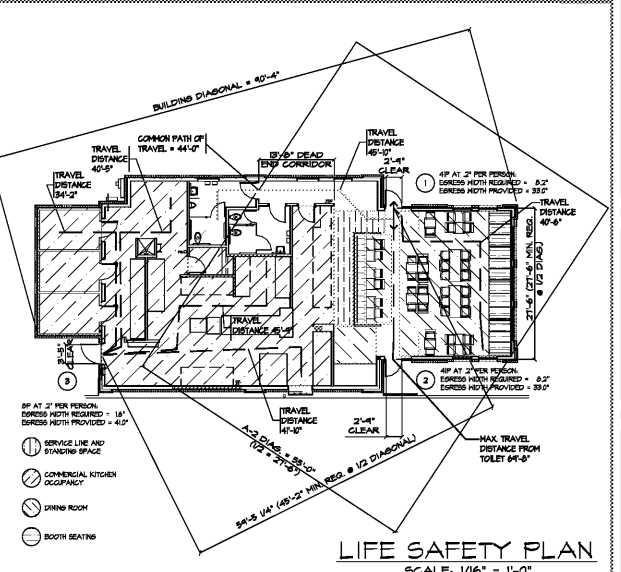
WALL SYSTEMS
1. PROVIDE TAPE-BAND, FEATHERED SMOOTH GYPSUM BOARD WALLS FROM FLOOR TO MINIMUM 4" ABOVE CEILING.
2. ALL DRYWALL CORNERS TO HAVE METAL CORNER BEADS. ALL CORNERS AND JOINTS TO BE MUDD, TAPE AND FINISHED IN ACCORDANCE WITH MANUFACTURER'S WRITTEN RECOMMENDATIONS.

4. PRIOR TO RECEIVING FINISH, ALL SURFACES SHALL BE PROPERLY PREPARED AS REQUIRED, BY MANUFACTURER'S WRITTEN INSTRUCTION, TO RECEIVE FINAL FINISHING AS SPECIFIED.

5. INTERIOR TILE: PROVIDE 5/8" TILE BACKER BOARD AT ALL LOCATIONS WHERE TILE OCCURS ON VERTICAL SURFACES. SEE WALL DETAILS ON SHEET A-6.3 FOR ADDITIONAL INFORMATION.

6. PROVIDE 5/8" PLYWOOD COVERED WITH FIBER REINFORCED PLASTIC PANELS WHERE INDICATED IN KITCHEN AREAS.
7. PROVIDE 5/8" TILE BACKER BOARD WITH STAINLESS STEEL OVERLAY BEHIND AND ADJACENT TO KITCHEN VENT HOODS. THIS FINISH MUST BE ATTACHED TO METAL STUDS AND EXTEND 8" PAST THE VENT HOODS IN ALL DIRECTIONS.

8. ANCHOR INTERIOR STUD WALLS TO CONCRETE SLAB WITH POWDER ACTUATED FASTENERS OR EXPANSION ANCHORS AT 32" O.C. (MASONRY NAILS SHALL NOT BE USED).



ISSUE DATE: 2-4-2019
PRELIM-BUDGET
REVISION 1:
REVISION 2:
REVISION 3:
REVISION 4:
PROJECT #: 18-164-000
CONTENT: CODE SUM LIFE SAFETY PLAN AND GENERAL NOTES
PROJECT ARCHITECT: ECE
DRAWN BY: BH/CDD
CADD FILE NAME: 18-164-000-A-02 APPENDIX B

THE ARCHITECT/ENGINEER DOES NOT DEFINE THE SCOPE OF INDIVIDUAL TRADES, SUBCONTRACTORS, MATERIAL SUPPLIERS, OR VENDORS. ANY SHEET NUMBERING SYSTEM USED WHICH IDENTIFIES DISCIPLINES IS SOLELY TO SEPARATE ARCHITECT'S AND ENGINEER'S SCOPE. IT DOES NOT DEFINE A SUBCONTRACTOR'S SCOPE OF WORK. ANY DISCREPANCIES BETWEEN DRAWINGS, SPECIFICATIONS, CODES OR CONSTRUCTION SEQUENCING SHALL BE BROUGHT TO THE ATTENTION OF THE ARCHITECT PRIOR TO PROCEEDING. NO CONSIDERATION WILL BE GIVEN TO REQUESTS FOR CHANGE ORDERS FOR FAILURE TO OBTAIN AND REVIEW THE COMPLETE SET OF CONSTRUCTION DOCUMENTS, OR FOR FAILURE TO SEEK INTERPRETATION FROM ARCHITECT FOR DISCREPANCIES.



NOT FOR CONSTRUCTION

BOJANGLES' 14 RESTAURANT HUDSON BRIDGE ROAD AT WILLIS DRIVE STOCKBRIDGE, GEORGIA

NOT FOR CONSTRUCTION

Sheet A-0.2