

ELECTRIC SINGLE LINE EQUIPMENT SCHEDULE

NOTES:
ALL CONDUIT SIZES INDICATED ARE MINIMUM SIZES. INCREASE SIZES AS REQUIRED TO ACCOMMODATE CONDUCTOR PULLING EASE, FIELD CONDITIONS, ETC.
"CU" = COPPER CONDUCTOR, "AL" = ALUMINUM CONDUCTOR

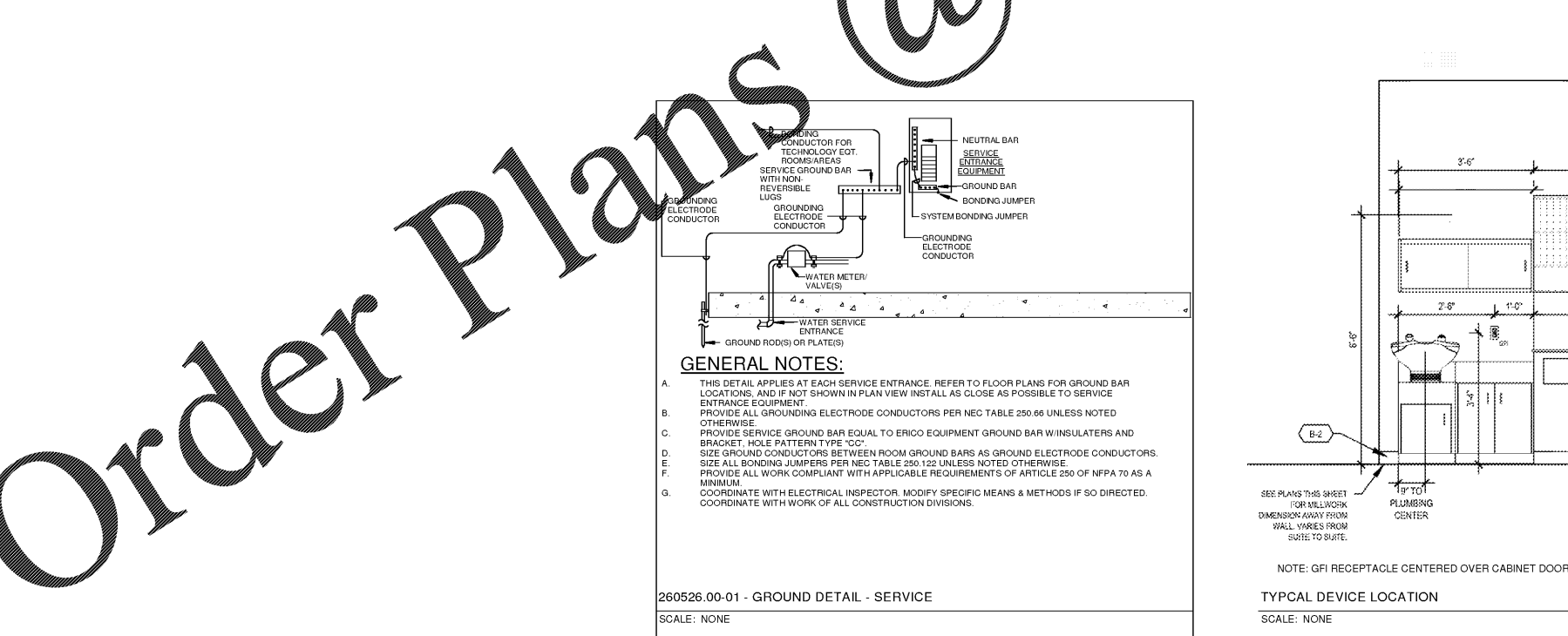
TYPICAL EQUIPMENT NAME NOMENCLATURE:
1 - POWER DISTRIBUTION SYSTEM (BLANK - NORMAL, E - EMERGENCY, S - STANDBY, L - LIFE SAFETY)
2 - DESCRIPTION (H - 480Y/277V, L - 208Y/120V)
3 - FLOOR / LEVEL
4 - SEQUENCE

FEEDER ID NOMENCLATURE:
* - INDICATES FEEDER SIZED TO COMPENSATE FOR VOLTAGE DROP
1 - GROUND TYPE (MAY BE BLANK)
U = EQUIPMENT GROUND CONDUCTOR REMOVED FOR SERVICE ENTRANCE FROM UTILITY
P = PARITY-SIZED EQUIPMENT GROUND CONDUCTOR
X = EXISTING FEEDER TO REMAIN UNLESS OTHERWISE NOTED
T = UPSIZED GROUND CONDUCTORS FOR TRANSFORMER SECONDARY

2 - CONDUCTOR AMPACITY
3 - TOTAL NUMBER OF PHASE AND GROUND ("NEUTRAL") CONDUCTORS
4 - CONDUCTOR MATERIAL: C = COPPER, A = ALUMINUM
5 - SPECIAL (MAY BE BLANK)
I = ISOLATED GROUND (PROVIDE CONTINUOUS INSULATED ISOLATED EQUIPMENT GROUNDING CONDUCTORS FROM INSULATED ISOLATED GROUND BARS) TO RESPECTIVE UPSTREAM SERVICE ENTRANCE OR DERIVED FROM GROUNDING ELECTRODE CONDUCTOR AS APPLICABLE.

EQUIPMENT	PHASE	EQUIPMENT TYPE	SUPPLY FROM	VOLTAGE	POLES	WIRES	DEMAND (kVA)	DEMAND (A)	MAINS RATING (A)	MAINS FRAME RATING (A)	MAINS TYPE	FEEDER ID	FEEDER	VD %	ENCLOSURE TYPE	FAULT CURRENT (A)	SHORT CIRCUIT RATING (A)	NOTES
UTILITY	Existing	Pole Mounted Transformer	UTILITY	480	3	3									NEMA 3R	43000		EXISTING SET OF 3 50kVA POLE MOUNTED TRANSFORMERS COORDINATE WITH THE LOCAL UTILITY COMPANY TO INCREASE THE SERVICE SIZE TO THE EXISTING UTILITY COMPANY OUTLINE THAT THE TRANSFORMERS ARE SUFFICIENT TO INCREASE THE EXISTING SERVICE BY 20%.
DM	New Construction	Fused Switch	UTILITY	208	3	4	136.8 kVA	380 A	800	800	THERMAL MAGNETIC	X800	EXISTING FEEDER, AT RATING INDICATED, TO REMAIN UNLESS NOTED OTHERWISE	0.112	NEMA 3R	39390	42000	COORDINATE ALL WORK DONE WITH THE MAIN DISCONNECT WITH THE UTILITY COMPANY TO ENSURE A SOLID WHERE THE WORK IS TO BE PERFORMED WITHOUT AFFECTING NORMAL BUSINESS HOURS FOR TENANTS OF THE BUILDING.
WIREWAY	Existing	WireWay	DM	208	3	4	136.8 kVA	380 A	800	800		800-4C	(3) SETS OF (4) #300 KCMIL CU, (1) #1/0 AWG CU GND. IN 3" CONDUIT	0.127	NEMA 3R	38861	42000	
A1	Existing	Fused Switch	WIREWAY	208	3	4	79.2 kVA	220 A	225	225	FUSED	X225	EXISTING FEEDER, AT RATING INDICATED, TO REMAIN UNLESS NOTED OTHERWISE	0.14	NEMA 3R	38228	EXISTING	
B	New Construction	Branch Panelboard	A1	208	3	4	79.2 kVA	220 A	225	225	MAIN LUGS ONLY	225-4C	(4) #4/0 AWG CU, (1) #4 AWG CU GND. IN 3" CONDUIT	0.638	NEMA 1	23577		
A2	Existing	Fused Switch	WIREWAY	208	3	4	62.6 kVA	174 A	175	175	FUSED	TAP175-4C	(4) #2/0 AWG CU, (1) #1/0 AWG CU GND. IN 2" CONDUIT	0.44	NEMA 3R	23731	23731	
A	New Construction	Branch Panelboard	A2	208	3	4	62.6 kVA	174 A	175	175	MAIN LUGS ONLY	175-4C	(4) #2/0 AWG CU, (1) #4 AWG CU GND. IN 2" CONDUIT	0.661	NEMA 1	23948	23948	

EQUIPMENT	PHASE	EQUIPMENT TYPE	SUPPLY FROM	VOLTAGE	POLES	WIRES	DEMAND (kVA)	DEMAND (A)	MAINS RATING (A)	MAINS FRAME RATING (A)	MAINS TYPE	FEEDER ID	FEEDER	VD %	ENCLOSURE TYPE	FAULT CURRENT (A)	SHORT CIRCUIT RATING (A)	NOTES
UTILITY	Existing	Pole Mounted Transformer	UTILITY	480	3	3									NEMA 3R	43000		EXISTING SET OF 3 50kVA POLE MOUNTED TRANSFORMERS COORDINATE WITH THE LOCAL UTILITY COMPANY TO INCREASE THE SERVICE SIZE TO THE EXISTING UTILITY COMPANY OUTLINE THAT THE TRANSFORMERS ARE SUFFICIENT TO INCREASE THE EXISTING SERVICE BY 20%.
DM	New Construction	Fused Switch	UTILITY	208	3	4	136.8 kVA	380 A	800	800	THERMAL MAGNETIC	X800	EXISTING FEEDER, AT RATING INDICATED, TO REMAIN UNLESS NOTED OTHERWISE	0.112	NEMA 3R	39390	42000	COORDINATE ALL WORK DONE WITH THE MAIN DISCONNECT WITH THE UTILITY COMPANY TO ENSURE A SOLID WHERE THE WORK IS TO BE PERFORMED WITHOUT AFFECTING NORMAL BUSINESS HOURS FOR TENANTS OF THE BUILDING.
WIREWAY	Existing	WireWay	DM	208	3	4	136.8 kVA	380 A	800	800		800-4C	(3) SETS OF (4) #300 KCMIL CU, (1) #1/0 AWG CU GND. IN 3" CONDUIT	0.127	NEMA 3R	38861	42000	
A1	Existing	Fused Switch	WIREWAY	208	3	4	79.2 kVA	220 A	225	225	FUSED	X225	EXISTING FEEDER, AT RATING INDICATED, TO REMAIN UNLESS NOTED OTHERWISE	0.14	NEMA 3R	38228	EXISTING	
B	New Construction	Branch Panelboard	A1	208	3	4	79.2 kVA	220 A	225	225	MAIN LUGS ONLY	225-4C	(4) #4/0 AWG CU, (1) #4 AWG CU GND. IN 3" CONDUIT	0.638	NEMA 1	23577		
A2	Existing	Fused Switch	WIREWAY	208	3	4	62.6 kVA	174 A	175	175	FUSED	TAP175-4C	(4) #2/0 AWG CU, (1) #1/0 AWG CU GND. IN 2" CONDUIT	0.44	NEMA 3R	23731	23731	
A	New Construction	Branch Panelboard	A2	208	3	4	62.6 kVA	174 A	175	175	MAIN LUGS ONLY	175-4C	(4) #2/0 AWG CU, (1) #4 AWG CU GND. IN 2" CONDUIT	0.661	NEMA 1	23948	23948	



GENERAL NOTES:

A. THIS DETAIL APPLIES AT EACH SERVICE ENTRANCE. REFER TO FLOOR PLANS FOR GROUND BAR LOCATIONS, AND IF NOT SHOWN IN PLAN VIEW INSTALL AS CLOSE AS POSSIBLE TO SERVICE ENTRANCE EQUIPMENT.

B. PROVIDE ALL GROUNDING ELECTRODE CONDUCTORS PER NEC TABLE 250.66 UNLESS NOTED OTHERWISE.

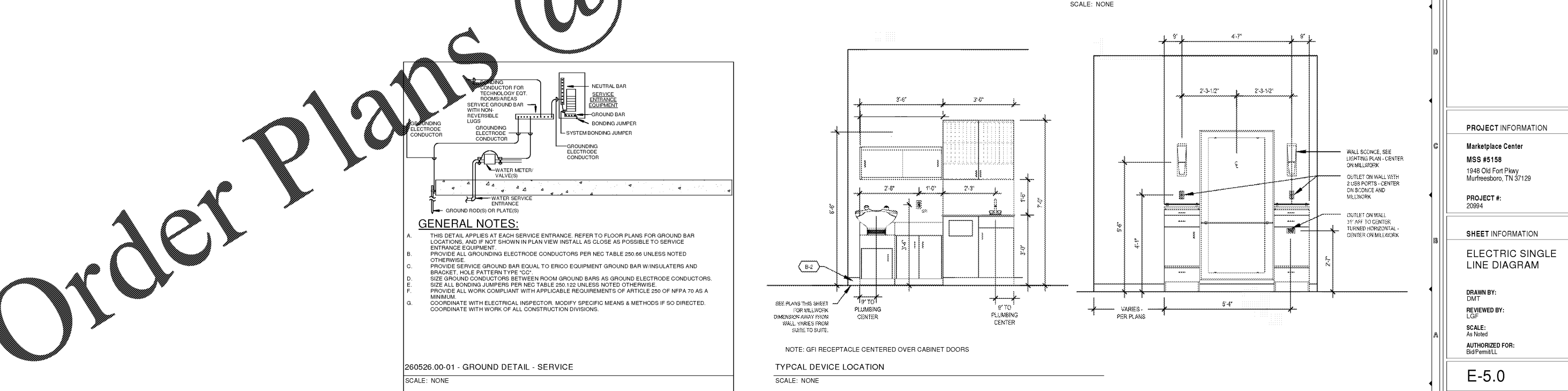
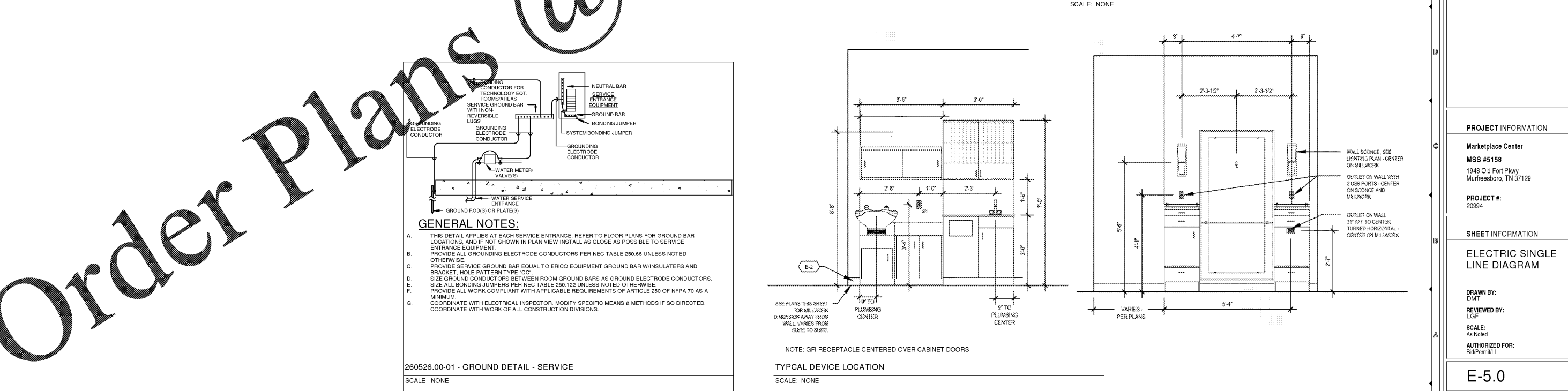
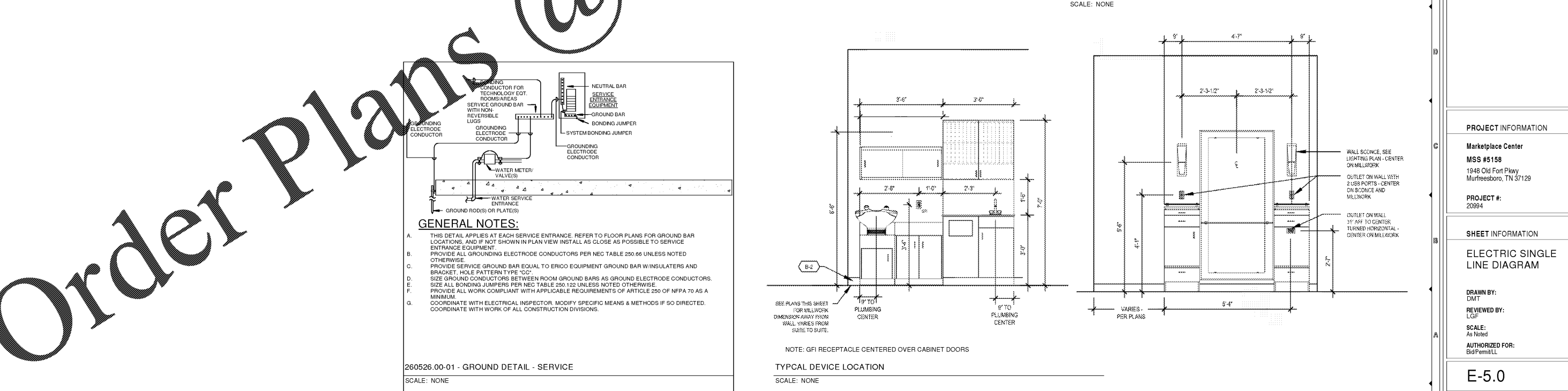
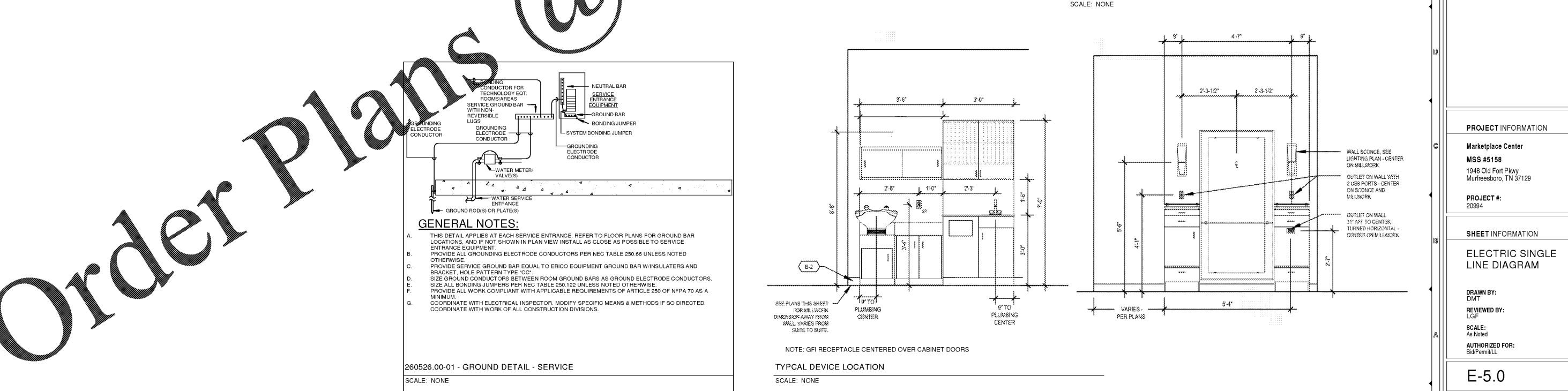
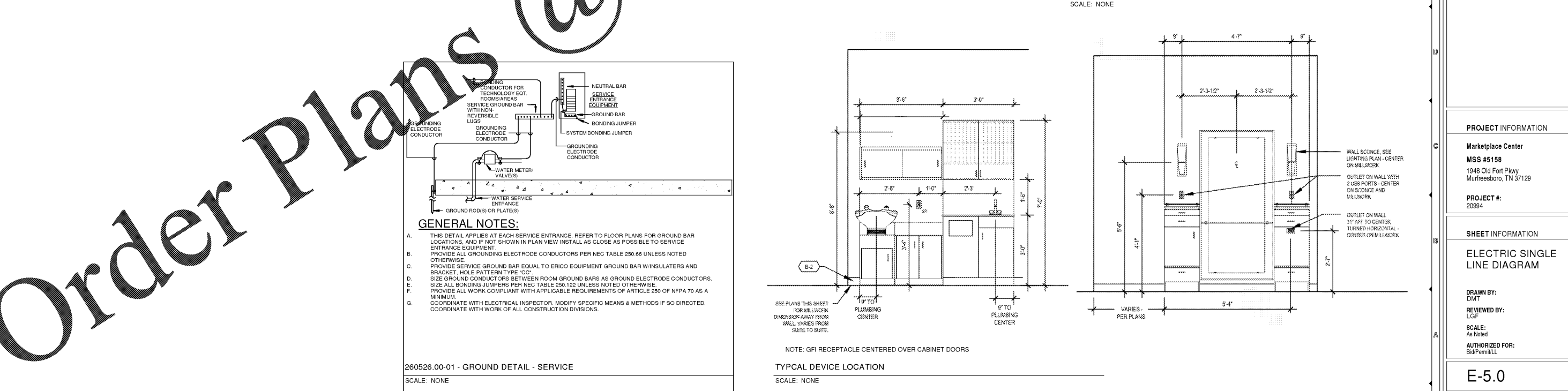
C. PROVIDE SERVICE GROUND BAR EQUAL TO ERICO EQUIPMENT GROUND BAR W/INSULATORS AND BRACKET. HOLE PATTERN TYPE "CC".

D. SIZE GROUND CONDUCTORS BETWEEN ROOM GROUND BARS AS GROUND ELECTRODE CONDUCTORS. SIZE ALL BONDING JUMPERS PER NEC TABLE 250.122 UNLESS NOTED OTHERWISE.

E. PROVIDE ALL WORK COMPLIANT WITH APPLICABLE REQUIREMENTS OF ARTICLE 250 OF NFPA 70 AS A MINIMUM.

F. COORDINATE WITH ELECTRICAL INSPECTOR. MODIFY SPECIFIC MEANS & METHODS IF SO DIRECTED.

G. COORDINATE WITH WORK OF ALL CONSTRUCTION DIVISIONS.



WWW.LDDESIGN.COM

MY SALON Suite

FRCH / ARCHITECTURE, INC., P.C.

ISSUE INFORMATION
1.10.2019

REVISIONS

