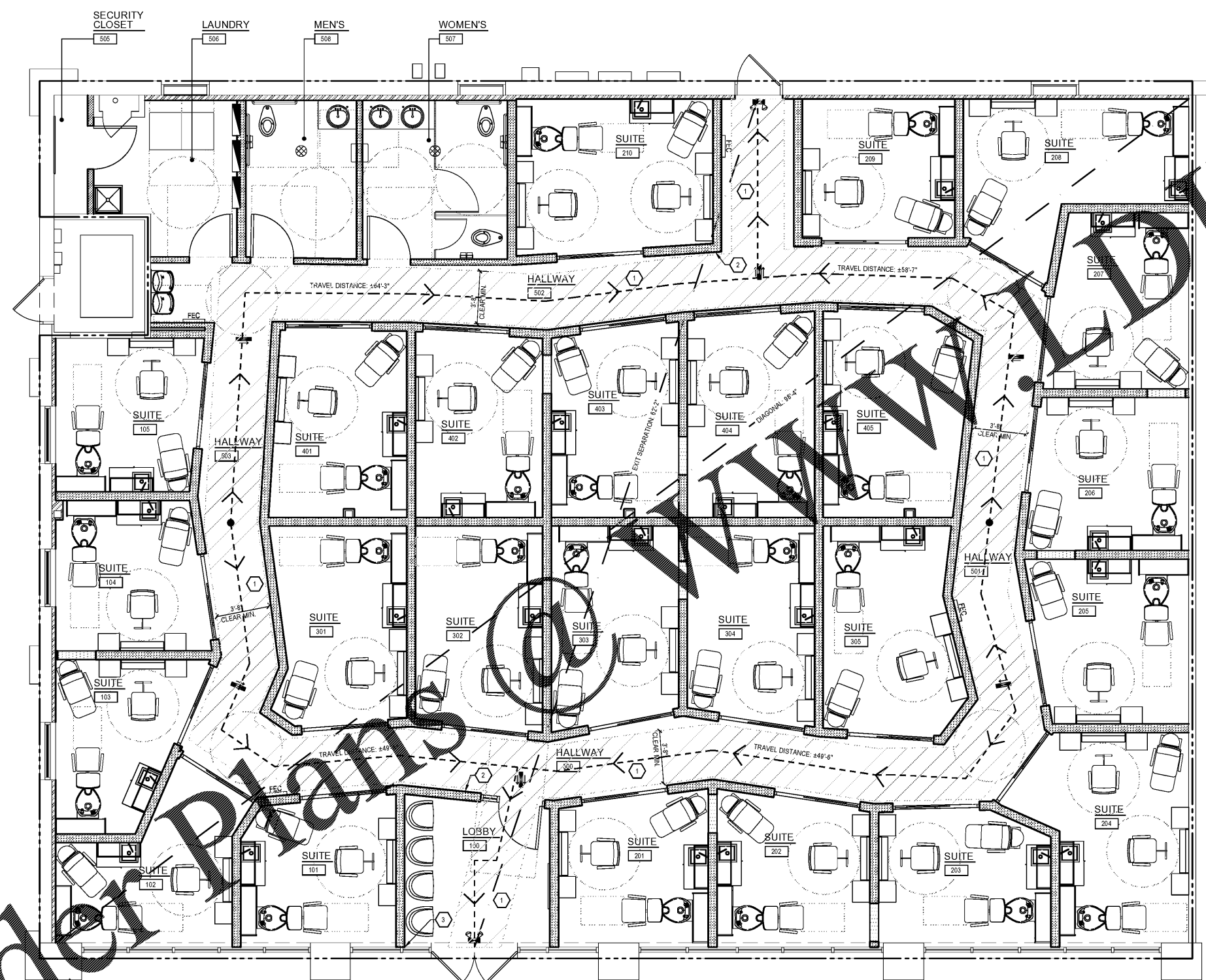


USER: KPOHLBEERS PLOTTED: 16/01/19 - 8:32 PM P:\0352020\6566\0005\Arch\04\04\SS5\559\Murfee\2019\71\_02\04\04\EGRESSPLAN.dwg LAYOUT: G-004

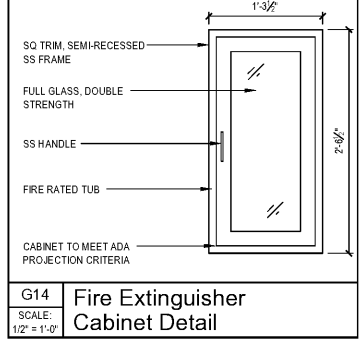


**GENERAL NOTES**  
1. SEE SHEET G-001 FOR BUILDING CODE INFORMATION.

**KEY NOTES**  
1. 4" MIN. EGRESS PATH - FOR REFERENCE ONLY.  
2. PROVIDE TACTILE & BRAILLE EXIT SIGNS ON WALL @ EXIT DOORS. SEE DETAILS ON A-401 FOR MORE INFO.

**FIXTURE SCHEDULE**

SYMBOL	MARK	DESCRIPTION	NOTES
X-1		EXIT SIGN	SEE RCP & ELEC DWGS FOR MORE INFO
E-3		EMERGENCY EXIT SIGN	SEE RCP & ELEC DWGS FOR MORE INFO
FEC	FEC	FIRE EXTINGUISHER -2A:10BC	TO BE SEMI-RECESSED IN WALL IN APPROVED CABINET AT LOCATION INDICATED ON DRAWINGS. LOCATION MUST NOT EXCEED A DISTANCE OF 75' TO ANY POINT WITHIN SUITE. SEE DETAIL ON THIS SHEET.



**FRCH**  
DESIGN WORLDWIDE  
384 Elm Street Suite 600  
Cincinnati OH 45202  
513.251.9000  
www.frch.com

**MY SALON Suite**

**ISSUE INFORMATION**

**REVISIONS**

FRCH Nelco Architecture, Inc.

**PROJECT INFORMATION**

**Marketplace Center  
MSS #5158**

1948 Old Fort Pkwy  
Murfreesboro, TN 37129

PROJECT #:  
035986.000

**SHEET INFORMATION**

**EGRESS PLAN**

DRAWN BY:  
KRP  
REVIEWED BY:  
SA / RR  
SCALE:  
As Noted  
AUTHORIZED FOR:  
Bid/Permit/LL

**G-004**

**EGRESS PLAN**

G-004 SCALE: 1/4" = 1'-0"

