

REVISIONS:

LIGHTING PLAN

DATE: E1

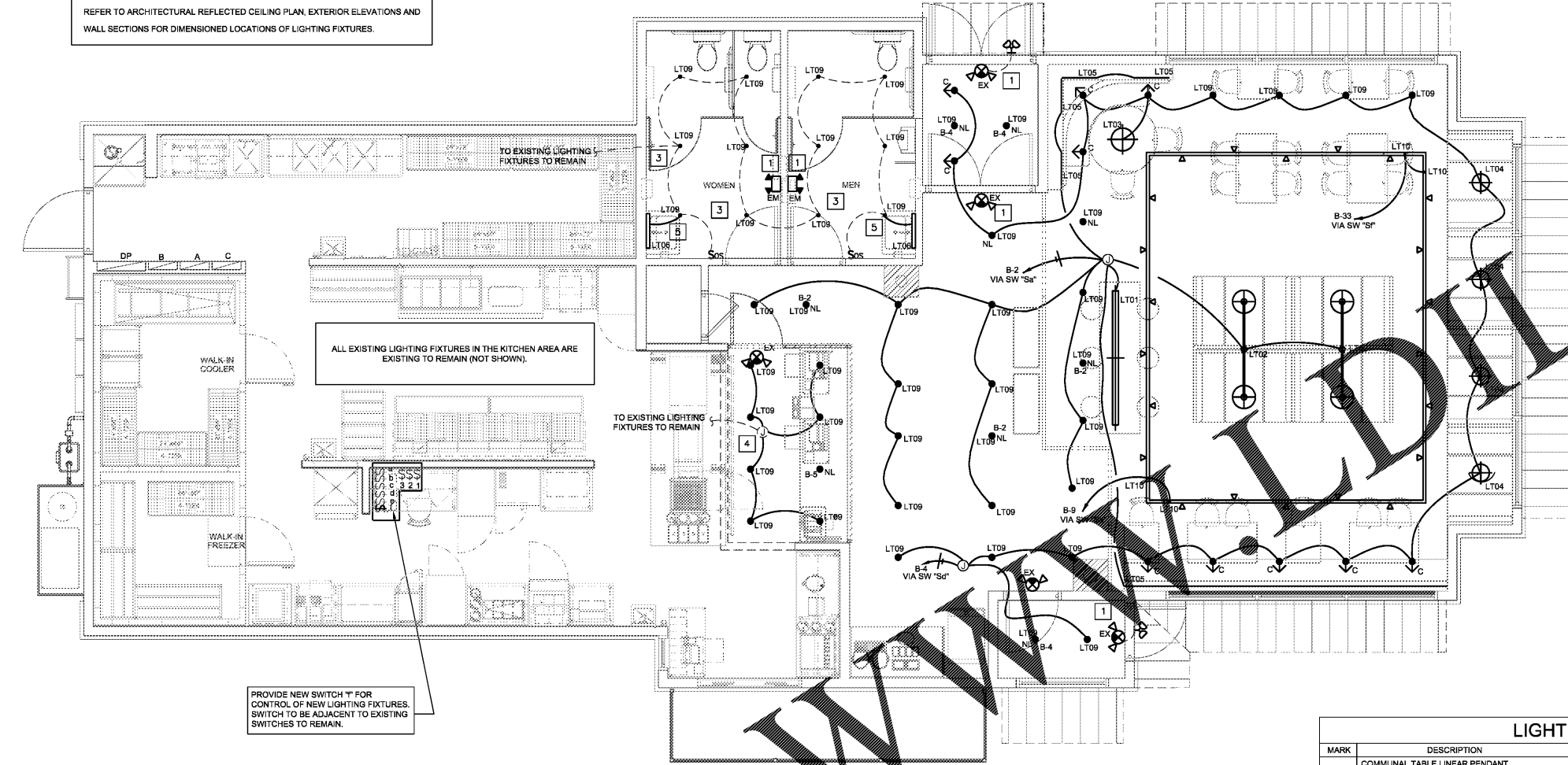
12/19/18

CHECKED: KR

SHEET NOTES:

- ALL "EX" EMERGENCY & EXIT LIGHTING FIXTURES SHALL BE CONNECTED AHEAD OF ROOM/AREA SWITCHES PER NATIONAL ELECTRICAL CODE (NEC) ARTICLE 700-12(F).
- HOMERUNS MAY BE COMBINED AS ALLOWED BY THE NATIONAL ELECT. CODE ALL CONDUIT SHALL BE SIZED PER THE 2002 NEC.
- CONTRACTOR TO REPLACE EXISTING LIGHTING FIXTURES AND CONTROL SWITCH IN RESTROOM WITH NEW FIXTURES AND OCCUPANCY CONTROL SWITCH AS SHOWN. CONTRACTOR TO REUSE EXISTING CONDUIT AND WIRING AND RECONNECT TO EXISTING CIRCUIT CURRENTLY SERVING FIXTURES IN REST ROOMS. FIXTURES AND CONTROLS ARE TO BE INSTALLED IN EXISTING FIXTURE LOCATIONS. LOAD ON CIRCUIT TO BE REDUCED DUE TO THE REDUCTION IN MOUNTAGE OF THE FIXTURE LOAD.
- CONNECT NEW LIGHTING FIXTURES TO EXISTING CIRCUIT SHOWN. REFER TO PANEL SCHEDULE FOR NEW LOAD ON CIRCUIT. CONTRACTOR MAY USE EXISTING CONDUIT AND WIRING IF CONDUIT AND WIRING IS FOUND TO BE IN GOOD CONDITION. CONDUIT AND WIRING SHALL BE REPLACED IF REPLACED. CONTRACTOR SHALL REPAIR WITH NEW #12 @ 34°C
- CONNECT NEW WALL MOUNTED LUMINAIRES TO EXISTING LIGHTS AND CONTROLS IN THIS AREA.

NOTE:  
REFER TO ARCHITECTURAL REFLECTED CEILING PLAN, EXTERIOR ELEVATIONS AND WALL SECTIONS FOR DIMENSIONED LOCATIONS OF LIGHTING FIXTURES.



PROVIDE NEW SWITCH 'T' FOR CONTROL OF NEW LIGHTING FIXTURES. SWITCH TO BE ADJACENT TO EXISTING SWITCHES TO REMAIN.

ALL EXISTING LIGHTING FIXTURES IN THE KITCHEN AREA ARE EXISTING TO REMAIN (NOT SHOWN).

TO EXISTING LIGHTING FIXTURES TO REMAIN

ALL EXISTING EXTERIOR LIGHTING FIXTURES ARE EXISTING TO REMAIN (NOT SHOWN).

1 LIGHTING PLAN  
E1 1/4"=1'-0"

NOTE:  
ALL DEVICES, WIRING AND CONDUIT ARE EXISTING TO REMAIN UNLESS OTHERWISE INDICATED AS NEW OR RELOCATED.

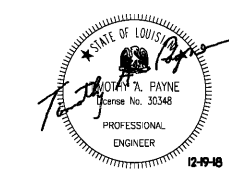
LIGHT FIXTURE SCHEDULE					
MARK	DESCRIPTION	MANUFACTURER	LIGHT FIXTURE	COLOR	BULBS
LT01	COMMUNAL TABLE LINEAR PENDANT. 2700K COLOR TEMP. SEE FIXTURE SPEC ON SHEET E4.	GOODSHOP MANUFACTURIES	SEE FIXTURE SPEC ON SHEET E4.	2700K	15W LED (E26) BASE RETROFIT
LT02	ARC LIGHTS AFFIXED TO FURNITURE BQ-04 2700K COLOR TEMP. SEE FIXTURE SPEC ON SHEET E4.	GOODSHOP MANUFACTURIES	SEE FIXTURE SPEC ON SHEET E4.	2700K	(2) 12W LED BULB 24W TOTAL
LT03	FAMILY NOOK PENDANT PENDANT. 2700K COLOR TEMP. SEE FIXTURE SPEC ON SHEET E4.	GOODSHOP MANUFACTURIES	SEE FIXTURE SPEC ON SHEET E4.	2700K	12W LED BULB
LT04	SMALL BOOTH PENDANT. TAN COLOR 2700K COLOR TEMP. SEE FIXTURE SPEC ON SHEET E5.	BESA LIGHTING	GALA GALATIN	2700K	9W LED
LT05	WARM WHITE LED STRIP. 2700K COLOR TEMP. SEE FIXTURE SPEC ON SHEET E5.	CONTRACTOR SELECT	SEE FIXTURE SPEC ON SHEET E5.	2700K	6W LED
LT06	WARM WHITE LED STRIP. 2700K COLOR TEMP. SEE FIXTURE SPEC ON SHEET E5.	CONTRACTOR SELECT	SEE FIXTURE SPEC ON SHEET E5.	2700K	6W LED
LT09	ARCHITECTURAL LED CAN LIGHT. 2700K COLOR TEMP. SEE FIXTURE SPEC ON SHEET E5.	CONTRACTOR SELECT	SEE FIXTURE SPEC ON SHEET E5.	2700K	25W LED
LT10	ARCHITECTURAL LED TRACK LIGHT LIGHT. 2700K COLOR TEMP. PROVIDE 5A CURRENT LIMITER ON 20' TRACK. PROVIDE 3A CURRENT LIMITER ON 16' TRACK.	CONTRACTOR SELECT		2700K	
C	ARCHITECTURAL LED RECESSED EYEBALL CAN LIGHT. 2700K COLOR TEMP. SEE FIXTURE SPEC ON SHEET E5.	CONTRACTOR SELECT		2700K	25W LED
EM	EMERGENCY LIGHTING UNIT	EXITRONIX	LL90	WHITE	(2) 5W
EX	LED EXIT EMERGENCY COMBO	EXITRONIX	VEXUBPWHEL-90R	WHITE	INCLUDED

NOTE:  
 • PLEASE CONTACT JUNE LEE AT GOODSHOP MANUFACTURIES. JUNE.L@GOODSHOPNYC.COM. (212)343-7024.  
 • CONTRACTOR TO SUBMIT OPTIONS FOR DESIGNER APPROVAL.  
 • NO SUBSTITUTION ALLOWED FOR SPECIFIED LIGHT FIXTURES.

ALL LIGHT FIXTURES LISTED IN THE ABOVE SCHEDULE SHALL BE FURNISHED AND INSTALLED BY THE ELECTRICAL CONTRACTOR, EXCEPT AS NOTED IN PARAGRAPH, PART 1.1.C OF ELECTRICAL SPECIFICATIONS.

FIXTURE NOTES:  
 1. SEE ARCHITECTURAL DETAILS FOR MOUNTING LOCATIONS.  
 2. ALL OUTLETS FOR LIGHTS SHALL BE SUPPORTED INDEPENDENTLY OF CEILING SYSTEM USING 1/4" ALL THREAD ROD.

Order Plans



Timothy A. Payne, PE  
212 N. McDowell St. Suite 204  
Charlotte, NC 28204  
(P) 704.334.7369 (F) 704.347.0093  
www.shultreg.com  
SEC - 18-321

THESE PLANS AND SPECIFICATIONS HAVE BEEN PREPARED BY ME OR UNDER MY SUPERVISION AND TO THE BEST OF MY KNOWLEDGE COMPLY WITH ALL LOCAL, STATE AND FEDERAL REQUIREMENTS