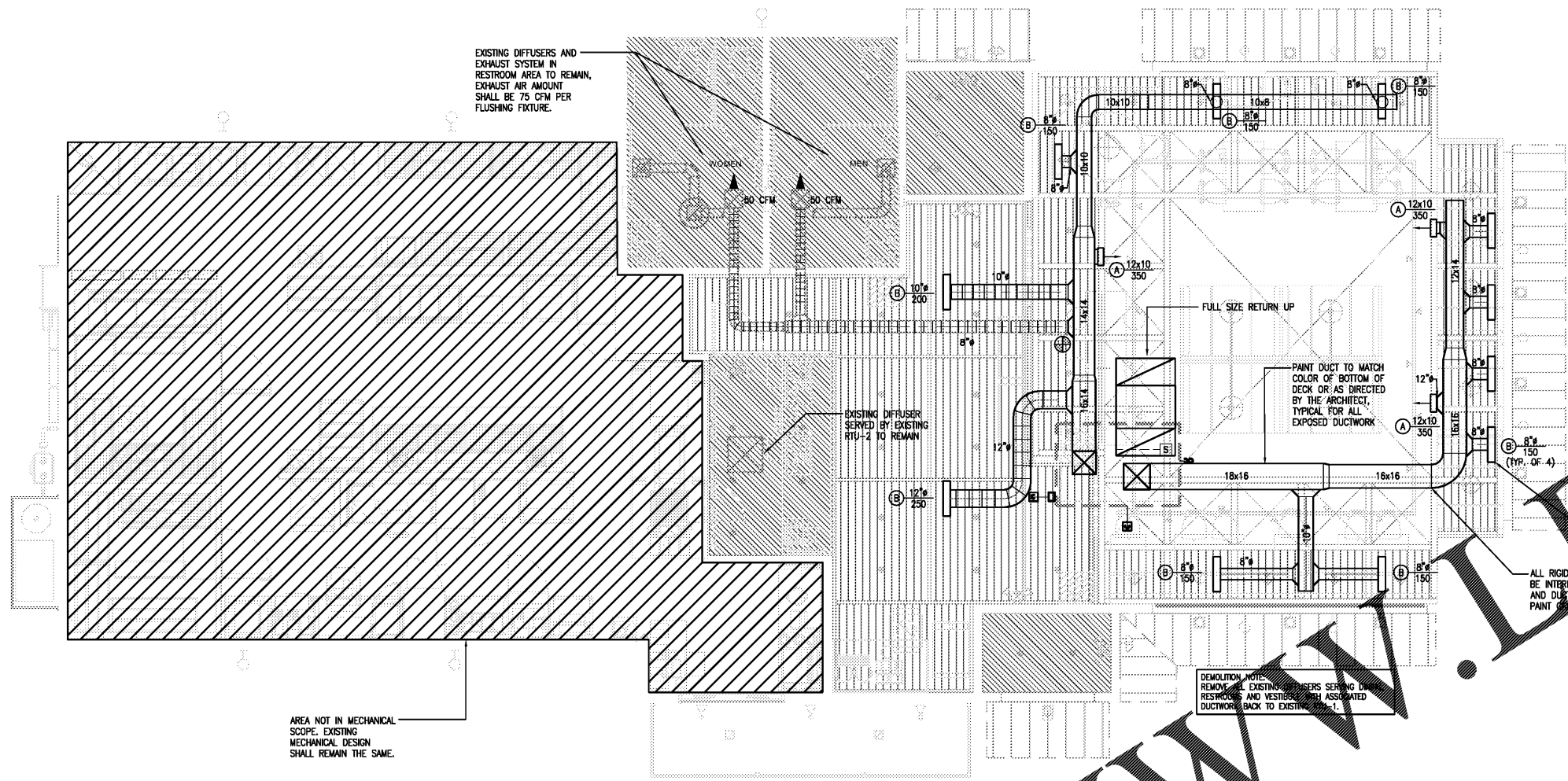




**ATTENTION GENERAL CONTRACTOR:** "RE-ENGINEERING" DEVIATIONS FROM THE SHOWN DESIGN AND REQUIRED HVAC EQUIPMENT MUST BE APPROVED IN ADVANCE BY THE ARCHITECT AND PROFESSIONAL ENGINEER. UNAUTHORIZED SUBSTITUTIONS OR ALTERATIONS WILL VOID THE SIGNATURE AND SEAL OF THE PROFESSIONAL ENGINEER AND LEAVE VIOLATORS RESPONSIBLE FOR RESUBMISSION OF SIGNED AND SEALED DRAWINGS.

**CONTRACTORS NOTES**

- SEE NCA PACKAGE SCHEDULE NOTES FURNISHED ITEMS FOR HVAC INSTALLATION. ALL NON-FURNISHED ITEMS NECESSARY TO COMPLETE THE DESIGN INTENT OF THESE DOCUMENTS SHALL BE BY THE HVAC CONTRACTOR.
- ALL FLEX DUCT SHALL BE U.L. LISTED, R-8 BENEATH THERMAL BLDG. ENVELOPE & R-8 WHEN CEILING INSULATION IS USED. FLEX SHALL BE FOIL-BACKED, CLASS 1 AIR DUCT WITH FIRE AND SMOKE RATING [25]-[50]. FLEX DUCT SHALL BEAR A RECTANGULAR OR SQUARE SYMBOL FOR UNLIMITED LENGTH OF RUN OUT OR AS PER LOCAL CODE.
- ALL METAL DUCT AND AIR DISTRIBUTION DEVICES SHALL BE INSULATED WITH R-8, 2" X .75 DENSITY FOIL-BACKED INSULATION WITH FIRE AND SMOKE RATING [25]-[50].
- ALL DUCTWORK SHALL BE INDEPENDENTLY HUNG FROM STRUCTURAL MEMBERS.
- UPON COMPLETION OF PROJECT, THE HVAC CONTRACTOR IS TO PROVIDE A CERTIFIED TEST AND TAG REPORT AND A WRITTEN REPORT TO NCA CONSULTANTS. ALL CAPACITIES MUST BE SET TO WITHIN ±10% OF AMOUNT INDICATED ON THE FLOOR PLAN AND SCHEDULES.
- UNLESS OTHERWISE NOTED, ALL SUPPLY TAKEOFFS SHALL HAVE A MANUAL VOLUME CONTROL DAMPER (SEE DAMPER SYMBOLS EXPRESSED ON PLAN).
- THE HVAC CONTRACTOR SHALL COORDINATE DIFFUSER LOCATIONS ON SITE WITH MOST RECENT REFLECTED CEILING PLAN.
- UPON COMPLETION OF PROJECT, THE HVAC CONTRACTOR IS TO PROVIDE A CERTIFIED TEST AND TAG REPORT AND A WRITTEN REPORT TO NCA CONSULTANTS. ALL CAPACITIES MUST BE SET TO WITHIN ±10% OF AMOUNT INDICATED ON THE FLOOR PLAN AND SCHEDULES.
- THE HVAC CONTRACTOR IS TO MAKE ALL LOW-VOLTAGE, FINAL CONNECTIONS FOR ALL HVAC EQUIPMENT INCLUDING TEMPERATURE CONTROLS, RIUS, AND SMOKE DETECTORS.



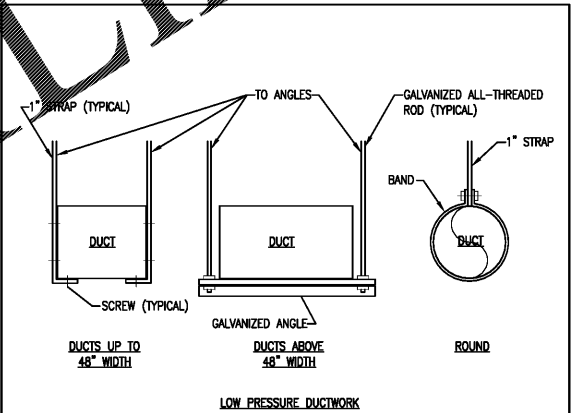
**1 MECHANICAL PLAN**  
M1 SCALE: 1/4" = 1'-0"

**TABLE 403.3 OA REQUIREMENTS**  
AREAS OF USAGE DID NOT CHANGE. THIS WORK IS A REMODEL TO PROVIDE A "FRESH NEW LOOK". OUTSIDE AIR REQUIREMENTS REMAIN THE SAME AND OUTSIDE AIR AMOUNTS SHALL REMAIN THE SAME.

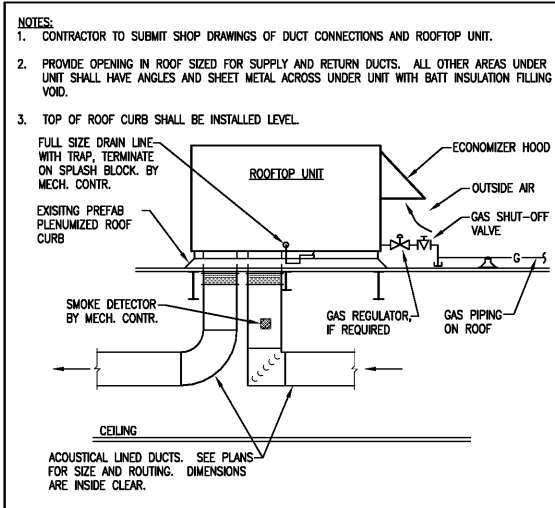
DIFFUSER SCHEDULE											
SYMBOL	CFM	NECK SIZE	MODUL. SIZE	FRAME TYPE	PATTERN	DAMPER	MATERIAL	SERVICE	FINISH	MANUFACTURER & MODEL No.	NOTES
(A)	AS NOTED	NOTED	NOTED	MATCH WALL	DBL DEFLECTION	YES	STEEL	SUPPLY	NOTE 2	TITUS 300FL	1-4

LINEAR SLOT DIFFUSER SCHEDULE												
SYMBOL	CFM	NOMINAL LENGTH	FRAME TYPE	THROW PATTERN	SLOT	DAMPER	PLENUM	MATERIAL	SERVICE	FINISH	MANUFACTURER & MODEL No.	NOTES
(B)	AS NOTED	2'	77	2-WAY	1	YOUNG REGULATOR 800AWO-T-12	FBPI-15	ALUMINUM	SUPPLY	NOTE 2	TITUS FL-15	1-4

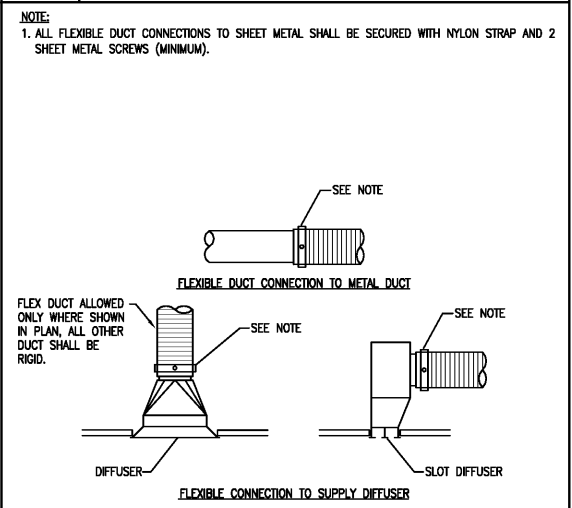
- NOTES:**
- DIFFUSER DESIGNATIONS ON PLANS AS FOLLOWS:  
DIFFUSER OR NECK SIZE:  $\frac{12 \times 12}{300}$  (A) DIFFUSER TYPE AS NOTED ABOVE  
AIR QUANTITY:  $\frac{12 \times 12}{300}$  (B)
  - COORDINATE COLOR WITH ARCHITECT/OWNER PRIOR TO ORDERING.
  - ALL EXPOSED DUCT AND DIFFUSERS TO BE PAINTED AS DIRECTED BY ARCHITECT.
  - PROVIDE PROPER MOUNT FOR CEILING TYPE.



**2 RECT. DUCT SUPPORT TRAPEZE AND STRAP HANGERS**  
M1 NO SCALE



**4 DUCT CONNECTIONS TO PLENUMIZED ROOF CURB**  
M1 NO SCALE



**3 DUCT CONNECTIONS**  
M1 NO SCALE

Order Plans @ [www.dual-line.com](mailto:www.dual-line.com)



**GEORGE W. AUSTIN, JR., P.E.**  
212 N. McDowell St., Suite 204  
Charlotte, NC 28204  
(P) 704.334.7363 (F) 704.347.0093  
www.dual-line.com  
SEC - 19-321

THESE PLANS AND SPECIFICATIONS HAVE BEEN PREPARED BY ME OR UNDER MY SUPERVISION AND TO THE BEST OF MY KNOWLEDGE COMPLY WITH ALL LOCAL, STATE AND FEDERAL REQUIREMENTS.