

THESE DRAWINGS ARE THE
PROPERTY OF
ARCHITRAVE GROUP PC
AND SHALL NOT BE USED OR
REPRODUCED WITHOUT THE
EXPRESS WRITTEN PERMISSION
OF ARCHITRAVE GROUP PC



POPEYES
1009 BARATARIA BLVD.
MARRERO, LOUISIANA
LOUISIANA KITCHEN LK-PLUS DESIGN STANDARDS
60 SEATS / DUAL-LINE PRODUCTION



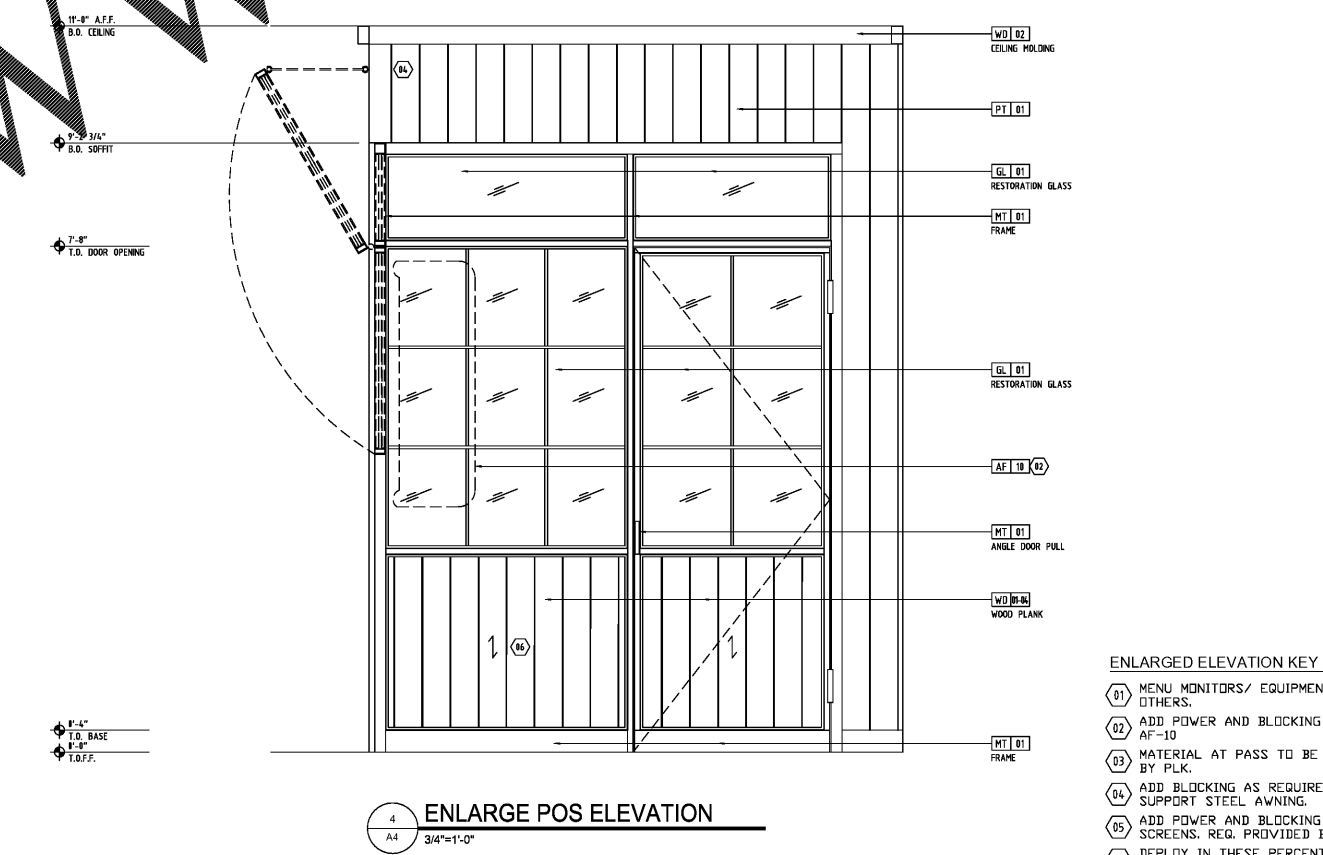
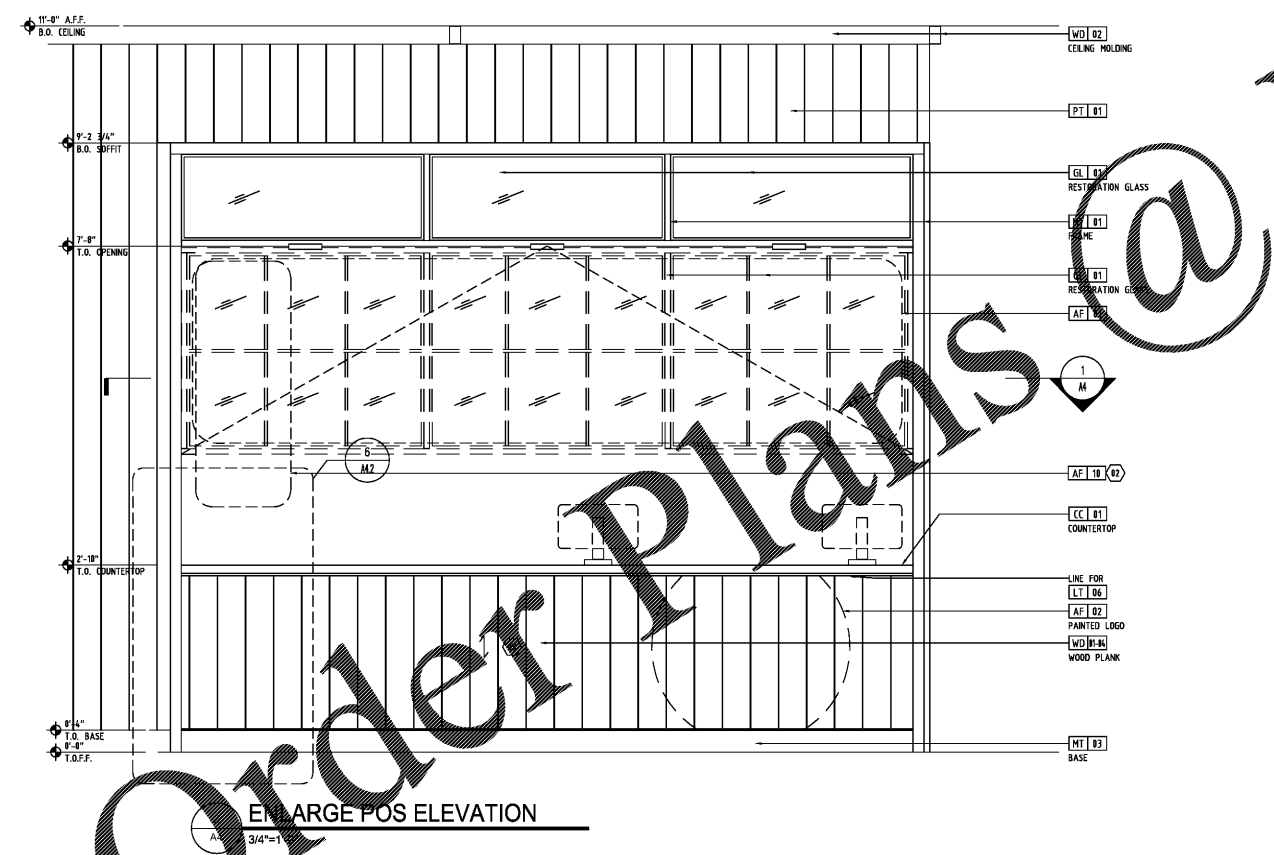
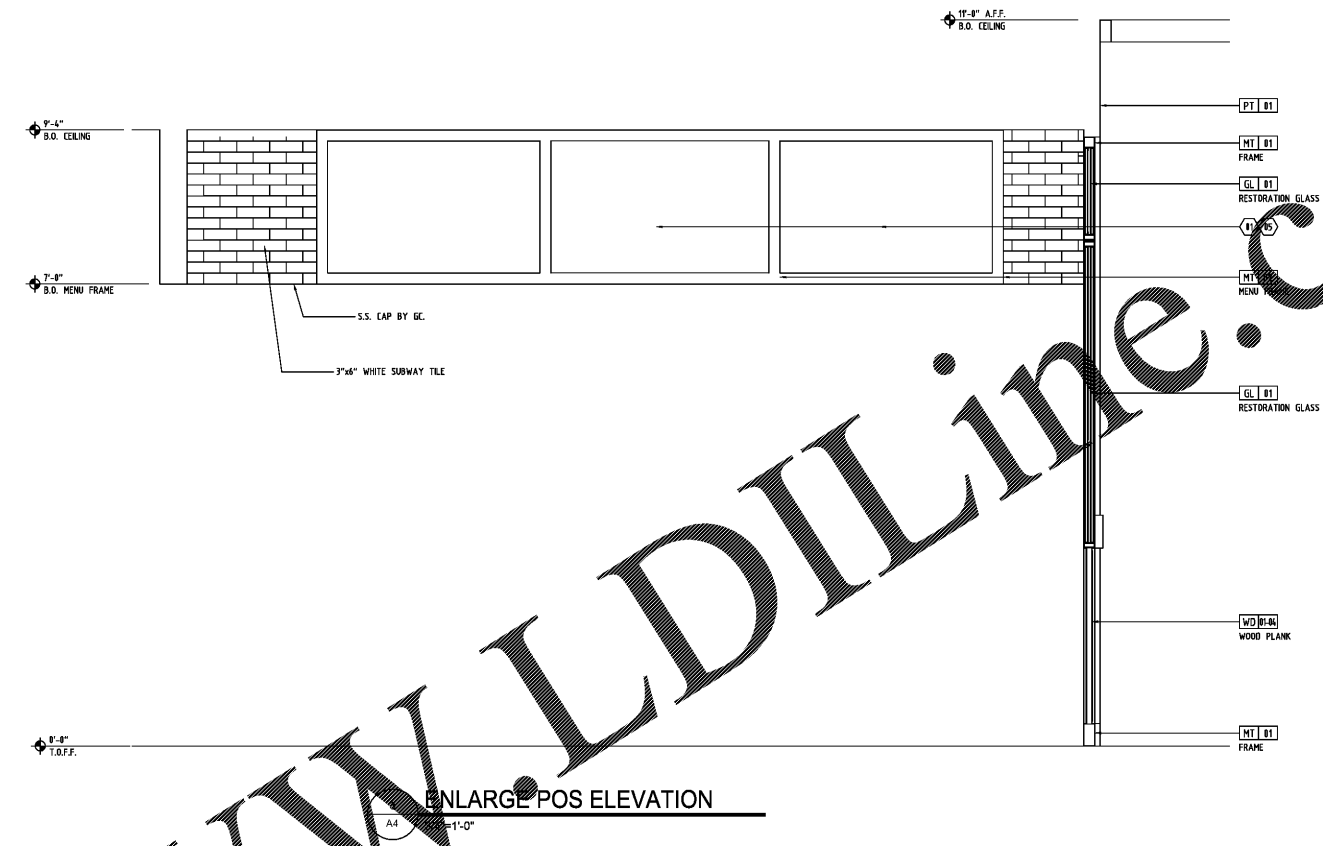
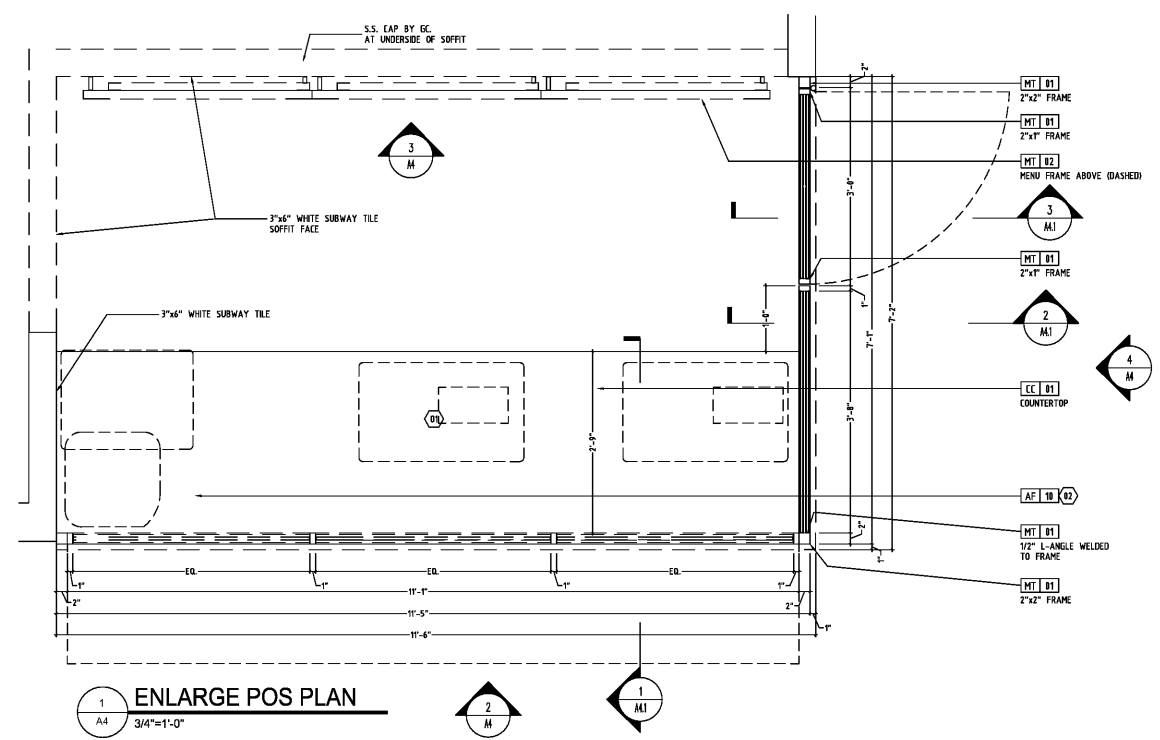
REVISIONS:

FRONT COUNTER
PLAN &
ELEVATIONS

DATE: 12/19/18

A4

CHECKED: JS



- ENLARGED ELEVATION KEY NOTES**
- 01 MENU MONITORS/ EQUIPMENT BY OTHERS.
 - 02 ADD POWER AND BLOCKING FOR AF-10
 - 03 MATERIAL AT PASS TO BE PROVIDED BY PLK.
 - 04 ADD BLOCKING AS REQUIRED TO SUPPORT STEEL AWNING.
 - 05 ADD POWER AND BLOCKING FOR MENU SCREENS. REQ. PROVIDED BY PLK.
 - 06 DEPLOY IN THESE PERCENTAGES:
WD-01: 10%
WD-02: 40%
WD-03: 40%
WD-04: 10%

Order Plans @

WWW.LDILine.com