

POWER GENERAL NOTES:

- A. THE ELECTRICAL CONTRACTOR SHALL REFER TO THE CIVIL, ARCHITECTURAL, STRUCTURAL, MECHANICAL AND PLUMBING DRAWING FOR THE EXACT BUILDINGS AND ROOMS LAYOUTS. ALL DIMENSIONS, SECTIONS, DETAILS, ELEVATIONS, VOLTAGE REQUIREMENTS AND PHYSICAL SIZE OF ALL EQUIPMENT FURNISHED BY OTHER TRADES. COORDINATE AND ADJUST ALL ELECTRICAL INSTALLATIONS ACCORDINGLY.
- B. ELECTRICAL CONTRACTOR SHALL COORDINATE FULLY WITH OTHER CONTRACTORS ASSOCIATED WITH THIS PROJECT TO VERIFY ALL EQUIPMENT LOCATIONS, CONNECTION REQUIREMENTS, ELEVATIONS AND LOCATIONS OF PIPES, CONDUITS AND DUCTS TO PREVENT CONFLICTS DURING CONSTRUCTION. ANY RELOCATION OR REROUTING OF EQUIPMENT, PIPES, CONDUITS, DUCTS OR MATERIALS RESULTING FROM A LACK OF COORDINATION BETWEEN CONTRACTORS WILL BE AT THE CONTRACTORS EXPENSE.
- C. ALL PENETRATIONS THRU FIRE RATED WALLS AND CEILING SHALL BE SEALED IN ACCORDANCE WITH THE NATIONAL ELECTRICAL CODE ARTICLE 300-21.
- D. TELEPHONE/COMPUTER OUTLET MOUNT DOUBLE GANG BOX WITH SINGLE PLASTER RING 18" ABOVE FINISHED FLOOR (UNLESS NOTED OTHERWISE, STUB-UP 3/4" CONDUIT TO ABOVE NEAREST ACCESSIBLE CEILING SPACE).
- E. INSTALL A FULL SIZE NEUTRAL FOR EACH CIRCUIT, GROUP, HOME RUN CIRCUITS PER NEC 310, TABLE 310.15 (B) (2) e
- F. ALL BRANCH CIRCUIT CONDUCTORS SHALL BE #12 AWG CU. UNLESS OTHERWISE SHOWN. BRANCH CIRCUITS HOMERUN CONDUCTORS SHALL BE #10 AWG CU. WHEN LENGTH EXCEEDS 80 FT.
- G. ALL OUTLETS AND DEVICE LOCATIONS AND MOUNTING HEIGHTS SHALL BE VERIFIED WITH THE OWNER AND ARCHITECT PRIOR TO ROUGH-IN. COORDINATE THE INSTALLATIONS WITH EQUIPMENT AND SYSTEMS SUPPLIERS AND OTHER TRADES.
- H. ELECTRICAL OUTLET BOXES LOCATED ON OPPOSITE SIDES OF FIRE RATED WALLS SHALL BE SEPARATED BY HORIZONTAL DISTANCE OF 24" MINIMUM.
- I. ELECTRICAL CONTRACTOR TO COORDINATE THE EXACT LOCATION AND ELECTRICAL REQUIREMENT FOR ALL HVAC EQUIPMENT WITH MECHANICAL CONTRACTOR AND/OR OWNER. VERIFY THE MINIMUM CIRCUIT AMPERE RATING AND MAXIMUM OVER CURRENT PROTECTION DEVICE RATING OF THE ACTUAL UNIT BEING INSTALLED AND ADJUST THE FEEDER CIRCUIT ACCORDINGLY.
- J. ELECTRICAL CONTRACTOR TO COORDINATE WITH ALL THE EQUIPMENT MANUFACTURER POWER REQUIREMENTS PRIOR TO INSTALL.

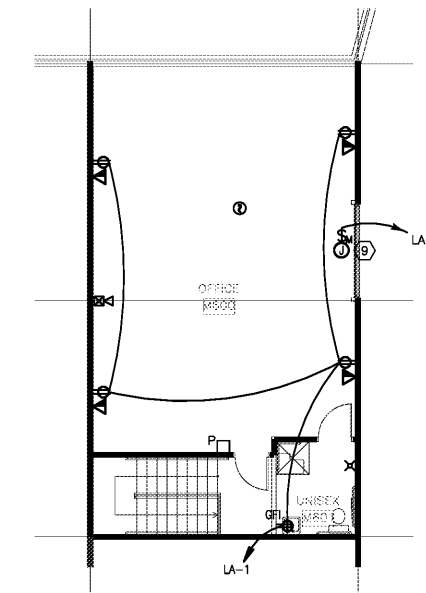
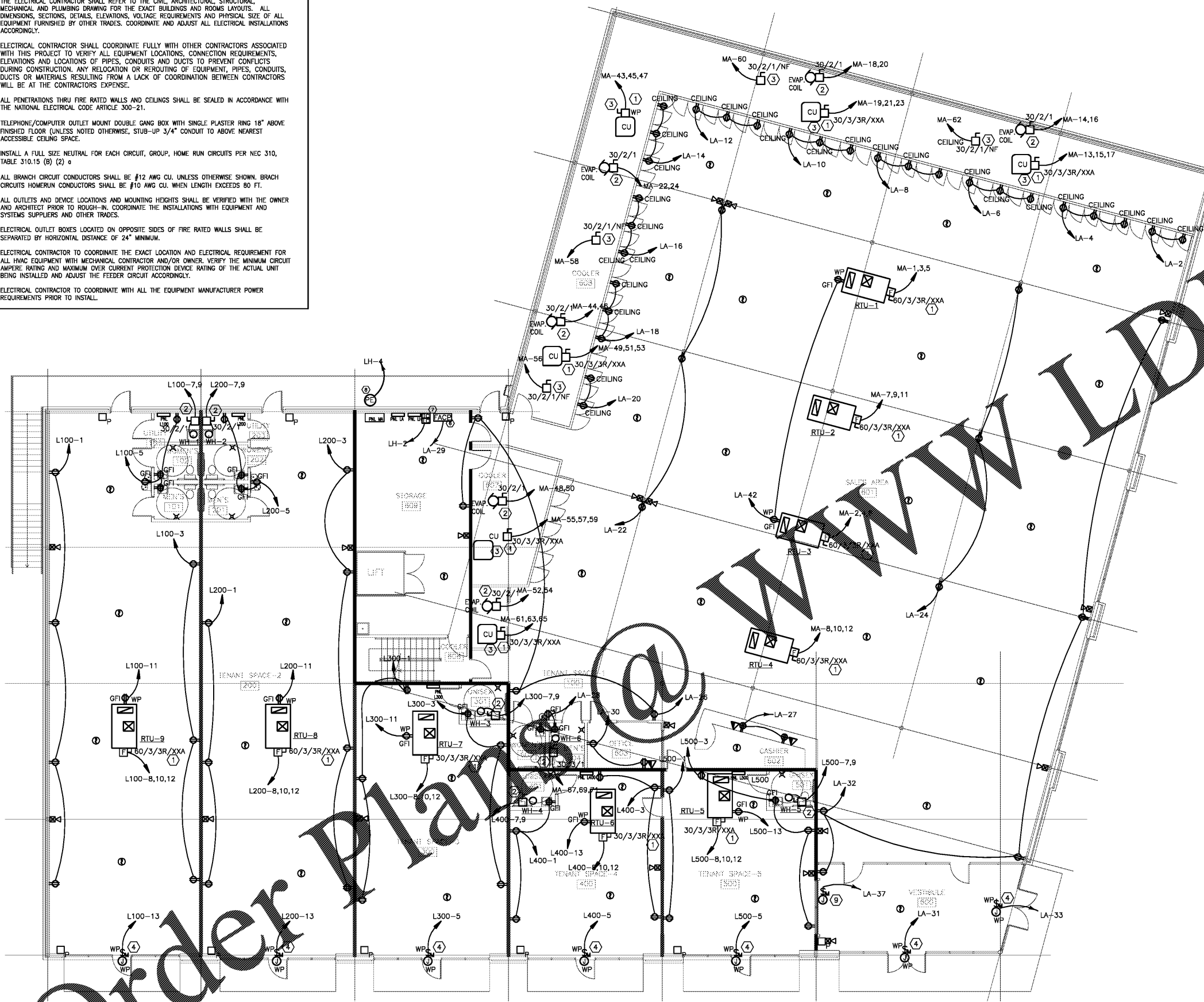
POWER KEY NOTES:

- ① SUPPLY AND INSTALL FUSIBLE DISCONNECT SWITCH. REFER TO MECHANICAL EQUIPMENT MANUFACTURER SHOP DRAWING FOR EXACT DISCONNECT SIZE, VOLTAGE, PHASE AND TYPE. ADJUST DISCONNECT SIZE AND TYPE ACCORDINGLY. DISCONNECT SHALL BE FUSED AS PER MANUFACTURER REQUIREMENTS.
 - ② SUPPLY AND INSTALL NON-FUSE DISCONNECT SWITCH. REFER TO MECHANICAL EQUIPMENT MANUFACTURER SHOP DRAWING FOR EXACT DISCONNECT SIZE, VOLTAGE, PHASE AND TYPE. ADJUST DISCONNECT SIZE AND TYPE ACCORDINGLY.
 - ③ WALK-IN COOLER COMPRESSOR. FIELD COORDINATE EXACT LOCATION OF COMPRESSOR IN THE FIELD PRIOR TO ROUGH-IN. COORDINATE WITH EQUIPMENT MANUFACTURER SHOP DRAWINGS FOR EXACT DISCONNECT SIZE, VOLTAGE, PHASE AND TYPE. ADJUST DISCONNECT SIZE AND TYPE ACCORDINGLY. FUSE PER NAME PLATE.
 - ④ TENANT SIGN. COORDINATE AND VERIFY EXACT LOCATION IN THE FIELD WITH THE SIGN CONTRACTOR PRIOR TO ROUGH-IN. ROUTE CIRCUIT VIA TIME CLOCK. FURNISH AND INSTALL TIME CLOCK.
 - ⑤ UTILITY METER FOR NEW SERVICE. COORDINATE WITH UTILITY COMPANY FOR EXACT REQUIREMENTS.
 - ⑥ FIRE ALARM CONTROL PANEL. FIELD COORDINATE EXACT LOCATION.
 - ⑦ CONTRACTOR TO PROVIDE TO THE LIGHTING CONTRACTOR AND A TIME CLOCK.
 - ⑧ MOUNT PHOTO LIGHT ON PARAPET FACING NORTH. TIME CLOCK LOCATION AND TYPE. OUTSIDE LIGHTING CONTROL DETAIL ON SHEET E100.
- POWER CONNECTION FOR FIRE SHUTTER. FIRE SHUTTER SHALL BE POWER OPEN. CONNECT SHUTTER TO FIRE ALARM PANEL. WHEN FIRE ALARM ACTIVATE, FIRE SHUTTER TO BE CLOSED AUTOMATICALLY.

FIRE ALARM NOTES:

- A. FIRE ALARM CONTRACTOR TO COORDINATE EXACT NUMBER AND LOCATIONS OF DUCT SMOKE DETECTORS.
- B. FIRE ALARM SIGNALING LINE CIRCUITS SHALL COMPLY WITH NFPA 72, CLASS B, STYLE 4. NOTIFICATION-APPLIANCE CIRCUITS SHALL COMPLY WITH NFPA 72, CLASS A, STYLE Z.
- C. WIRE AND CABLE FOR FIRE ALARM SYSTEM SHALL BE UL LISTED AND LABELED AS COMPLYING WITH NFPA 70, ARTICLE 760. SIGNALING LINE CIRCUITS SHALL BE COMPRISED OF CIRCUIT INTEGRITY CABLE, TWISTED SHIELDED PAIR, NFPA 70 ARTICLE 760, CLASSIFICATION C1, FOR POWER-LIMITED FIRE ALARM SIGNAL SERVICE, UL LISTED AS TYPE FPL, AND COMPLYING WITH REQUIREMENTS IN UL 1424 AND IN UL 2196 FOR A 2-HOUR RATING.
- D. FIRE ALARM CONTROL PANEL SHALL BE INTERLOCKED WITH SPRINKLE SYSTEM.
- E. REFERENCE MECHANICAL DRAWINGS FOR EXACT LOCATIONS OF DAMPERS & DUCT DETECTORS. PROVIDE LOW VOLTAGE WIRING AS REQUIRED.
- F. REFER TO DRAWING E.1.1 FOR FIRE ALARM LEGEND AND RISER DIAGRAM.

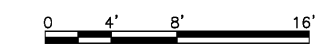
REVISION NO.	DATE	DESCRIPTION



Order Plans

① ELECTRICAL GROUND FLOOR PLAN - POWER
E4.2 SCALE: 1/8" = 1'-0"

② ELECTRICAL FLOOR PLAN - MEZZANINE POWER
E4.2 SCALE: 1/8" = 1'-0"



RETAIL DEVELOPMENT
POP'S WINE & SPIRITS
 2-1 764 TR A-B MCFARLAND 400 IND PARK
 MCFARLAND PKWY ALPHARETTA GA 30004

ELECTRICAL GROUND & MEZZANINE
 FLOOR PLAN - POWER
 PROJ. NO: 201834
 DATE:

E4.2