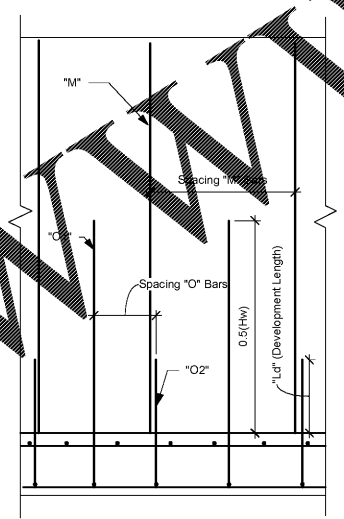
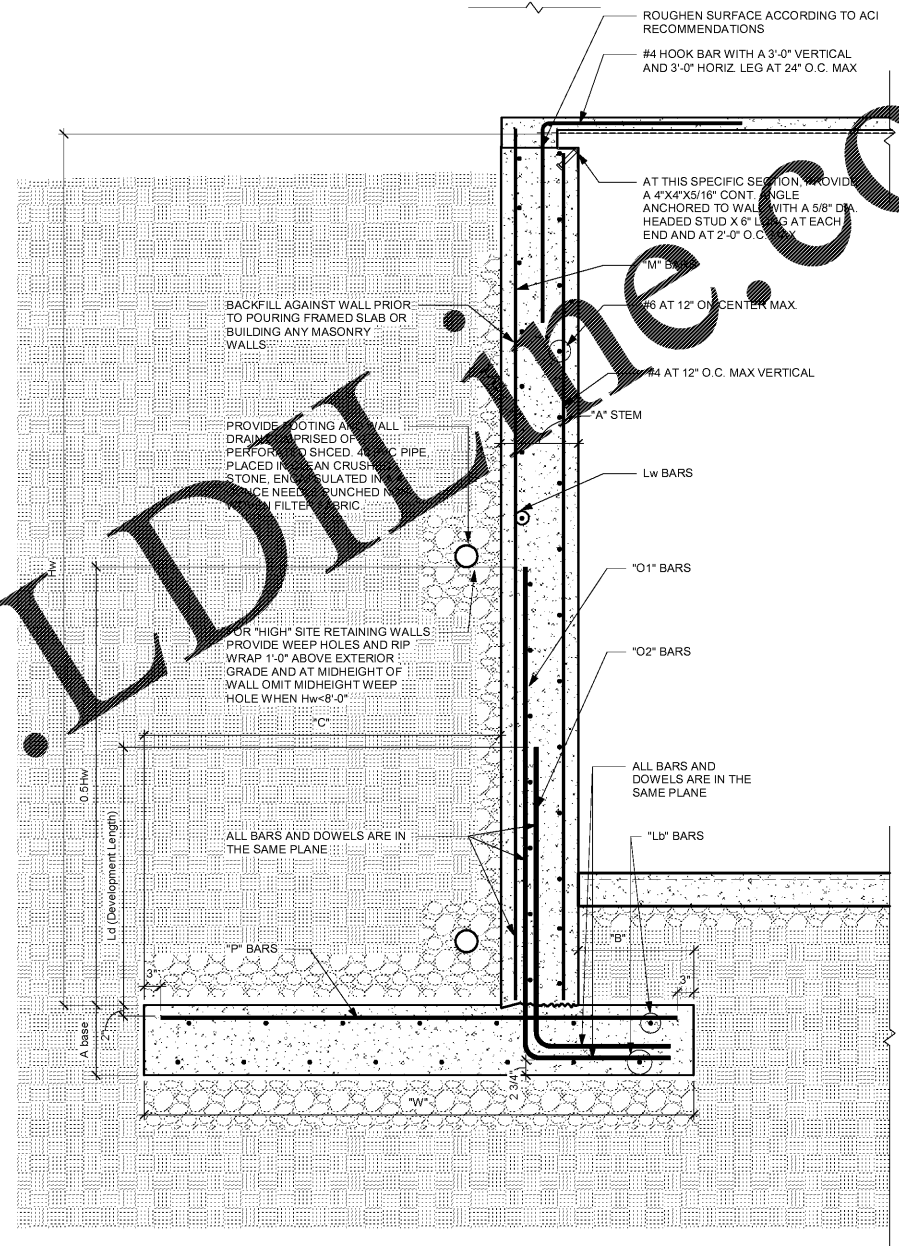


3 Retaining Wall - Section (Low Walls)
S4.0 3/4" = 1'-0"



2 Typical Detail, Retaining Wall, Elevation Tall Walls
S4.0 1" = 1'-0"



1 Foundation Section - Tall Retaining Wall
S4.0 3/4" = 1'-0"

CANTILEVERED RETAINING WALLS FOR WALLS LESS THAN OR EQUAL TO 10'-0"

SOIL PROPERTIES: GAMMA = 115 PCF, BACKFILL SLOPE = LEVEL, fc = 3000 psi, fy = 60000 psi

CONCRETE DIMENSIONS				STEM REINFORCEMENT					BASE REINFORCEMENT			
HEIGHT ABOVE BASE (Hw) ft.	STEM THICKNESS (A stem) inches	HEEL (C) ft.	WIDTH OF BASE (W) ft.	KEY (t x k) inches x inches	"O" BARS (Size at inches)	Dowels Into Stem (ft-inches)	"M" BARS (Size at inches)	"Lw" BARS (Size at inches)	"P" BARS (Size at inches)	"Lb" BARS (Size)	"K" BARS (Size at inches)	
2'-0" < Hw < 4'-0"	8"	1'-1"	3'	12"	NONE	Hook #4 at 9"	NONE	NONE	#4 at 12"	#4 at 9"Hk	5 #4	NONE
4'-1" < Hw < 6'-0"	10"	1'-6"	4'-3"	12"	NONE	Hook #4 at 9"	NONE	NONE	#4 at 12"	#4 at 9"	6 #4	NONE
6'-1" < Hw < 8'-0"	12"	2'-0"	6'-4"	12"	NONE	#4 at 9"	NONE	NONE	#4 at 12"	#4 at 9"	8 #4	NONE
8'-1" < Hw < 10'-0"	14"	2'-6"	7'-4"	12"	NONE	#6 at 12"	NONE	NONE	#4 at 12"	#5 at 12"	10 #4	NONE

CANTILEVERED RETAINING WALLS FOR WALLS GREATER THAN 10'-0"

SOIL PROPERTIES: GAMMA = 115 PCF, BACKFILL SLOPE = LEVEL, fc = 3000 psi, fy = 60000 psi

CONCRETE DIMENSIONS				STEM REINFORCEMENT					BASE REINFORCEMENT			
HEIGHT ABOVE BASE (Hw) ft.	STEM THICKNESS (A stem) inches	HEEL (C) ft.	WIDTH OF BASE (W) ft.	BASE DEPTH (A base) inches	KEY (t x k) inches x inches	"O" BARS (Size at inches)	Dowels Into Stem (ft-inches)	"M" BARS (Size at inches)	"Lw" BARS (Size at inches)	"P" BARS (Size at inches)	"Lb" BARS (Size)	"K" BARS (Size at inches)
11'-0"	12"	4'-7"	7'-7"	12"	NONE	#6 at 9"	1'-10"	#5 at 18"	#5 at 12"	#5 at 9"	10 #4	NONE
12'-0"	12"	5'-1"	8'-4"	12"	NONE	#6 at 9"	2'-2"	#6 at 18"	#5 at 12"	#5 at 9"	7 #5	NONE
13'-0"	12"	5'-7"	9'-2"	12"	NONE	#5 at 6"	1'-10"	#5 at 12"	#5 at 12"	#5 at 6"	12 #4	NONE
14'-0"	12"	6'-1"	9'-11"	12"	NONE	#7 at 9"	2'-5"	#6 at 18"	#5 at 12"	#7 at 9"	13 #4	NONE
15'-0"	14"	6'-4"	10'-6"	14"	NONE	#7 at 9"	3'-2"	#7 at 18"	#6 at 12"	#7 at 9"	16 #4	NONE

REVISIONS NO.	DATE	COMMENTS
1	01.15.19	Permit Set

RETAIL DEVELOPMENT
POP'S WINE & SPIRITS
 2-1764 TR A-B MCFARLAND 400 IND PARK
 MCFARLAND PKWY ALPHARETTA GA 30004

Retaining Wall

PROJ. NO.: 201812
 DATE: 01-15-19
 © 2019 ARCHPLAN DESIGN GROUP INC

S4.0