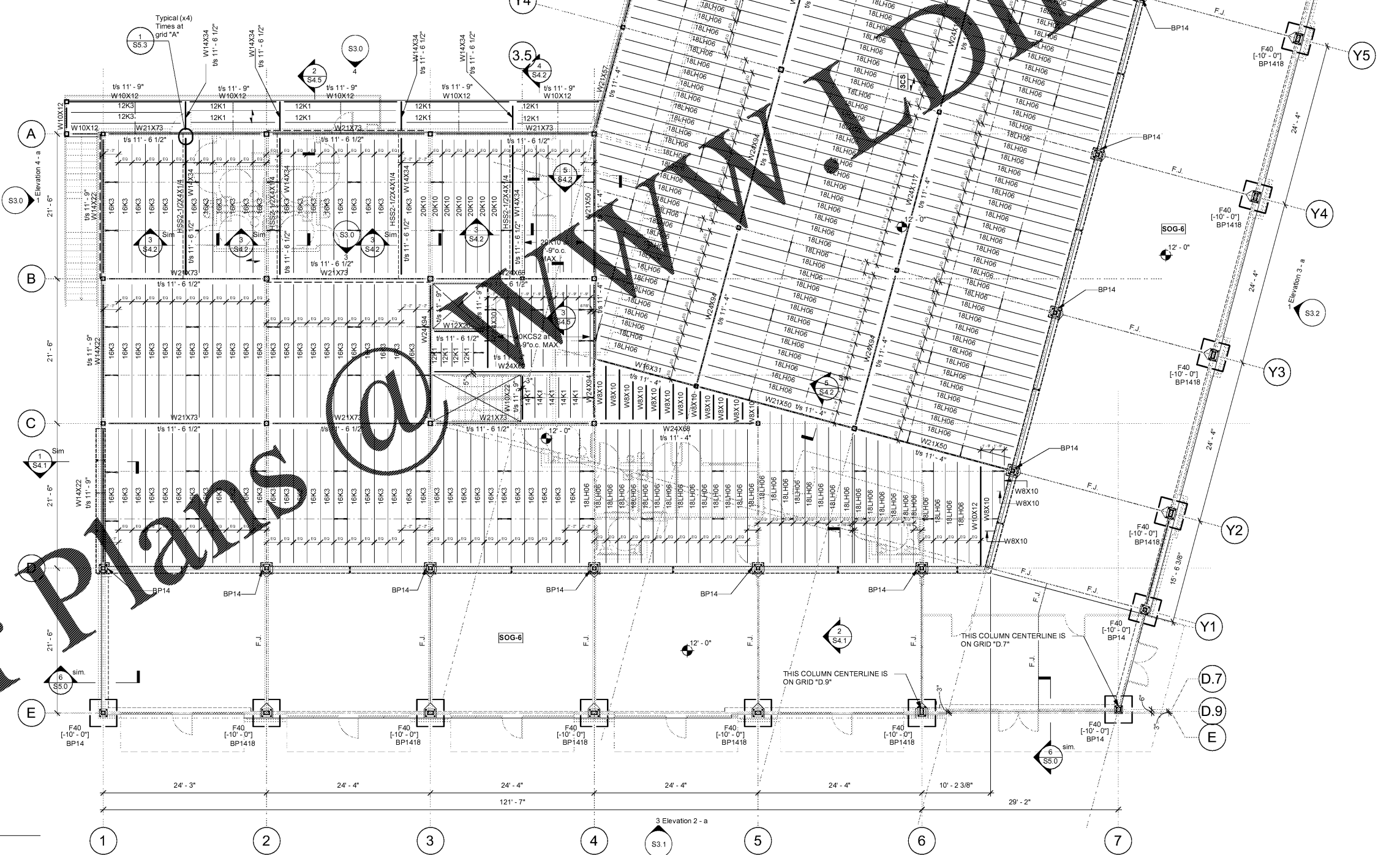


BAR JOIST FLOOR FRAMING PLAN NOTES

- H.B. : INDICATES ANGLE 3x3x1/4" HORIZONTAL BRACE EXTENDED FROM TOP OF JOIST OR BEAM TO FACE OF COLUMN. WELD ALL AROUND EACH END WITH A 3/16" FILLET WELD.
 - U.N.O. : INDICATES UNLESS NOTED OTHERWISE
 - E.O.S. : INDICATES EDGE OF SLAB
 - F.O.S. : INDICATES FACE OF STUD
 - F.F.O.B. : INDICATES EXTERIOR FACE OF BRICK
 - S.P. : INDICATES A SPLICE POINT, SEE DETAIL
 - D.B. : INDICATES DIAGONAL BRACE(S), SEE BRACE ELEVATION(S) FOR SIZE(S)
 - A.X. : INDICATES ADDITIONAL "X" TYPICAL BRIDGING USE 2-1/2x2-1/2x1/4" ANGLE
 - : INDICATES DIAGONAL TYPE BRIDGING WELDED TO JOIST FRAMING AND CROSSOVER POINTS. SEE SPECIFICATIONS.
- NOTE: KEEP STRUCTURE GUYED AND BRACED UNTIL ALL MASONRY/CONCRETE SHEARS WALLS, DIAGONAL BRACES, MOMENT FRAMES, FRAMED FLOORS AND ROOF DECKS ARE IN PLACE.
 - NOTE: AT ALL OPENINGS, PROVIDE A BENT PLATE 1/4" THICK 3" HIGH EXTENDED FROM CENTERLINE OF BEAM TO EDGE OF SLAB. WHERE BENT PLATE BEARS ON BEAM, SHOP WELD ON BOTH SIDES WITH A 3/16" FILLET WELD 3" LONG @ 12" o.c. COPE VERTICAL LEG OF BENT PLATE FOR CHANNEL STRINGER TO FRAME TO FLOOR BEAM AT STAIRS.
 - NOTE: FOR FRAMING AROUND FLOOR OPENINGS, SEE "TYPICAL DETAIL OF FRAMING AROUND A FLOOR OPENING". COORDINATE WITH ARCHITECT AND MECHANICAL/PLUMBING ENGINEER FOR EXACT DIMENSION AND LOCATION.
 - NOTE: WHERE REACTIONS ARE NOT SHOWN ON PLAN, REACTIONS SHALL BE DESIGNED FOR THE MAXIMUM ALLOWANCE LOAD AS PER ASD NINTH EDITION.
- NOTE: UNLESS NOTED OTHERWISE, ALL BEAMS RECEIVING JOISTS SHALL BE AT [-0'-5 1/2"] BELOW FINISH FLOOR
 - NOTE: UNLESS NOTED OTHERWISE, ALL BEAMS PARALLEL TO JOISTS SHALL BE AT [-3"] BELOW FINISH FLOOR SLAB
 - NOTE: FLOOR IS 3" CONCRETE SLAB 3500 PSI STRENGTH, ON 24 GAUGE CORRUGATED STEEL FLOOR DECK REINFORCED WITH WELDED WIRE FABRIC 6x6xW2.9



1/21/2019 9:25:53 AM

Order Plans

1 Ground Floor Plan
1/8" = 1'-0"

REVISIONS	NO.	DATE	COMMENTS
	01	15-19	Permit Set

RETAIL DEVELOPMENT
POP'S WINE & SPIRITS
 2-1764 TR A-B MCFARLAND 400 IND PARK
 MCFARLAND PKWY ALPHARETTA GA 30004

Ground Floor Framing Plan
 PROJ. NO. 201812
 DATE 01-15-19
 © 2018 ARCHPLAN DESIGN GROUP INC

S2.1